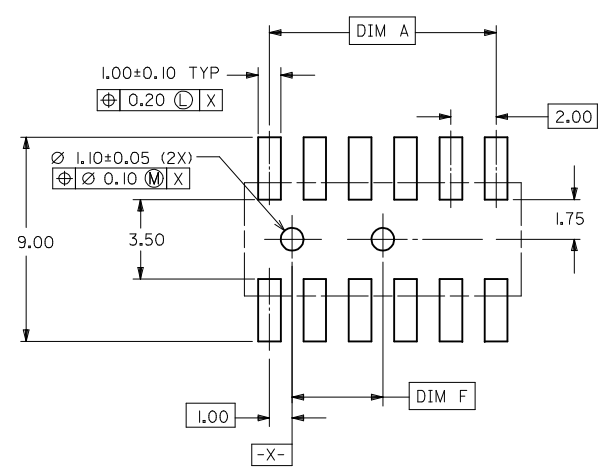
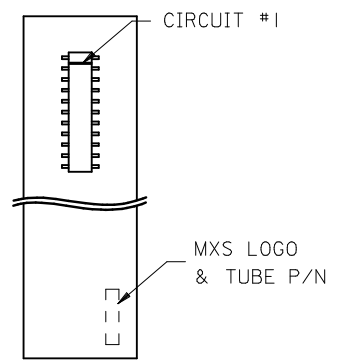
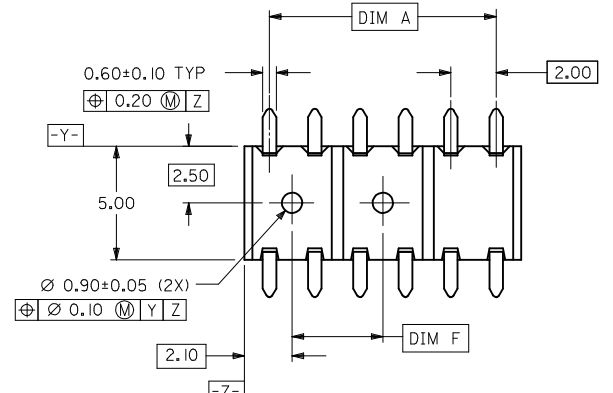
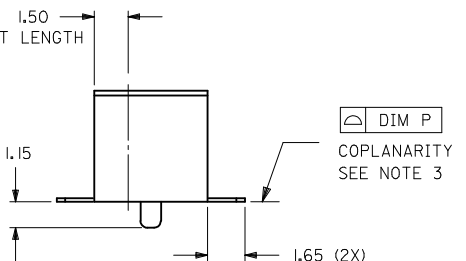
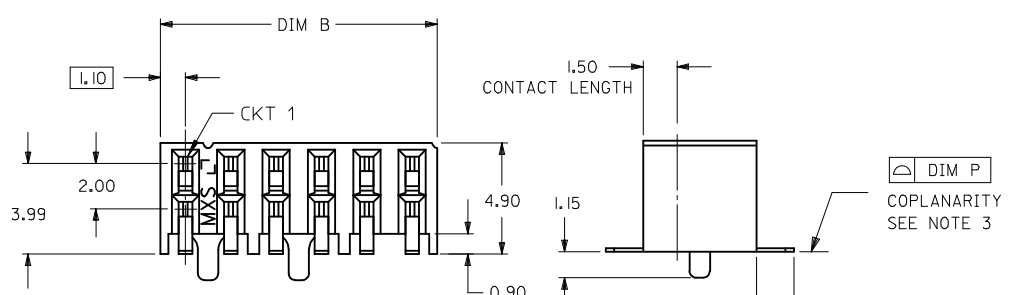


PART NO. TAPE/REEL	CKT	"A"	"B"	"F"	"P"	PLATE OPTION	PART NO. TUBE	T&R QTY PER REEL
87368-6123	08	6.00	8.20	4.00	0.10	C	87368-0824	750
87368-6122	10	8.00	10.20	4.00	0.10	D	87368-1025	750
87368-6100	12	10.00	12.20	4.00	0.13	C	87368-1224	750
87368-6101						D	87368-1225	
87368-6124	16	14.00	16.20	8.00	0.13	D	87368-1625	750
87368-6102	18	16.00	18.20	10.00	0.13	C	87368-1824	750
87368-6103						D	87368-1825	
87368-6111	22	20.00	22.20	14.00	0.13	C	87368-2224	750
87368-6112						D	87368-2225	
87368-6104	24	22.00	24.20	16.00	0.15	C	87368-2424	750
87368-6105						D	87368-2425	
87368-6134	44	42.00	44.20	36.00	0.15	C	87368-4424	650
87368-6135						D	87368-4425	
87368-6140	50	48.00	50.20	42.00	0.15	C	87368-5024	650
87368-6141						D	87368-5025	



RECOMMENDED P.C. BOARD LAYOUT

- NOTE:**
- I2 CIRCUIT SIZE SHOWN FOR ILLUSTRATION ONLY. SEE CHART FOR AVAILABLE PART SIZES.
 - PLATING FINISH:
 - C - 0.38um/15uin MIN. GOLD IN CONTACT AREA
2.54um/100uin MIN. TIN IN SOLDER TAIL AREA
BOTH OVER 1.27um/50uin MIN. NICKEL OVERALL
 - D - 0.76um/30uin MIN. GOLD IN CONTACT AREA
2.54um/100uin MIN. TIN IN SOLDER TAIL AREA
BOTH OVER 1.27um/50uin MIN. NICKEL OVERALL

- COPLANARITY OF SOLDER TAIL IS TO BE MEASURED BY RESTING THE PART ON A FLAT GAUGE SURFACE.
- RECOMMENDED PC BOARD THICKNESS IS 1.60 ± 0.10mm.
- PRODUCT SPECIFICATION PS-87264 APPLIES.
- PART MATEABLE TO ALL MILLI-GRID HEADERS WITH MATING PIN LENGTH BETWEEN 2.50mm AND 4.20mm
- PARTS SHALL BE PACKED IN MOISTURE BARRIER BAG.

PARTS IN TUBE (NTS)

ADD 16CKT OPTION EC NO: S2013-0464 DRWN:SKANG 2013/01/21 CHYK:ATSEE 2013/02/01 APPR:MLONG 2013/02/01	QUALITY SYMBOLS	GENERAL TOLERANCES (UNLESS SPECIFIED)	DIMENSION STYLE	SCALE	DESIGN UNITS	THIRD ANGLE PROJECTION
	▼=0 ◻=0	mm INCH 4 PLACES ± --- ± --- 3 PLACES ± --- ± --- 2 PLACES ± 0.20 ± --- 1 PLACE ± --- ± --- ANGULAR ± 3°	MM ONLY	NTS	METRIC	
	DESCRIPTION	DRAFT WHERE APPLICABLE MUST REMAIN WITHIN DIMENSIONS	DRAWN BY DATE	TITLE		
	REV		CHECKED BY DATE	MGRID 2MM DUAL ROW HEADER SIDE ENTRY RECEPT., SMT		
			APPROVED BY DATE	MOLEX INCORPORATED		
			MATERIAL NO.	DOCUMENT NO.	SD-87368-6000	
			SIZE	SHEET NO.		
			A3	1 OF 2		
			THIS DRAWING CONTAINS INFORMATION THAT IS PROPRIETARY TO MOLEX INCORPORATED AND SHOULD NOT BE USED WITHOUT WRITTEN PERMISSION			

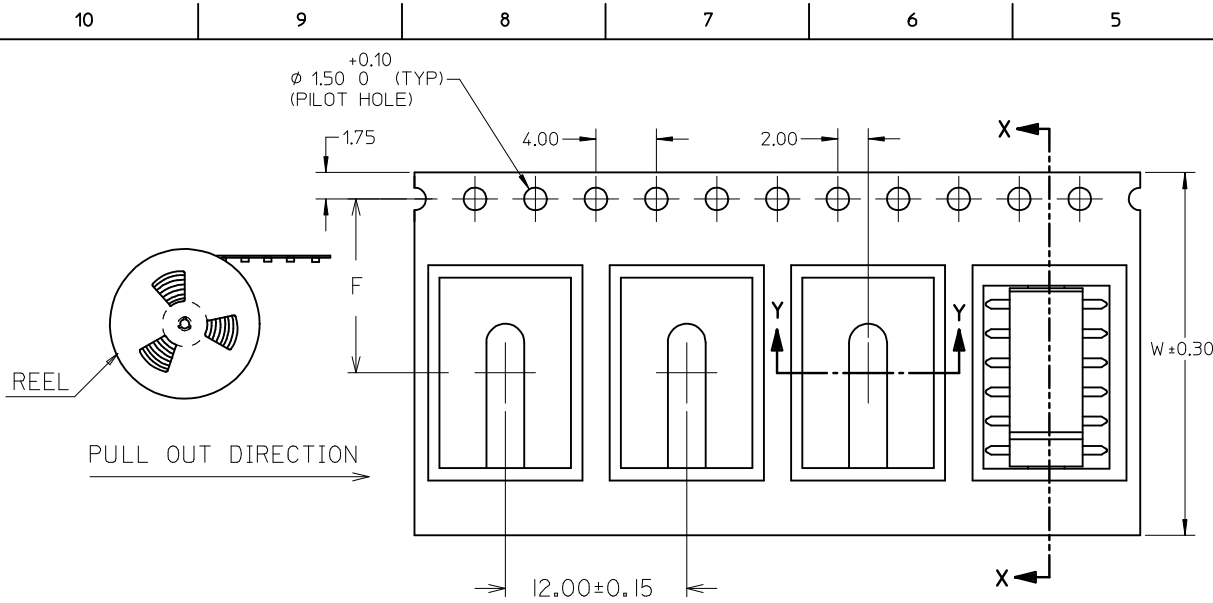
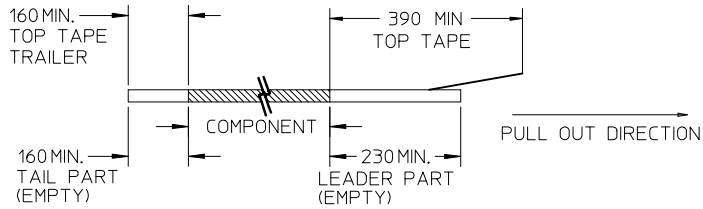


FIG 1 (FOR So DIM ILLUSTRATION)

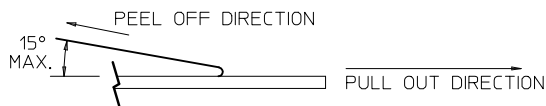
CKT SIZE	PART NO. TAPE/REEL	W	F	So	Bo	B ₁
08	87368-6123	24	11.50	NA	8.60	-
10	87368-6122	24	11.50	NA	10.60	7.00
12	87368-6100	24	11.50	NA	12.60	9.00
	87368-6101	24	11.50	NA	12.60	9.00
16	87368-6124	24	11.50	NA	16.60	13.00
18	87368-6102	32	14.20	28.40	18.60	15.00
	87368-6103	32	14.20	28.40	18.60	15.00
22	87368-6111	32	14.20	28.40	22.60	19.00
	87368-6112	32	14.20	28.40	22.60	19.00
24	87368-6104	44	20.20	40.40	24.60	21.00
	87368-6105	44	20.20	40.40	24.60	21.00
44	87368-6134	56	26.20	52.40	44.60	41.00
	87368-6135	56	26.20	52.40	44.60	41.00
50	87368-6140	72	34.20	68.40	50.60	47.00
	87368-6141	72	34.20	68.40	50.60	47.00

NOTES:

1. LEADER AND TRAILER TAPE

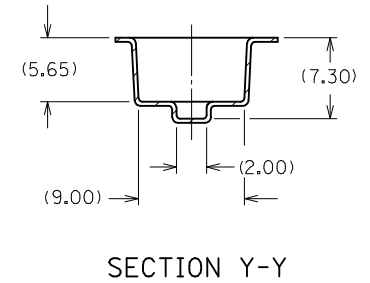
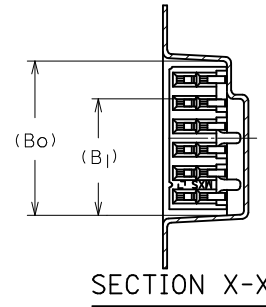
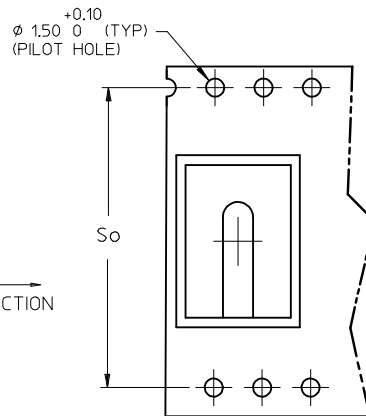


2. PEELING OFF FORCE OF THE TOP TAPE: 20-80gf. (PEELING DIRECTION AS SHOWN IN FOLLOWING FIGURE)



3. PACKAGING STANDARD IS AS PER EIA-481.

4. TAPE & REEL QUANTITY = SEE TABLE



ADD 16CKT OPTION EC NO: S2013-0464 DRWN:SKANG CHKD:ATSEE APPR:MLONG	REV D7	DESCRIPTION	QUALITY SYMBOLS ▽=0 ◻=0	GENERAL TOLERANCES (UNLESS SPECIFIED)		DIMENSION STYLE MM ONLY		SCALE NTS	DESIGN UNITS METRIC	THIRD ANGLE PROJECTION	
				mm	INCH	DRAWN BY SACM	DATE 1996/01/18	TITLE	MGRID 2MM DUAL ROW HEADER SIDE ENTRY RECEPT., SMT		
				4 PLACES	± ---	± ---	CHECKED BY SQUEK	DATE 1996/04/15	MOLEX INCORPORATED		
				3 PLACES	± ---	± ---	APPROVED BY RWONG	DATE 1996/04/15			
				2 PLACES	± 0.20	± ---	MATERIAL NO. SEE TABLE		DOCUMENT NO. SD-87368-6000	SHEET NO. 2 OF 2	
				1 PLACE	± ---	± ---	THIS DRAWING CONTAINS INFORMATION THAT IS PROPRIETARY TO MOLEX INCORPORATED AND SHOULD NOT BE USED WITHOUT WRITTEN PERMISSION				