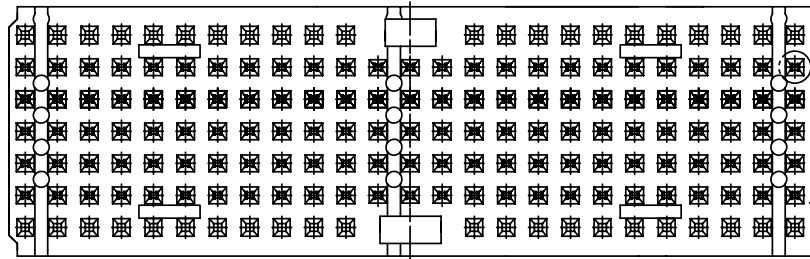


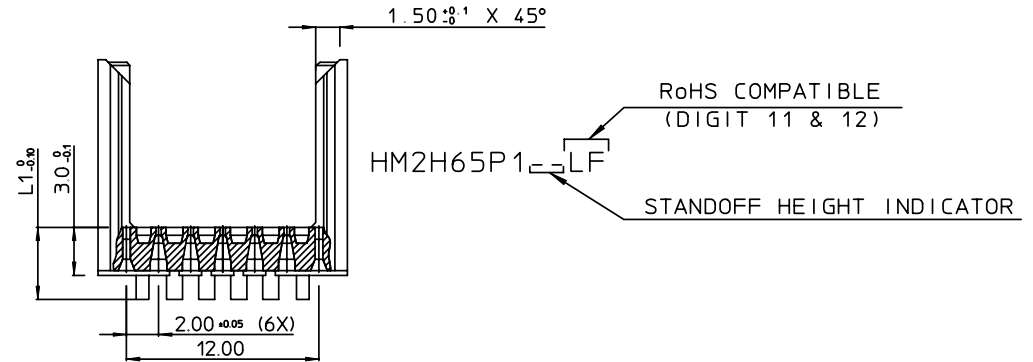
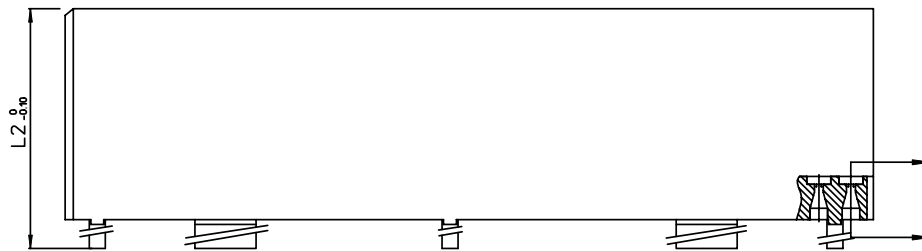
GEN. ST.	01	02	03	04	05	06	07	08	0D	50	60	70	80	90																	
INT. ST.	10	11	12	13	14	18	20	31	32	33	34	38	39	40	42	43	44	45	46	48	56	70	72	73	75	76	81	82	83	84	88

REV.	DATE	DESCRIPTION	BY	C'K'D'
E	2009-06-03	109-0094	GEORGE	ALEX
C	2005-11-22	105-0241	ALEX B	BKP
D	2006-07-04	106-0096	VIVEK	BKP

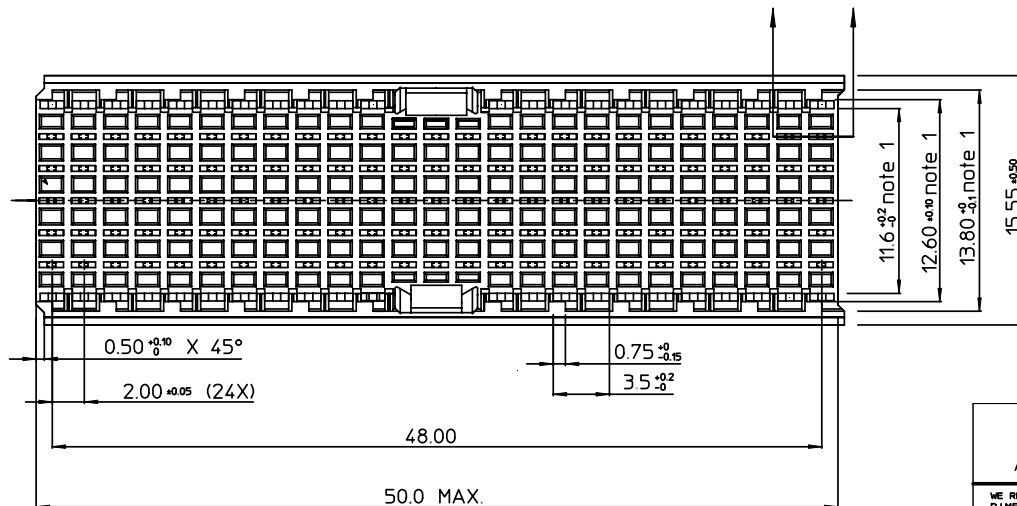
- NOTES: 1. MEASURED AT THE BOTTOM  
 2. MATERIAL: LCP 30% GLASSFILLED  
 3. THE 'LF' PRODUCT MEETS EUROPEAN UNION DIRECTIVES AND OTHER COUNTRY REGULATIONS AS DESCRIBED IN GS-22-008.  
 4. PARTS WITH AND WITHOUT SUFFIX LF TO THE PRODUCT PART NUMBER ARE IDENTICAL IN FORM, FIT AND FUNCTION. LF SUFFIX IS ADDED TO THE PART NUMBER OF THIS PRODUCT TO HAVE UNIFORM IDENTIFICATION OF ALL RoHS COMPATIBLE PRODUCTS.



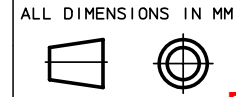
ABRIDGED CAT No MARKED



PART NUMBER	L1	L2	
HM2H65P1LF	3.0	13.45	AVAILABLE
HM2H65P109LF	3.9	14.35	AVAILABLE
HM2H65P111LF	4.1	14.55	AVAILABLE
HM2H65P113LF	4.3	14.75	AVAILABLE
HM2H65P115LF	4.5	14.95	AVAILABLE
HM2H65P117LF	4.7	15.15	AVAILABLE
HM2H65P119LF	4.9	15.35	AVAILABLE
HM2H65P122LF	5.2	15.65	AVAILABLE
HM2H65P130LF	6.0	16.45	AVAILABLE



1DEC ±0.2 2DEC ±0.1 ANGLES ±1°	<b>APPR.</b>	<b>DATE</b>	<b>SIGN.</b>	MPACS 5R STR SHR TYPE AB 25 POS
	DRAFT	1996-06-11	N. O'tto	<b>CAT. No.</b> HM2H65P1--LF
	CHECKED			
WE RESERVE THE RIGHT TO CHANGE DIMENSIONS OR REQUIREMENTS WITHOUT PRIOR NOTICE.	PROD. MGR.			www.fciconnect.com
	PR. ENG. MGR.			
	PR. MGT. MGR.			SCALE



www.fciconnect.com