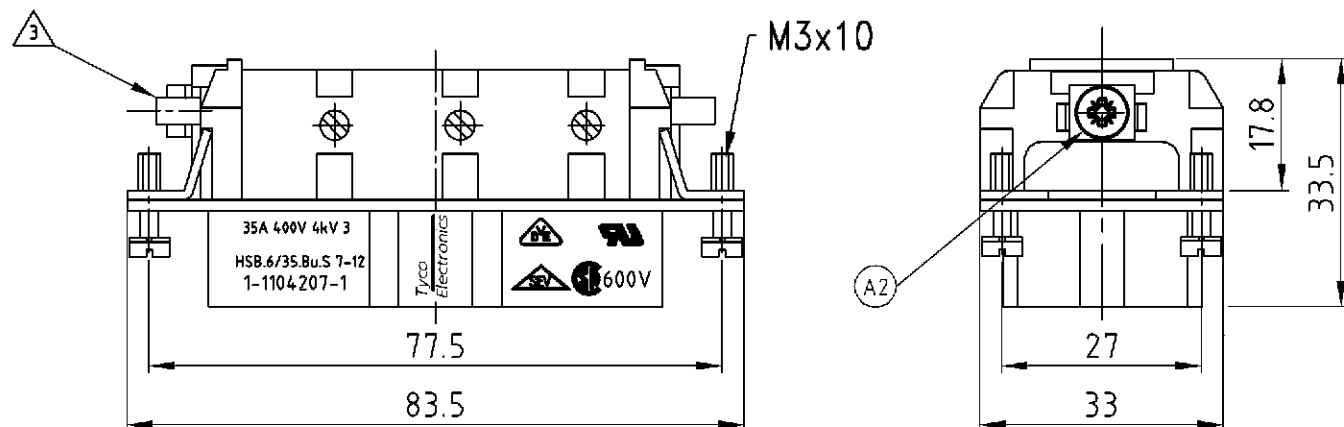


THIS DRAWING IS UNPUBLISHED.  
VERTRÄULICHE UNVERÖFFENTLICHTE ZEICHNUNG  
RELEASED FOR PUBLICATION  
FREI FUER VERÖFFENTLICHUNG  
1997  
BY AMP INCORPORATED. ALL RIGHTS RESERVED.  
ALLE RECHTE VORBEHALTEN

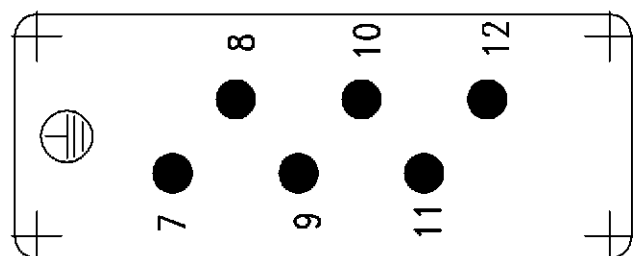
MATED WITH:  
PASSEND ZU:  
HSB 6/35

LOC	DIST	REVISIONS ÄNDERUNGEN		
AI	-	P	LTR	DESCRIPTION BESCHREIBUNG
PROJEKT NR.:		A3	ECR-17-014051	DATE: 05APR18 DWN: SG APVD: MKO

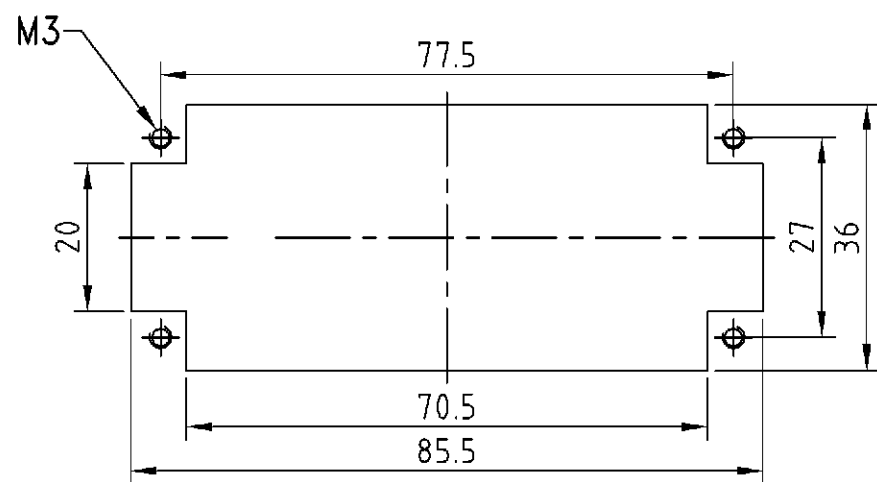


- NOTES
- ① FINISH: CONTACT , AG
  - ② POWER CONTACT: 7 TO 12  
OUTER DIMENSIONS OF INSULATION: MAX.  $\phi$  7.0 MM
  - ③ GROUNDING CONTACT
  - ④ SUITABLE HOOD SIZE 6: SERIES HB; HD; EMV; HIP
  - ⑤ STANDARDS:  
DIN EN 61984; DIN EN 60664-1
  - ⑥ PACKAGING: 5 PIECES IN A CARTON
  - ⑦ - SUPERSEDED BY T2060122201-000

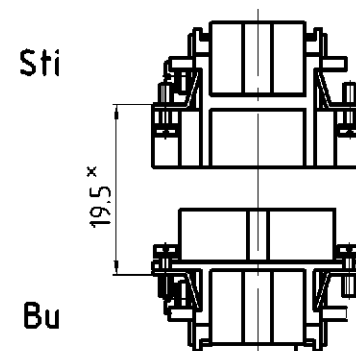
Contact arrangement view from termination side



Panel cut-out for contact insert when used without housing



Assembling instruction



X Distance for guaranteed contact max: 21 mm

1	DESCRIPTION	MATERIAL	COLOR	ITEM NO. POS.	REMARKS
1	Female insert		beige	1	-
1-1	<p>THIS DRAWING IS A CONTROLLED DOCUMENT FOR AMP INCORPORATED. IT IS SUBJECT TO CHANGE AND THE CONTROLLING ENGINEERING ORGANIZATION SHOULD BE CONTACTED FOR THE LATEST REVISION. DIESER ZEICHNUNGSDOKUMENT WIRD DURCH AMP INCORPORATED KONTROLLIERT. ÄNDERUNGEN, DIE DEM TECHNISCHEN FORTSCHRITT DIENEN, SIND VORBEHALTEN. DEN JEWELNS LETZTGÜELTIGEN ÄNDERUNGSSTAND ERFAHREN SIE AUF ANFRAGE.</p> <p>DIMENSIONS: DIMENSIONEN: mm</p> <p>TOLERANCES UNLESS OTHERWISE SPECIFIED: ALLGEMEINTOLERANZEN</p> <p>0 PLC # 1 PLC # 2 PLC # 3 PLC #</p> <p>ANGLES /WINKEL # FINISH /OBERFLÄCHE/FARBE</p> <p>APVD - DWN Rösger 04.06.1998 CHK</p> <p>NAME FEMALE INSERT HSB.6/35.Bu.S. 7-12</p> <p>PRODUCT SPEC PRODUKTSPEZ. 108-74006 APPLICATION SPEC VERARBEITUNGSSPEZ. 114-74007</p> <p>WEIGHT GEWICHT 90 g</p> <p>CUSTOMER DRAWING /KUNDENZEICHNUNG</p>				
HSB.6/35.Bu.S. 7-12	ORDERING TEXT / BESTELLTEXT			SIZE A3	CAGE CODE 00779
				DRAWING NO. ZEICHNUNGS-NR. C-1104207	RESTRICTED TO NUR FUER -
				MASSTAB 1:1	BLATT 1 OF 1
				REV A3	