

4

3

2

1

THIS DRAWING IS UNPUBLISHED.

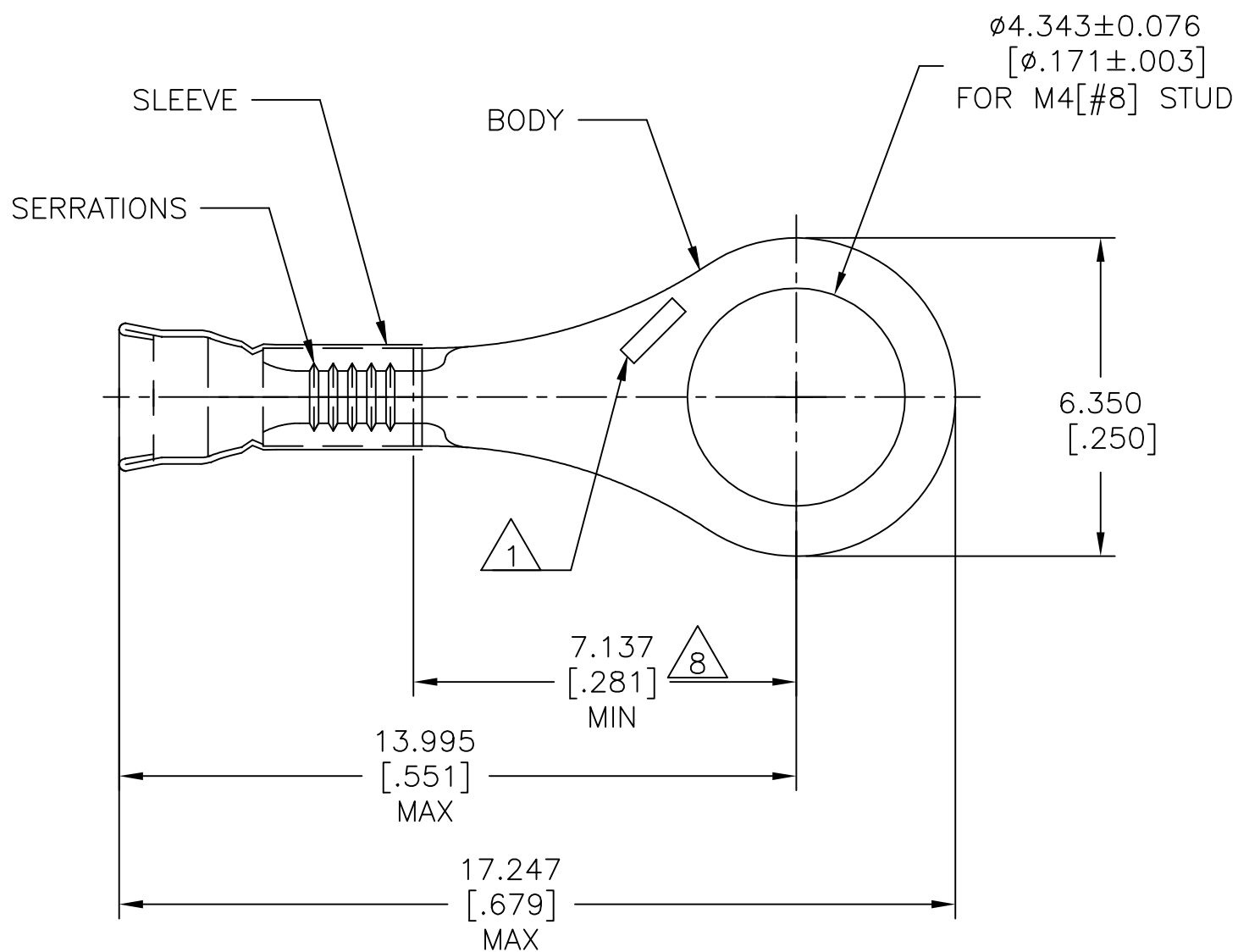
RELEASED FOR PUBLICATION

ALL RIGHTS RESERVED.

© COPYRIGHT - By -

REVISIONS

P	LTR	DESCRIPTION	DATE	DWN	APVD
	A	REL PER ECR 07-029889	12DEC07	JR	MS
	B	REVISED PER ECO-16-017419	13MAR2017	RS	DR
	C	REVISED PER ECO-18-013299	22AUG2018	RS	DR



- 1 STAMP AMP, LOCATE APPROX AS SHOWN.
- 2 WIRE INSULATION DIA 1.270-2.083[.050-.082].
- 3 BODY MATL THK 0.457±0.051[.018±.002].
- 4 MATERIAL:  
BODY - COPPER PER ASTM B-152  
SLEEVE - COPPER PER ASTM B-152.
- 5 FINISH:  
BODY, TIN-LEAD 60/40, 0.00762[.000300] MIN THK  
SLEEVE, TIN-LEAD 60/40, 0.00762[.000300] MIN THK.
- 6 MAXIMUM RECOMMENDED OPERATING TEMP 170°C[338°F] MAX.
- 7 CIRCULAR MIL AREA: 0.10mm-0.41mm<sup>2</sup> [202-810], STRANDED WIRE.
- 8 APPLIES FROM EDGE OF METAL WIRE BARREL TO CENTER OF STUD HOLE.

1000	LOOSE PIECE	696994-1
QTY	PACKAGE TYPE	PART NO

THIS DRAWING IS A CONTROLLED DOCUMENT.		DWN jr ruth 24AUG06	<b>TE</b> TE Connectivity Ltd.	
		CHK M SPICER 24AUG06		
DIMENSIONS: mm [INCHES]		APVD M SPICER 24AUG06	NAME	
TOLERANCES UNLESS OTHERWISE SPECIFIED:		PRODUCT SPEC	TERMINAL, RING, DIAMOND GRIP, WIRE SIZE 26-22 AWG	
0 PLC ± -		APPLICATION SPEC	-	
1 PLC ± -		WEIGHT	-	
2 PLC ± -		SIZE A3 CAGE CODE 00779 C=696994		
3 PLC ± 0.127[.005]		DRAWING NO 696994		
4 PLC ± -		RESTRICTED TO		
5 ANGLES ± 5°		-		
MATERIAL	FINISH	CUSTOMER DRAWING		
4	5	SCALE 8:1	SHEET 1 OF 1	REV C