

1600903-1 ✓ ACTIVE



MULTI-BEAM

TE Internal #: 1600903-1

Rectangular Connector Locking, Secondary Lock, UL 94V-0, -67 – 221 °F [-55 – 105 °C]

[View on TE.com >](#)

Connectors > Rectangular Connectors > Rectangular Connector Accessories > Rectangular Connector Locking



Connector & Contact Retention Accessory Type: **Secondary Lock**

UL Flammability Rating: **UL 94V-0**

Operating Temperature Range: **-55 – 105 °C [-67 – 221 °F]**

### Features

#### Product Type Features

Connector & Contact Retention Accessory Type	Secondary Lock
--	----------------

#### Body Features

Primary Product Color	White
-----------------------	-------

#### Usage Conditions

Operating Temperature Range	-55 – 105 °C[-67 – 221 °F]
-----------------------------	----------------------------

#### Industry Standards

UL Flammability Rating	UL 94V-0
------------------------	----------

#### Packaging Features

Packaging Quantity	1000
Packaging Method	Bag

### Product Compliance

[For compliance documentation, visit the product page on TE.com>](#)

EU RoHS Directive 2011/65/EU	Compliant
EU ELV Directive 2000/53/EC	Compliant



China RoHS 2 Directive MIIT Order No 32, 2016	No Restricted Materials Above Threshold
EU REACH Regulation (EC) No. 1907/2006	Current ECHA Candidate List: JUNE 2023 (235) Candidate List Declared Against: JAN 2023 (233) Does not contain REACH SVHC
Halogen Content	Not Low Halogen - contains Br or Cl > 900 ppm.
Solder Process Capability	Not applicable for solder process capability

Product Compliance Disclaimer

This information is provided based on reasonable inquiry of our suppliers and represents our current actual knowledge based on the information they provided. This information is subject to change. The part numbers that TE has identified as EU RoHS compliant have a maximum concentration of 0.1% by weight in homogenous materials for lead, hexavalent chromium, mercury, PBB, PBDE, DBP, BBP, DEHP, DIBP, and 0.01% for cadmium, or qualify for an exemption to these limits as defined in the Annexes of Directive 2011/65/EU (RoHS2). Finished electrical and electronic equipment products will be CE marked as required by Directive 2011/65/EU. Components may not be CE marked. Additionally, the part numbers that TE has identified as EU ELV compliant have a maximum concentration of 0.1% by weight in homogenous materials for lead, hexavalent chromium, and mercury, and 0.01% for cadmium, or qualify for an exemption to these limits as defined in the Annexes of Directive 2000/53/EC (ELV). Regarding the REACH Regulation, the information TE provides on SVHC in articles for this part number is based on the latest European Chemicals Agency (ECHA) 'Guidance on requirements for substances in articles' posted at this URL: <https://echa.europa.eu/guidance-documents/guidance-on-reach>

## Compatible Parts

TE Part # 1600960-1  
CONT 8-10AWG PWR BLANK STRIP

## Customers Also Bought

TE Part #1-5499786-0  
A/L UNIV HDR 50P RA LG LAT

TE Part #5557730-1  
MJ,TE,8P/8C,SHLD,PNL STOPS&G

TE Part #3-640663-1  
MINI AMP-IN 26-22 PTPHBZ

TE Part #1600798-2  
STR RCPT ASSY MBXL W/KEYS 2ACP



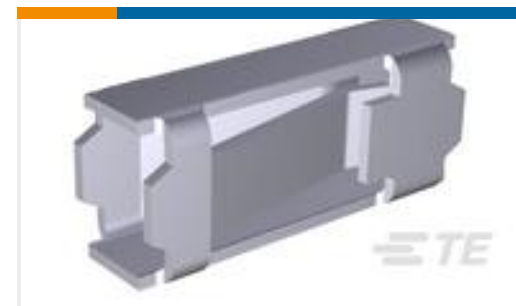
TE Part #1600606-2  
PANEL MT RECPT HSG W/GUIDES P



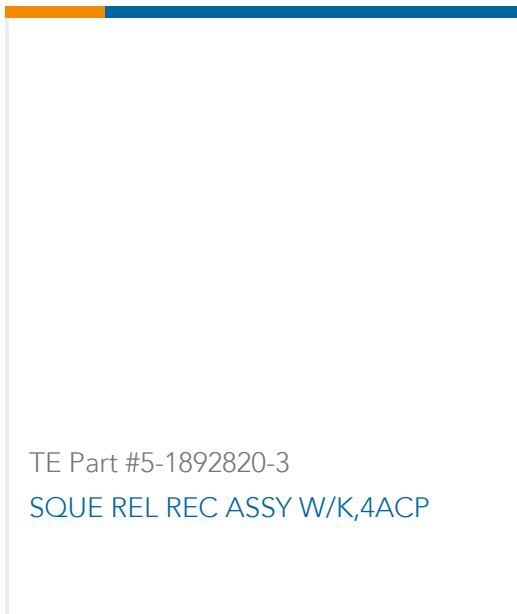
TE Part #2-320559-4  
SPLICE BUTT PIDG 22-16; TAPE



TE Part #4-1611009-6  
3100-30Q10999CG=40A 3P 24V MOD



TE Part #85489-7  
MOD I RECP PLTD 30 SEL



TE Part #5-1892820-3  
SQUE REL REC ASSY W/K,4ACP

## Documents

### Product Drawings

[2NDARY RCPT PWR VERT BLKHED MT](#)

English

### CAD Files

[3D PDF](#)

English

[Customer View Model](#)

[ENG\\_CVM\\_1600903-1\\_A.2d\\_dxf.zip](#)

English

[Customer View Model](#)

[ENG\\_CVM\\_1600903-1\\_A.3d\\_igs.zip](#)

English

[Customer View Model](#)

[ENG\\_CVM\\_1600903-1\\_A.3d\\_stp.zip](#)

English

By downloading the CAD file I accept and agree to the [Terms and Conditions](#) of use.

### Datasheets & Catalog Pages

[POWER\\_CONNECTORS\\_CATALOG\\_SEC01\\_BOARD\\_TO\\_BOARD](#)

English

### Product Specifications

[Application Specification](#)

English

[Application Specification](#)

English



**Product Environmental Compliance**

[MD\\_1600903-1\\_031320182258\\_dmtec](#)

English

[MD\\_1600903-1\\_031320182258\\_dmtec](#)

English