

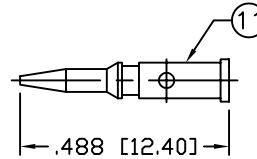
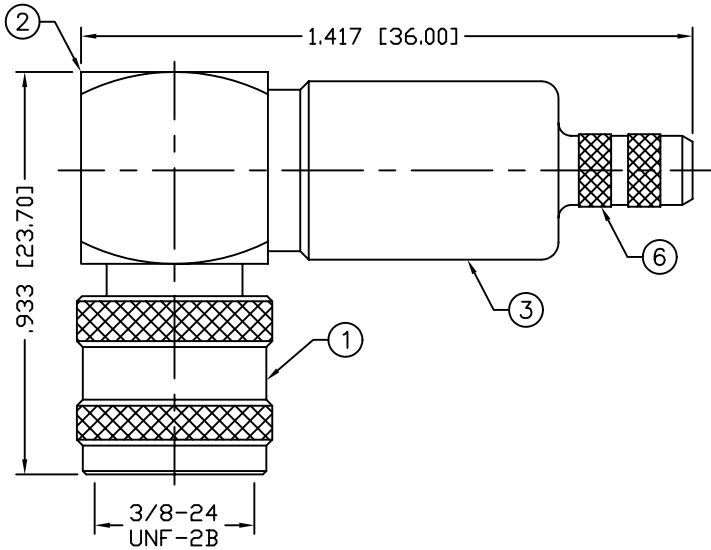
THIS DRAWING CONTAINS INFORMATION PROPRIETARY TO RF INDUSTRIES,  
 ANY UNAUTHORIZED USE OF THIS DRAWING IS EXPRESSLY PROHIBITED  
 WITHOUT WRITTEN PERMISSION FROM RF INDUSTRIES.  
 ANY VIOLATION IS PUNISHABLE UNDER U.S. COPYRIGHT LAWS.

ALL DIMENSIONS ARE REFERENCE ONLY

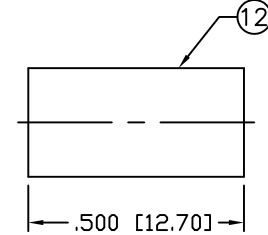
PART NO.

# RFU-600-10C

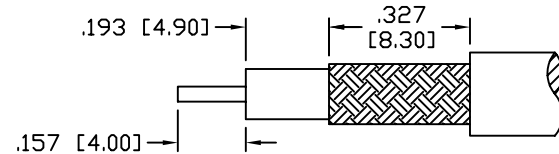
| REV | DESCRIPTION                                  | DWN | DATE     | APPROVED |
|-----|--|-----|----------|----------|
| A   | ENGINEERING RELEASE                          | CZS | 3/23/99  | R. RICE  |
| B   | UPDATE CONNECTOR DESIGN, DWG. FORMAT & SPECS | CZS | 07/02/04 | JDMc     |
|     |  |     |          |          |



RECOMMENDED CRIMP DIE: .068"



RECOMMENDED CRIMP DIE: .213"



RECOMMENDED STRIPPING DIMENSIONS

## SPECIFICATIONS:

IMPEDANCE: 50 Ohms  
 FREQUENCY RANGE: 0-2.5 GHz  
 VSWR: 1.3 MAX.  
 WORKING VOLTAGE: 335 V rms Max. @ Sea Level  
 INSULATION RESISTANCE: 5k M Ohms min.  
 TEMPERATURE RANGE: -65°C TO 165°C  
 FOR RG-58, 58A, 58C, 141, 141A, BELDEN 8240, 9907  
 8259, 8262, 9201, 9203, 9310, 9311 & COMM/SCOPE 0268

| 1 SHELL          | 1 BRASS       | NICKEL, 100μ" | 008974   |                        |           |      |
|------------------|---------------|---------------|----------|------------------------|-----------|------|
| 2 BODY           | 1 BRASS       | NICKEL, 100μ" |          |                        |           |      |
| 3 PRESS BODY     | 1 BRASS       | NICKEL, 100μ" |          |                        |           |      |
| 4 INSULATOR      | 1 PTFE        | ---           |          |                        |           |      |
| 5 CONTACT        | 1 PHOS BRONZE | GOLD, 3μ"     |          |                        |           |      |
| 6 FERRULE STUD   | 1 BRASS       | NICKEL, 100μ" |          |                        |           |      |
| 7 INSULATOR      | 1 PTFE        | ---           |          |                        |           |      |
| 8 PIN            | 1 BRASS       | GOLD, 3μ"     |          |                        |           |      |
| 9 RETAINING RING | 1 SST         | ---           |          |                        |           |      |
| 10 PRESS CAP     | 1 BRASS       | NICKEL, 100μ" |          | DRAWN<br>C. ZUNIGA     |           |      |
| 11 PIN           | 1 BRASS       | GOLD, 3μ"     |          | 9/12/06                |           |      |
| 12 FERRULE       | 1 BRASS       | NICKEL, 100μ" |          | CHECKED                |           |      |
| 13               |               |               |          | ORJ DRAWN<br>C. ZUNIGA |           |      |
| 14               |               |               |          | 3/23/99                |           |      |
| #                | DESCRIPTION   | QTY           | MATERIAL | FINISH                 | APPROVALS | DATE |

## RoHS COMPLIANT

DIMENSIONS ARE IN INCHES  
 AND [MILLIMETERS]  
 UNLESS OTHERWISE NOTED  
 TOLERANCES ARE:  
 DECIMALS      DIAMETER

# RF connectors

DIVISION OF RF INDUSTRIES, LTD.

7610 MIRAMAR RD  
 SAN DIEGO, CA 92126  
 (858) 549-6340  
 (858) 549-6345 FAX

## MINI-UHF PLUG

CRIMP, RIGHT ANGLE

| SIZE       | CABLE GROUP | DWG NO.          | REV          |
|------------|-------------|------------------|--------------|
| A          | C           | RFU-600-10C      | B            |
| SCALE: NTS |             | CAD FILE OUTLINE | SHEET 1 OF 1 |