

CUSTOMER PRINT

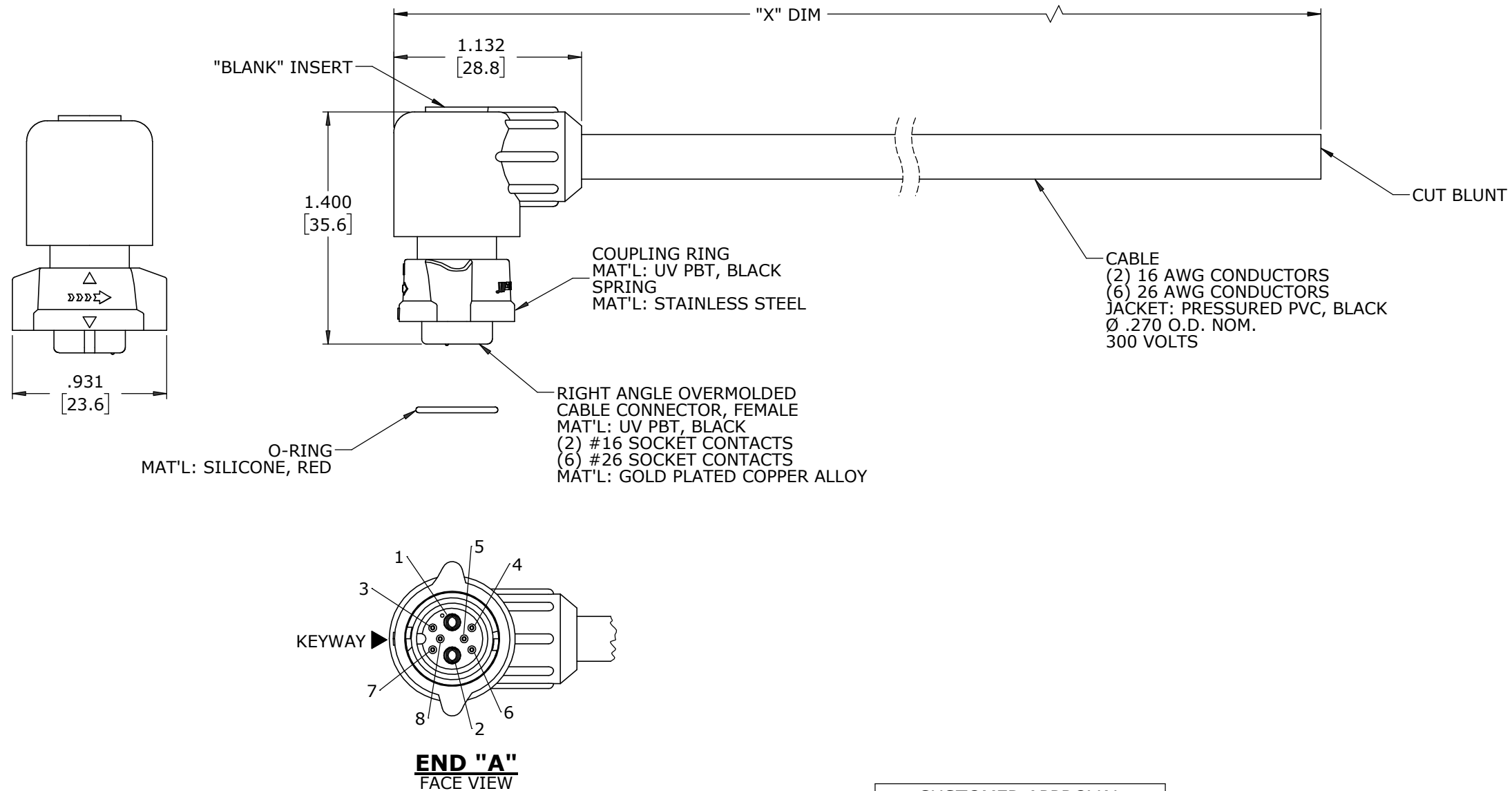
PART NUMBER: CARA6A808SPXXX90

NOTES:

1. FINISHED PRODUCT TO BE COILED
2. OVERMOLD BOOT MATERIAL: UV PBT, BLACK
3. ELECTRICAL TEST: 100% CONTINUITY
4. ALL DIMENSIONS ARE REFERENCE EXCEPT THOSE WITH A TOLERANCE

ASS'Y P/N	"X" DIM
CARA6A808SP03990	3 FT. 3 1/2 IN. ±2 IN. [1M ±50.8mm]
CARA6A808SP07990	6 FT. 7 IN. ±2 IN. [2M ±50.8mm]
CARA6A808SP19790	16 FT. 5 IN. ±4 IN. [5M ±101.6mm]
CARA6A808SP39490	32 FT. 9 3/4 IN. ±8 IN. [10M ±203.2mm]
CARA6A808SPXXX90	

CABLE CUT LENGTH IN "INCHES"



WIRE COLOR CODE							
POS. 1	POS. 2	POS. 3	POS. 4	POS. 5	POS. 6	POS. 7	POS. 8
BLK	WHT	BRN	RED	YEL	GRN	GRY	BLU
16 AWG	16 AWG	26 AWG	26 AWG	26 AWG	26 AWG	26 AWG	26 AWG

DIMENSIONS IN BRACKETS [] ARE IN MILLIMETERS UNLESS INDICATED

CUSTOMER APPROVAL

THIS DOCUMENT CONTAINS CONFIDENTIAL INFORMATION PROPRIETARY TO CONXALL CORPORATION. ANY REPRODUCTION, DISCLOSURE, OR USE OF THIS DOCUMENT /INFORMATION IS EXPRESSLY PROHIBITED UNLESS AUTHORIZED IN WRITING BY CONXALL CORPORATION.

APPROVED BY: _____

DATE: _____

RoHS COMPLIANT

A	MA	08-13-21	DRAWING CREATED PER DOR 21-109361DS-1
REV.	INIT.	DATE	DESCRIPTION
	MA	08-13-21	ORIG. DRAWN BY: MA DATE: 08-13-21
ALL INFORMATION ILLUSTRATED IS THE PROPERTY OF "CONXALL CORPORATION." UNAUTHORIZED DUPLICATION OR DISTRIBUTION OF THIS DOCUMENT IS PROHIBITED.			<p>601 E. WILDWOOD VILLA PARK, IL 60181</p>
ALL UNITS ARE IN FEET, INCHES, FRACTION OF INCHES AND DECIMALS.			
APPROVED BY:		TITLE: CABLE ASSEMBLY, RA	
SCALE: NTS		2#16/6#26 SOCKET CONTACTS	
SIZE: B		INSTA-CLICK™ MINI-CON-X MIX SIG BULLET	
SHEET: 1 OF 1		CUSTOMER: STANDARD PRODUCT	
FILE: CARA6A808SPXXX90	DIRECTORY: SLW	PART NUMBER: CARA6A808SPXXX90	REV A