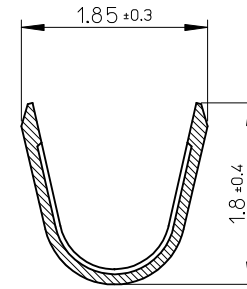
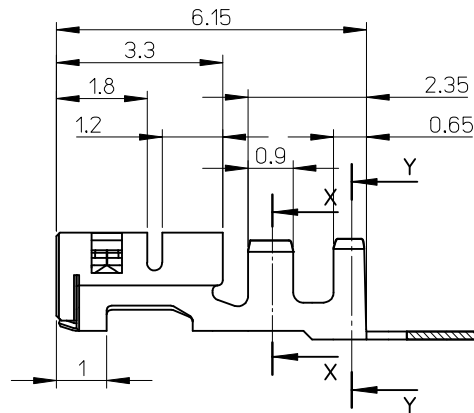
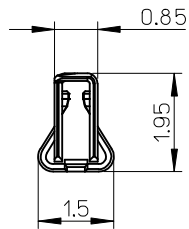
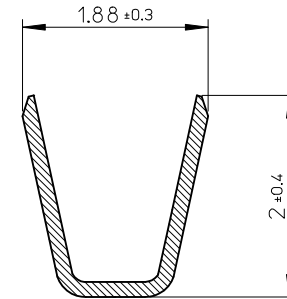


NOTES

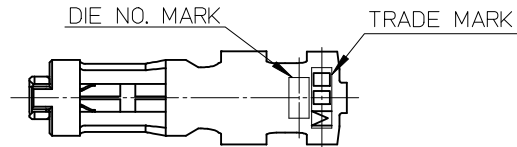
1. 使用材料: 銅合金、錫メッキ(t=0.15)  
MATERIAL: COPPER ALLOY, PRE-TINNED (t=0.15)
2. 適合ハウジング: 505151シリーズ  
APPLICABLE HOUSING: 505151 SERIES
3. ELV及のRoHS適合  
ELV AND ROHS COMPLIANT
4. アプリケーション仕様書(コネクタ取扱説明書): AS-505151-001/-002  
APPLICATION SPECIFICATION (CONNECTOR MANUAL):
5. 製品仕様書: PS-505151-001  
PRODUCT SPECIFICATION:
6. 圧着視覚教材(品質要領書): ATS-57427-0000  
CRIMPING VISUAL AID:



SECTION X-X  
SCALE 20:1



SECTION Y-Y  
SCALE 20:1



5051538000	CHAIN
MATERIAL NO.	FORM

RELEASED EC NO: J2015-0035 DRWN: MIKEDA01 2014/06/30 CHKD: KASAKAWA 2014/07/11 APPR: NUKITA 2014/07/15 0	DESCRIPTION GENERAL TOLERANCES (UNLESS SPECIFIED) 10 UNDER ± 0.2 10 OVER 30 UNDER ± 0.25 30 OVER ± 0.3 ANGULAR ± 3 ° DRAFT WHERE APPLICABLE MUST REMAIN WITHIN DIMENSIONS	DIMENSION STYLE MM ONLY	SCALE 10:1	DESIGN UNITS METRIC	THIRD ANGLE PROJECTION	
		DRAWN BY MIKEDA01	DATE 2014/03/03	TITLE 2.0MM PITCH W/B CONN. REC TERMINAL		
		CHECKED BY KASAKAWA	DATE 2014/03/04	APPROVED BY NUKITA 2014/03/28		
		MATERIAL NO. SEE CHART		DOCUMENT NO. SD-505153-001	SHEET NO. 1 OF 1	

WIRE RANGE  
AWG: #22, #24

INSULATION RANGE  
Ø1.5 MAX.



THIS DRAWING CONTAINS INFORMATION THAT IS PROPRIETARY TO MOLEX INCORPORATED AND SHOULD NOT BE USED WITHOUT WRITTEN PERMISSION