

General Purpose RFI Filters for High Impedance Loads at Low Current

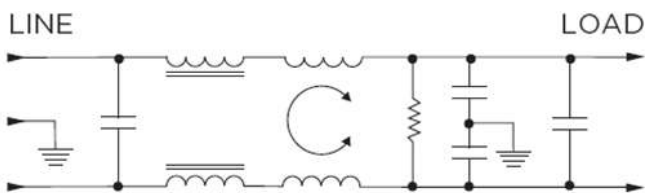
AMI-M12T/M12U/M12V Series

Metal Enclosure Single Phase Two Stage

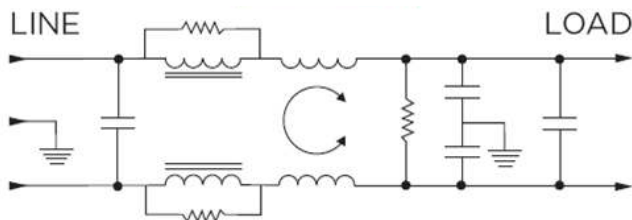
AMI Designation	Input/output Style		Current Rating	Inductance	Capacitance		Resistor	Leakage Current @ 120 VAC 60Hz/250 VAC 50Hz	TIL Insertion Loss	Case Style
					Cx	Cy				
Available Part Numbers	6.3mm Spades Terminals	Wire Leads	A	mH	nF	pF	K Ω	mA		
					AMI-M12T-1-3-B	1		-		
AMI-M12T-1-6-B	1	-	6	1.8	540	5500	330	0.4/0.7	002	A
AMI-M12T-1-10-B	1	-	10	1.2	540	5500	330	0.4/0.7	003	A
AMI-M12U-1-20-B	1	-	20	0.9	810	5500	330	0.4/0.7	004	B
AMI-M12U-6-20-B	-	6	20	0.9	810	5500	330	0.4/0.7	004	C
AMI-M12V-6-60-B	-	6	60	0.27	1470	10000	330	0.75/1.25	005	D

Electrical Schematic

Type 1 AMI-M12T-1-3/6/10



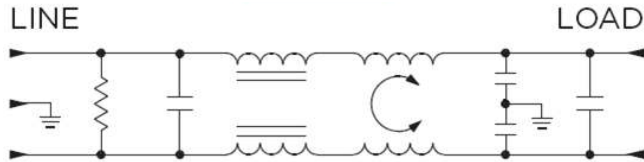
Type 2 AMI-M12U-1-20 & AMI-M12U-6-20



General Purpose RFI Filters for High Impedance Loads at Low Current

Electrical Schematic

Type 3 AMI-M12V-6-60



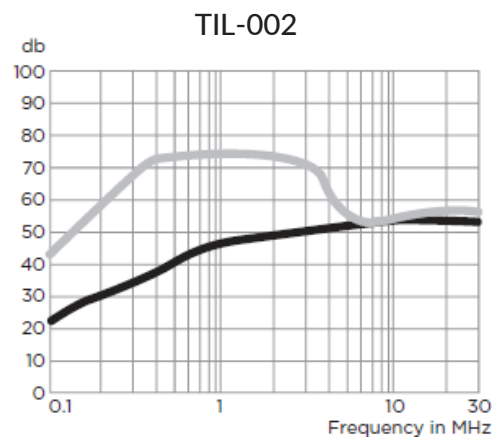
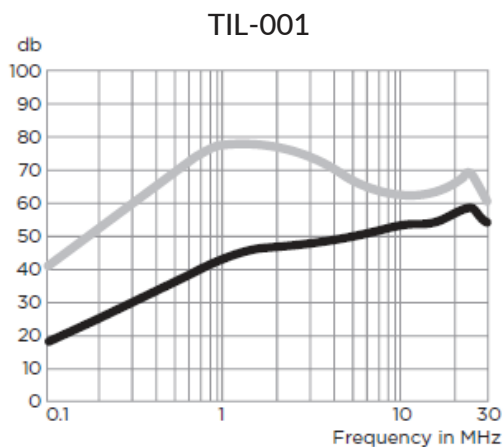
Specifications:

- Rated Voltage (max): 250 VAC
- Operating Frequency: 50/60 Hz
- Operating Current: 3 to 60 A
- Hi-pot Rating (one minute): Line to Ground: 2250 VDC
Line to Line: 1450 VDC
- Operating Ambient Temperature Range (at rated current I_r): -10°C to $+40^{\circ}\text{C}$. In an ambient temperature (T_a) higher than $+40^{\circ}\text{C}$ the maximum operating current (I_o) is calculated as follows: $I_o = I_r \sqrt{[(85 - T_a)/45]}$

Performance Data

Typical Insertion Loss

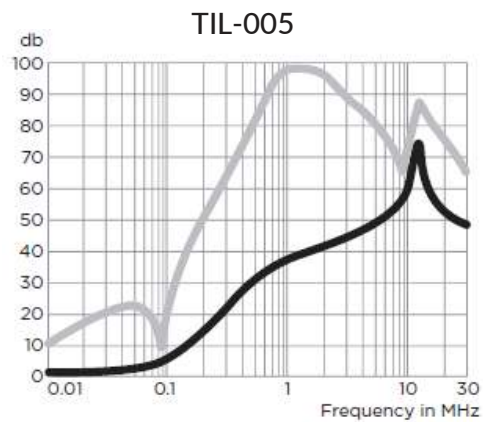
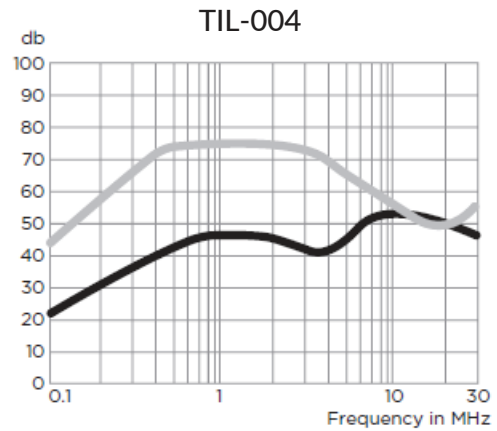
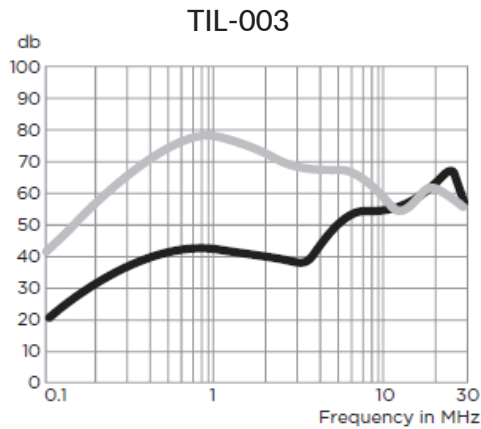
Measured in closed 50 Ohm system



General Purpose RFI Filters for High Impedance Loads at Low Current

Performance Data Typical Insertion Loss

Measured in closed 50 Ohm system



— Common Mode / Asymmetrical (L-G)
— Differential Mode / Symmetrical (L-L)

General Purpose RFI Filters for High Impedance Loads at Low Current

Minimum Insertion Loss

Measured in closed 50 Ohm system

Common Mode/Asymmetrical (Line to Ground)

Current Rating	Frequency-MHz							
	.15	.5	1	2	5	10	20	30
3A	15	27	35	40	32	44	47	47
6A	15	27	35	40	32	44	47	47
10A	15	27	35	40	32	44	47	47
20A	15	30	38	38	32	43	42	40
60A	7	27	34	38	45	54	44	40

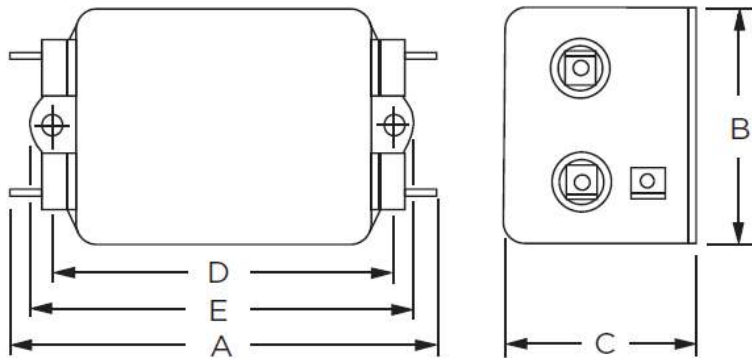
Differential Mode/Symmetrical (Line to Line)

Current Rating	Frequency-MHz								
	.15	.3	.5	1	2	5	10	20	30
3A	35	50	65	65	65	60	50	40	45
6A	35	50	65	65	65	60	45	48	48
10A	35	50	65	65	65	60	50	40	45
20A	35	50	65	65	65	60	45	48	48
60A	37	-	77	93	86	70	54	64	54

General Purpose RFI Filters for High Impedance Loads at Low Current

Case Styles

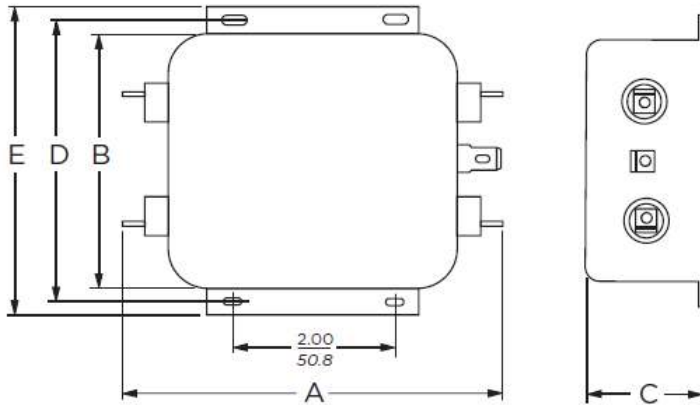
STYLE A



Typical Dimensions:

Line/Load Terminals (4):	.250 [6.3] with .07 [1.8] Dia. hole
Ground Terminal (1):	.250 [6.3] with .07 x .16 [1.8 x 3.8] slot
Mounting Holes (2):	.188 [4.78] Dia.

STYLE B



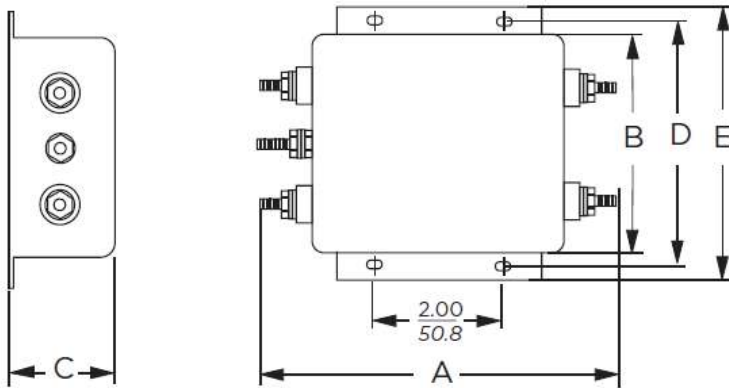
Typical Dimensions:

Line/Load Terminals (4):	.250 [6.3] with .07 [1.8] Dia. hole
Ground Terminal (1):	.250 [6.3] with .07 x .16 [1.8 x 3.8] slot
Mounting Slots (4):	.250 x .156 [6.35 x 3.96] Dia.

General Purpose RFI Filters for High Impedance Loads at Low Current

Case Styles

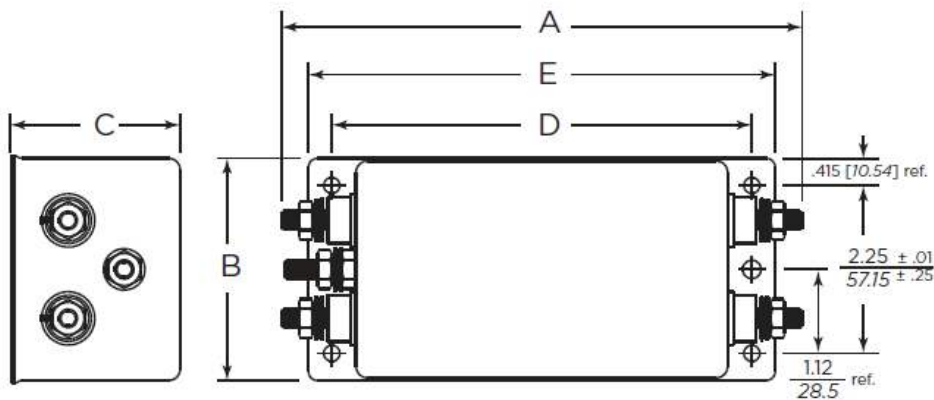
STYLE C



Typical Dimensions:

Terminals (5): 8-32, Torque 18 lbf-in. [2.03 N-m] max. ± 2 [.22]
 Mounting Slots (4): .250 x .156 [6.35 x 3.96] Dia.

STYLE D



Typical Dimensions:

Terminals (5): 1/4-20, Torque 56 lbf-in. [6.32 N-m] max. ± 2 [.22]
 Mounting Holes (5): .218 [5.53] Dia. \pm .006 [.152]

General Purpose RFI Filters for High Impedance Loads at Low Current

Case Dimensions:

Model Number	A max	B max	C max	D $\begin{smallmatrix} \pm .015 \\ \pm .38 \end{smallmatrix}$	E max
AMI-M12T-1-3	3.36"/85.3mm	1.82"/46.2mm	1.16"/29.5mm	2.375"/60.33mm	2.78"/70.6mm
AMI-M12T-1-6	3.86"/98.0mm	2.08"/52.8mm	1.53"/38.9mm	2.938"/74.63mm	3.34"/84.8mm
AMI-M12T-1-10	3.86"/98.0mm	2.08"/52.8mm	1.53"/38.9mm	2.938"/74.63mm	3.34"/84.8mm
AMI-M12U-1-20	5.23"/132.8mm	3.38"/85.9mm	1.53"/38.9mm	3.75"/95.25mm	4.20"/106.7mm
AMI-M12U-6-20	5.34"/135.6mm	3.38"/85.9mm	1.53"/38.9mm	3.75"/95.25mm	4.20"/106.7mm
AMI-M12V-6-60	7.2"/182.88mm	3.08"/78.23mm	2.28"/57.91mm	5.625"/142.87mm	6.25"/158.75mm