

Flush-type connector - SACC-E-M12MS-8CON-M12 PSCUP - 1436440


Please be informed that the data shown in this PDF Document is generated from our Online Catalog. Please find the complete data in the user's documentation. Our General Terms of Use for Downloads are valid (<http://download.phoenixcontact.com>)



Sensor/actuator flush-type connector, socket, 8-pos., M12, A-coded, front/screw mounting with M12 thread, with solder cups, plastic version



Key commercial data

Packing unit	1 PCE
Minimum order quantity	20 PCE
Catalog page	Page 36 (PC-2011)
GTIN	 4 046356 438391
Custom tariff number	85366990
Country of origin	GERMANY

Technical data

General data

Rated current at 40°C	2 A
Rated voltage	30 V
Number of positions	8
Volume resistance	≤ 3 mΩ
Insulation resistance	≥ 100 MΩ
Ambient temperature (operation)	-25 °C ... 85 °C (Plug / socket)

General characteristics

Standards/regulations	M12 plug-in connector IEC 61076-2-101
Coding	A - standard
Surge voltage category	II
Pollution degree	3
Degree of protection	IP67

Flush-type connector - SACC-E-M12MS-8CON-M12 PSCUP - 1436440

Technical data

General characteristics

Contact material	CuZn
Contact surface material	Au
Contact carrier material	PA 66
Material, knurls	PA 66
Sealing material	Viton
Mounting type	Front mounting M12 x 1 With flat nut
Connection method	Solder cup
Status display	No

Classifications

ETIM

ETIM 3.0	EC002061
ETIM 4.0	EC002061
ETIM 5.0	EC002061

UNSPSC

UNSPSC 11	31251501
UNSPSC 12.01	31251501
UNSPSC 13.2	31251501
UNSPSC 6.01	31251501
UNSPSC 7.0901	31251501

eCl@ss

eCl@ss 4.0	27250313
eCl@ss 4.1	27250313
eCl@ss 5.0	27143423
eCl@ss 5.1	27143423
eCl@ss 6.0	27143423
eCl@ss 7.0	27449001

Approvals

Approvals

Approvals

GOST

Flush-type connector - SACC-E-M12MS-8CON-M12 PSCUP - 1436440

Approvals

Ex Approvals

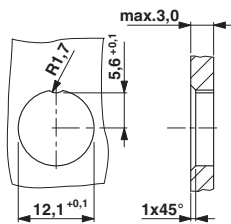
Approvals submitted

Approval details

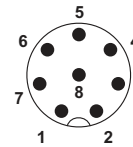


Drawings

Dimensioned drawing



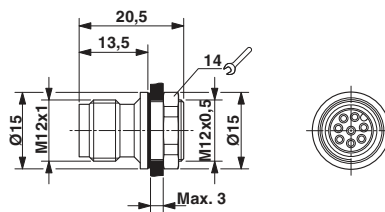
Schematic diagram



Pin assignment M12 plug, 8-pos., A-coded, view plug side

Housing cutout for M12 fastening thread, mounting panel with feed-through hole

Dimensioned drawing



M12 flush-type connector