

# CS47024/28/48 Audio SoC

## HIGH PERFORMANCE MULTICHANNEL CODEC + 32-BIT DSP

### CS470xx TARGET MARKETS



AUTOMOTIVE HEAD-END UNITS



AUTOMOTIVE OUTBOARD AMPLIFIERS



HOME THEATER IN A BOX

### CIRRUS LOGIC, INC.

2901 Via Fortuna  
Austin, Texas 78746

United States

T +1-512-851-4000

F +1-512-851-4977

Toll-Free +1-800-888-5016

### SALES SUPPORT

North America +1 800-625-4084

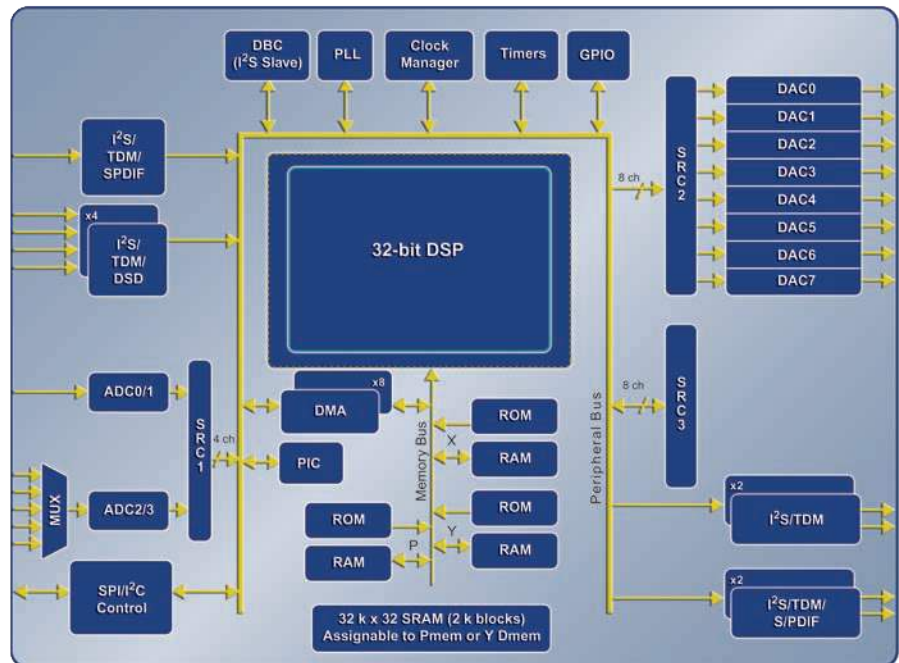
Asia Pacific +852 2376-0801

Japan +81 (3) 5226-7757

Europe/UK +44 (90) 1628-891-300

LEARN MORE AT

[www.cirrus.com](http://www.cirrus.com)



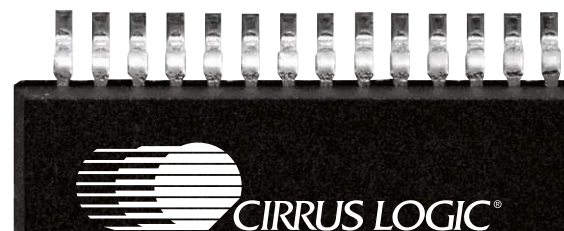
### CS470xx FAMILY FEATURES

- Multichannel 32-bit audio processing at 150 MHz with dual MACs & 72-bit accumulator
- Advanced Delta-Sigma converter architecture
- Single-ended or differential analog I/O
- Up to 4-channel 24-bit, 105 dB ADC
- Stereo 5:1 analog input MUX
- Up to 8-channel 24-bit, 105 dB DAC
- Integrated 192 kHz S/PDIF Rx and Tx
- Integrated multichannel, reassignable SRCs
- Supports both TDM (Time-division Multiplexed) and standard serial audio formats
- SPI™/I2C® serial control port
- Low-power standby: 350  $\mu$ W
- 32 Kx32 RAM which is reassignable
- DSP Composer GUI simplifies programming and generation of custom signal processing using extensive library of primitives
- Licensed third party audio processing algorithms in ROM, plus extensive library of Cirrus proprietary downloadable and customizable firmware—see back for partial list of algorithms

The CS470xx Family audio SoC gives OEMs a cost-effective and simple-to-design audio processing solution with integrated high-performance mixed-signal that provides an extensive selection of enhanced audio features to maximize the end user's listening experience within the automotive entertainment space.

### CS470xx FAMILY KEY BENEFITS

- Excellent development tools to simplify system design and provide faster time to market
- Easy to design – most standard processing features and some third party algorithms in ROM
- Best in class analog performance and sound quality
- High level of integration enables small PCB footprint and lower system cost
- No external memory needed



## DSP GUI PROGRAMMING ENVIRONMENT WITH CS470xx DEVELOPMENT PLATFORM

### CS470xx ORDERING INFORMATION

#### Device(s)

CS47048-DQZ (Automotive)  
 CS47048-CQZ (Commercial)  
 CS47028-DQZ (Automotive)  
 CS47028-CQZ (Commercial)  
 CS47024-DQZ (Automotive)  
 CS47024-CQZ (Commercial)

#### Package

100-Pin LQFP

#### Evaluation Board

CDB470XS-DC48/-DC28/-DC24 (Single-ended)  
 CDB470XD-DC48/-DC28/-DC24 (Differential)

#### Documentation

CS470xx Data Sheet  
 CS470xx System Designer's Guide

#### Tools

DSP Composer™  
 GUI Software Tool  
 MicroCondenser™

#### Standard Processing

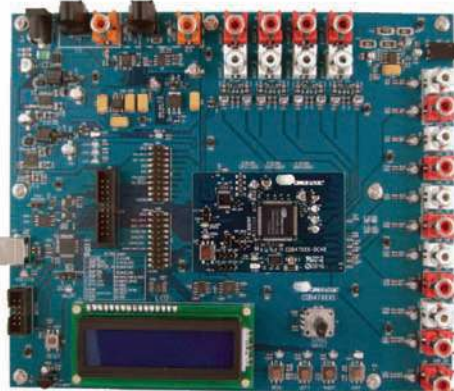
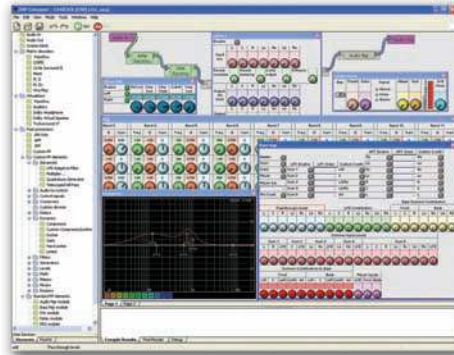
Advanced Bass Management  
 Compressor/Limiter  
 Crossbar Mixer  
 Independent Channel Delay  
 Matrix Mixer  
 Multiband Parametric/Graphic EQ  
 Multichannel Tone Control  
 And many more...

#### Cirrus Proprietary Algorithm Support

Cirrus BandXpander™  
 Cirrus Bass Enhancement (CBE)  
 Cirrus Original Multichannel Surround™/II (COMS2) for Hall, Theater, etc. DSP effects  
 Cirrus Dynamic Volume Leveler™  
 Cirrus Intelligent Room Correction™/II (IRC/IRC2)  
 Cirrus® Virtualizer Technology (CVT)—Headphone and Speaker modes

#### Extensive Third Party Algorithm Support/Capability

Audistry® by Dolby®  
 Audyssey Dynamic EQ®  
 Audyssey Dynamic Volume®  
 Cirrus® Virtualizer Technology (CVT)—Headphone and Speaker modes  
 Dolby® Pro Logic® II, IIx, IIz  
 Dolby Headphone®  
 EmbracingSound® Technologies  
 Neural-THX® Surround  
 SRS® Automotive™  
 SRS® CircleSurround® II  
 SRS® TruSurround® XT™/HD™/HD4™  
 SRS® TruVolume  
 SRS® WOW/WOW HD™  
 Waves™ MaxxBass®



The CS470xx Family is programmed using Cirrus Logic's proprietary GUI software development tool called DSP Composer.™ An audio processing chain is designed using a drag and drop interface. The tool then configures the CS470xx device through the SPI™/I<sup>2</sup>C® serial port. The firmware may be loaded from the ROM within the CS470xx device or it may be downloaded through the serial control port.

## CS470xx FAMILY DEVICES & FEATURES

Part	Processor	Speed (MIPS)	Car Audio DSPs	General Audio DSPs	Resolution (bits)	Dynamic Range (dB)	A/D Channels	D/A Channels	Comments	Package
<b>CS470xx</b>	<b>Tiny, cost effective, mega-performance PCM processors with integrated CODEC targeted for mini-systems, DVD receivers, speakerbars, car audio, DTVs</b>									
<b>NEW CS47024</b>	Single 32-bit	150	CS47024C-DQZ	CS47024C-CQZ	24	108 DAC 105 ADC	2	4	2 Ch ADC w/ 5:1 MUX, 4 Ch DAC, S/PDIF Tx, SRC (2 Ch)	100 LQFP
<b>NEW CS47028</b>	Single 32-bit	150	CS47028C-DQZ	CS47028C-CQZ	24	108 DAC 105 ADC	2	8	2 Ch ADC w/ 5:1 MUX, 8 Ch DAC, S/PDIF Rx/Tx, SRC (8 Ch)	100 LQFP
<b>NEW CS47048</b>	Single 32-bit	150	CS47048C-DQZ	CS47048C-CQZ	24	108 DAC 105 ADC	4	8	4 Ch ADC w/ 5:1 MUX on one 2 Ch ADC, 8 Ch DAC, S/PDIF Rx/Tx, SRC (8 Ch)	100 LQFP