

REFERENCE SPECIFICATIONS

-NFC 93425 (in compliance with HE 507)

PHYSICAL CHARACTERISTICS

-INSULATOR MATERIAL: THERMOPLASTIC .UL94V0

-ACCESSORIES: BRASS

-SHELLS: STEEL

ELECTRICAL CHARACTERISTICS

-CONTACT/CONTACT : >=1000 V

-CONTACT/GROUND : >=1200 V

-INSULATION RESISTANCE: >=5000 MOhms

ENVIRONMENTAL CHARACTERISTICS

- CLIMATIC CATEGORY: 55/125/21

TEMPERATURE RANGE -55°C TO +125°C

DAMP HEAT STEADY STATE 21 DAYS

SALT SPRAY 24 HOURS

MECHANICAL CHARACTERISTICS

- RETENTION AGAINST TORQUE:
  - Threaded insert: 0.7 N.m minimum
  - Female screw : 0.5 N.m minimum

Series ← DBLSW5PA00LF

Shell size: E A B C  
see sheet 2

Front accessory definition  
see sheet 2

- Blank : Without accessory
- L : Threaded insert M3
- O : Threaded insert UNC 4-40
- V : Female screw UNC 4-40

Layout of contacts (see sheet 3)

Contacts  
P :Pin

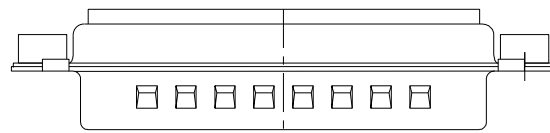
PCB accessory definition  
A without accessory on PCB

Power contacts  
00 without power contact

See note RoHS

NOTE RoHS INFORMATION

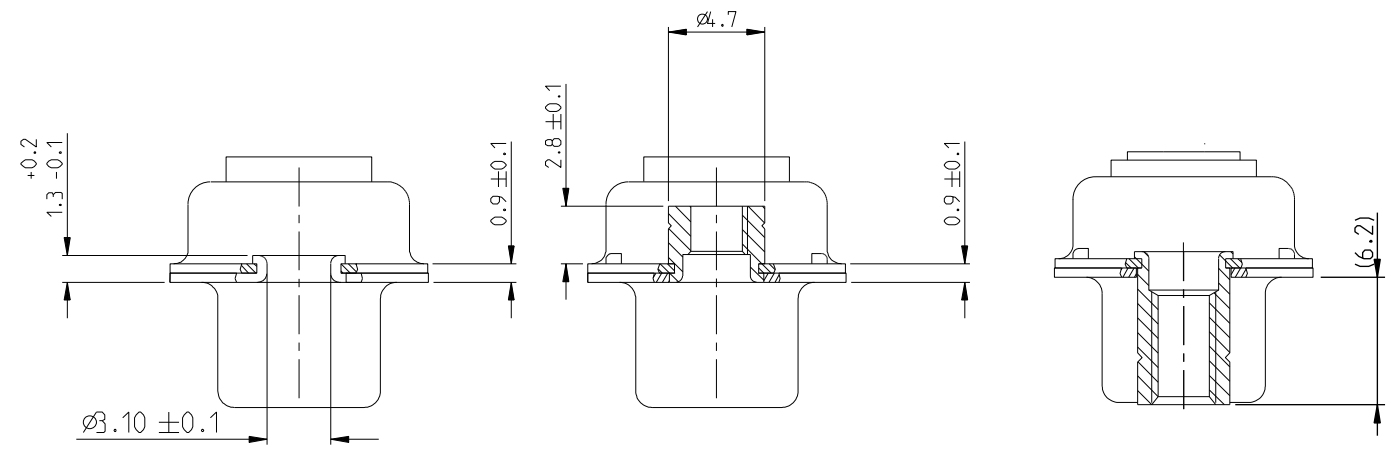
- The "LF" products meet european union Directives and other country regulations as described in GS-22-008.
- Shell plating :2 to 4 μm Cu + Ni + 3 to 10 μmm Sn(pure bright)
- Accessories: Sn pure bright + nickel
- Packaging spec: See GS-14-920



| rev | ecn no    | dr  | date       |
|-----|-----------|-----|------------|
| A   | LS05-0113 | MPE | 2005-11-28 |
| B   | LS06-0208 | LGO | 2006-12-13 |
| C   | LS07-0273 | MPE | 2007-11-05 |
| D   | F09-0076  | LSA | 2009-08-20 |
| E   | F10-0017  | LSA | 2010-03-10 |
| -   | -         | -   | -          |
| -   | -         | -   | -          |

|                                       |          |                     |                                   |                  |
|---------------------------------------|----------|---------------------|-----------------------------------|------------------|
| www.fciconnect.com                    |          | surface<br>ISO 1302 | tolerance std<br>ISO 406 ISO 1101 | projection<br>mm |
| TOLERANCES UNLESS OTHERWISE SPECIFIED |          |                     |                                   |                  |
| Dr                                    | M PESSON | 2005-10-11          | 0.x ±0.3                          | size A2          |
| Eng                                   | P LEGARE | 2005-10-11          | 0.xx ±0.1                         | Scale 2:1        |
| Chr                                   |          |                     | 0.xxx ±0.05                       | ECN F09-0076     |
| Appr                                  |          |                     | Product family                    | - Spec ref       |
| title<br>SUB MALE DW                  |          |                     | dwg no<br>C01-8639-2315           | Rev.<br>E        |
| full power without contact            |          |                     | CUSTOMER                          | sheet 1 of 4     |
| catalog no                            |          |                     |                                   |                  |

Copyright FCI. FCI



|                 |               |                                  |                         |
|-----------------|---------------|----------------------------------|-------------------------|
| FRONT ACCESSORY | Blank without | L insert M3<br>O insert UNC 4.40 | V Female screw UNC 4-40 |
| PCB ACCESSORIES | A without     | A without                        | A without               |

| PART NUMBER   | FRONT ACCESSORY       | PCB ACCESSORY |
|---------------|-----------------------|---------------|
| D*xW xPA00LF  | WITHOUT               | WITHOUT       |
| D*VxW xPA00LF | Female screw UNC 4-40 | WITHOUT       |
| D*LxW xPA00LF | Insert M3             | WITHOUT       |
| D*OxW xPA00LF | Insert UNC 4-40       | WITHOUT       |

|            |         |
|------------|---------|
| shell size | LAYOUTS |
| *          | xW x    |
| E          | 2V2     |
| A          | 3V3     |
| A          | 3W3     |
| B          | 5W5     |
| C          | 8W8     |

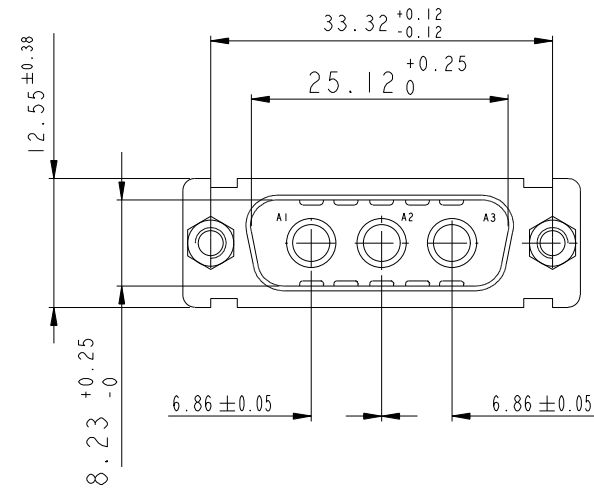
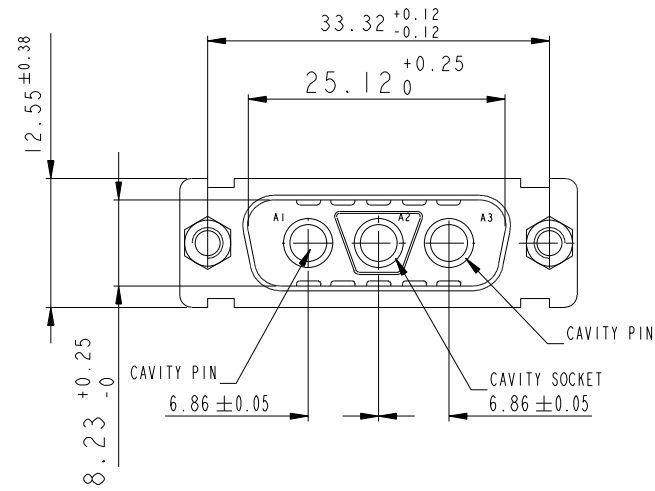
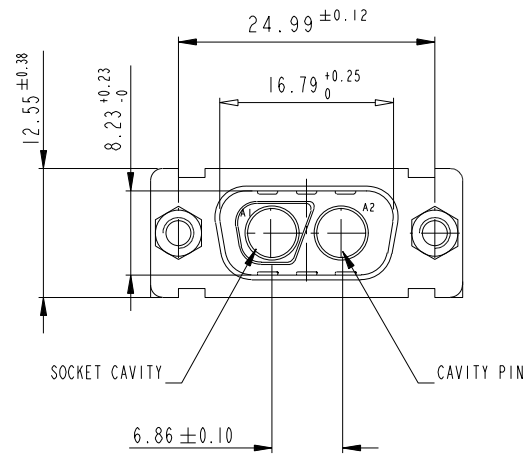
Copyright FCI. FCI

|                                       |          |                            |                                   |                  |
|---------------------------------------|----------|----------------------------|-----------------------------------|------------------|
| www.fciconnect.com                    |          | surface<br>ISO 1302        | tolerance std<br>ISO 406 ISO 1101 | projection<br>mm |
| TOLERANCES UNLESS OTHERWISE SPECIFIED |          |                            |                                   |                  |
| Dr                                    | M PESSON | 2005-10-11                 | 0.x ±0.3                          | size A2          |
| Eng                                   | P LEGARE | 2005-10-11                 | 0.xx ±0.1                         | Scale 2:1        |
| Chr                                   |          |                            | 0.xxx ±0.05                       | ECN F09-0076     |
| Appr                                  |          |                            | Product family                    | Spec ref         |
| FCI                                   |          | title SUB MALE DW          |                                   | Rev. E           |
|                                       |          | full power without contact |                                   |                  |
| catalog no                            |          | C01-8639-2315              |                                   | sheet 2 of 4     |
|                                       |          | CUSTOMER                   |                                   |                  |

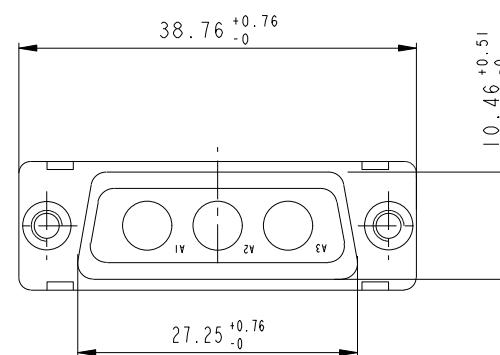
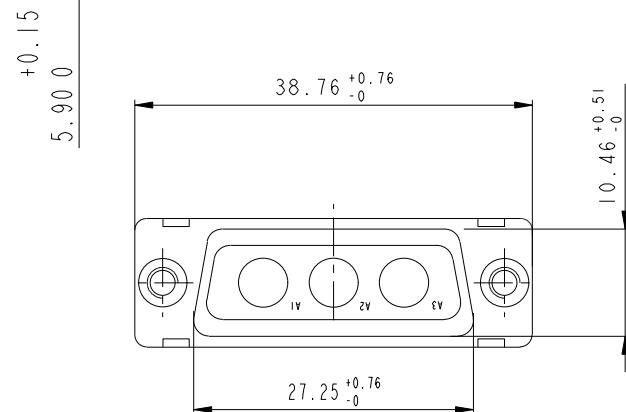
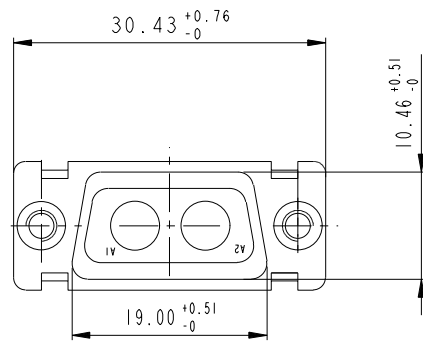
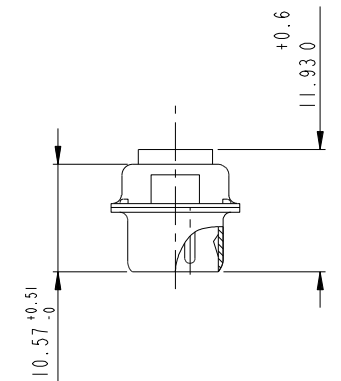
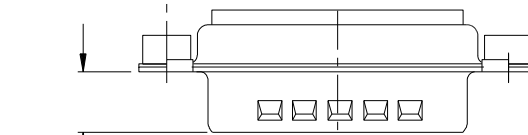
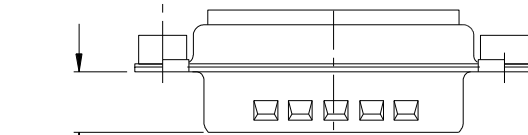
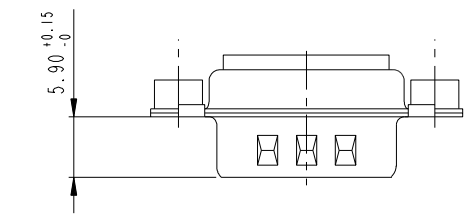
2V2

3V3

3W3



SIDE VIEW FOR LAYOUTS: E A B C

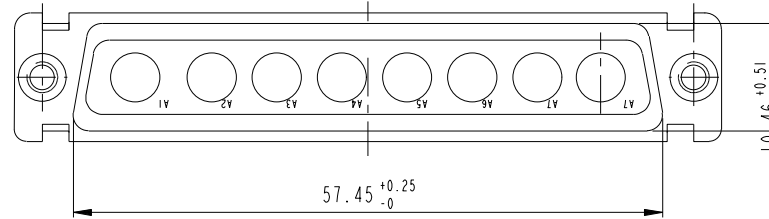
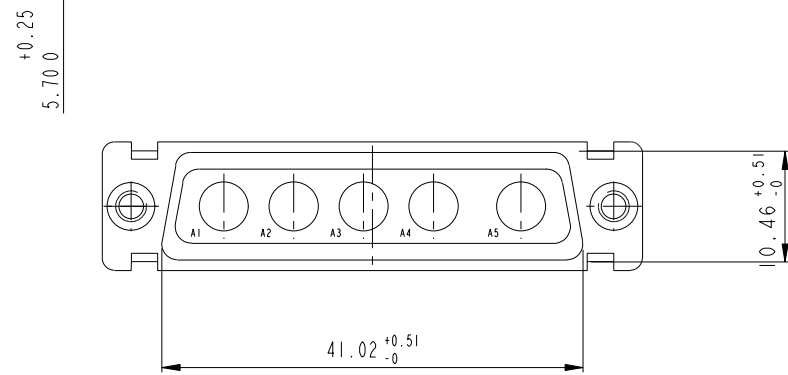
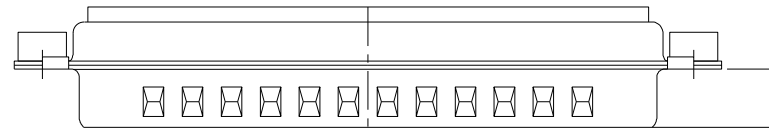
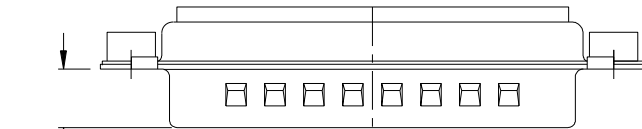
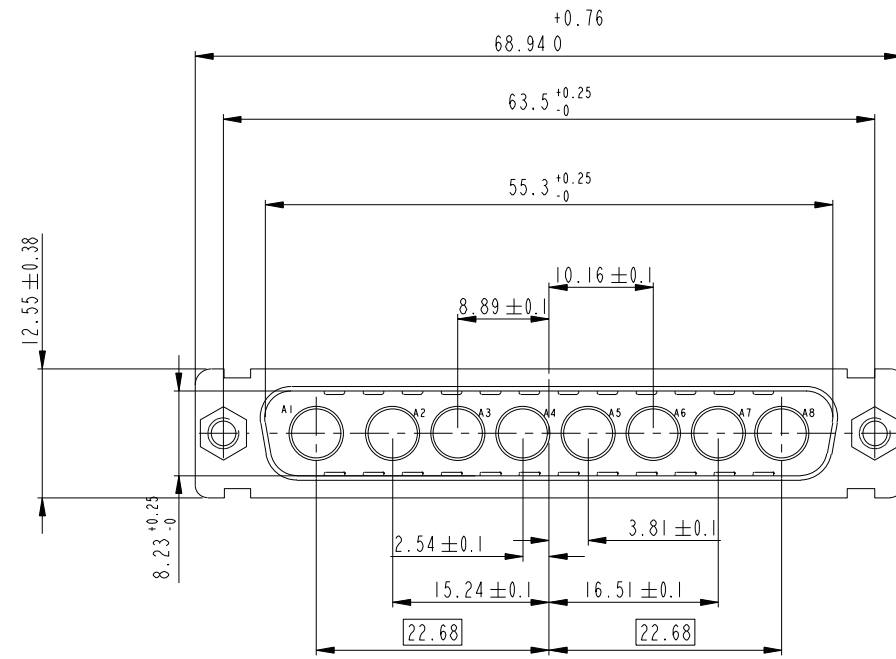
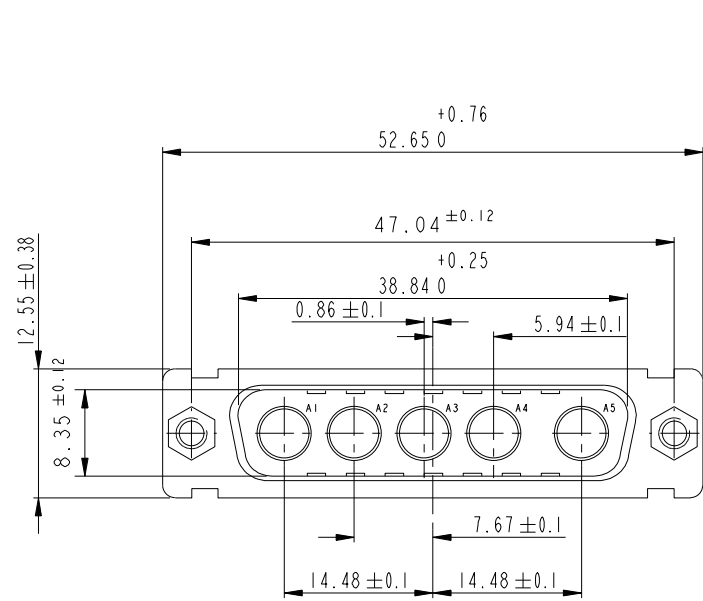


Copyright FCI. FCI

|                                       |            |                            |                                   |                  |
|---------------------------------------|------------|----------------------------|-----------------------------------|------------------|
| www.fciconnect.com                    |            | surface<br>ISO 1302        | tolerance std<br>ISO 406 ISO 1101 | projection<br>mm |
| TOLERANCES UNLESS OTHERWISE SPECIFIED |            | 0.x ±0.3                   | size<br>A2                        | Scale<br>2:1     |
| Dr M PESSON                           | 2005-10-11 | ANGULAR                    | 0.xx ±0.1                         | ECN F09-0076     |
| Eng P LEGARE                          | 2005-10-11 | LINEAR                     | 0.xxx ±0.05                       |                  |
| Chr                                   |            | 0° ±2°                     |                                   |                  |
| Appr                                  |            | Product family             | - Spec ref                        |                  |
| FCI                                   |            | title<br>SUB MALE DW       |                                   | Rev.<br>E        |
|                                       |            | full power without contact |                                   |                  |
| catalog no                            |            | dwg no                     | C01-8639-2315                     | sheet 3 of 4     |
|                                       |            | CUSTOMER                   |                                   |                  |

5W5

8W8



Copyright FCI. FCI

|                                       |          |                            |                                   |                       |
|---------------------------------------|----------|----------------------------|-----------------------------------|-----------------------|
| www.fciconnect.com                    |          | surface<br>ISO 1302        | tolerance std<br>ISO 406 ISO 1101 | projection<br>mm      |
| TOLERANCES UNLESS OTHERWISE SPECIFIED |          |                            |                                   |                       |
| Dr                                    | M PESSON | 2005-10-11                 | ANGULAR                           | size A2               |
| Eng                                   | P LEGARE | 2005-10-11                 | LINEAR                            | Scale 2:1             |
| Chr                                   |          |                            | 0° ±2°                            | ECN F09-0076          |
| Appr                                  |          |                            | Product family                    | Spec ref              |
| FCI                                   |          | Title SUB MALE DW          |                                   | Rev. E                |
|                                       |          | full power without contact |                                   | dwg no C01-8639-2315  |
|                                       |          | catalog no                 |                                   | CUSTOMER sheet 4 of 4 |