

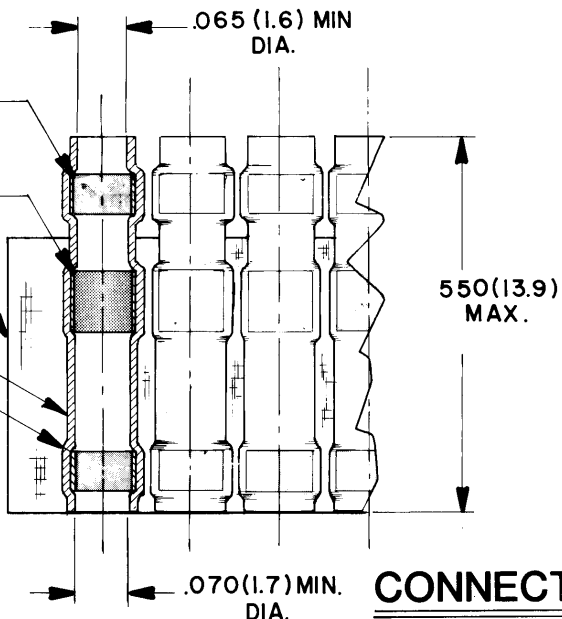
MELTABLE INSERT
(WIRE END BLUE)

SOLDER PREFORM
(WITH FLUX)

CARRIER STRIP

INSULATION SLEEVE

MELTABLE INSERT
(WAFER CONNECTOR END YELLOW)



NOTES:

1. MATERIALS

- I-A INSULATION SLEEVE; HEAT SHRINKABLE, RADIATION CROSSLINKED MODIFIED POLYVINYLIDENE FLUORIDE, TRANSPARENT BLUE.
- I-B SOLDER PREFORM; SOLDER PREFORM WITH FLUX TYPE: Sn63 RMAP PER QQ-S-571.
- I-C MELTABLE INSERTS; LOW OUTGASSING IMMERSION RESISTANT THERMOPLASTIC.
- I-D CARRIER STRIP; ADHESIVE COATED HIGH TEMPERATURE TAPE.

2. A CTA-0035 ASSEMBLY CONSISTS OF 10 EACH CTA-0034 SOLDER SLEEVE WIRE TERMINATORS.

3. THESE SLEEVES ARE DESIGNED TO ATTACH TO "20 THROUGH "26 GAGE TIN PLATED OR SILVER PLATED CONDUCTORS TO TERMINALS OF A **Raychem** MTC100 SERIES WAFER.

CONNECTOR SPECIFICATION CONTROL DRAWING

REVISIONS				
ZONE	LTR	DESCRIPTION	DATE	APPROVED
	N/C	INITIAL RELEASE DCO# 00805	10/26/79	BY JB

UNLESS OTHERWISE SPECIFIED DIMENSIONS ARE IN INCHES BRACKETED DIMENSIONS () ARE METRIC AND TOLERANCES ARE: .xxx: ± _____ () .xx: ± _____ () Δ: ± _____	DRAWN	SA. LOPEZ	5/19/79	<div style="text-align: center;">Raychem</div> <small>RAYCHEM CORPORATION 300 CONSTITUTION DRIVE MENLO PARK, CALIFORNIA 94025</small>
	CHECKED	JB	9-13-79	
	APPROVED	<i>Blair</i>	9-13-79	
	APPROVED	<i>BY JB</i>	10/24/79	
				TITLE SOLDER PAK ASSEMBLY DOUBLE SEAL, 100 CENTERS - 10 SLEEVES TEMP RATING 125 °C(Sn63)MTC100 SERIES
				SIZE B CODE IDENT NO. 06090 DWG. NO. CTA-0035
	PROJECT	6448 - 7055		WEIGHT SHEET 1 OF 1

CTA-0035 REV 1.00 10/26/79

If this document is printed it becomes uncontrolled.
Check with the web for latest revision.

DO NOT SCALE THIS DRAWING