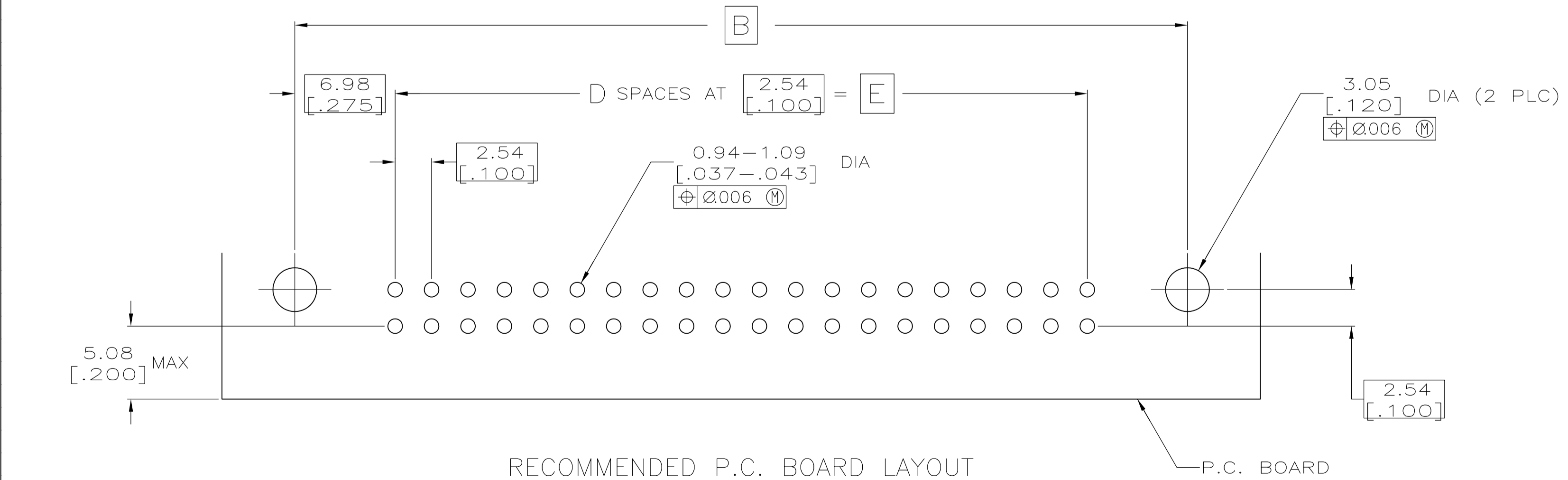
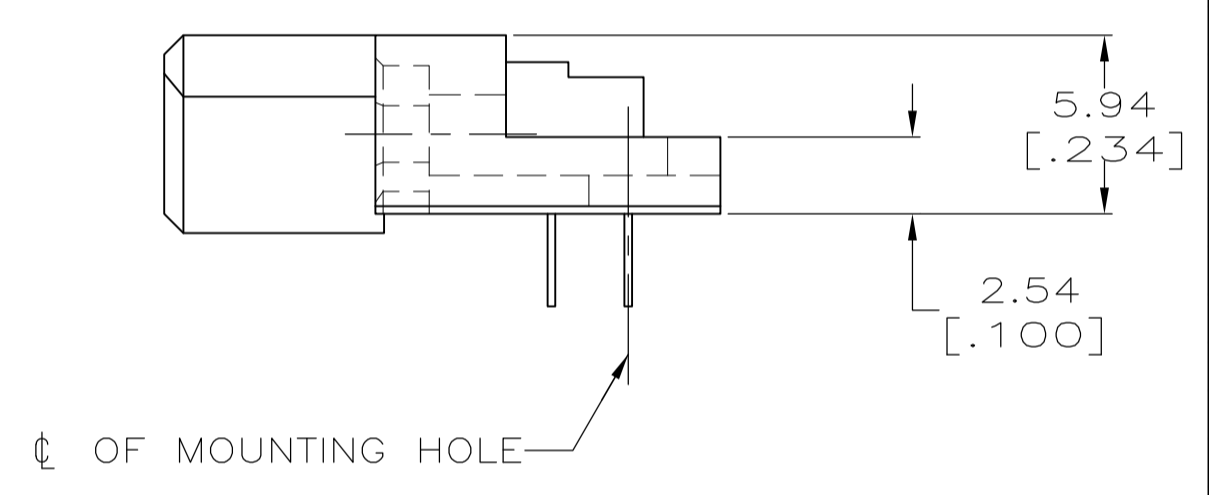
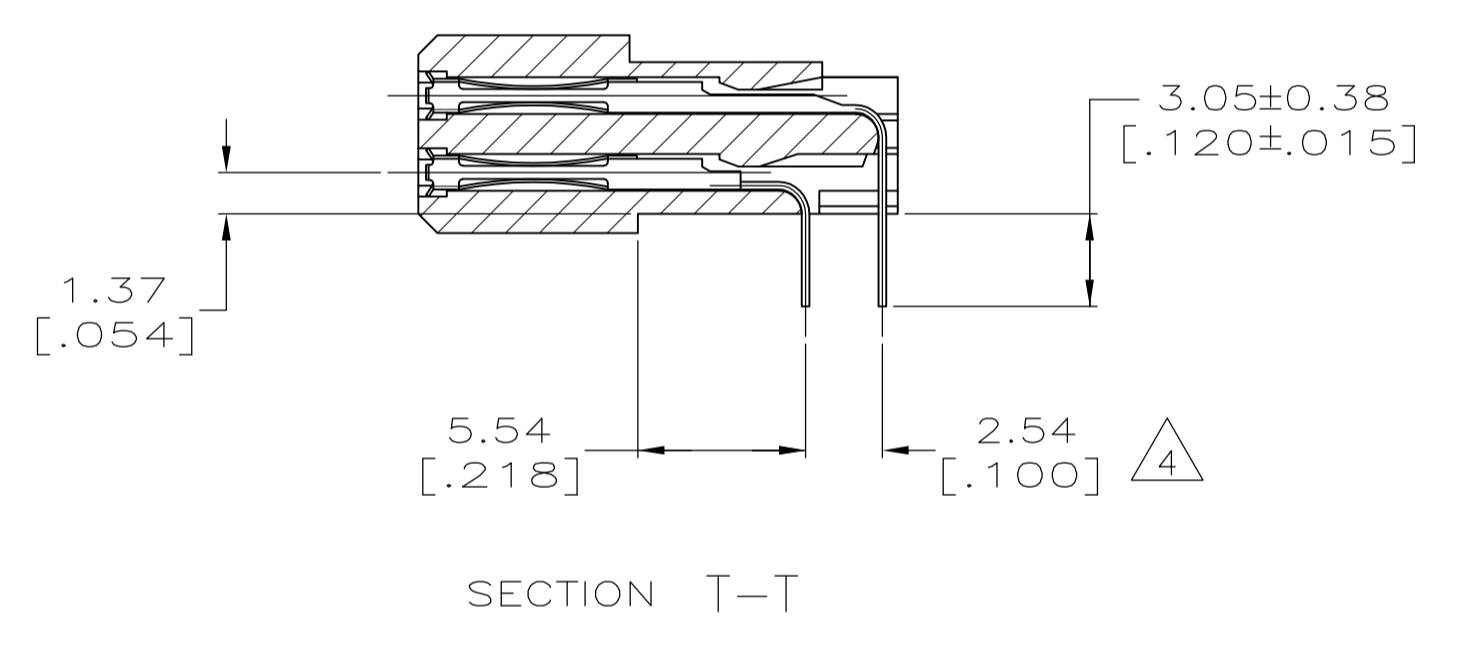
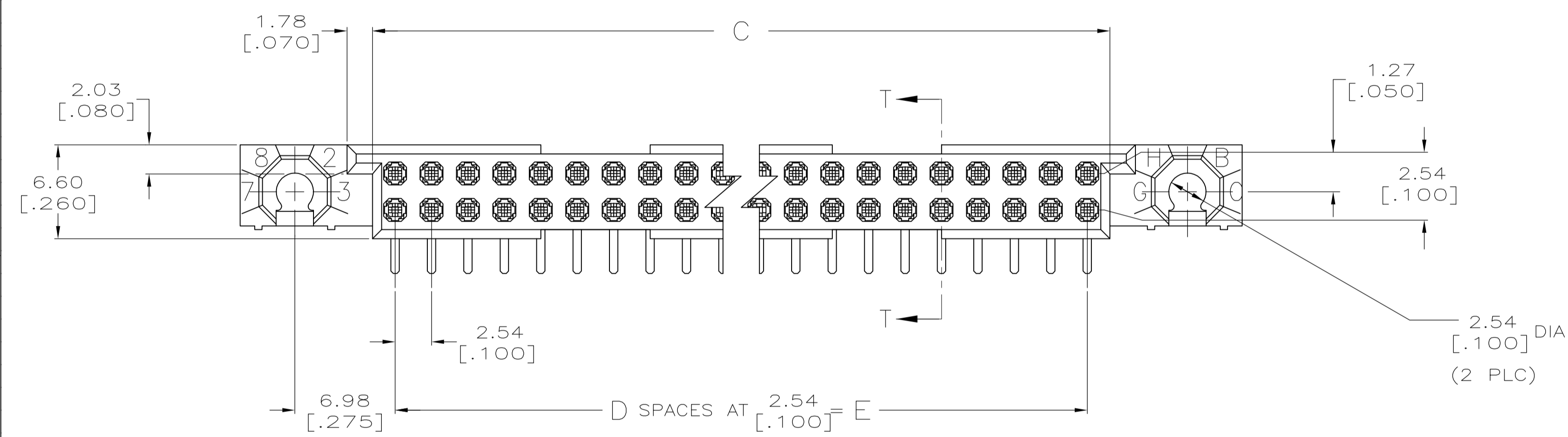
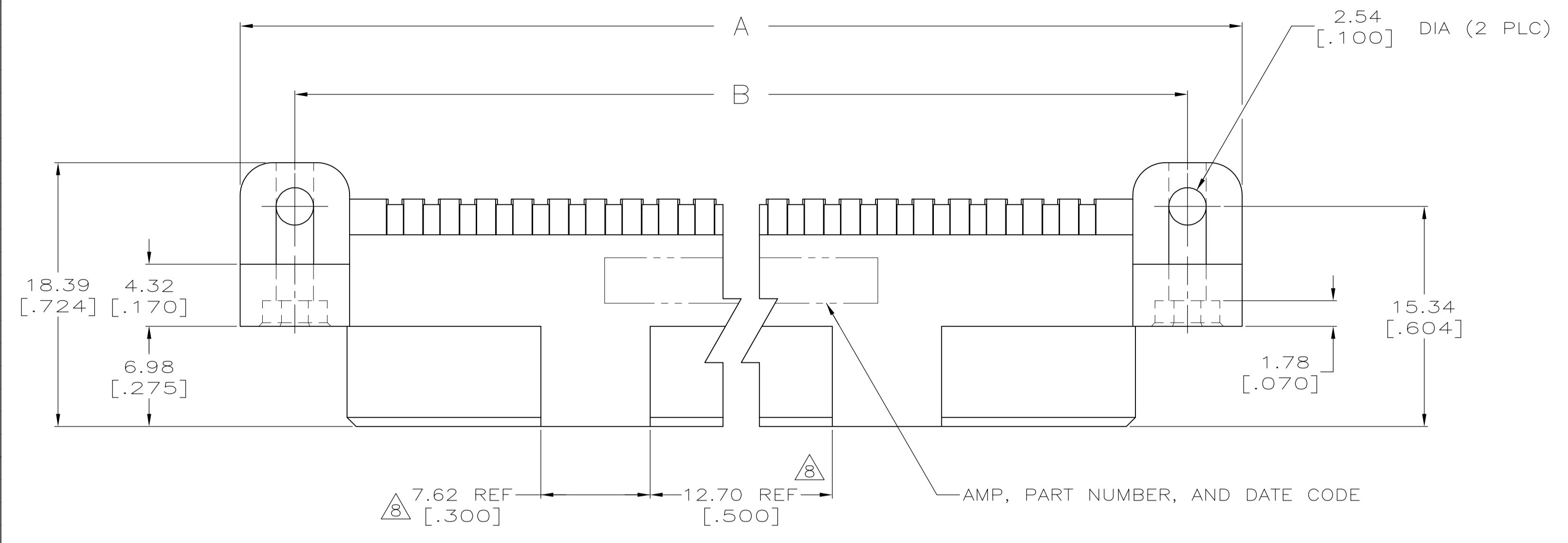


| REVISIONS | | | | | |
|-----------|-----|---------------------------|-----------|-----|------|
| P | LTR | DESCRIPTION | DATE | DMN | APVD |
| S | | REVISED PER ECO-16-009924 | 11JUL2016 | DS | SY |



| | | | | | |
|--|--|----------------------------|--|------------------------------|--|
| THIS DRAWING IS A CONTROLLED DOCUMENT. | | DIN R.K. SEIFRIED 06/18/90 | | STE TE Connectivity | |
| DIMENSIONS: mm [INCHES] | | CHK J.D.WEARY 02/20/92 | | NAME | |
| TOLERANCES UNLESS OTHERWISE SPECIFIED: | | APVD | | PRODUCT SPEC | |
| 0 PLC ± - | | - | | APPLICATION SPEC | |
| 1 PLC ± - | | - | | SIZE | |
| 2 PLC ± - | | - | | CAGE CODE | |
| 3 PLC ± 0.13 [.005] | | - | | DRAWING NO | |
| 4 PLC ± - | | - | | RESTRICTED TO | |
| ANGLES ± - | | - | | WEIGHT | |
| MATERIAL | | FINISH | | CUSTOMER DRAWING | |
| 1 2 | | 3 | | SCALE 4:1 SHEET 1 OF 2 REV S | |

| REVISIONS | | | | |
|-----------|-----|-------------|------|------|
| P | LTR | DESCRIPTION | DATE | APPV |
| - | | SEE SHEET 1 | - | - |

- ① HOUSING MATERIAL: THERMOPLASTIC, COLOR-NATURAL.
- ② CONTACT MATERIAL: COPPER ALLOY.
- ③ FINISH:
MATING AREA: MEETS THE PERFORMANCE REQUIREMENTS OF PRODUCT SPECIFICATION 108-9063; BASED ON TELCORDIA DR-1217-CORE APPLICATIONS IN UNCONTROLLED ENVIRONMENTS.
SOLDER TAILS AREA: TIN-LEAD PLATED.
- ④ SOLDER TAILS MUST FIT HOLE PATTERN AS SHOWN ON THE RECOMMENDED P.C. BOARD LAYOUT.
- 5. DIMENSIONS IN BRACKETS ARE IN INCHES.
- ⑥ HOUSINGS WITH CENTER MOUNTING IS RECOMMENDED FOR ASSEMBLIES HAVING 75 CONTACTS PER ROW OR MORE.
- ⑦ PART NUMBER IS OBSOLETE.
- ⑧ QUANTITIES OF VOID CORING ARE DEPENDENT ON THE POSITION SIZE OF THE HOUSING.
- ⑨ OBSOLETE PARTS: OBSOLETE CIS STREAMLINING PER D.RENAUD/D.SINISI
- ⑩ FINISH:
CONTACT FINISH: .00127-.00254 [.000050-.000100] NICKEL UNDERPLATE ALL OVER; .000762 [.000030] GOLD PLATE IN CONTACT AREA, TIN-LEAD PLATED POSTS.

| ⑩ | 187.96 [7.400] | 74 | 191.11 [7.524] | 201.93 [7.950] | 209.55 [8.250] | 150 | 4-532825-4 |
|------------|-------------------|----|-------------------|-------------------|--------------------|------|---------------------|
| ⑥⑦ | — | — | — | — | — | — | 2-532825-0 |
| ⑥⑦ | — | — | — | — | — | — | 1-532825-9 |
| ⑥ | 238.76 [9.400] | 94 | 241.91 [9.524] | 252.73 [9.950] | 260.35 [10.250] | 190 | 1-532825-8 |
| ⑥⑦ | — | — | — | — | — | — | 1-532825-7 |
| ⑥⑦ | — | — | — | — | — | — | 1-532825-6 |
| ⑥⑦ | 200.66 [7.900] | 79 | 203.81 [8.024] | 214.63 [8.450] | 222.25 [8.750] | 160 | 1-532825-5 |
| | 187.96 [7.400] | 74 | 191.11 [7.524] | 201.93 [7.950] | 209.55 [8.250] | 150 | 1-532825-4 |
| ⑦ | 175.26 [6.900] | 69 | 178.41 [7.024] | 189.23 [7.450] | 196.85 [7.750] | 140 | 1-532825-3 |
| ⑦ | — | — | — | — | — | — | 1-532825-2 |
| ⑦ | 149.86 [5.900] | 59 | 153.01 [6.024] | 163.83 [6.450] | 171.45 [6.750] | 120 | 1-532825-1 |
| ⑦ | — | — | — | — | — | — | 1-532825-0 |
| ⑨ OBSOLETE | 124.46 [4.900] | 49 | 127.61 [5.024] | 138.43 [5.450] | 146.05 [5.750] | 100 | 532825-9 |
| ⑦ | 111.76 [4.400] | 44 | 114.91 [4.524] | 125.73 [4.950] | 133.35 [5.250] | 90 | 532825-8 |
| ⑦ | 99.06 [3.900] | 39 | 102.21 [4.024] | 113.03 [4.450] | 120.65 [4.750] | 80 | 532825-7 |
| ⑦ | 86.36 [3.400] | 34 | 89.51 [3.524] | 100.33 [3.950] | 107.95 [4.250] | 70 | 532825-6 |
| ⑦ | 73.66 [2.900] | 29 | 76.81 [3.024] | 87.63 [3.450] | 95.25 [3.750] | 60 | 532825-5 |
| ⑦ | 60.96 [2.400] | 24 | 64.11 [2.524] | 74.93 [2.950] | 82.55 [3.250] | 50 | 532825-4 |
| ⑨ OBSOLETE | 48.26 [1.900] | 19 | 51.41 [2.024] | 62.23 [2.450] | 69.85 [2.750] | 40 | 532825-3 |
| ⑦ | 35.56 [1.400] | 14 | 38.71 [1.524] | 49.53 [1.950] | 57.15 [2.250] | 30 | 532825-2 |
| ⑦ | 22.86 [.900] | 9 | 26.01 [1.024] | 36.83 [1.450] | 44.45 [1.750] | 20 | 532825-1 |
| | E | D | C | B | A | POSN | PART NUMBER |

THIS DRAWING IS A CONTROLLED DOCUMENT.

| | | | |
|----------------------------|--|--|--|
| DIMENSIONS: mm [INCHES] | TOLERANCES UNLESS OTHERWISE SPECIFIED: 0. PLC ± - 1. PLC ± - 2. PLC ± - 3. PLC ± 0.13 [.005] 4. PLC ± - ANGLES ± - | APPROVED: R.K. SEIFRIED 06/18/90 J.D. WEARY 02/20/92 | NAME: HDI, 2 ROW, RECEPTACLE ASSEMBLY, 3.05 [.120] LONG SOLDER TAILS |
| MATERIAL | FINISH | WEIGHT: 0 | SIZE: A1 |
| CUSTOMER DRAWING | | SCALE: 4:1 | SHEET 2 OF 2 |

STE TE Connectivity

RESTRICTED TO