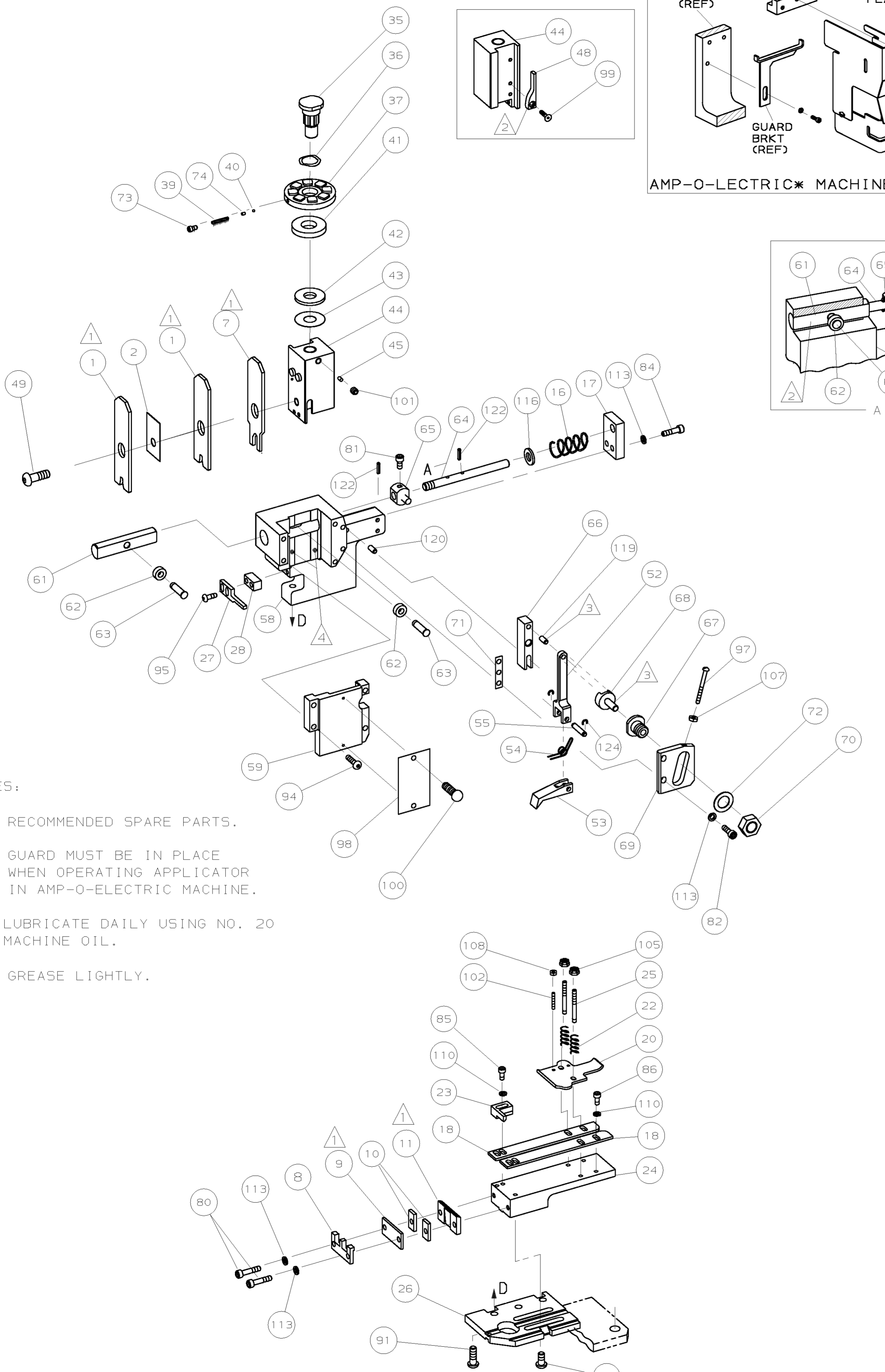
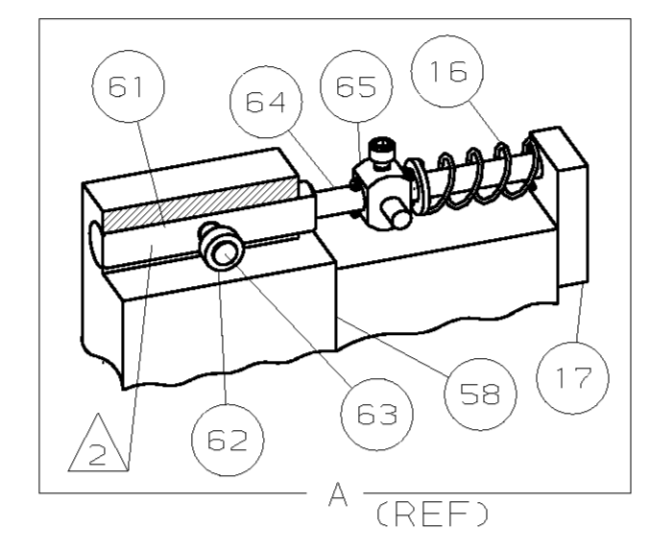
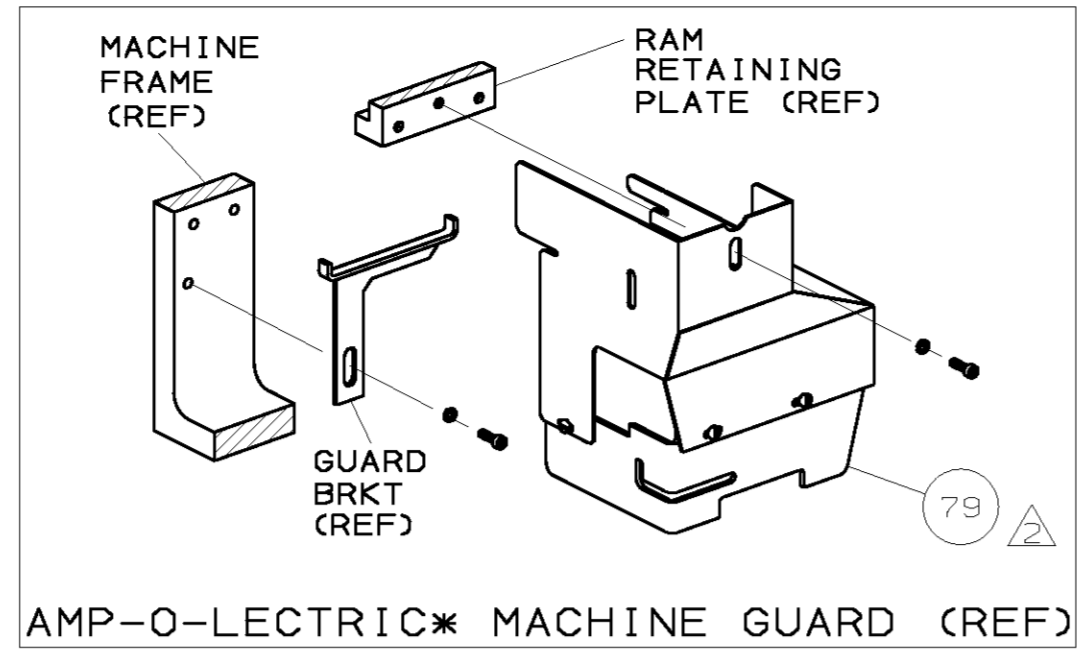


THIS DRAWING IS A CONTROLLED DOCUMENT.

### POST-FEED 1 5/8 STROKE



- NOTES:
- 1 RECOMMENDED SPARE PARTS.
  - 2 GUARD MUST BE IN PLACE WHEN OPERATING APPLICATOR IN AMP-O-ELECTRIC MACHINE.
  - 3 LUBRICATE DAILY USING NO. 20 MACHINE OIL.
  - 4 GREASE LIGHTLY.

THIS DRAWING IS UNRELEASABLE - RELEASED FOR PUBLICATION RIGHTS RESERVED 2002

AMP 1756 REV 3-87 03-MAR-05 07:16:12 us014442

QTY	PART NO	DESCRIPTION	ITEM NO
2	21045-3	RING,RETAINING "C" (.187Ø)FEED PIN	124
1	1-21030-7	PIN,DOWEL (.187Øx1.50)HOUSING	121
1	1-21030-1	PIN,DOWEL (.187Øx.50)LEVER	119
1	21899-4	WASHER,FLAT (5/16Ø)SCR ADJ	116
6	21024-5	WASHER,LOCK (NO.10)SHEAR PLATES	113
5	21024-4	WASHER,LOCK (NO.8)SHEAR BLADE	110
2	21018-4	NUT,HEX MACH(4-40)DRAG	108
1	21018-5	NUT,HEX MACH(6-32)FEED ADJ PLATE	107
2	21022-2	NUT,HEX SELF-LOCK (8-32)DRAG STUD	105
2	4-21078-5	SCR,SKT SET OVAL PT (4-40x.75)DRAG	102
1	21009-2	SCR,SKT SET (1/4-20x.25 LOC-WEL)RAM	101
2	21017-2	SCR,DRIVE (#2x.19)IDENT PLATE	100
1	1-21002-7	SCR,BHC (6-32x.38)CAM	99
1	461264-1	PLATE, IDENTIFICATION	98
1	6-23715-5	SCR,PAN HD MACH(6-32x1.50)FEED ADJ	97
2	9-21002-6	SCR,BHC (8-32x.88)STRIPPER	95
4	2-21002-9	SCR,BHC (10-32x.75)HSG CAP	94
-	22733-8	SCR,BHC (8-32x.38 LOC-WEL)ANVIL	93
4	3-21002-3	SCR,BHC (1/4-20x.50)STR GDE PL	92
3	2-22733-8	SCR,BHC (1/4-20x.62)BASE PLATE	91
3	7-21000-4	SCR,SKT CAP (8-32x.31)STRIP GUIDE	86
2	2-21000-8	SCR,BHC (8-32x.62)R STRIP GUIDE REAR	85
2	3-21000-7	SCR,SKT CAP (10-32x.75)FD ROD GUIDE	84
2	3-21000-6	SCR,SKT CAP (10-32x.62)FD ADJ PL	83
1	3-21000-4	SCR,SKT CAP (10-32x.38)PIVOT BLOCK	81
2	3-21000-8	SCR,SKT CAP (10-32x.88)SHEAR PLATE	80
REF	455745-1	GUARD, WINDOW	79
1	690603-1	SPRING, ASSIST	76
1	23030-1	SCR,SKT CAP (6-32x.25)CP DISC	75
1	458109-1	WASHER, FLAT SPECIAL	74
1	690517-1	SPACER	73
1	22594-8	NUT, HEX	72
1	240628-1	PLATE, ADJ	71
1	240626-1	SHAFT, PIVOT	70
1	240633-1	BUSHING	69
1	455680-1	LEVER, INTERMEDIATE	68
1	240629-1	BLOCK, PIVOT	67
1	240632-2	SCREW, ADJ	66
1	240659-3	PIN, CAM ROLLER	65
1	240658-1	CAM, ROLLER	64
1	454398-1	ROD, FEED	63
1	454220-1	CAP, RAM	62
1	453736-1	HOUSING	61
1	240624-1	PIN, FEED FINGER	60
1	691499-1	SPRING, FEED FINGER	59
1	240635-1	FINGER, FEED	58
1	240634-1	LEVER, TERMINAL	57
1	7-21002-9	BOLT, CRIMPER (5/16-24x1.00)	56
1	690501-4	CAM, POST-FEED 1 5/8 STROKE	55
1	690191-1	PLUG, NYLON	54
1	1-455674-0	RAM	53
1	690125-1	WASHER, LAMINATED	52
1	1-690124-1	WASHER, RAM	51
1	690223-1	DISC, SPACER	50
1	23241-6	BALL, STEEL	49
1	690170-1	SPRING, COMPRESSION	48
1	9-692155-3	DISC, WIRE	47
1	22480-5	WASHER, SPRING	46
1	690212-1	POST, RAM	45
1	690451-3	SPACER, STRIPPER	44
1	240639-2	STRIPPER	43
1	459717-1	PLATE, BASE	42
2	22354-8	DRAG, STUD	41
1	455678-1	PLATE, STRIP GUIDE	40
1	240825-4	PLATE, STRIP HOLD	39
2	4-22281-1	SPRING, DRAG	38
1	454177-1	DRAG, STOCK	37
2	454204-4	GUIDE, STRIP (FRONT)	36
1	454178-1	GUIDE, FEED ROD	35
1	4-22284-9	SPRING, FEED RETURN	34
1	240644-1	PLATE, REAR SHEAR	33
2	240645-5	SPACER, SHEAR PLATE	32
1	690619-6	PLATE, ANVIL SUPPORT	31
1	3-690618-6	ANVIL	30
1	459722-1	BLADE, SLUG	29
1	455888-9	SPACER, CRIMPER	28
2	2-459736-8	CRIMPER, WIRE	27

REMARKS	NO	REV
APPL USED ON MACHINE PART NO	MACH SERIAL NO	DISTRIBUTION
CUSTOMER NAME	APPL SERIAL NO	ORIGINAL
ADDRESS	PURCHASE ORDER	CUSTOMER COPY
CITY	ENG APP	FIELD ENG COPY

CRIMPING DATA				APPLICATOR WILL APPLY	
PAD LTR	CRIMP HEIGHT	SET-UP WIRE AND CMA RANGE		41974	
A	.070	(2)18 2600-3200 CMA		41975	
B	.067	16 2100-2700 CMA		60903	
C	.064	(2)20 1600-2200 CMA			
D	.061	18 1000-1700 CMA			
CRIMP	SIZE	TYPE	FEED	APPL INST	
WIRE	.110	F	.440	A1 8039	
INSUL	-	-			
WIRE RANGE	1000-3200 CMA	INSULATION RANGE	-	MACHINE NO	-

AMPOMATOR  
POST-FEED  
( FEED 2 AT A TIME )

SET UP GAGE 458638-1 10-1 L1353  
DR 10/18/89 APP -  
P.MATHIAS -

AMP INCORPORATED  
Harrisburg, Pa.

CHK - REL - LOC A D NO 567346-1 REV B1

NAME MINIATURE QUICK CHANGE APPLICATOR  
END FEED ( SPLICE )

CASE CODE 00779 CUSTOMER AND ASSEMBLY DRAWING