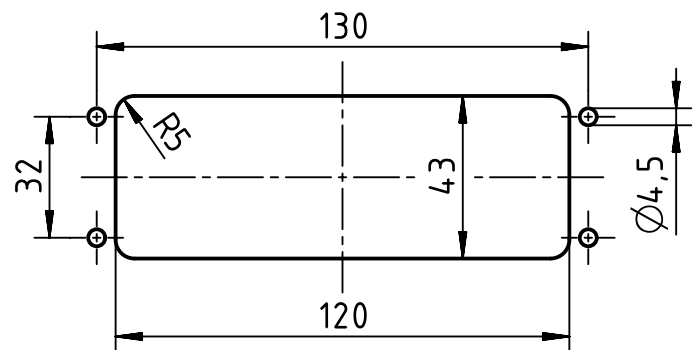



panel cut out (1:2)



	All rights reserved		Created by WENE		Inspected by LUOK		Standardisation RUETERA		Date 2020-07-13		State Final Release	
	Department EL PD		Title Han 24M HBM-Rear Fit-SL		Doc-Key / ECM-Nr. 100869954/UGD/002/B 500000176243		Type TB		Number 09 37 024 0397		Rev. B	
HARTING Electric GmbH & Co. KG D-32339 Espelkamp			All Dimensions in mm Original Size DIN A4		Scale 1:1 Free size tol.		Ref. Sub.		Rev. B		Page 1/1	