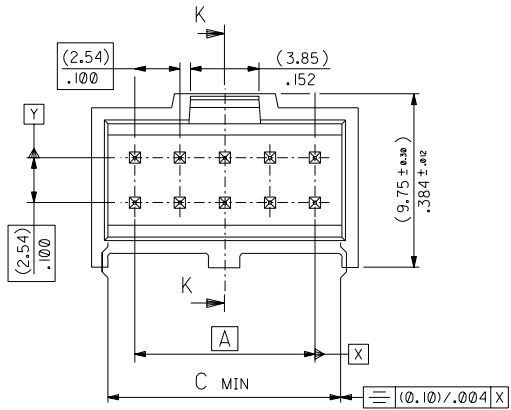
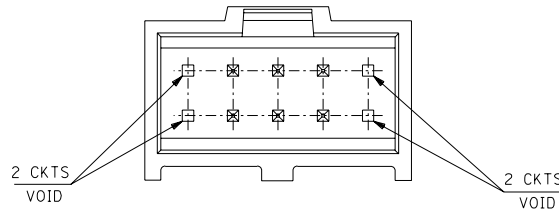


VERSION FULLY LOADED



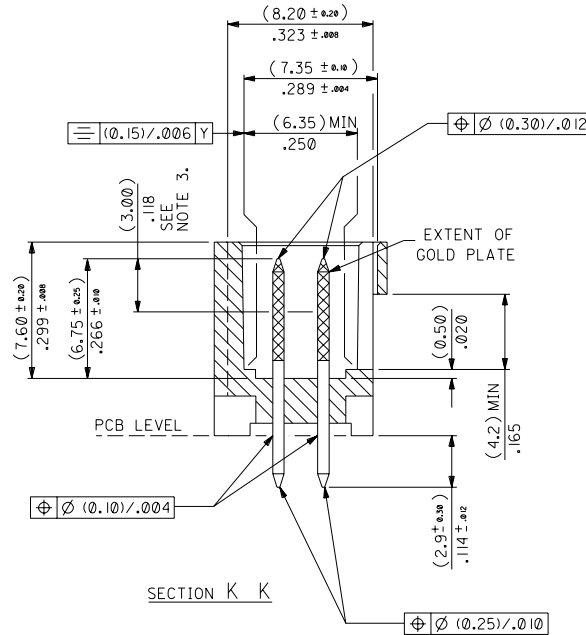
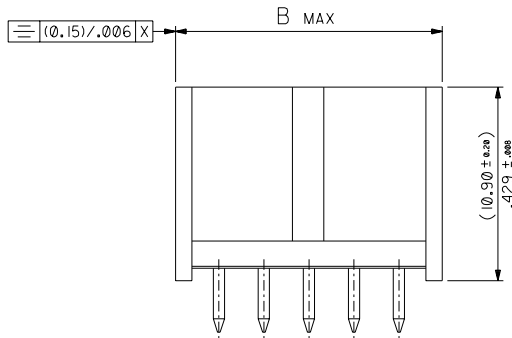
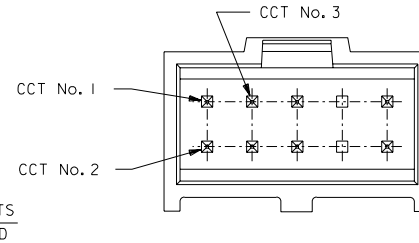
STANDARD VERSION WITH VOIDS

(WHERE VOID POSITIONS ARE NOT SPECIFIED WITH A PART OPTION)

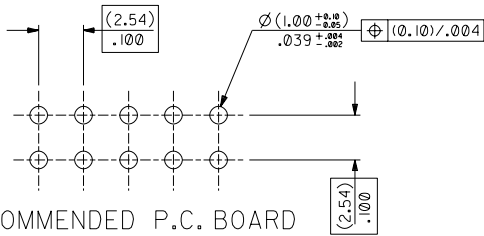


NON-STANDARD VERSION WITH VOIDS

(WHERE VOID POSITIONS ARE SPECIFIED WITH A PART OPTION)



| HSG CKT SIZE | A | B | C |
|--------------------|---------------|---------------|---------------|
| 6 | (5.08) .200 | (10.34) .407 | (7.92) .312 |
| 8 | (7.62) .300 | (12.88) .507 | (10.46) .412 |
| 10 | (10.16) .400 | (15.42) .607 | (13.00) .512 |
| 12 | (12.70) .500 | (17.96) .707 | (15.54) .612 |
| 14 | (15.24) .600 | (20.50) .807 | (18.08) .712 |
| 16 | (17.78) .700 | (23.04) .907 | (20.62) .812 |
| 18 | (20.32) .800 | (25.58) 1.007 | (23.16) .912 |
| 20 | (22.86) .900 | (28.12) 1.107 | (25.70) 1.012 |
| 22 | (25.40) 1.000 | (30.66) 1.207 | (28.24) 1.112 |
| 24 | (27.94) 1.100 | (33.20) 1.307 | (30.78) 1.212 |
| 26 | (30.48) 1.200 | (35.74) 1.407 | (33.32) 1.312 |
| 28 | | | |
| 30 | (35.56) 1.400 | (40.82) 1.607 | (38.40) 1.512 |
| 32 | (38.10) 1.500 | (43.36) 1.707 | (40.94) 1.612 |
| 34 | (40.64) 1.600 | (45.90) 1.807 | (43.48) 1.712 |
| 36 | | | |
| 38 | (45.72) 1.800 | (50.98) 2.007 | (48.56) 1.912 |
| 40 | (48.26) 1.900 | (53.52) 2.107 | (51.10) 2.012 |
| 42 | | | |
| 44 | (53.34) 2.100 | (58.60) 2.307 | (56.18) 2.212 |
| 46 | | | |
| 48 | | | |
| 50 | (60.96) 2.400 | (66.22) 2.607 | (63.80) 2.512 |
| 52 | | | |
| 54 | (66.04) 2.600 | (71.30) 2.807 | (68.88) 2.712 |
| 56 | | | |
| 58 | (73.66) 2.900 | (78.92) 3.107 | (76.50) 3.012 |
| 62 | | | |
| 64 | (78.74) 3.100 | (84.00) 3.307 | (81.58) 3.212 |
| 66 | | | |
| 68 | (83.82) 3.300 | (89.08) 3.507 | (86.66) 3.412 |



NOTES

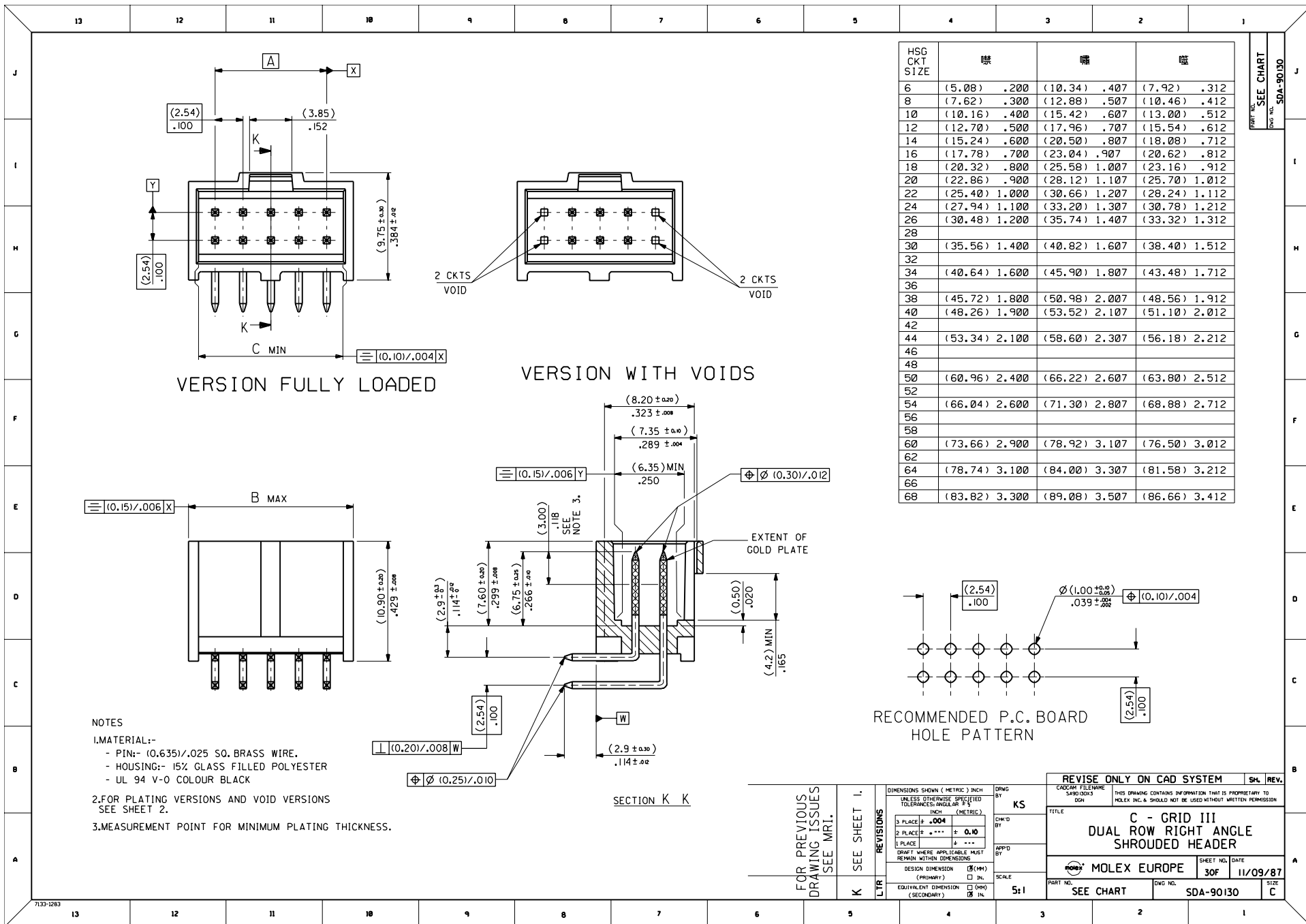
- MATERIAL:-
 - PIN:- (0.635) ± .025 SQ. BRASS WIRE.
 - HOUSING:- 15% GLASS FILLED POLYESTER
 - UL 94 V-0 COLOUR BLACK OR NATURAL
- FOR PLATING VERSIONS AND VOID VERSIONS SEE SHEET 2.
- MEASUREMENT POINT FOR MINIMUM PLATING THICKNESS.

RECOMMENDED P.C. BOARD
HOLE PATTERN

| | | | | | | | | |
|--------------------------------------|---|-------------------|---|---------------|--|-----------------------------------|---|--|
| FOR PREVIOUS DRAWING ISSUES SEE MRI. | UPDATE VERSIONS E2004-0428 05/11/2003 | REVISIONS | DIMENSIONS SHOWN (METRIC) INCH UNLESS OTHERWISE SPECIFIED TOLERANCES ANGULAR ± ° INCH (METRIC) | DRWG BY KS | REVISE ONLY ON CAD SYSTEM CADDM FILE NAME S4901301.DGN | | THIS DRAWING CONTAINS INFORMATION THAT IS PROPRIETARY TO MOLEX INC. & SHOULD NOT BE USED WITHOUT WRITTEN PERMISSION | |
| | DESIGN DIMENSION (MM) | (PRIMARY) □ IN. | 3 PLACE # ± .004 | CHK'D BY | TITLE C - GRID III DUAL ROW STRAIGHT SHROUDED HEADER | | | |
| | EQUIVALENT DIMENSION (SECONDARY) □ (MM) | (SECONDARY) □ IN. | 2 PLACE # ± .010 | APP'D BY | SCALE 5:1 | | | |
| | MATERIAL | | | MOLEX | | SHEET NO. DATE 1 OF 5 23/08/88 | | PART NO. DWG NO. SIZE SEE CHART SDA-90130 C |

PART NO. SEE CHART
DWG NO. SDA-90130

| | |
|---|----------|
| 5 | N |
| 4 | Q |
| 3 | K |
| 2 | M |
| 1 | S |
| | SH. REV. |



NOTES
 1. MATERIAL:-
 - PIN:- (0.635)/.025 SO. BRASS WIRE.
 - HOUSING:- 15% GLASS FILLED POLYESTER
 - UL 94 V-0 COLOUR BLACK
 2. FOR PLATING VERSIONS AND VOID VERSIONS
 SEE SHEET 2.
 3. MEASUREMENT POINT FOR MINIMUM PLATING THICKNESS.

| HSG CKT SIZE | 唵 | | 唵 | | 唵 | |
|--------------|---------|-------|---------|-------|---------|-------|
| 6 | (5.08) | .200 | (10.34) | .407 | (7.92) | .312 |
| 8 | (7.62) | .300 | (12.88) | .507 | (10.46) | .412 |
| 10 | (10.16) | .400 | (15.42) | .607 | (13.00) | .512 |
| 12 | (12.70) | .500 | (17.96) | .707 | (15.54) | .612 |
| 14 | (15.24) | .600 | (20.50) | .807 | (18.08) | .712 |
| 16 | (17.78) | .700 | (23.04) | .907 | (20.62) | .812 |
| 18 | (20.32) | .800 | (25.58) | 1.007 | (23.16) | .912 |
| 20 | (22.86) | .900 | (28.12) | 1.107 | (25.70) | 1.012 |
| 22 | (25.40) | 1.000 | (30.66) | 1.207 | (28.24) | 1.112 |
| 24 | (27.94) | 1.100 | (33.20) | 1.307 | (30.78) | 1.212 |
| 26 | (30.48) | 1.200 | (35.74) | 1.407 | (33.32) | 1.312 |
| 28 | | | | | | |
| 30 | (35.56) | 1.400 | (40.82) | 1.607 | (38.40) | 1.512 |
| 32 | | | | | | |
| 34 | (40.64) | 1.600 | (45.90) | 1.807 | (43.48) | 1.712 |
| 36 | | | | | | |
| 38 | (45.72) | 1.800 | (50.98) | 2.007 | (48.56) | 1.912 |
| 40 | (48.26) | 1.900 | (53.52) | 2.107 | (51.10) | 2.012 |
| 42 | | | | | | |
| 44 | (53.34) | 2.100 | (58.60) | 2.307 | (56.18) | 2.212 |
| 46 | | | | | | |
| 48 | | | | | | |
| 50 | (60.96) | 2.400 | (66.22) | 2.607 | (63.80) | 2.512 |
| 52 | | | | | | |
| 54 | (66.04) | 2.600 | (71.30) | 2.807 | (68.88) | 2.712 |
| 56 | | | | | | |
| 58 | | | | | | |
| 60 | (73.66) | 2.900 | (78.92) | 3.107 | (76.50) | 3.012 |
| 62 | | | | | | |
| 64 | (78.74) | 3.100 | (84.00) | 3.307 | (81.58) | 3.212 |
| 66 | | | | | | |
| 68 | (83.82) | 3.300 | (89.08) | 3.507 | (86.66) | 3.412 |

REF. NO. SEE CHART
 DWG. NO. SDA-90130

| | | | | | | | | |
|--------------------------------------|----------------|---------------|----------------------------------|-----|---|--|-----|------|
| FOR PREVIOUS DRAWING ISSUES SEE MRL. | K SEE SHEET 1. | LTR REVISIONS | DRWG BY | KS | REVISE ONLY ON CAD SYSTEM | | SHL | REV. |
| | | | DESIGNED BY | | CAGCAD FILE NAME | | | |
| | | | APPROD BY | | S490.DWG | | | |
| | | | SCALE | 5:1 | THIS DRAWING CONTAINS INFORMATION THAT IS PROPRIETARY TO MOLEX INC. & SHOULD NOT BE USED WITHOUT WRITTEN PERMISSION | | | |
| | | | TITLE | | C - GRID III | | | |
| | | | DESIGN DIMENSION (PRIMARY) | | DUAL ROW RIGHT ANGLE | | | |
| | | | EQUIVALENT DIMENSION (SECONDARY) | | SHROUDED HEADER | | | |
| | | | MATERIAL | | MOLEX EUROPE | | | |
| | | | PART NO. | | 30F | | | |
| | | | DWG. NO. | | SDA-90130 | | | |
| | | | DATE | | 11/09/87 | | | |
| | | | SIZE | | C | | | |

| NO OF CKTS | HSG CKT SIZE | PART NUMBER | | |
|------------|--------------|----------------|----------------|----------------|
| | | PLATING TYPE A | PLATING TYPE E | PLATING TYPE F |
| | | 6 | 6 | 90130-X106 |
| 8 | 8 | X108 | X208 | X308 |
| 10 | 10 | X110 | X210 | X310 |
| 12 | 12 | X112 | X212 | X312 |
| 14 | 14 | X114 | X214 | X314 |
| 16 | 16 | X116 | X216 | X316 |
| 18 | 18 | X118 | X218 | X318 |
| 20 | 20 | X120 | X220 | X320 |
| 22 | 22 | X122 | X222 | X322 |
| 24 | 24 | X124 | X224 | X324 |
| 26 | 26 | X126 | X226 | X326 |
| 28 | 28 | | | |
| 30 | 30 | X130 | X230 | X330 |
| 32 | 32 | | | |
| 34 | 34 | X134 | X234 | X334 |
| 36 | 36 | | | |
| 38 | 38 | X138 | X238 | X338 |
| 40 | 40 | X140 | X240 | X340 |
| 42 | 42 | | | |
| 44 | 44 | X144 | X244 | X344 |
| 46 | 46 | | | |
| 48 | 48 | | | |
| 50 | 50 | X150 | X250 | X350 |
| 52 | 52 | | | |
| 54 | 54 | X154 | X254 | X354 |
| 56 | 56 | | | |
| 58 | 58 | | | |
| 60 | 60 | X160 | X260 | X360 |
| 62 | 62 | | | |
| 64 | 64 | X164 | X264 | X364 |
| 66 | 66 | | | |
| 68 | 68 | 90130-X168 | 90130-X268 | 90130-X368 |

| NO OF CKTS | HSG CKT SIZE | PART NUMBER | | |
|------------|--------------|----------------|----------------|----------------|
| | | PLATING TYPE A | PLATING TYPE E | PLATING TYPE F |
| | | 2 | 6 | 90130-X106 |
| 4 | 8 | X108 | X208 | X308 |
| 6 | 10 | X110 | X210 | X310 |
| 8 | 12 | X112 | X212 | X312 |
| 10 | 14 | X114 | X214 | X314 |
| 12 | 16 | X116 | X216 | X316 |
| 14 | 18 | X118 | X218 | X318 |
| 16 | 20 | X120 | X220 | X320 |
| 18 | 22 | X122 | X222 | X322 |
| 20 | 24 | X124 | X224 | X324 |
| 22 | 26 | X126 | X226 | X326 |
| 24 | 28 | | | |
| 26 | 30 | X130 | X230 | X330 |
| 28 | 32 | | | |
| 30 | 34 | X134 | X234 | X334 |
| 32 | 36 | | | |
| 34 | 38 | X138 | X238 | X338 |
| 36 | 40 | X140 | X240 | X340 |
| 38 | 42 | | | |
| 40 | 44 | X144 | X244 | X344 |
| 42 | 46 | | | |
| 44 | 48 | | | |
| 46 | 50 | X150 | X250 | X350 |
| 48 | 52 | | | |
| 50 | 54 | X154 | X254 | X354 |
| 52 | 56 | | | |
| 54 | 58 | | | |
| 56 | 60 | X160 | X260 | X360 |
| 58 | 62 | | | |
| 60 | 64 | X164 | X264 | X364 |
| 62 | 66 | | | |
| 64 | 68 | 90130-X168 | 90130-X268 | 90130-X368 |

VERSION FULLY LOADED

VERSION WITH VOIDS

NOTES:

- 1. FOR ASSY SEE SHEET 3.
- 2. FOR PLATING DETAILS SEE SDES-99000-0003

90130 - x x x x

INDICATES CIRCUIT HOUSING SIZE

PLATING

- 1 - TYPE A
- 2 - TYPE E
- 3 - TYPE F

STYLE: - RIGHT ANGLE ASSY

- 3 VERSION FULLY LOADED BLACK
- 4 VERSION WITH VOIDS BLACK
- 7. VERSION FULLY LOADED NATURAL
- 8. VERSION WITH VOIDS NATURAL

PART NO. SEE CHART
DWG. NO. SDA-90130

| | | | | | | | | | | |
|--|----------------------------------|-------------|--------------------|--|------------------------|--|--|------------------------|---|--------------------|
| SEE SHEET 1 | EC NO. DRWN: CHK: APPR: | DESCRIPTION | QUALITY SYMBOLS | GENERAL TOLERANCES: (UNLESS SPECIFIED) | SCALE | DESIGN UNITS | DIMENSIONS: | SHT | REV | |
| | | | MAJOR CRITICAL | mm | INCH | <input checked="" type="checkbox"/> mm <input type="checkbox"/> INCH | <input type="checkbox"/> INCH <input type="checkbox"/> mm <input type="checkbox"/> mm ONLY | THIRD ANGLE PROJECTION | TITLE: C - GRID III DUAL ROW RIGHT ANGLE SHROUDED HEADER | REVISE ON CAD ONLY |
| | | | | 4 PLACES ±0. ±. | 3 PLACES ±0. ±. | DRAWN BY & DATE KS 10/09/87 | | | | |
| | | | | 2 PLACES ±0. ±. | 1 PLACE ±0. ±. | CHECKED BY & DATE 10/09/87 | | | | |
| | | | ANGULAR: ± ° | APPROVED BY & DATE 10/09/87 | MATERIAL NO. SEE CHART | | DRAWING NO. SDA-90130 | SHEET NO. 4 OF 5 | | |
| DRAFT WHERE APPLICABLE MUST REMAIN WITHIN DIMENSIONS | | | | THIS DRAWING CONTAINS INFORMATION THAT IS PROPRIETARY TO MOLEX INCORPORATED AND SHOULD NOT BE USED WITHOUT WRITTEN PERMISSION. | | | | | | |