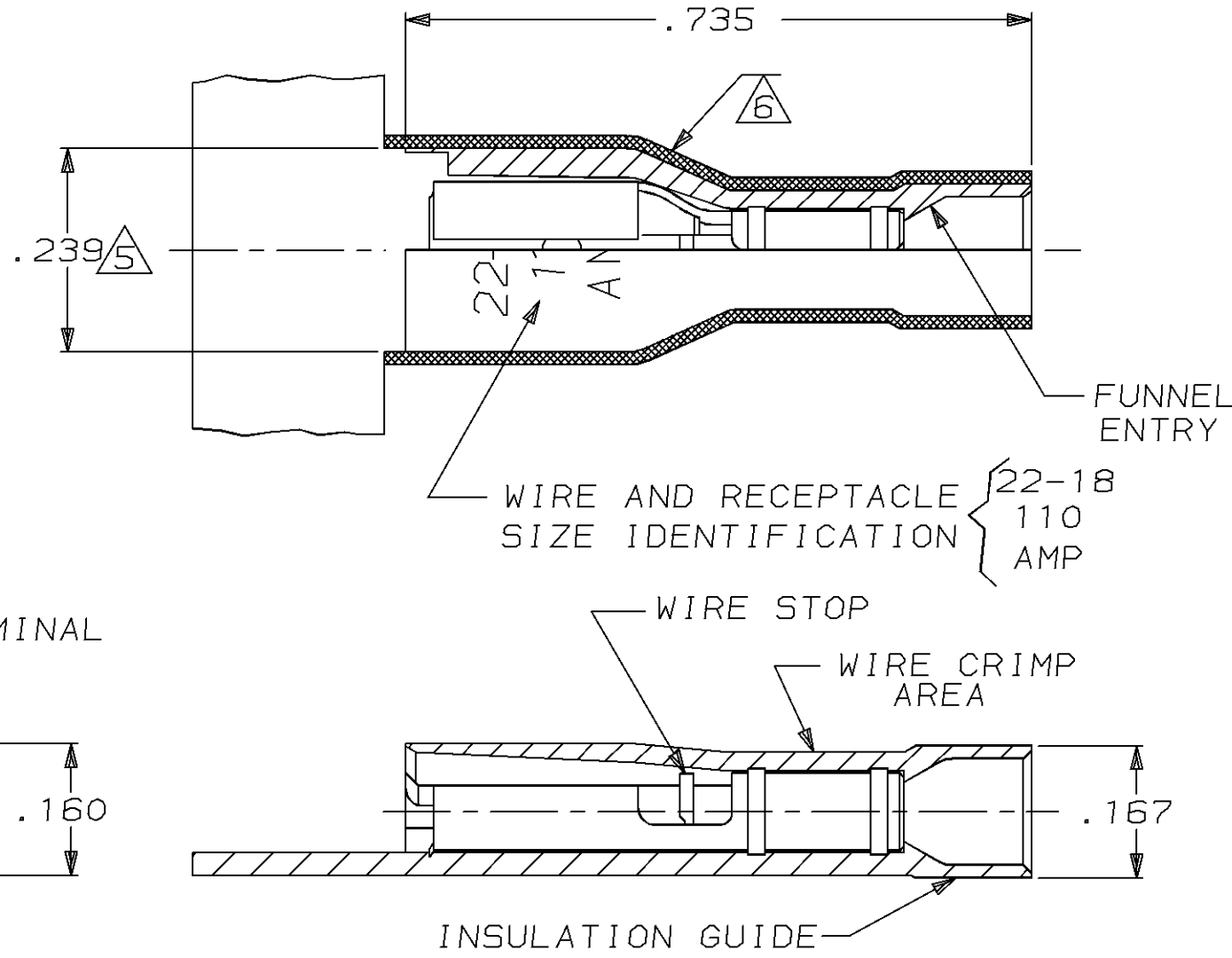
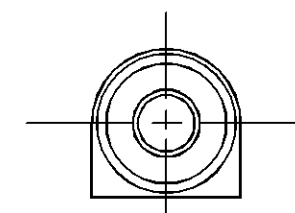
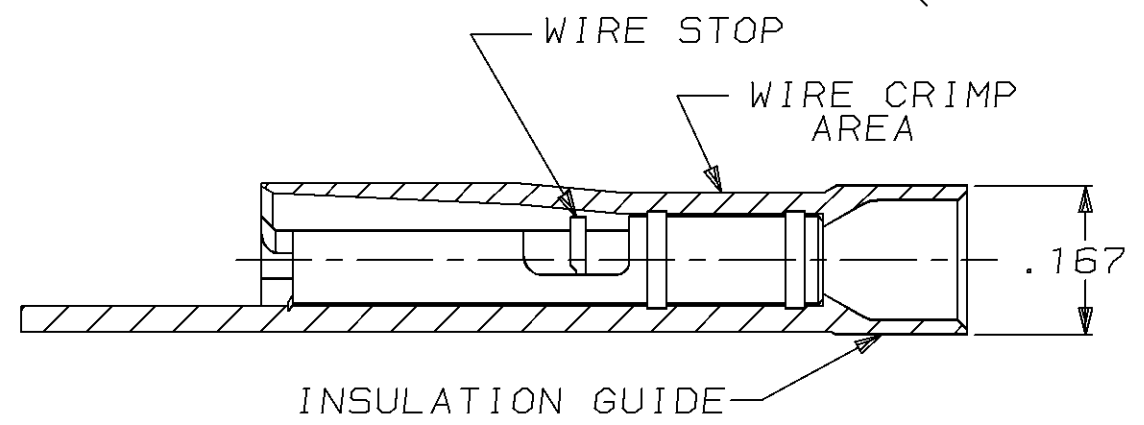
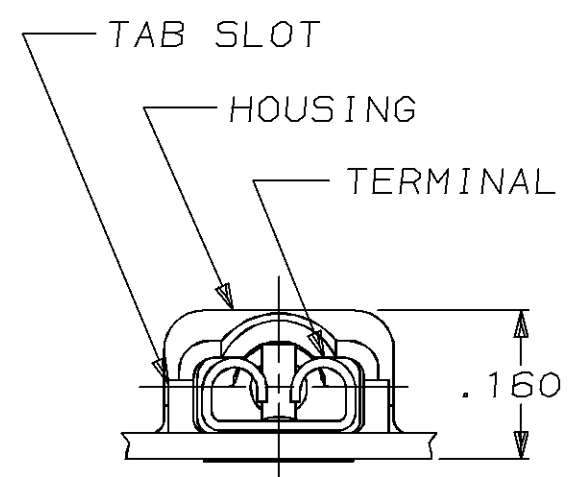


THIS DRAWING IS UNPUBLISHED. RELEASED FOR PUBLICATION, 19
 © COPYRIGHT 19 BY AMP INCORPORATED. ALL INTERNATIONAL RIGHTS RESERVED.

| | | | | | | | | |
|-----|------|---|---|-----------|-----|-----------------|---------|-------|
| LOC | DIST | P | F | REVISIONS | | | | |
| AF | 50 | | | ZONE | LTR | DESCRIPTION | DATE | APPD |
| | | | | | C | REV PER 0041-94 | 6/15/94 | JR/SG |



- 1 MATES WITH A SPECIAL .020±.001X.110 TAB FOR LANDIS AND GYR.
- 2 WIRE STRIP LENGTH .281
- 3 INSULATION SIZE .120 MAX DIA
- 4 CONTINUOUS STRIP ON REELS
- △5 DIMENSION DOES NOT INCLUDE TRIM BURR
- △6 .015 MAX CARRIER TRIM BURR PER SIDE IS ALLOWABLE IN THE SHADED AREA



| | | | |
|--|------------------------------|--|------------------|
| HOUSING: NYLON, COLOR-RED TRANSLUCENT | | 2-521010-2 | |
| RECEPTACLE: #3 HARD BRASS TIN PL .000080 MIN THK | | | |
| MATERIAL & FINISH | | PART NO | |
| DO NOT SCALE PRINT. UNLESS SPECIFIED DIMENSIONS IN INCHES TOLERANCES ON: 2 PLC DEC ± - 3 PLC DEC ± .015 ANGLES ± - | DR 12/4/92 JR RUTH | AMP INCORPORATED Harrisburg, Pa. 17105 | |
| | CHK 12/4/92 MS FEHER | | |
| | APPD 12/4/92 D BRATINA | NAME RECEPTACLE ASSY, ULTRA-FAST, .110 SERIES, 22-18 AWG | |
| | APPD 12/4/92 V KARA. | SIZE B | FSCM NO 00779 |
| MATERIAL SEE TABLE | PRODUCT SPEC 108-2043 | | |
| FINISH SEE TABLE | APPLICATION SPEC 114-2123 | SCALE 5:1 | SHEET 1 OF 1 |
| | WEIGHT - | | |