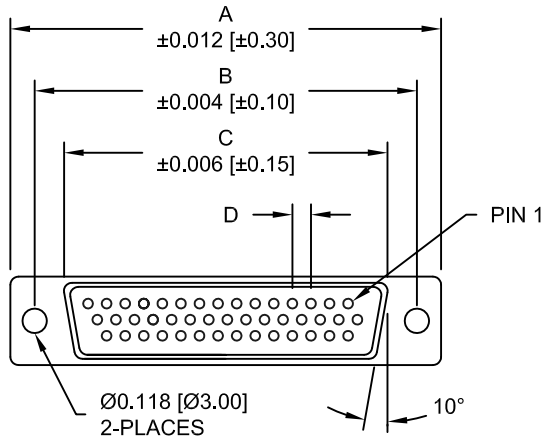


DESCRIPTION: HIGH DENSITY FEMALE - VERTICAL DIP - LOW PROFILE - STAMPED

DIMENSIONS

SIZE	A	B	C	D
15	30.80	24.99	16.34	2.29
	1.213	0.984	0.643	0.090
26	39.20	33.32	24.70	2.29
	1.543	1.312	0.972	0.090
44	53.00	47.04	38.40	2.29
	2.087	1.852	1.512	0.090
62	69.40	63.50	55.80	2.41
	2.732	2.500	2.197	0.095
78	67.00	61.10	52.20	2.41
	2.638	2.406	2.055	0.095

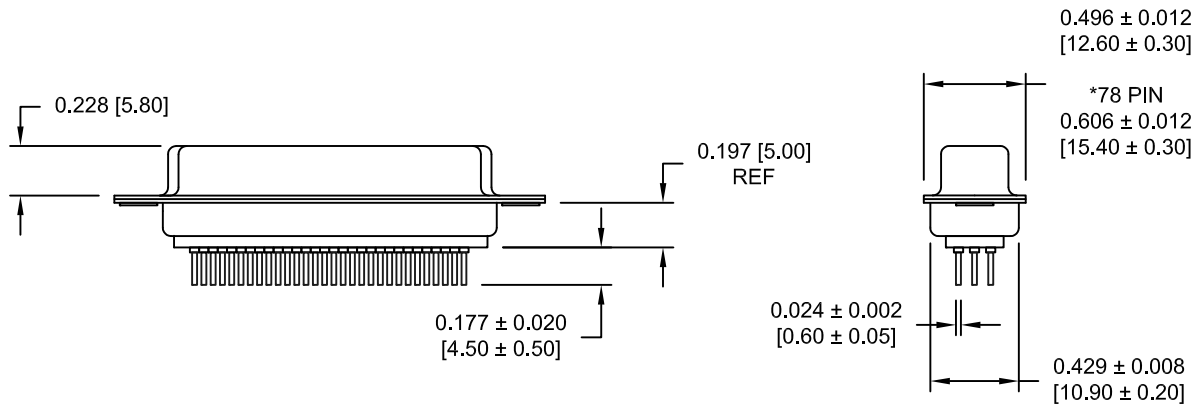


MATERIAL:

SHELL: STEEL, NICKEL PLATED  
 INSULATOR: PBT, UL 94V-O RATED, 230°C PROCESS TEMP  
 CONTACT: BRASS, GOLD FLASH ENTIRE CONTACT

ELECTRICAL:

CURRENT RATING: 2 AMPS  
 WITHSTANDING VOLTAGE: 1,000VAC AT  
 CONTACT RESISTANCE: 10 mOhms Max.  
 INSULATION RESISTANCE: 5,000 MOhms min.  
 VOLTAGE: 500VAC FOR 1 MINUTE  
 TEMPERATURE: -55° C TO +125° C



195-YYY-2 1 3 L YY 1

SERIES \_\_\_\_\_  
 POSITIONS \_\_\_\_\_  
 015 \_\_\_\_\_  
 026 \_\_\_\_\_  
 044 \_\_\_\_\_  
 062 \_\_\_\_\_  
 078 \_\_\_\_\_  
 GENDER \_\_\_\_\_  
 2 = FEMALE  
 TERMINATION \_\_\_\_\_  
 1 = PC MOUNT  
 SHELL PLATING \_\_\_\_\_  
 3 = NICKEL  
 RoHS COMPLIANT \_\_\_\_\_  
 LOW PROCESS TEMP. - 230°C  
 HARDWARE OPTIONS \_\_\_\_\_  
 00 = NO HARDWARE  
 03 = 4-40 HEX STANDOFFS  
 55 = 4-40 INSERTS  
 PLATING OPTIONS \_\_\_\_\_  
 1 = GOLD FLASH

RoHS COMPLIANT

UNITS = INCHES [MM] DO NOT SCALE FROM DRAWING



THESE DRAWINGS AND SPECIFICATIONS ARE THE PROPERTY OF NorComp AND SHALL NOT BE REPRODUCED, COPIED OR USED AS THE BASIS FOR THE MANUFACTURE OR SALE OF APPARATUS WITHOUT WRITTEN PERMISSION.

DRAWN:  
 PAM JENKINS

DATE:  
 09/12/05

NorComp

SCALE:  
 NTS

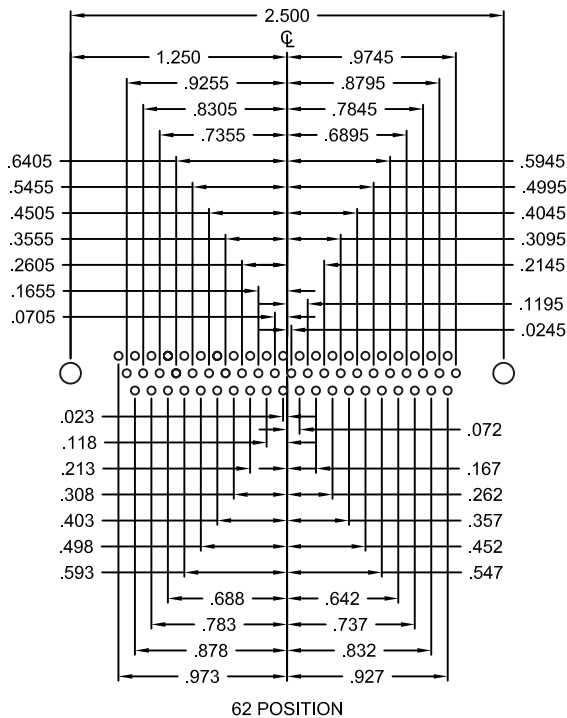
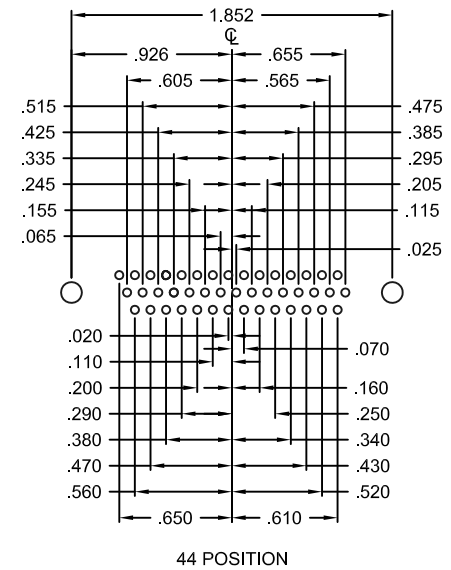
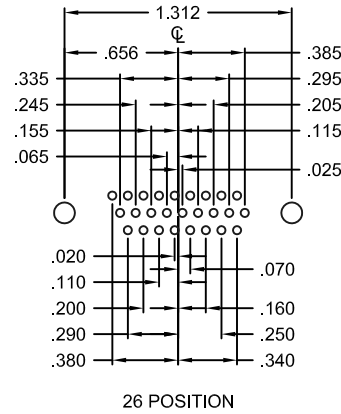
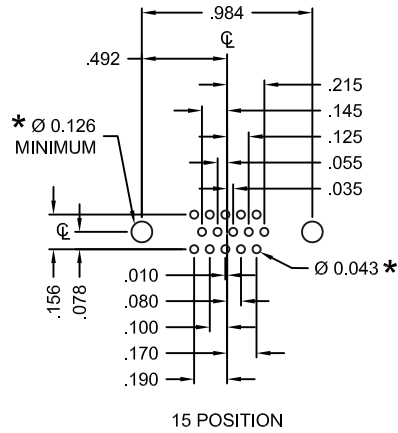
SHEET OF  
 1 3

REV  
 7

DWG NO.

195-YYY-213LYY1

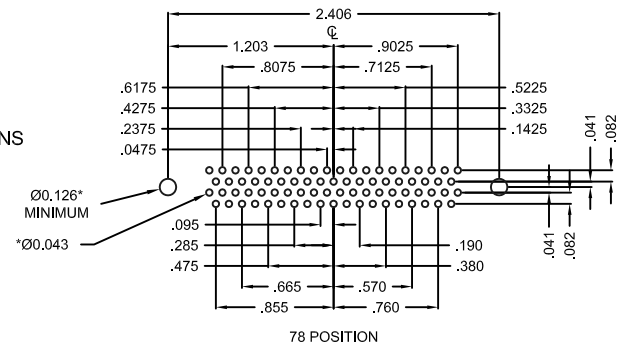
DESCRIPTION: PCB LAYOUT - H.D. VERTICAL - FEMALE



HOLE PATTERN SHOWN ARE FOR FEMALE

UNITS = inch

\* TYP. SUGGESTED SIZE MAY NOT BE SUITABLE FOR ALL APPLICATIONS



RoHS COMPLIANT

UNITS = INCHES [MM] DO NOT SCALE FROM DRAWING



THESE DRAWINGS AND SPECIFICATIONS ARE THE PROPERTY OF NorComp AND SHALL NOT BE REPRODUCED, COPIED OR USED AS THE BASIS FOR THE MANUFACTURE OR SALE OF APPARATUS WITHOUT WRITTEN PERMISSION.

DRAWN:  
PAM JENKINS

DATE:  
09/12/05

NorComp

SCALE:  
NTS

SHEET 2 OF 3

REV 7

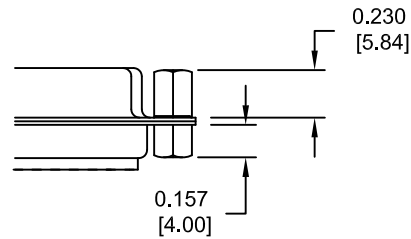
DWG NO.

195-YYY-213LYY1

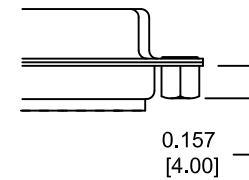
DESCRIPTION: HARDWARE

TOLERANCE:  
ALL DIMENSIONS ARE ± 0.010 [0.25]

03X ..... 0.158" (BOARD SIDE) - 0.230" MATING SIDE



55X ..... 0.158" (BOARD SIDE)



RoHS COMPLIANT

UNITS = INCHES [MM] DO NOT SCALE FROM DRAWING



THESE DRAWINGS AND SPECIFICATIONS ARE THE PROPERTY OF NorComp AND SHALL NOT BE REPRODUCED, COPIED OR USED AS THE BASIS FOR THE MANUFACTURE OR SALE OF APPARATUS WITHOUT WRITTEN PERMISSION.

DRAWN:  
PAM JENKINS

DATE:  
09/12/05

NorComp

SCALE:  
NTS

SHEET OF  
3 3

REV  
7

DWG NO.

195-YYY-213LYY1