

THE INFORMATION CONTAINED HEREIN IS CONSIDERED "PROPRIETARY" TO BEL FUSE INC. AND SHALL NOT BE COPIED, REPRODUCED OR DISCLOSED WITHOUT THE WRITTEN APPROVAL OF BEL FUSE INC.

RoHS
2002/95/EC



ELECTRICAL CHARACTERISTICS @ 25°C

URNS RATIO

| | |
|-----|---------------|
| TP1 | 1CT : 1CT ±2% |
| TP2 | 1CT : 1CT ±2% |
| TP3 | 1CT : 1CT ±2% |
| TP4 | 1CT : 1CT ±2% |

□CL @ 100kHz/100mVRMS 350μH MIN.
8mA DC BIAS (0°C - 70°C)

INS. LOSS

| | |
|------------------|-------------|
| 0.1MHz TO 1MHz | -1.1 dB MAX |
| 1MHz TO 65MHz | -0.5 dB MAX |
| 65MHz TO 100MHz | -0.8 dB MAX |
| 100MHz TO 125MHz | -1.2 dB MAX |

RET. LOSS (MIN) @ 100ΩHMS ±15%

| | |
|--------------|-----------------------|
| 0.5MHz-40MHz | -18 dB |
| 40MHz-100MHz | -12+20LOG(f/80MHz) dB |

CM TO CM REJ

100kHz - 100MHz -30 dB MIN

CM TO DM REJ

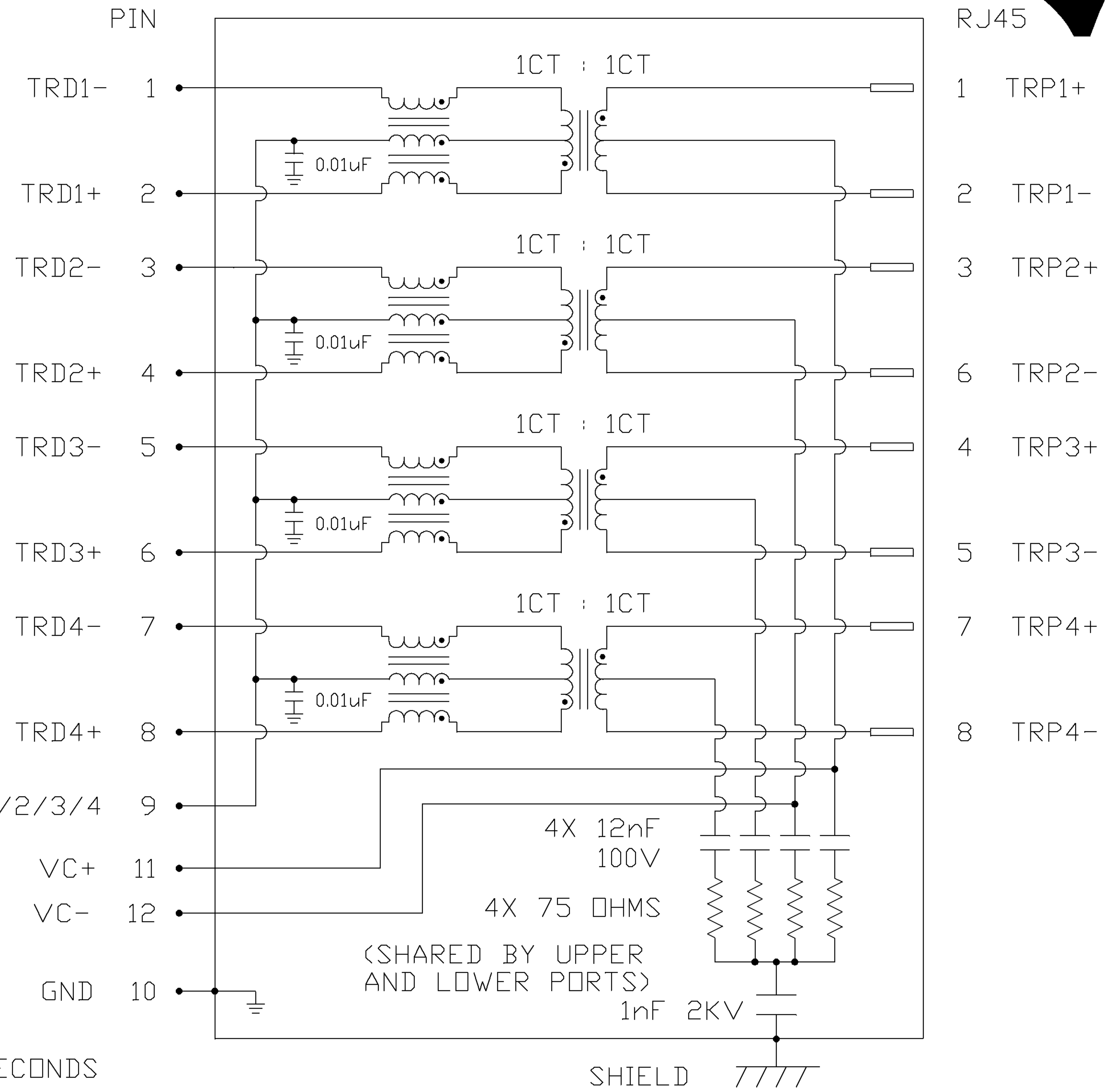
100kHz - 100MHz -35 dB MIN

HIPOT (Isolation Voltage): 2250 VDC

100% OF PRODUCTION TESTED TO COMPLY WITH IEEE 802.3 ISOLATION REQUIREMENTS.

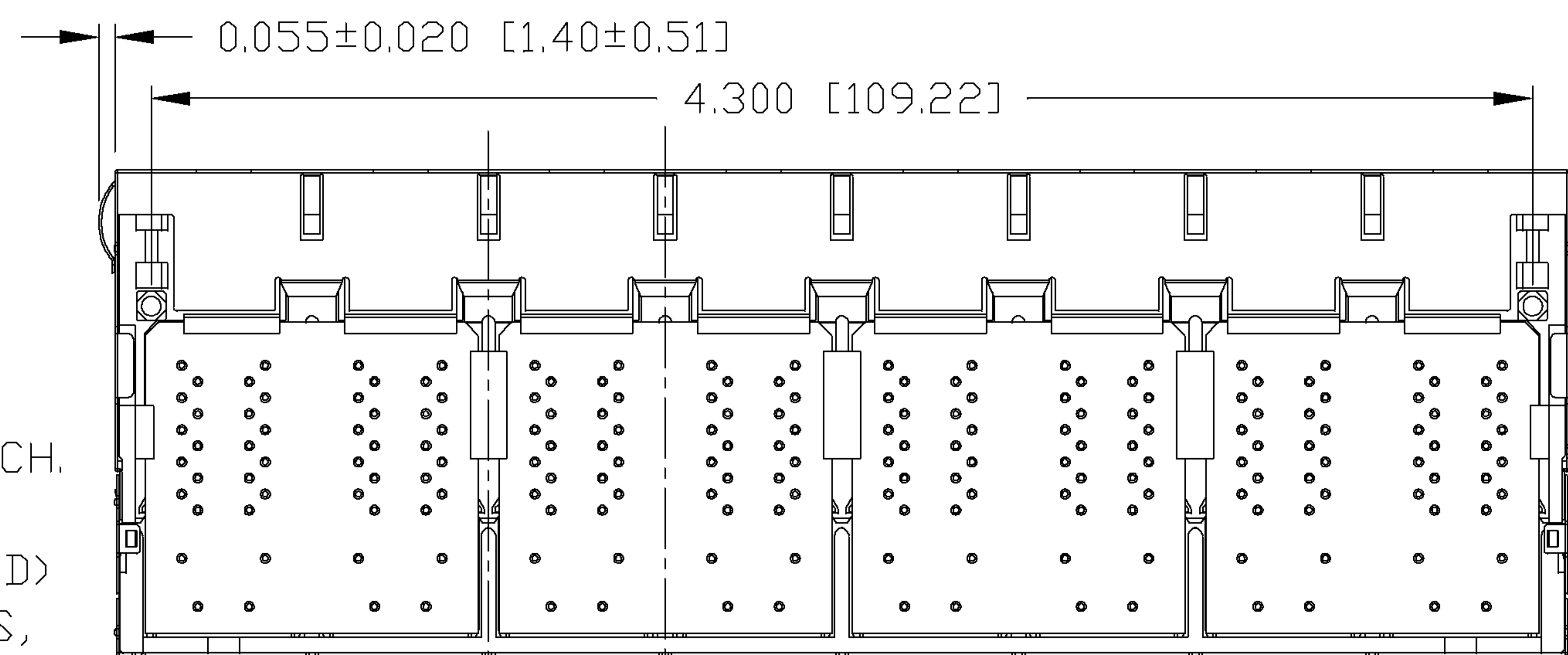
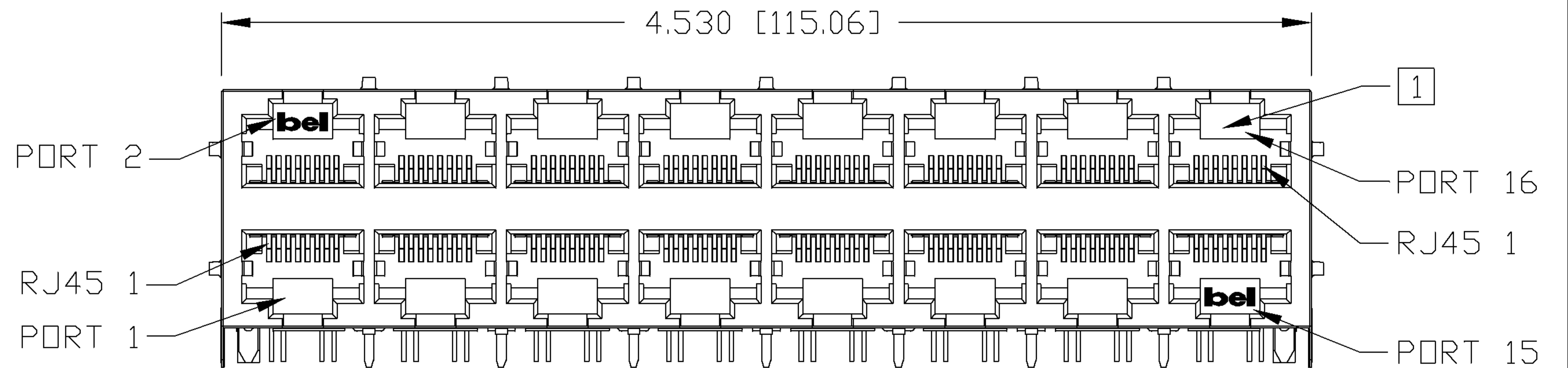
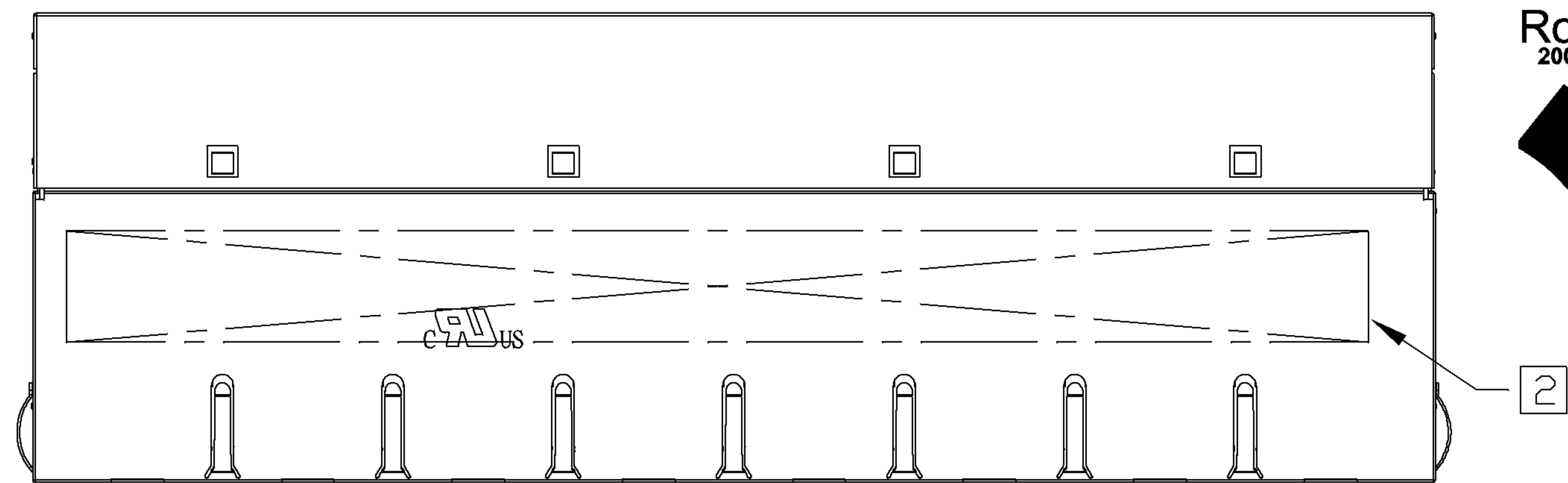
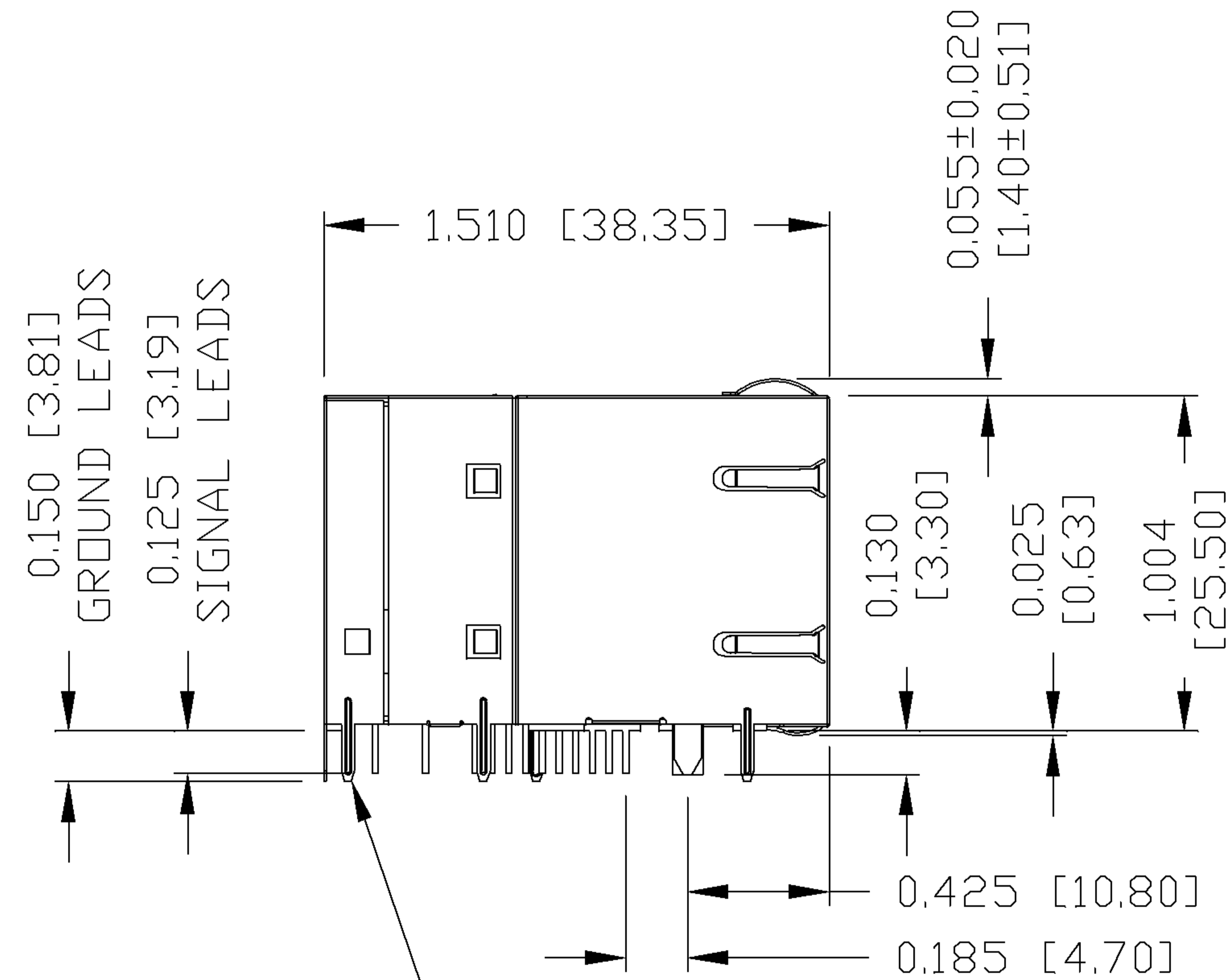
BALANCED DC LINE CURRENT 350 mA MAX.
@ 57 VDC CONTINUOUS
500 mA MAX.
@ 57 VDC for 200 MILLISECONDS

SCHEMATIC



| | | | | | | |
|--------------------------------|------------------|---------------------------------------|--|-------------------------------|------------------------------|--|
| ORIGINATED BY CHOW WANCHUNG | DATE 01-12-08 | TITLE 2X8 gigabit MagJack® VOIP | PART NO. / DRAWING NO. 08542X8R66-F | STANDARD DIM. TOL. IN INCH | [] METRIC DIM. AS REFERENCE | <p>COMPONENTS FOR A CONNECTED PLANET</p> |
| DRAWN BY LEE WEIDE | DATE 01-12-08 | 0854-2X8R-66-F | FILE NAME 08542X8R66-F_B.DWG | .X | UNIT : INCH [mm] | |
| | | | | .XX | SCALE : N/A | |
| | | | | .XXX | SIZE : A4 | PAGE : 2 |

THE INFORMATION CONTAINED HEREIN IS CONSIDERED "PROPRIETARY" TO BEL FUSE INC. AND SHALL NOT BE COPIED, REPRODUCED OR DISCLOSED WITHOUT THE WRITTEN APPROVAL OF BEL FUSE INC.



NOTES:

SOLDER DIPPED GROUND LEAD (13X)

- PLASTIC HOUSING: THERMOPLASTIC PBT
FLAMMABILITY RATING UL 94V-0
- CONTACT PLATING: 50 MICRO-INCH HARD GOLD PLATING
- OUTPUT PINS: TIN-COATED COPPER WIRE, DIA 0.018 INCH.
- METAL SHIELD: NICKEL PLATED ON COPPER ALLOY.
(ALL GROUND LEADS ARE SOLDER DIPPED)

- [1] JACK CAVITY CONFORMS TO FCC RULES AND REGULATIONS, PART 68 SUBPART F.
- [2] MARK PART WITH MFG LOGO, PART NUMBER, DATE CODE AND MFG NAME.

c **us** UL RECOGNIZED - FILE #E196366 AND E169987.
RoHS COMPLIANCE, PER EU DIRECTIVE 2002/95/EC.

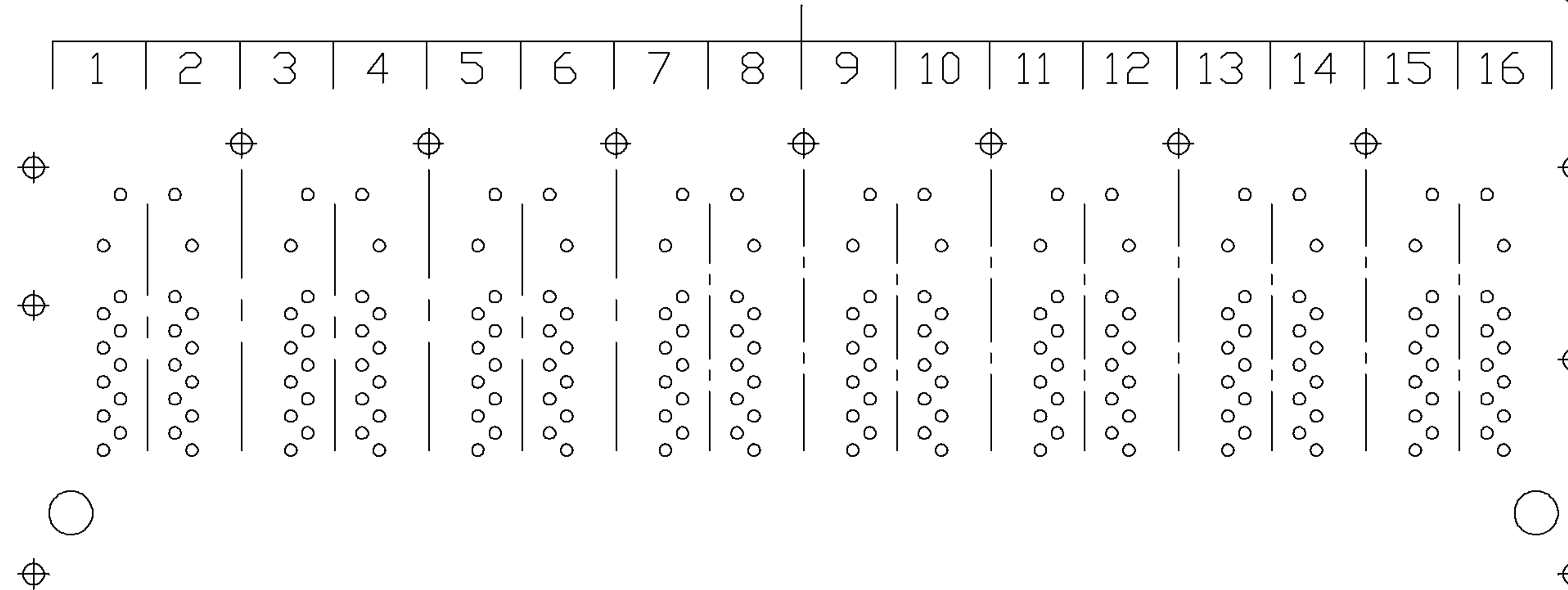
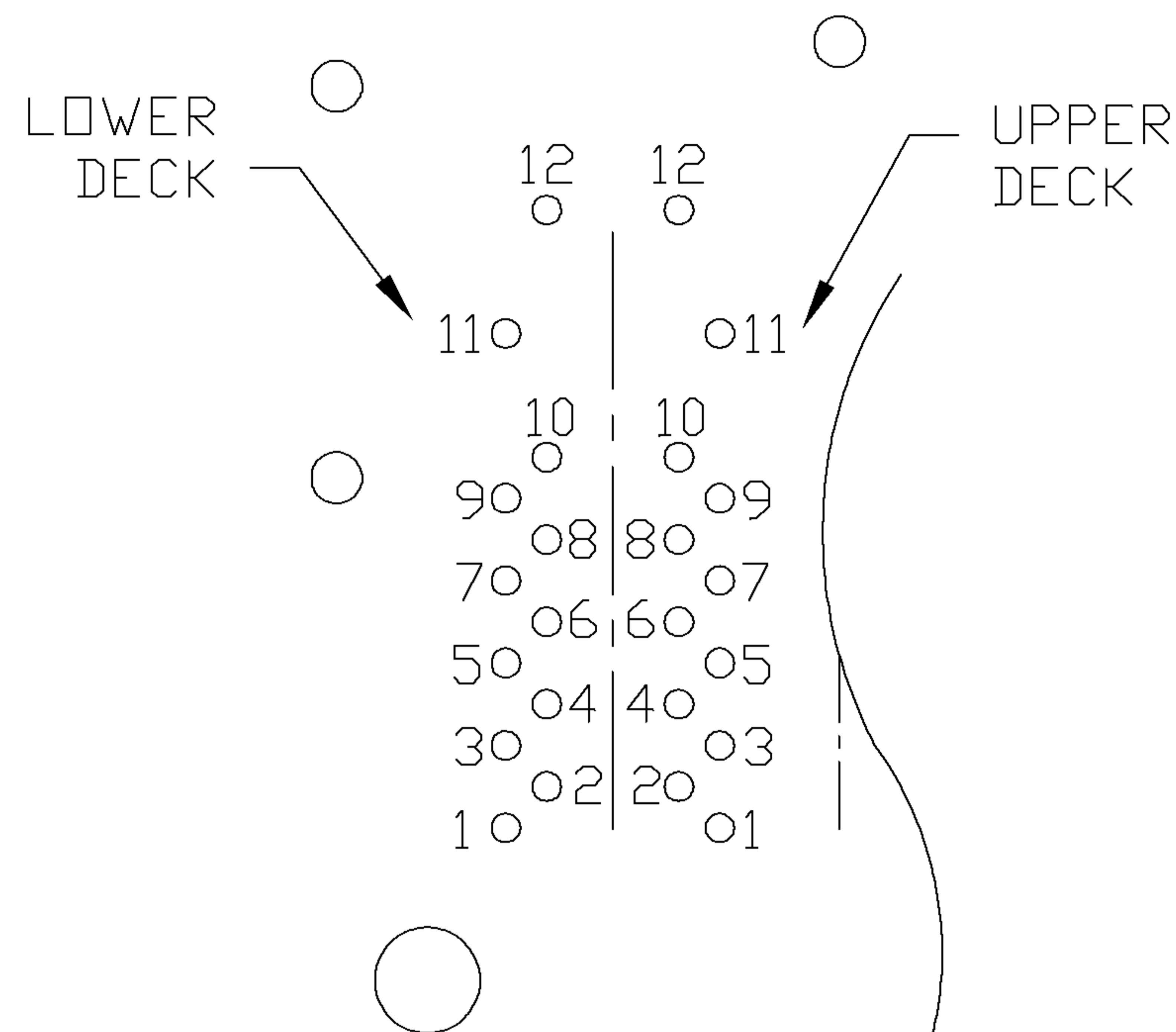
| | | | | | | | | |
|--------------------------|------------------|---------------------------------------|--|---------------|---|------------------------------|-----------|-----------------------------------|
| ORIGINATED BY LIU QIN | DATE 01-12-08 | TITLE 2X8 gigabit MagJack® VDIP | PART NO. / DRAWING NO. 08542X8R66-F | STANDARD DIM. | | [] METRIC DIM. AS REFERENCE | | |
| | | | | TOL. IN INCH | | UNIT : INCH [mm] | REV. : B | |
| DRAWN BY CHEN TING | DATE 01-12-08 | 0854-2X8R-66-F | FILE NAME 08542X8R66-F_B.DWG | .X | / | SCALE : N/A | SIZE : A4 | COMPONENTS FOR A CONNECTED PLANET |
| | | | | .XX | | ±0.010 | PAGE : 3 | |

THE INFORMATION CONTAINED HEREIN IS CONSIDERED "PROPRIETARY" TO BEL FUSE INC. AND SHALL NOT BE COPIED, REPRODUCED OR DISCLOSED WITHOUT THE WRITTEN APPROVAL OF BEL FUSE INC.

RoHS
2002/95/EC

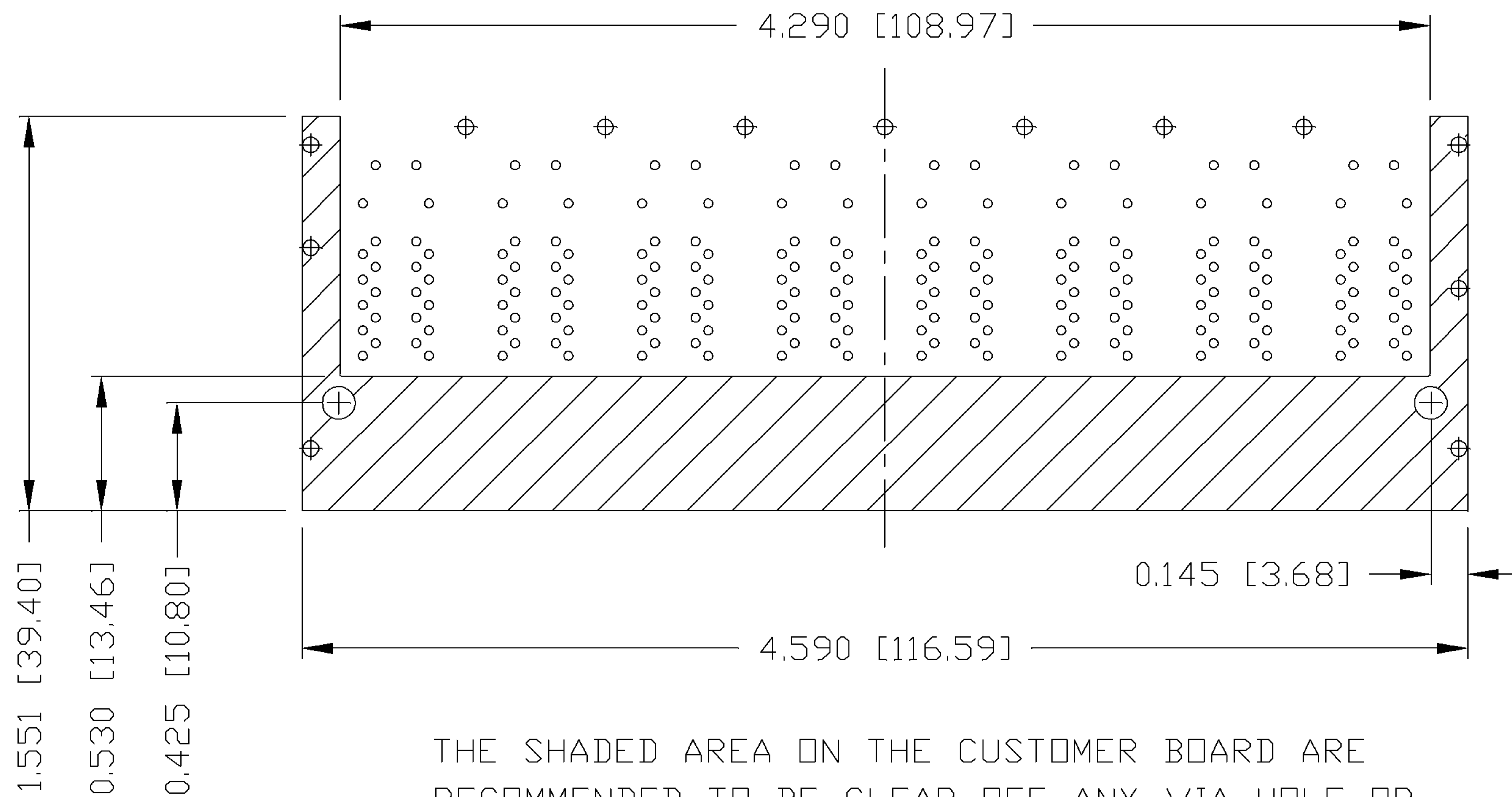


PORT ASSIGNMENT
(COMPONENT SIDE VIEW)



PIN-OUT INFORMATION
(COMPONENT SIDE VIEW)

| | |
|----|-------------|
| 12 | VC- |
| 11 | VC+ |
| 10 | GND |
| 9 | TRCT1/2/3/4 |
| 8 | TRD 4+ |
| 7 | TRD 4- |
| 6 | TRD 3+ |
| 5 | TRD 3- |
| 4 | TRD 2+ |
| 3 | TRD 2- |
| 2 | TRD 1+ |
| 1 | TRD 1- |



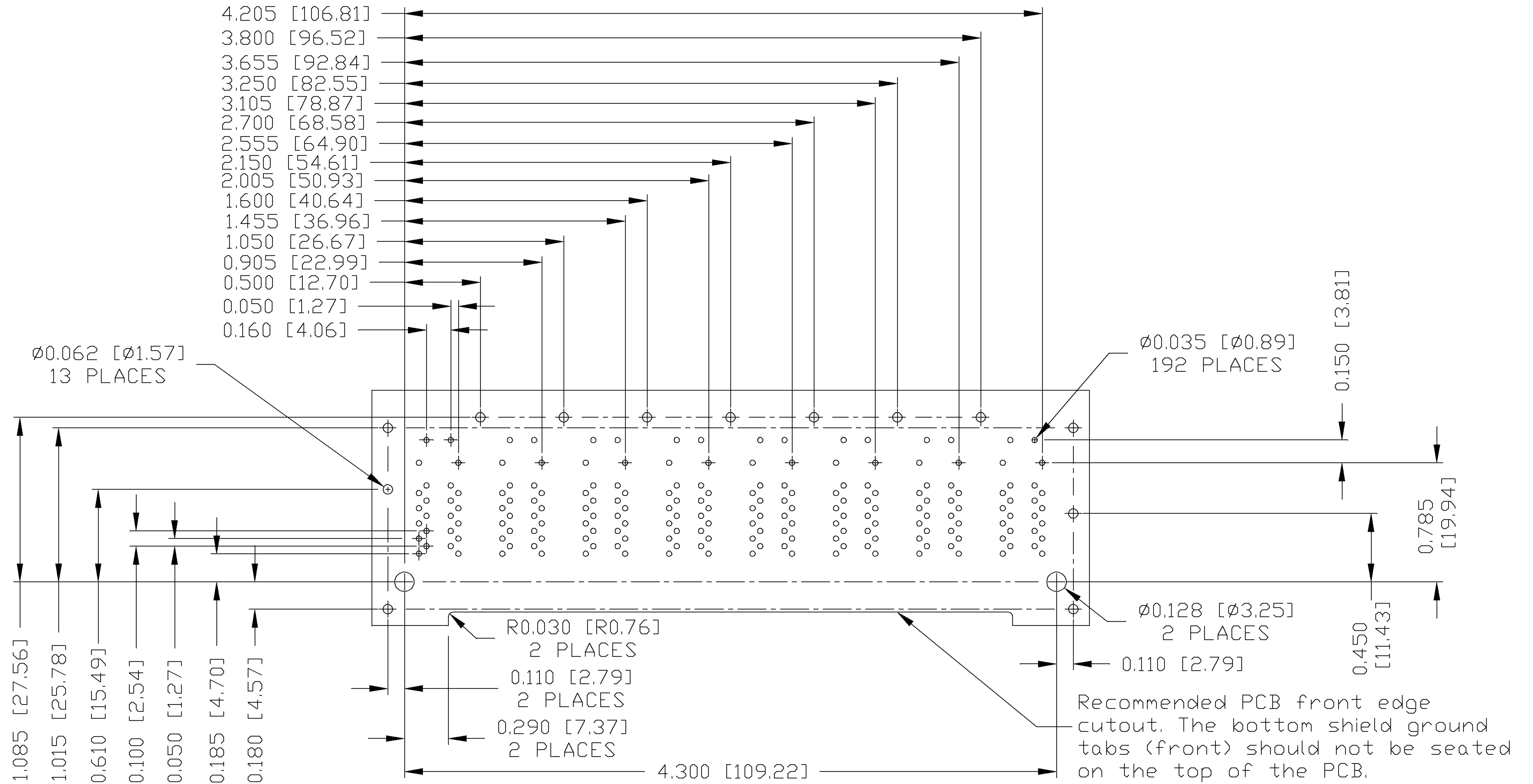
THE SHADED AREA ON THE CUSTOMER BOARD ARE RECOMMENDED TO BE CLEAR OFF ANY VIA HOLE OR COMPONENT PAD.

| | | | | | | |
|--------------------------|------------------|---------------------------------------|--|-------------------------------|------------------------------|---|
| ORIGINATED BY LIU QIN | DATE 01-12-08 | TITLE 2X8 gigabit MagJack® VOIP | PART NO. / DRAWING NO. 08542X8R66-F | STANDARD DIM. TOL. IN INCH | [] METRIC DIM. AS REFERENCE | COMPONENTS FOR A CONNECTED PLANET |
| DRAWN BY CHEN TING | DATE 01-12-08 | 0854-2X8R-66-F | FILE NAME 08542X8R66-F_B.DWG | .X | UNIT : INCH [mm] | |
| | | | | .XX | SCALE : N/A | |
| | | | | .XXX | ±0.004 | REV. : B |
| | | | | | | SIZE : A4 |
| | | | | | | PAGE : 4 |

THE INFORMATION CONTAINED HEREIN IS CONSIDERED "PROPRIETARY" TO BEL FUSE INC. AND SHALL NOT BE COPIED, REPRODUCED OR DISCLOSED WITHOUT THE WRITTEN APPROVAL OF BEL FUSE INC.



SUGGESTED FOOTPRINT
(COMPONENT SIDE VIEW)



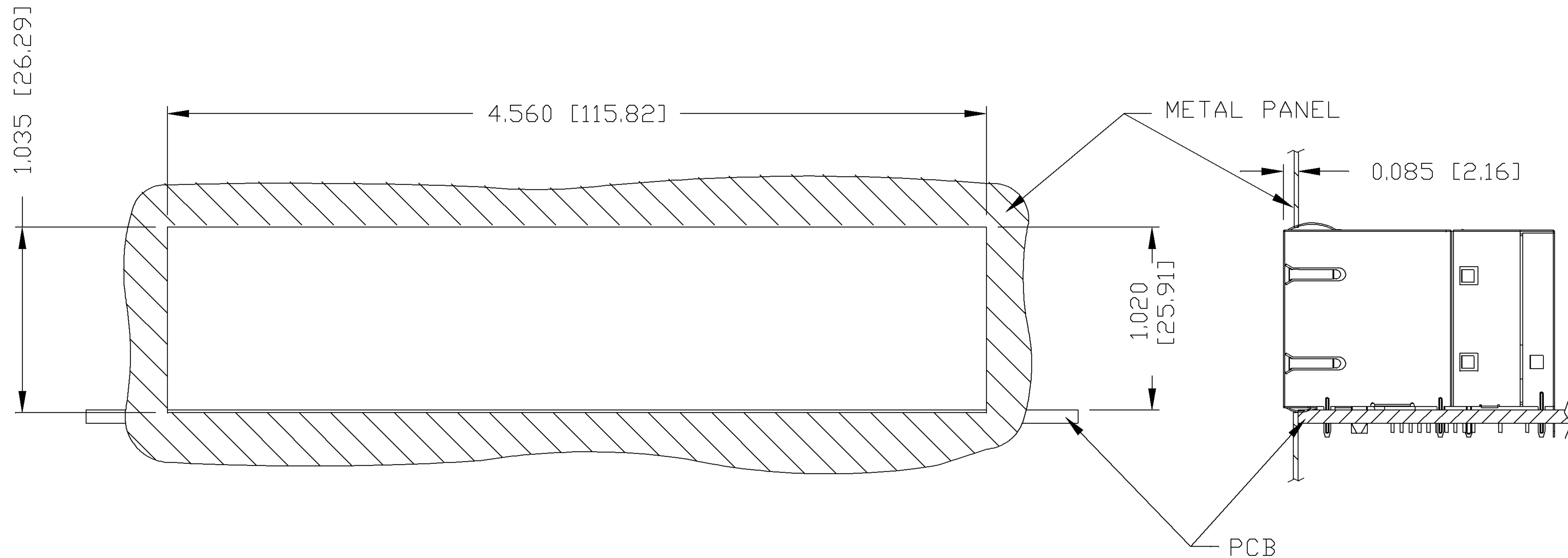
| | | | | | | |
|--------------------------|------------------|---------------------------------------|--|-------------------------------|------------------------------|---------------------------------------|
| ORIGINATED BY LIU QIN | DATE 01-12-08 | TITLE 2X8 gigabit MagJack® VDIP | PART NO. / DRAWING NO. 08542X8R66-F | STANDARD DIM. TOL. IN INCH | [] METRIC DIM. AS REFERENCE | COMPONENTS FOR A CONNECTED PLANET |
| DRAWN BY CHEN TING | DATE 01-12-08 | 0854-2X8R-66-F | FILE NAME 08542X8R66-F_B.DWG | .X | UNIT : INCH [mm] | |
| | | | | .XX | SCALE : N/A | |
| | | | | .XXX ±0.004 | SIZE : A4 | |
| | | | | | | REV. : B |
| | | | | | | SIZE : A4 |
| | | | | | | PAGE : 5 |

THE INFORMATION CONTAINED HEREIN IS CONSIDERED "PROPRIETARY" TO BEL FUSE INC. AND SHALL NOT BE COPIED, REPRODUCED OR DISCLOSED WITHOUT THE WRITTEN APPROVAL OF BEL FUSE INC.

RoHS
2002/95/EC



SUGGESTED PANEL OPENING



NOTE:

THE DISTANCE OF PANEL INSIDE SURFACE RELATIVE TO FRONT SURFACE OF PART IS ONLY A SUGGESTION. IN CASE THIS DISTANCE IS DIFFERENT, THE REQUIRED PANEL OPENING DIMENSIONS CHANGE ACCORDINGLY.

PACKING INFORMATION

PACKING TRAY : 0200-9999-D1 (TOP)

0200-9999-D2 (BOTTOM)

PACKING QUANTITY : 10 PCS FINISHED GOODS PER TRAY.

5 TRAYS (50 PCS FINISHED GOODS) PER CARTON BOX.

NOTE : CARDBOARDS ARE PLACED BETWEEN LAYERS OF PACKING TRAY INSIDE CARTON BOX.

(INCLUDE THE UPPERMOST AND LOWERMOST TRAY)

| | | | | | | |
|--------------------------|------------------|---|--|-------------------------------|------------------------------|-----------|
| ORIGINATED BY LIU QIN | DATE 01-12-08 | TITLE 2X8 gigabit MagJack® VOIP 0854-2X8R-66-F | PART NO. / DRAWING NO. 08542X8R66-F | STANDARD DIM. TOL. IN INCH | [] METRIC DIM. AS REFERENCE | |
| DRAWN BY CHEN TING | DATE 01-12-08 | | FILE NAME 08542X8R66-F_B.DWG | .X | UNIT : INCH [mm] | REV. : B |
| | | | | .XX | SCALE : N/A | SIZE : A4 |
| | | | | .XXX | ±0.004 | PAGE : 6 |

