

SECTION F-F

| DIMENSIONS | | | | | |
|------------|---------|-------------------------|---------|---------|---------|
| POSITION | A ±0.20 | B $\frac{+0.15}{-0.05}$ | C ±0.20 | D ±0.23 | E ±0.30 |
| 36 | 6 | 7.65 | 12.30 | 25.00 | 34.8 |
| 64 | 20 | 21.65 | 26.30 | 39.00 | 48.8 |
| 98 | 37 | 38.65 | 43.30 | 56.00 | 65.8 |
| 164 | 70 | 71.65 | 76.30 | 89.00 | 98.8 |

| DIMENSION "K" | DIMENSION "L" | PCB THICKNESS (DIM "J") |
|---------------|---------------|-------------------------|
| 1.40 | 2.50 | 1.80 MM |
| 1.60 | 2.50 | 2.08 MM |
| 1.90 | 2.50 | 2.30 MM |

NOTES:

- MATERIAL:
 - HOUSING: THERMOPLASTIC, HIGH TEMP., UL94V-0;
 - CONTACTS: COPPER ALLOY.
- CONTACT FINISH:
 - SELECTED GOLD PLATING ON CONTACT AREA.
- NO TIE BAR PERMITTED FROM CARD EDGE TO LEADING EDGE OF PAD FOR PINS A1 AND PIN No. "F"
- CHAMFER EDGES MUST BE FREE OF CUTTING EDGE.
- FREQUENCY & LOCATION AT SUPPLIER DISCRETION. RIDGE MAY BE CONTINUOUS WITH NO BREAKS.
- PRODUCT SPEC.: GS-12-233
PACKING SPEC: GS-14-910
- THE HSG WILL WITHSTAND ESPOSURE TO 260 +/-5C SOLDER BATH TEMP. FOR 5 SEC. IN A REFLOW SOLDER APPLICATION.

PRODUCT NUMBER CODE

10069690 -X 0 X X X X LF

HOUSING COLOR OPTIONS
0-NATURAL
1-BLACK
RESERVE

LEAD FREE
PACKAGING OPTIONS
T:TRAY PACKAGING (ONLY 98P WITH CAP; 36P,64P,164P WITHOUT CAP)
P:TRAY PACKAGING WITH CAP (FOR 36P,64P AND 164P ONLY)

POS OPTIONS
0-36
1-64
2-98
3-164

TERMINAL PLATING OPTIONS
0-50u" Ni UNDERPLATE
30u" Au CONTACT AREA
100u" MATT TIN TAIL AREA
1-50u" Ni UNDERPLATE
15u" Au CONTACT AREA
100u" MATTE TIN TAIL AREA
2-50u" Ni UNDERPLATE
GOLD FLASH CONTACT AREA
100u" MATT TIN TAIL AREA

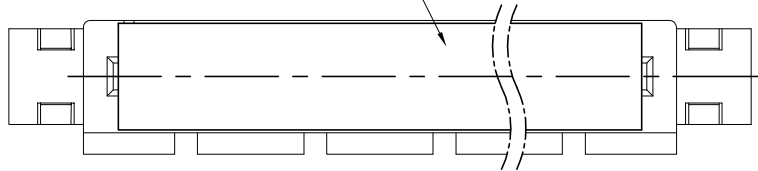
PCB THICKNESS OPTION
0- 2.08 MM
1- 2.30 MM
2- 1.80 MM

| | | | | |
|--------------|----------|------------|-------------|----------------------------|
| mat'l. code | surface | tolerance | projection | product family |
| - | - | ASME_Y14.5 | | PCI_EXPRESS |
| lfr | ecn no | dr | date | title |
| A | T07-1077 | S.Lin | 03/13/07 | PCI_EXPRESS_CARD_EDGE_GEN3 |
| B | T07-1098 | S.Lin | 06/08/07 | STRADDLE_MOUNT_ASS'Y |
| C | T00-1001 | J.H | 1/3/08 | |
| D | DG-23735 | LZH | 4/05/16 | |
| E | DG-30520 | LZH | 6/21/18 | |
| | | dr | ZHENHUA_LIU | 2016-03-25 |
| | | engr | ZHENHUA_LIU | 2016-03-25 |
| | | chr | STONE_LI | 2016-03-25 |
| | | appd | PM_ZHENG | 2016-03-25 |
| sheet index | revision | E | | |
| | sheet | | | |
| Amphenol FCI | | | | 10069690 |
| type | | | | CUSTOMER Drawing |

NOTES:

1. MATERIAL:
INSERT CAP: THERMOPLASTIC, HIGH TEMP.,
UL94V-0; BLACK COLOR.
2. THE INSERT CAP SHALL BE REMOVED OUT
AFTER RE-FLOWED PROCESS.

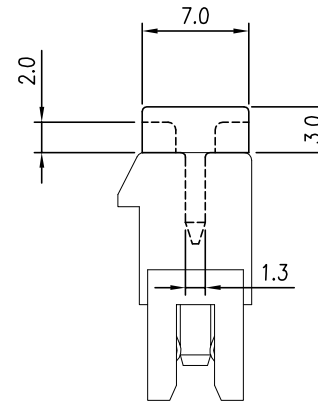
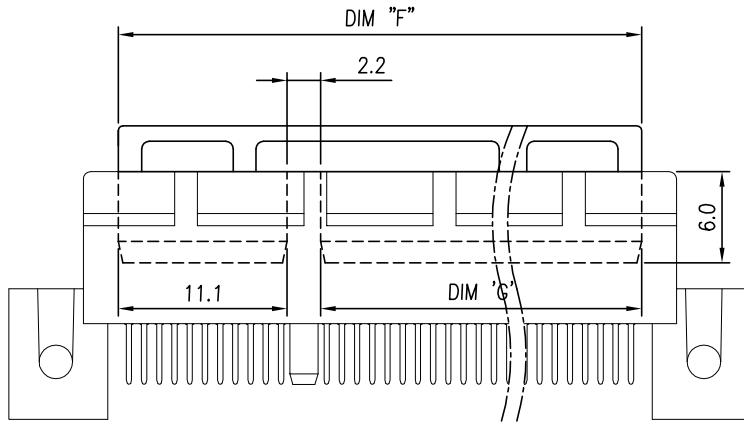
INSERT CAP



| DIMENSIONS | | |
|------------|------|------|
| POSITION | F | G |
| 36 | 20.4 | 7.1 |
| 64 | 34.4 | 21.1 |
| 98 | 51.4 | 38.1 |
| 164 | 84.4 | 71.1 |

A

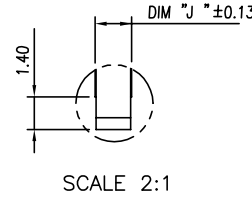
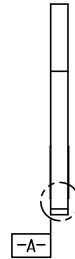
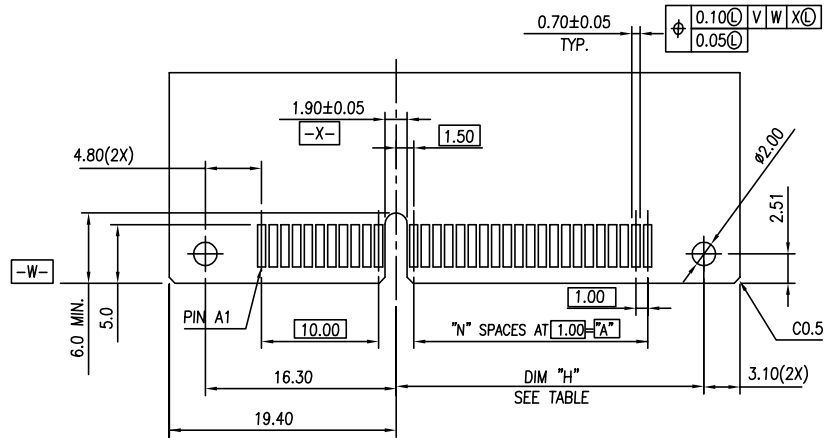
A



B

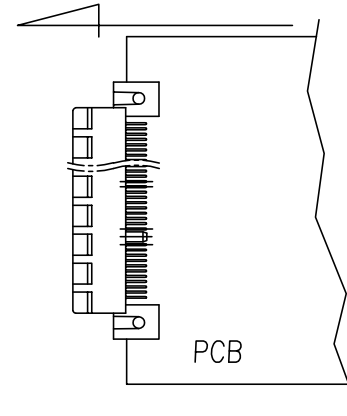
B

| | | | | | | | | | |
|-------------|--|----------------|--|-------------|--|------------|--|--|--|
| mat'l. code | | surface | | tolerance | | projection | | product family | |
| - | | - | | ASME_Y14.5 | | | | PCI_EXPRESS | |
| ltr | | ecn no | | dr | | date | | title | |
| | | | | | | | | PCI_EXPRESS_CARD_EDGE_GEN3 STRADDLE_MOUNT_ASS'Y | |
| | | | | angles | | | | dwg no | |
| | | | | ±2' | | scale N/A | | sheet 2 of 4 | |
| | | dr | | ZHENHUA_LIU | | 2016-03-25 | | size | |
| | | enfr | | ZHENHUA_LIU | | 2016-03-25 | | A4 | |
| | | chr | | STONE_LI | | 2016-03-25 | | 10069690 | |
| | | appd | | PM_ZHENG | | 2016-03-25 | | type | |
| | | | | | | | | CUSTOMER Drawing | |
| sheet index | | revision sheet | | E | | | | | |

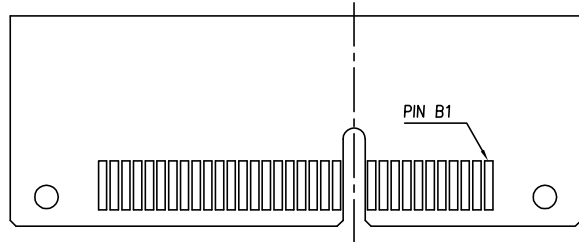


SCALE 2:1

REFLOW DIRECTION



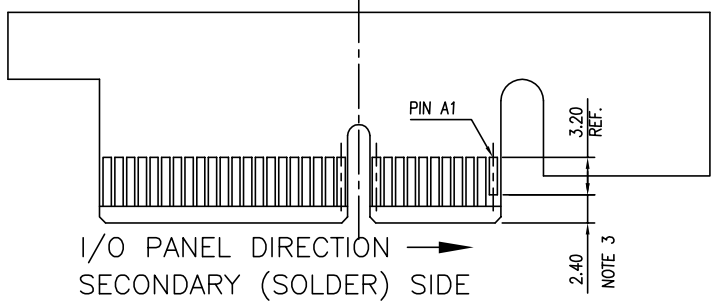
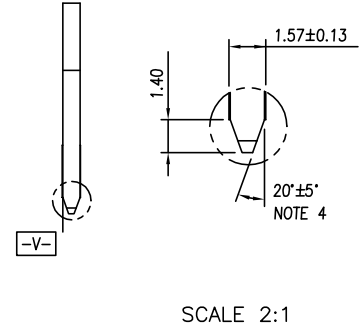
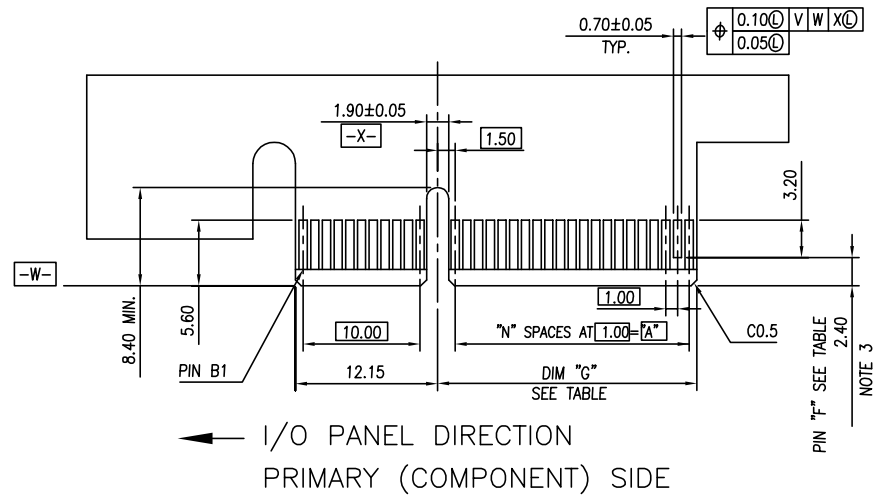
RECOMMEND OF REFLOW DIRECTION



RECOMMEND OF PCB DIMENSIONS

| # | POS | REF. | N | DIM "H" |
|-----|-----|------|----|---------|
| 36 | | | 6 | 12.30 |
| 64 | | | 20 | 26.30 |
| 98 | | | 37 | 43.30 |
| 164 | | | 70 | 76.30 |

| | | | | | | | | | | | | | | | | | |
|-------------|--|----------|--|---------|--|------|--|---------------------------------------|--|------------|--|-----------------|--|----------------------------|--|----------------------|--|
| mat'l. code | | - | | surface | | - ✓ | | tolerance | | ASME_Y14.5 | | projection | | product family | | PCI_EXPRESS | |
| lfr | | ecn no | | dr | | date | | tolerances unless otherwise specified | | MM | | title | | PCI_EXPRESS_CARD_EDGE_GEN3 | | STRADDLE_MOUNT_ASS'Y | |
| | | | | | | | | angles | | .0±.0.20 | | scale N/A | | dwg no | | sheet 3 of 4 size | |
| | | | | | | | | ±2' | | .00±.0.13 | | Amphenol FCI | | 10069690 | | A4 | |
| | | | | | | | | | | .000±.0.05 | | | | type | | CUSTOMER Drawing | |
| sheet | | revision | | E | | | | | | | | | | | | | |
| index | | sheet | | | | | | | | | | | | | | | |



ADD-IN CARD EDGE-FINGER DIMENSIONS

| # | POS REF. | N | DIM "G"±0.20 | "F" |
|-----|----------|-------|--------------|-----|
| 36 | 6 | 8.15 | B17 | |
| 64 | 20 | 22.15 | B31 | |
| 98 | 37 | 39.15 | B48 | |
| 164 | 70 | 72.15 | BB1 | |

| | | | | | | | | | | | | | | | | | |
|-------------|--|----------------|--|---------|--|-------------|--|---------------------------------------|--|------------|--|-----------------|--|----------------------------|--|-------------------|--|
| mat'l. code | | - | | surface | | - ✓ | | tolerance | | ASME_Y14.5 | | projection | | product family | | PCI_EXPRESS | |
| lfr | | ecn no | | dr | | date | | tolerances unless otherwise specified | | MM | | title | | PCI_EXPRESS_CARD_EDGE_GEN3 | | 5 | |
| | | | | | | | | angles | | .0±0.20 | | scale N/A | | STRADDLE_MOUNT_ASS'Y | | | |
| | | | | | | | | ±2' | | .00±0.13 | | | | dwg no | | sheet 4 of 4 size | |
| | | | | dr | | ZHENHUA_LIU | | 2016-03-25 | | .000±0.05 | | Amphenol FCI | | 10069690 | | A4 | |
| | | | | enfr | | ZHENHUA_LIU | | 2016-03-25 | | | | | | type | | CUSTOMER Drawing | |
| | | | | chr | | STONE_LI | | 2016-03-25 | | | | | | | | | |
| | | | | appd | | PM_ZHENG | | 2016-03-25 | | | | | | | | | |
| sheet index | | revision sheet | | E | | | | | | | | | | | | | |