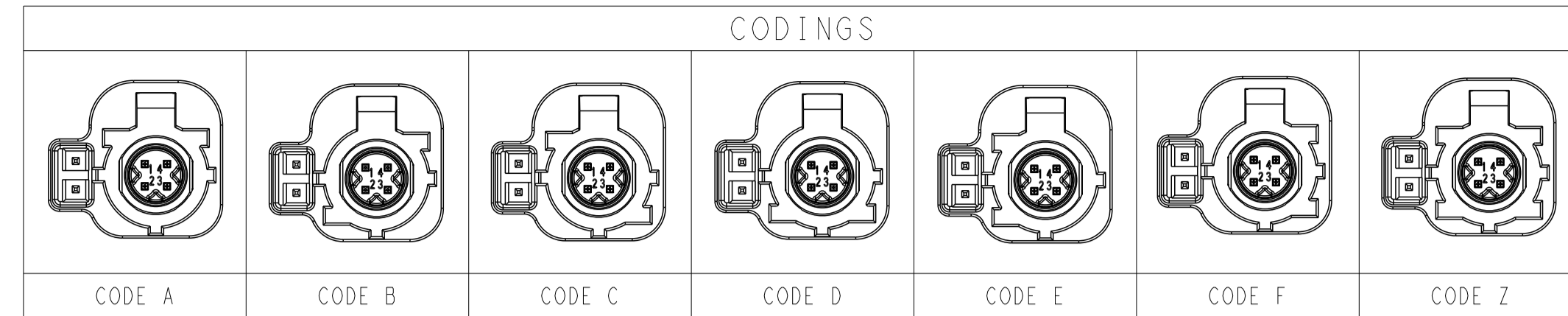
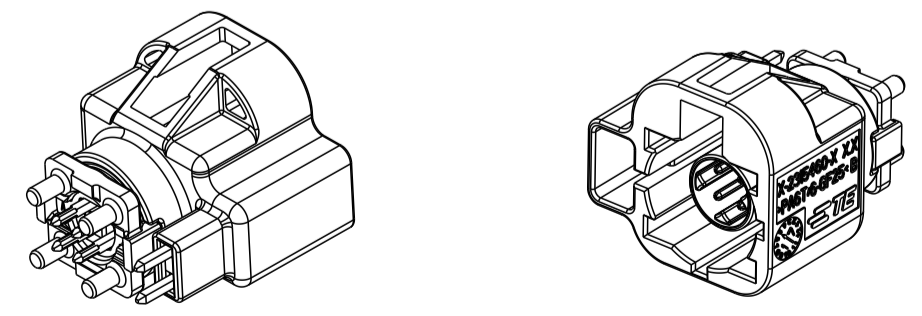
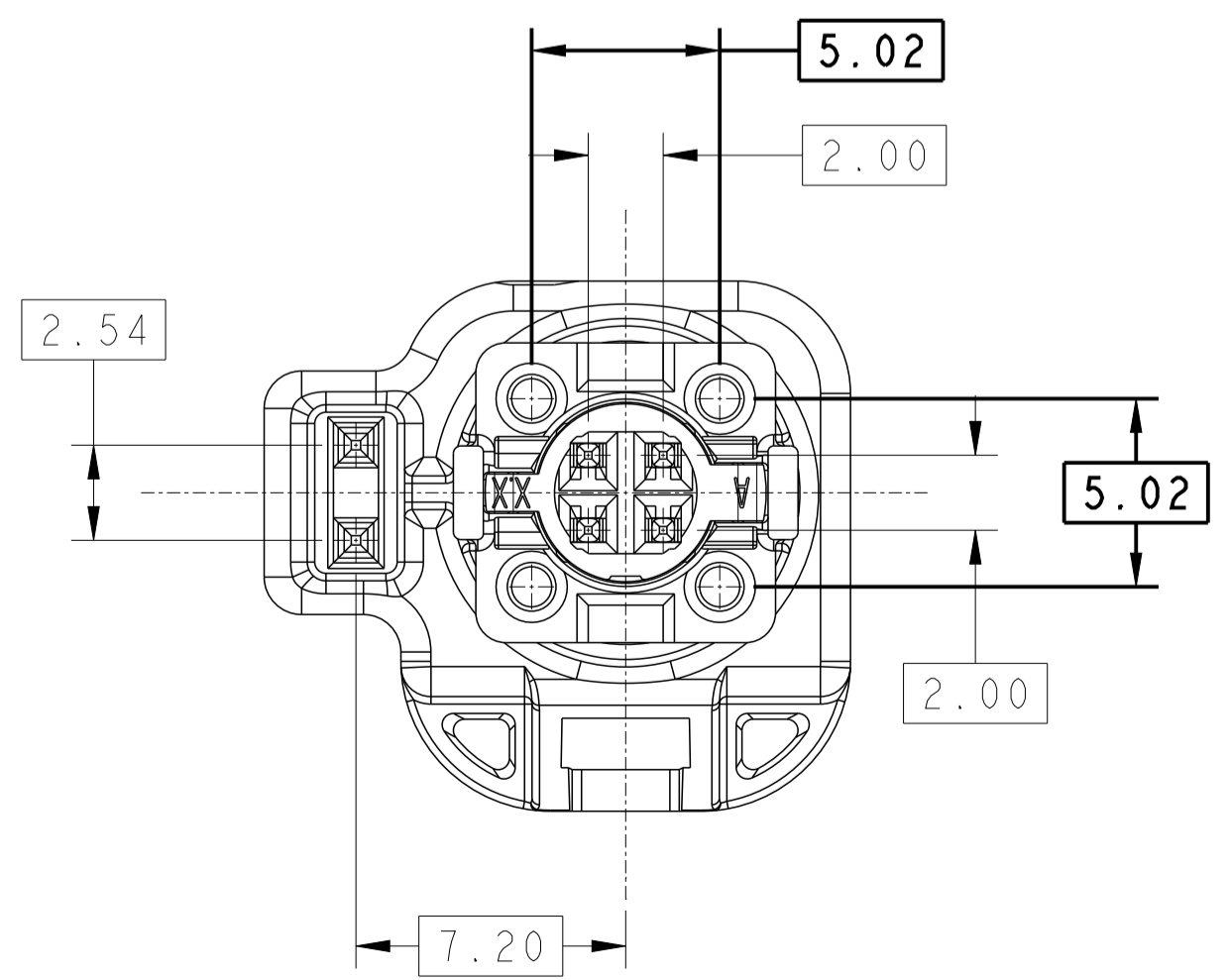
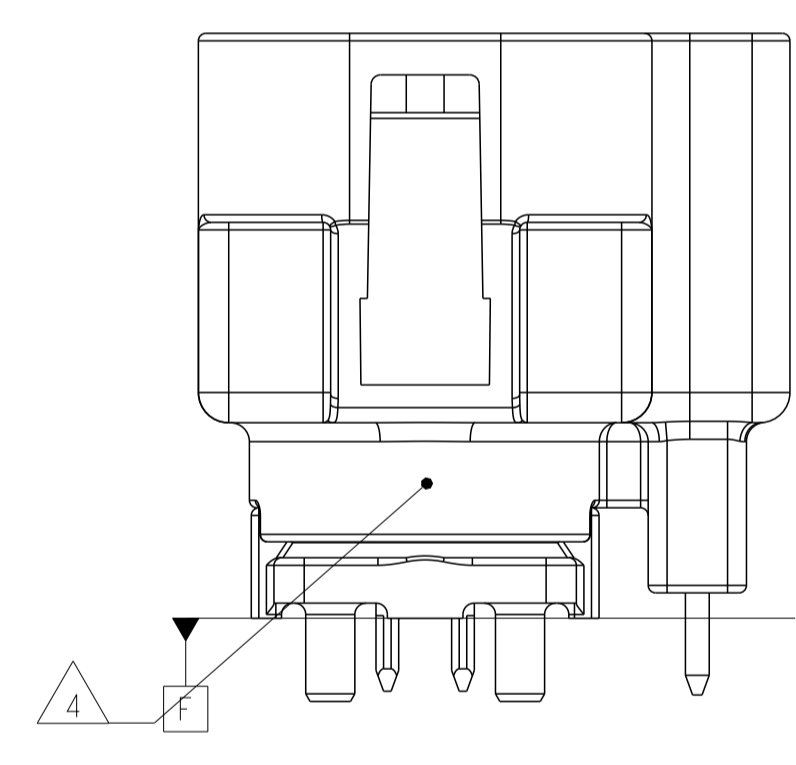
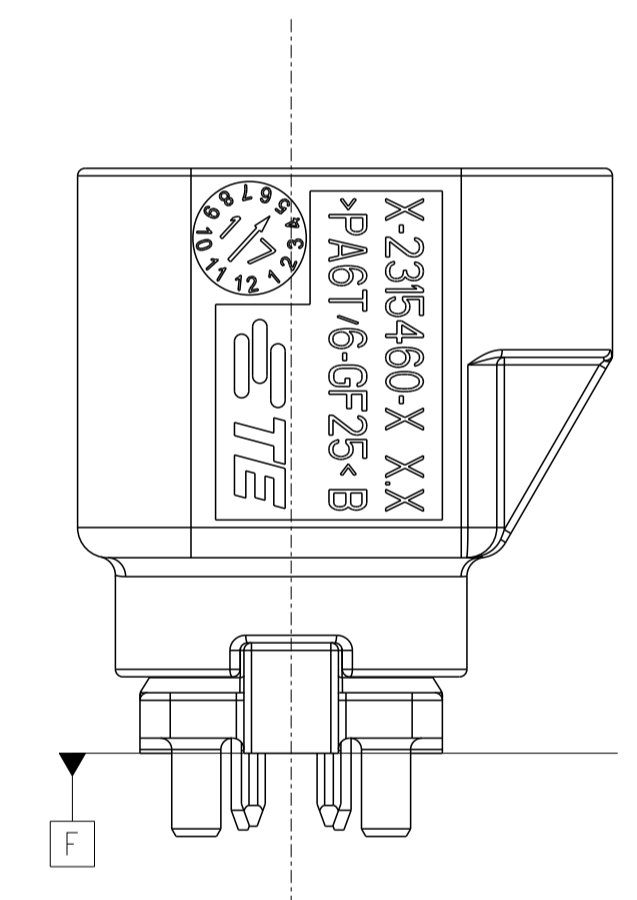
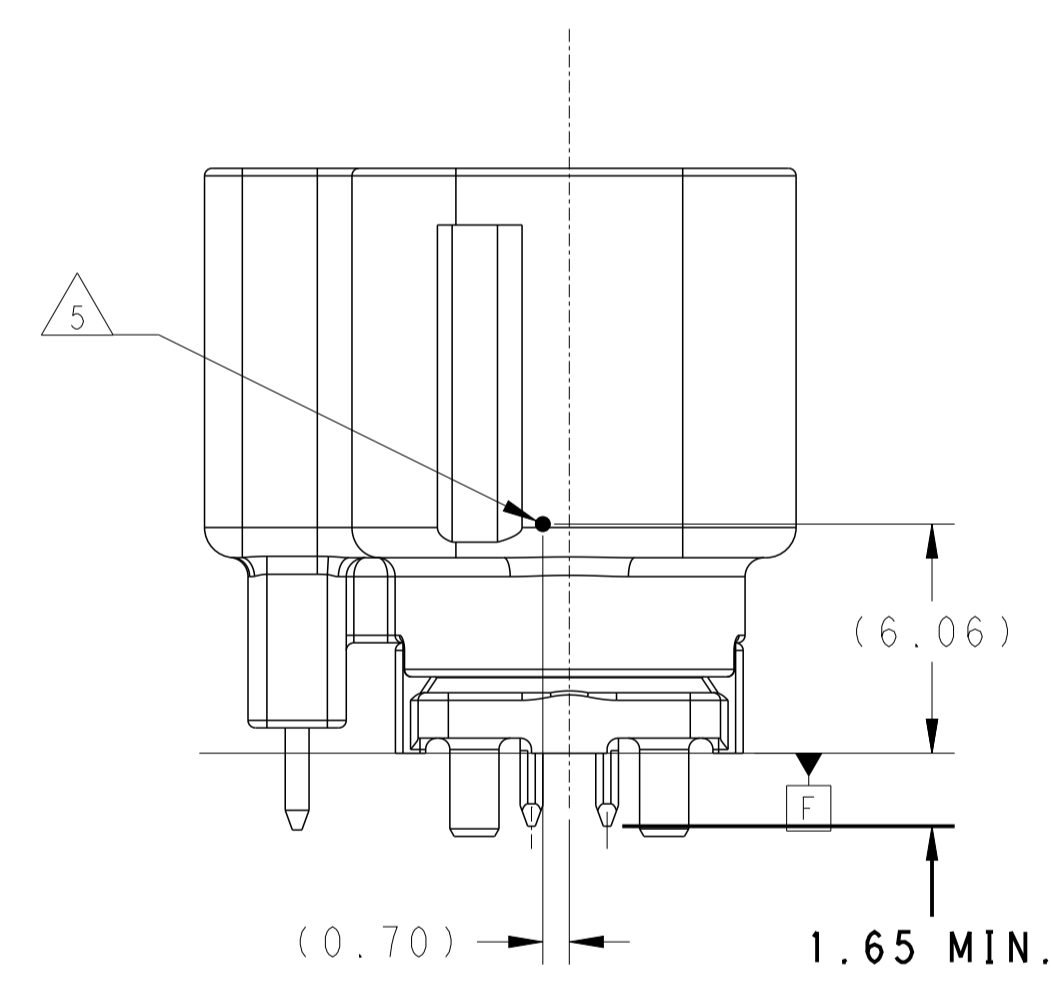
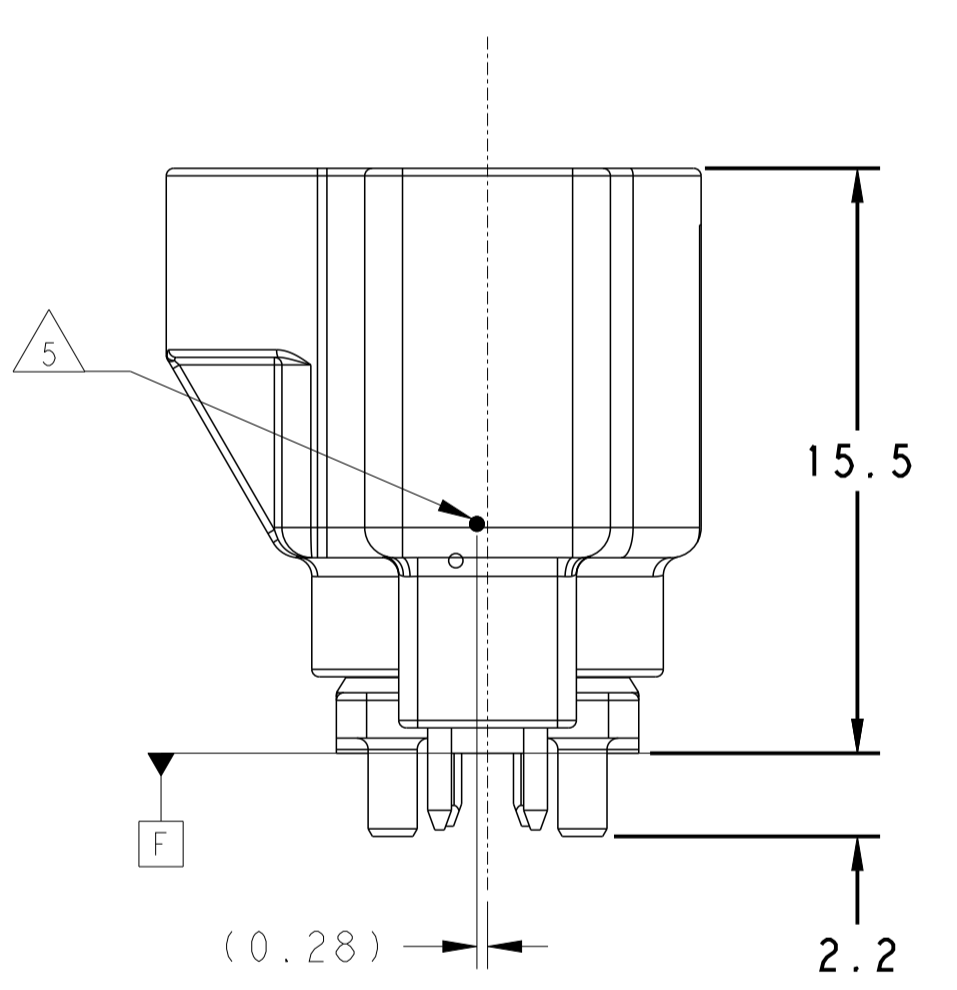
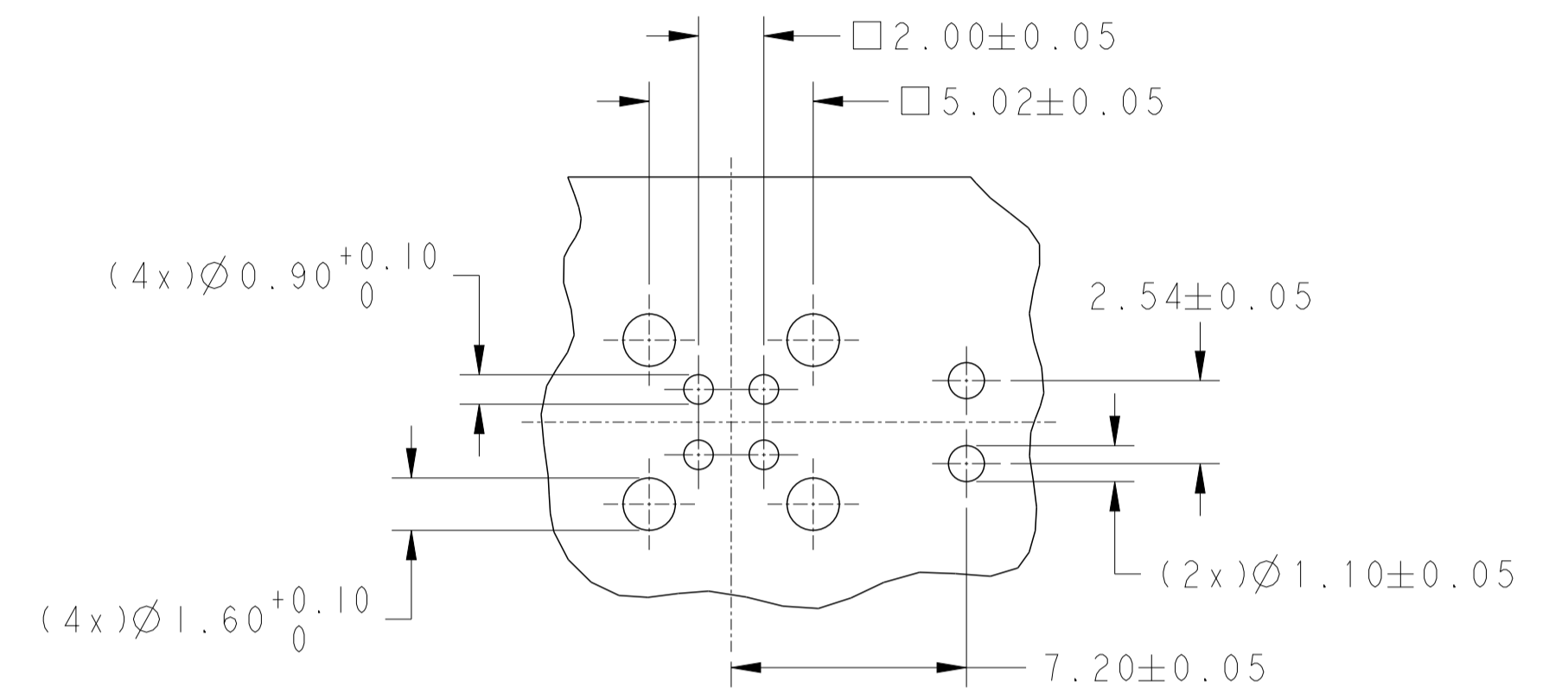
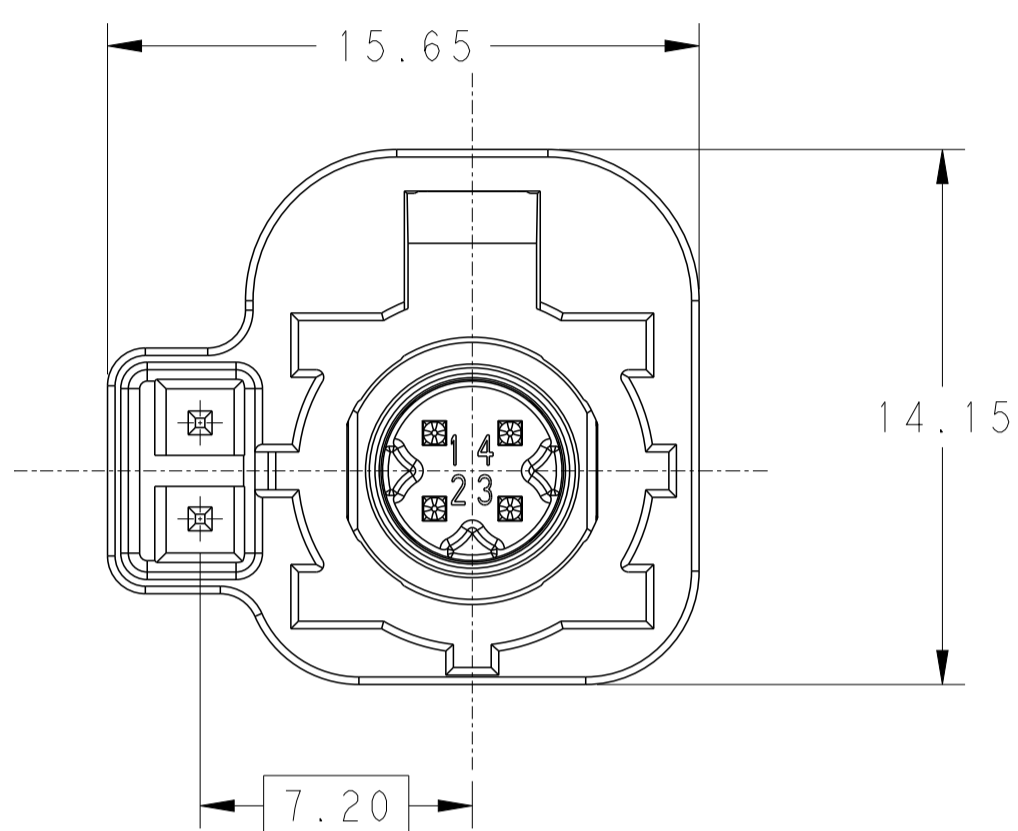


| REVISIONS | | | | |
|-----------|------|-----------------|---------|-------|
| P. | LTN. | DESCRIPTION | DATE | APPV. |
| A | | INITIAL RELEASE | 20AUG17 | F.P. |
| A1 | | ECR-18-011273 | 18JUL18 | B.Z |
| A2 | | ECN-23-221302 | 11JUL23 | M.X |



- 1 HSD INTERFACE DESIGN ARE LEFT TO TE CONNECTIVITY
- 2 ALL DIMENSIONS IN BRACKETS () FOR INFORMATION ONLY
- 3 PACKAGING: TAPE AND REEL
- 4 MARKING OF 100% TEST PASSED
- 5 CENTER OF GRAVITY

AS SHOWN 2315239-9, CODING Z



SCALE 2:1

| QTY | CODE | DESCRIPTION | MATERIAL | FINISH COLOR, SIMILAR RAL | ITEM NO. |
|-----|------|----------------|----------|---|----------|
| 2 | | MOS PIN | CuSn4 | TIN PLATING | 5 |
| 1 | | SHIELDING BODY | Zn ALLOY | SOLDER SIDE: TIN PLATING. INTERFACE SIDE(OUTER CONTACT): TIN PLATING. | 4 |
| 4 | | CONTACT PIN | CuSn4 | SOLDER SIDE: TIN PLATING. INTERFACE SIDE: GOLD PLATING | 3 |
| 1 | | CAVITY BLOCK | PA4T | BLACK | 2 |
| | | | | WATER BULE / 5021 | 1 |
| | | | | NUT BROWN / 8011 | |
| | | | | LEAF GREEN / 6002 | |
| | | | | CLARET VIOLET / 4004 | |
| | | | | SIGNAL BLUE / 5005 | |
| | | | | CREAM WHITE / 9001 | |
| | | | | JET BLACK / 9005 | |

| QUANTITY | CODE | DESCRIPTION | MATERIAL | FINISH COLOR, SIMILAR RAL | ITEM NO. |
|-----------------------------|------|-------------|----------|---------------------------|----------|
| 0-1 0-2 0-3 0-4 0-5 0-6 0-9 | | | | ASSY NO. X-2315239-Y | |
| A B C D E F Z | | | | ASSY CODE | |
| 1 1 1 1 1 1 1 | | | | REVISION | |

| | | | |
|--|------------|------------------------|-------------------------------------|
| THIS DRAWING IS A CONTROLLED DOCUMENT. | | OWN: ML XU 11JUL2023 | TE Connectivity |
| DIMENSIONS: | | CHK: D. ZHU 11JUL2023 | |
| TOLERANCES UNLESS OTHERWISE SPECIFIED: | | APPV: F. PAN 11JUL2023 | NAME: HSD HEADER 180DEG 6POS. ASSY. |
| 0 PLC ± | 1 PLC ±0.5 | PRODUCT SPEC | 108-101388 |
| 2 PLC ±0.5 | 3 PLC ± | APPLICATION SPEC | |
| 4 PLC ± | ANGLES ± | SIZE | A1 |
| MATERIAL | FINISH | WEIGHT | SCALE 5:1 |
| | | | SHEET 1 OF 1 |
| CUSTOMER DRAWING | | REV A2 | |