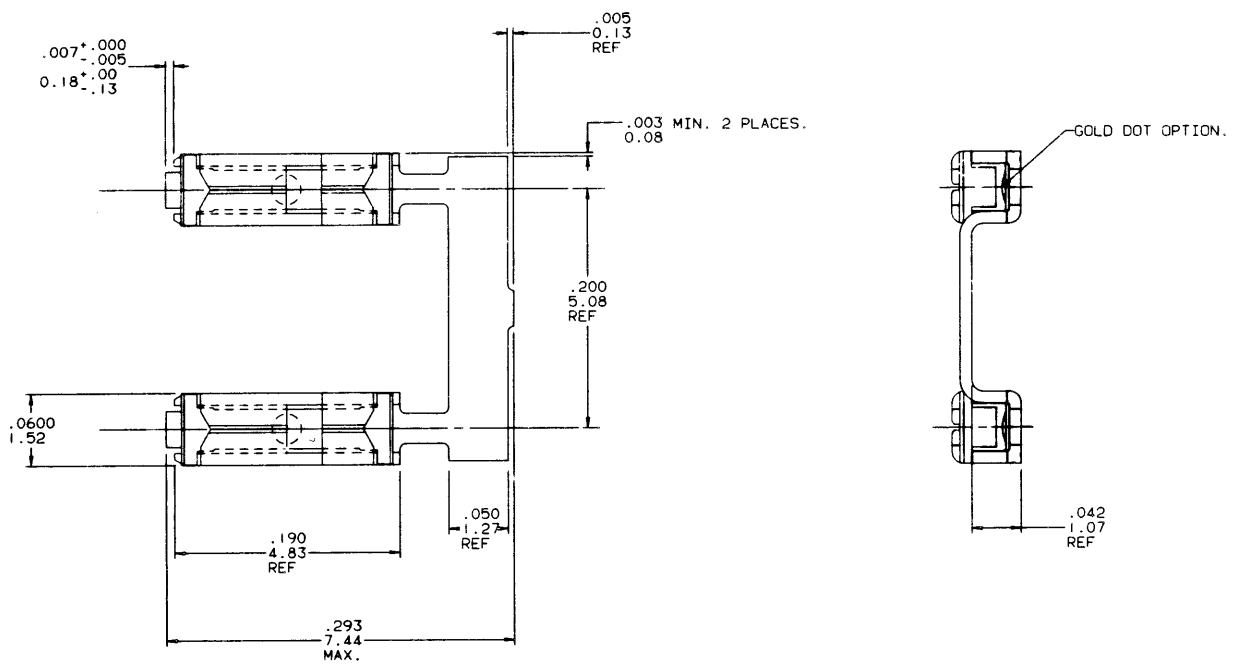


PRODUCT NO	TERMINAL BODY	TERMINAL SPRING
75800-001	1/4 HARD BRASS WITH GOLD FLASH AND 40 μ /1.02 μ Au IN CONTACT AREA.	.0048/.122 THICK HEAT TREATED BE-CU WITH GOLD FLASH.
75800-002	1/4 HARD BRASS WITH TIN-LEAD PLATING.	.0048/.122 THICK HEAT TREATED BE-CU WITH TIN PLATING.
75800-003	O B S O L E T E	
75800-004	1/4 HARD Cu Ni WITH .001/.03 MIN THICK GOLD DOT.	.0048/.122 THICK HEAT TREATED BE-CU WITH GOLD FLASH.

REVISIONS			
REV	DESCRIPTION	BY	DATE
A	RELEASE-REDRAW	JGS	5/6/91



SHEET INDEX		ISSUE A											CUSTOMER COPY	DuPont Electronics		DU PONT		
SH NO 1													CODE IDENT 22526	DATE 5/6/91		TITLE MINI JUMP TERMINAL .200 C.C.		FORM 5 2848C REV. 12/89
MODEL I		DO NOT SCALE DRAWING		TOLERANCE UNLESS OTHERWISE NOTED		INCH/MM		MATERIAL		DR J. SHREINER		DATE 5/6/91		ENGR M. HAHN		5/6/91		
THIRD ANGLE PROJECTION		LINEAR		.001/.005 / .001/.13		FINISH		ENGR M. HAHN		5/6/91		SCALE 20/1		SIZE D		DWG NO 75800		
FABULATION SHEETS REQUIRED		YES NO		INCH MM		ANGLES 0° ± 2°		APPD M. HAHN		5/6/91		CAD		SHEET 1 OF 1				
<small>NOTE: This print is the property of and contains proprietary designs of THE DUPONT COMPANY. No part of the design shown on this print may be used in any way without the written consent of DUPONT ELECTRONICS, New Cumberland, PA.</small>																		