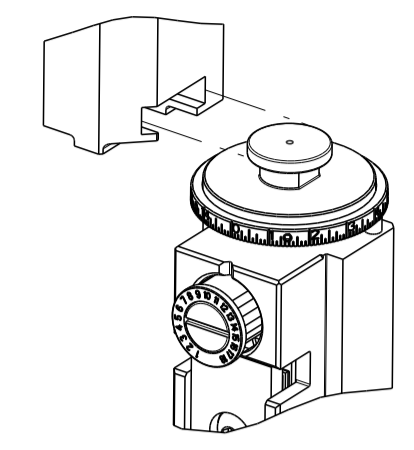


| PART NUMBER | REVISION | DESCRIPTION | FEED TYPE |
|-------------|----------|----------------------------------|------------|
| 2266150-1 | C | FINE CRIMP HEIGHT ADJUST | MECHANICAL |
| 2266150-2 | C | FINE CRIMP HEIGHT ADJUST | PNEUMATIC |
| 7-2266150-1 | C | MECHANICAL AND CRIMP TOOLING KIT | MECHANICAL |
| 7-2266150-2 | C | PNEUMATIC AND CRIMP TOOLING KIT | PNEUMATIC |
| 7-2266150-7 | A | CRIMP TOOLING KIT | - |

ATLANTIC VERSION TERMINATOR INTERFACE ADAPTER



| APPLICATOR DATA | | |
|-----------------|----------------|------|
| CRIMP | SIZE | TYPE |
| WIRE | 1.40 mm [.055] | F |
| INSUL | 1.78 mm [.070] | F |

APPLICATOR INSTRUCTIONS
408-35042

| TERMINAL DATA: TE TERMINAL | | TE CRIMP SPECIFICATION | |
|--|-------------|---------------------------|-------------|
| TERMINAL NAME: AMP MODU MOD IV REC, SHORT POINT OF CONTACT | | | |
| WIRE STRIP LENGTH | | INSULATION DIAMETER RANGE | |
| 3.58-4.78 mm [.141-.188 IN] | | ∅ 1.60mm [.063 IN] MAX | |
| TERMINAL APPLICATION SPECIFICATION | 114-25003 | | |
| TERMINALS APPLIED | | | |
| TE TERMINAL | TE TERMINAL | TE TERMINAL | TE TERMINAL |
| 167418-1 | 167418-4 | | |

| WIRE SIZE | CRIMP HEIGHT mm [INCH] | CRIMP HEIGHT REFERENCE SETTING |
|-------------------|----------------------------|--------------------------------|
| 20 AWG OR 0.50mm2 | 0.89+/-0.05 [.035+/- .002] | 6.0 |
| 22 AWG OR 0.35mm2 | 0.79+/-0.05 [.031+/- .002] | 7.0 |
| 24 AWG | 0.69+/-0.05 [.027+/- .002] | 8.5 |

- RECOMMENDED SPARE PARTS
- REFER TO SUPPLIED INSTRUCTION SHEET FOR CLEANING, LUBRICATION AND STORAGE OF APPLICATOR.
- APPLY PART NUMBER 2-23419-6 LOCTITE TO THREADS OF ITEM 242.
- CRIMP HEIGHT REFERENCE SETTING WAS THE SETTING USED WHEN THE APPLICATOR WAS QUALIFIED AT THE FACTORY. ADJUSTMENT MAY BE NECESSARY WHEN RUNNING APPLICATOR IN THE FIELD.
- 5. UNLESS SPECIFIED OTHERWISE TORQUE VALUES SHALL BE USED PER DOCUMENT, 101-35000.
- TERMINAL LUBRICANT IS RECOMMENDED.

***WARNING**
ON INSTALLATION, SET WIRE DISC TO CRIMP HEIGHT REFERENCE SETTING FOR LARGEST WIRE SIZE. CRIMP HEIGHT REFERENCE SETTINGS GREATER THAN THE VALUE SHOWN MAY CAUSE DAMAGE TO THE CRIMP TOOLING. REFER TO THE INSTRUCTION SHEET FOR PROPER SETUP AND ADJUSTMENTS.

| LOC | DIST | REVISIONS | | | | | |
|-----|------|-----------|-----|---------------|-----------|-----|------|
| A | 66 | P | LTN | DESCRIPTION | DATE | DWN | APVD |
| | | A | | RELEASED | 02JAN2014 | KH | UG |
| | | A1 | | ECR-14-013851 | 17SEP2014 | KH | JT |
| | | B | | ECR-18-018686 | 28NOV2018 | TB | CT |
| | | C | | ECR-23-176289 | 23MAY2023 | TB | TE |

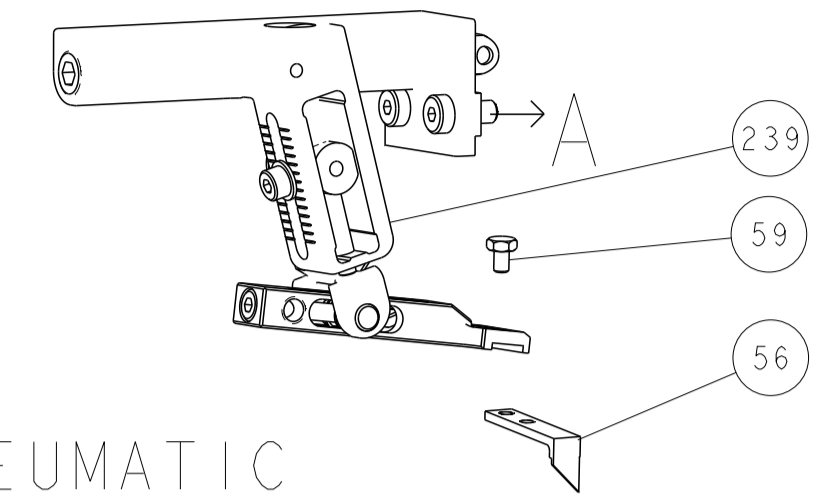
| | | | | | | | | |
|---|-----|-----|-----|-----|-------------|-------------------------------------|-------------------------------|---------|
| - | 1 | 1 | 1 | 1 | 7-18023-7 | SCR, SKT HD CAP M3 X 4.0 | 283 | |
| - | 1 | 1 | 1 | 1 | 2280441-1 | INSERT, SHEAR | 282 | |
| - | 1 | - | 1 | - | 2119641-1 | FEED CAM, AIR FEED | 248 | |
| - | 1 | 1 | 1 | 1 | 2119082-9 | CAM, SNAIL, INSULATION ADJUSTMENT | 244 | |
| - | 1 | 1 | 1 | 1 | 2079764-1 | WASHER, WAVE SPRING, CREST-TO-CREST | 243 | |
| - | 1 | 1 | 1 | 1 | 2119083-1 | RETAINER, INSULATION DIAL | 242 | |
| - | 1 | 1 | 1 | 1 | 7-18023-7 | SCR, SKT HD CAP M3 X 4.0 | 241 | |
| - | - | 1 | - | 1 | 2119580-1 | MECHANICAL FEED ASSEMBLY | 239 | |
| - | 1 | - | 1 | - | 2844940-1 | AIR FEED MODULE | 238 | |
| - | 1 | 1 | 1 | 1 | 1-356885-4 | STOP, SHEAR | 237 | |
| - | REF | REF | REF | REF | 994970-2 | COUNTER, MAGNETIC | 164 | |
| - | 1 | 1 | 1 | 1 | 2119955-1 | ASSY, LUBRICATOR, SIDE FEED | 113 | |
| - | 1 | 1 | 1 | 1 | 2844908-1 | SCREW, LOCKING | 99 | |
| - | 1 | 1 | 1 | 1 | 2844907-1 | POST, LOCKING | 98 | |
| - | 1 | 1 | 1 | 1 | 455888-4 | SPACER, CRIMPER | 82 | |
| - | 1 | 1 | 1 | 1 | 3-240641-0 | SPACER | 81 | |
| - | 1 | 1 | 1 | 1 | 1803607-3 | DOCUMENTATION PACKAGE | 71 | |
| - | 1 | 1 | 1 | 1 | 2119740-1 | TAG, IDENTIFICATION | 67 | |
| - | 2 | 2 | 2 | 2 | 2168078-1 | SCREW, DRIVE, RH, RoHS, 2 x .188 | 66 | |
| - | 1 | 1 | 1 | 1 | 2168083-2 | SCR, SKT HD CAP, RoHS, M4 X 8.0 | 60 | |
| - | 1 | 1 | 1 | 1 | 5-18022-5 | SCR, HEX HD CAP, M4 X 6.0 | 59 | |
| - | 1 | 1 | 1 | 1 | 1338685-1 | PAWL, FEED | 56 | |
| - | 4 | 4 | 4 | 4 | 2168083-3 | SCR, SKT HD CAP, RoHS, M4 X 12.0 | 54 | |
| - | 2 | 2 | 2 | 2 | 2-2168083-5 | SCR, SKT HD CAP, RoHS, M4 X 14 | 53 | |
| - | 1 | 2 | 1 | 2 | 18023-9 | SCR, SKT HD CAP M4 X 6.0 | 49 | |
| - | - | 1 | - | 1 | 2119652-1 | FEED CAM, PRE FEED | 48 | |
| - | - | 1 | - | 1 | 2119653-1 | FEED CAM, POST FEED | 47 | |
| - | 1 | 1 | 1 | 1 | 1803583-9 | APPLICATOR BASIC ASSEMBLY, SF | 46 | |
| - | 1 | 1 | 1 | 1 | 1803515-1 | RAM ASSEMBLY, SF ATLANTIC | 44 | |
| - | 1 | 1 | 1 | 1 | 1803602-1 | SCR, BHSC, RoHS (M8 X 25) | 41 | |
| - | 2 | 2 | 2 | 2 | 2079383-5 | SCR, BHSC, RoHS (M4 X 20) | 33 | |
| - | 2 | 2 | 2 | 2 | 2-2844962-3 | SPACER, CYLINDRICAL, STRIP GUIDE | 30 | |
| - | 1 | 1 | 1 | 1 | 2844992-1 | ASSEMBLY, STRIP GUIDE | 29 | |
| - | 1 | 1 | 1 | 1 | 1-455888-0 | SPACER, CRIMPER | 28 | |
| - | 1 | 1 | 1 | 1 | 1320928-2 | STRIP GUIDE | 24 | |
| - | 1 | 1 | 1 | 1 | 2168083-2 | SCR, SKT HD CAP, RoHS, M4 X 8.0 | 21 | |
| - | 3 | 3 | 3 | 3 | 1-18028-2 | WASHER, FLAT, REG M4 | 20 | |
| - | 1 | 1 | 1 | 1 | 2119533-1 | STRIPPER, SIDE FEED | 19 | |
| - | 1 | 1 | 1 | 1 | 690518-1 | HOLD DOWN, TERMINAL | 18 | |
| - | 1 | 1 | 1 | 1 | 690463-1 | FLOATING SHEAR, REAR | 17 | |
| - | 2 | 2 | 2 | 2 | 1-2168083-1 | SCR, SKT HD CAP, RoHS, M3 X 6 | 16 | |
| - | 1 | 1 | 1 | 1 | 690691-4 | PLATE, REAR SHEAR | 15 | |
| - | 1 | 1 | 1 | 1 | 2119862-1 | SHEAR HOLDER, REAR | 14 | |
| - | 1 | 1 | 1 | 1 | 2119806-1 | INSERT, SHEAR | 13 | |
| - | 2 | 2 | 2 | 2 | 3-22280-3 | SPRING, COMPRESSION | 12 | |
| - | 1 | 1 | 1 | 1 | 1-356885-4 | STOP, SHEAR | 11 | |
| - | 1 | 1 | 1 | 1 | 2119805-1 | SHEAR HOLDER, FRONT | 10 | |
| - | 1 | 1 | 1 | 1 | 1803095-1 | FLOATING SHEAR, FRONT | 9 | |
| - | 1 | 2 | 2 | 1 | 1 | 2-1333201-6 | ANVIL, COMBINATION | 8 |
| - | - | - | - | - | - | - | 7 | |
| - | 1 | 1 | 1 | 1 | 690468-2 | DEPRESSOR SHEAR, REAR | 6 | |
| - | 1 | 1 | 1 | 1 | 2119757-8 | DEPRESSOR, SHEAR | 5 | |
| - | 1 | 1 | 1 | 1 | 238011-7 | BLOCK, CRIMPER SPACER | 4 | |
| - | 1 | 2 | 2 | 1 | 1 | 2-2119582-0 | CRIMPER, INSULATION F PREMIUM | 3 |
| - | 1 | 1 | 1 | 1 | 455888-1 | SPACER, CRIMPER | 2 | |
| - | 1 | 2 | 2 | 1 | 1 | 3-456402-1 | CRIMPER, WIRE PREMIUM | 1 |
| - | 77 | 72 | 71 | 2 | -1 | PART NO | DESCRIPTION | ITEM NO |

ATLANTIC VERSION
Shown on sheets 1 of 4 & 2 of 4
(Pacific version shown on sheets 3 of 4 & 4 of 4)

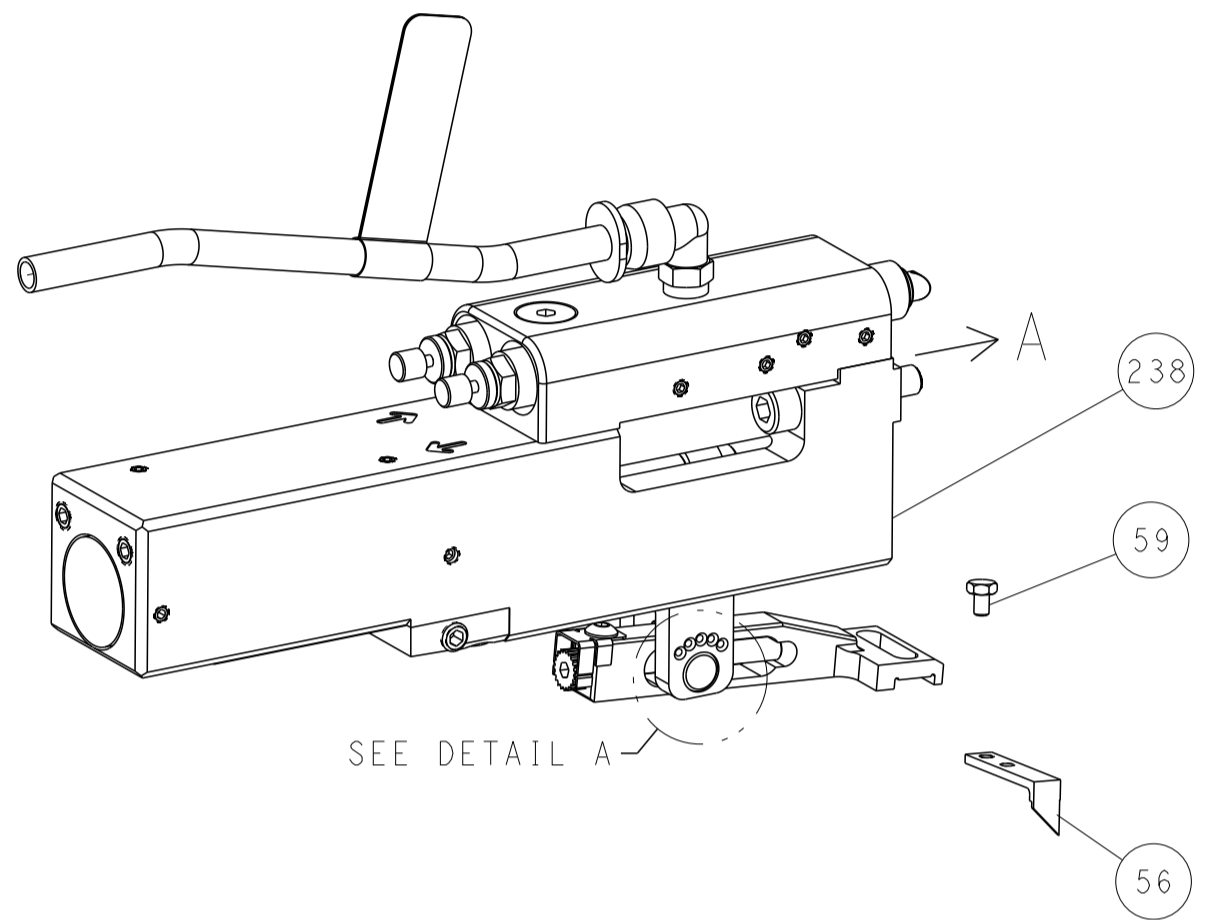
| | | | | | | | | | |
|--|---|--|-------|--|--|-------------------------------------|--|--|--|
| DIMENSIONS: | | TOLERANCES UNLESS OTHERWISE SPECIFIED: | | DWN H. HUANG CHK L. ZHANG APVD J. GUO | | 21NOV2013 21NOV2013 21NOV2013 | | TE Connectivity Harrisburg, PA 17105-3608 | |
| mm | 0 PLC ± 1 PLC ± 2 PLC ± 3 PLC ± 4 PLC ± | mm | ± | NAME | | Ocean Side Feed Applicator | | RESTRICTED TO | |
| MATERIAL | FINISH | WEIGHT | SCALE | SIZE | | CAGE CODE | | DRAWING NO | |
| | | | 1:2 | A1 | | 00779 | | C=2266150 | |
| Customer Accessible Production Drawing | | | | SHEET 1 OF 4 | | REV C | | | |

| LOC | | DIST | | REVISIONS | | | |
|-----|----|------|-----|-------------|------|-----|------|
| A | 66 | P | LYN | DESCRIPTION | DATE | DWN | APVD |
| | | - | | SEE SHEET 1 | | | |
| | | | | | | | |
| | | | | | | | |

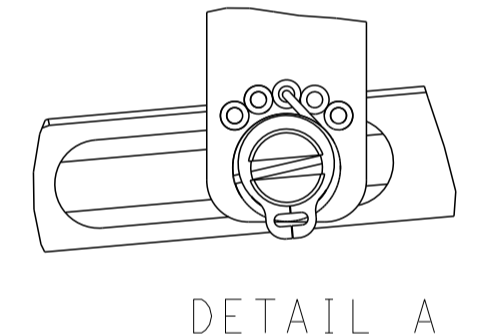
FEED TYPE MECHANICAL



PNEUMATIC

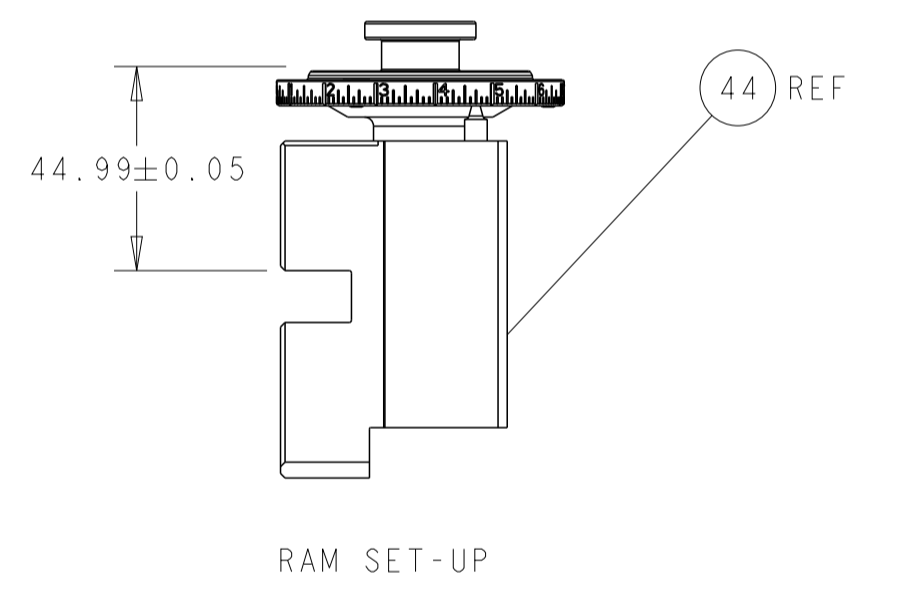
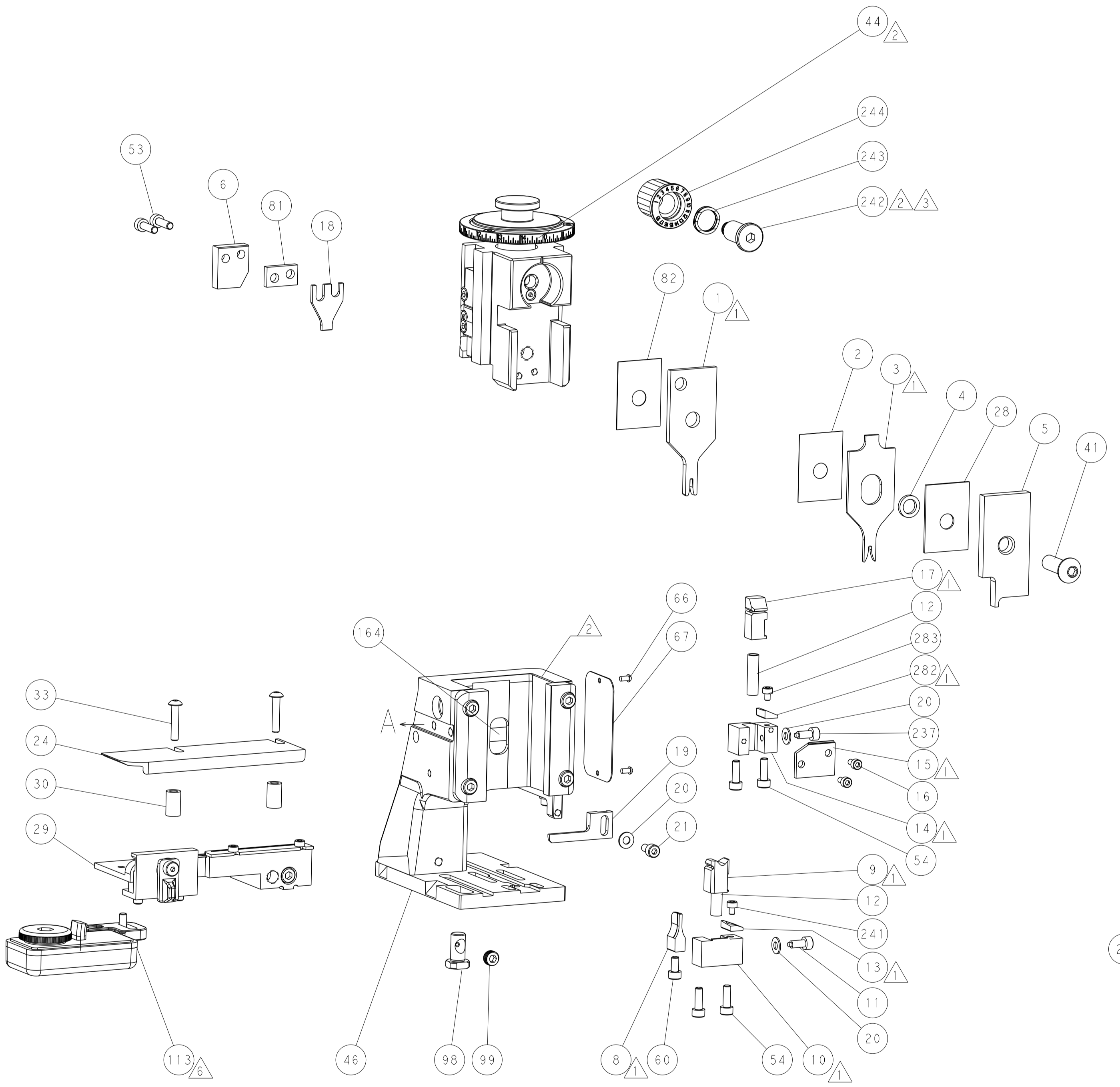
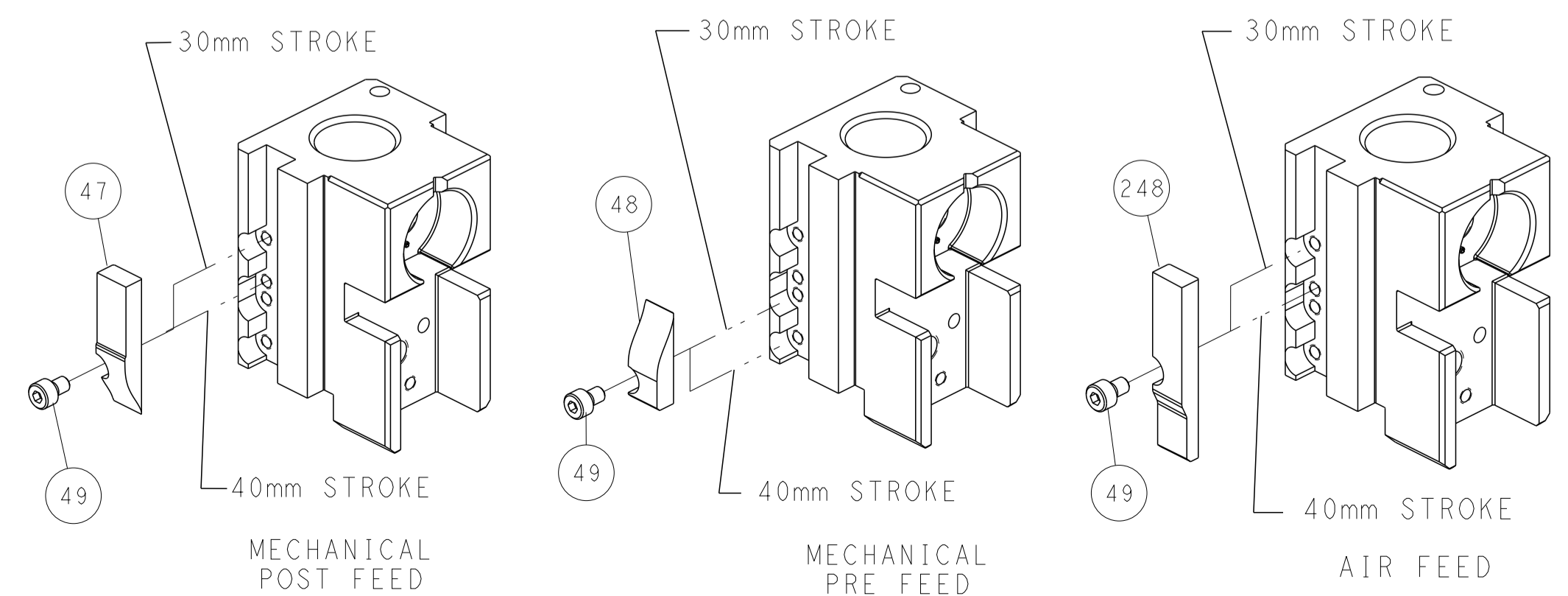


FEED SPRING SETTING POSITION
(SHOWN FROM REAR SIDE)

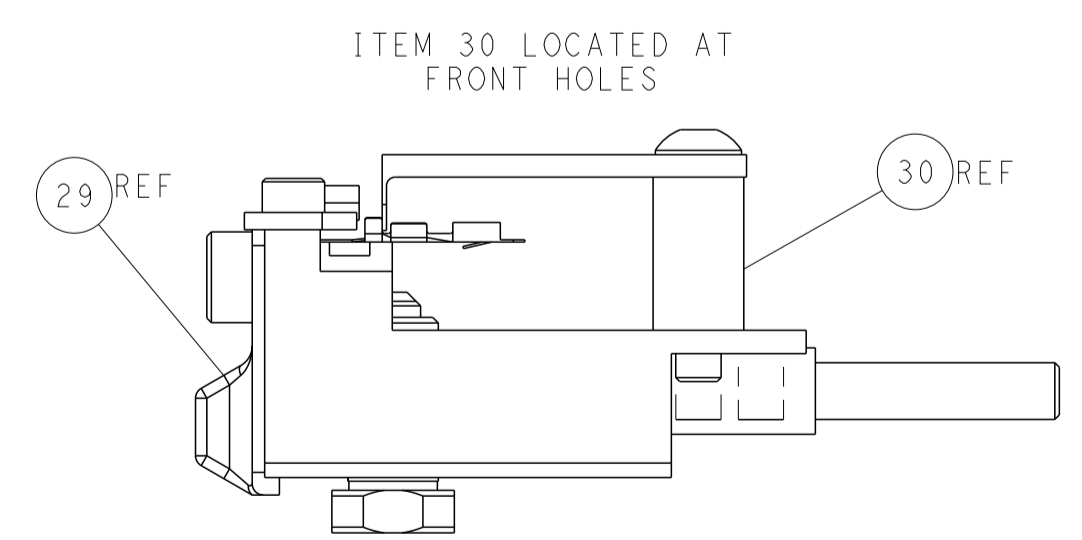


DETAIL A

CAM POSITIONS



RAM SET-UP



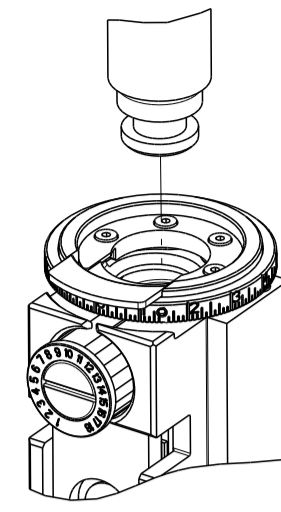
FEED TRACK POSITION GUIDE BY INSULATION BARREL

ATLANTIC VERSION
 Shown on sheets 1 of 4 & 2 of 4
 (Pacific version shown on sheets 3 of 4 & 4 of 4)

| | | | | | | | |
|-------------|----------|--|---------|-------------------------|---------|--|--|
| DIMENSIONS: | | TOLERANCES UNLESS OTHERWISE SPECIFIED: | | DWN: R. HUANG 21NOV2013 | | TE Connectivity | |
| mm | 0 PLC ± | 1 PLC ± | 2 PLC ± | 3 PLC ± | 4 PLC ± | Harrisburg, PA 17105-3608 | |
| | ANGLES ± | | | CHK: L. ZHANG 21NOV2013 | | NAME: Ocean Side Feed Applicator | |
| MATERIAL: | FINISH: | | | APVD: J. GUO 21NOV2013 | | SIZE: CAGE CODE: DRAWING NO: RESTRICTED TO | |
| | | | | PRODUCT SPEC: | | A1 00779 ©=2266150 | |
| | | | | APPLICATION SPEC: | | Customer Accessible Production Drawing | |
| | | | | WEIGHT: | | SCALE: 1:2 SHEET 2 OF 4 REV C | |

| PART NUMBER | REVISION | DESCRIPTION | FEED TYPE |
|-------------|----------|--------------------------|------------|
| 2-2266150-1 | C | FINE CRIMP HEIGHT ADJUST | MECHANICAL |
| 2-2266150-2 | C | FINE CRIMP HEIGHT ADJUST | PNEUMATIC |
| 7-2266150-7 | A | CRIMP TOOLING KIT | - |

PACIFIC VERSION TERMINATOR
INTERFACE ADAPTER



| APPLICATOR DATA | | |
|-----------------|----------------|------|
| CRIMP | SIZE | TYPE |
| WIRE | 1.40 mm [.055] | F |
| INSUL | 1.78 mm [.070] | F |

APPLICATOR INSTRUCTIONS
408-35042

| TERMINAL DATA: TE TERMINAL | | TE CRIMP SPECIFICATION | |
|--|-------------|---------------------------|-------------|
| TERMINAL NAME: AMP MODU MOD IV REC, SHORT POINT OF CONTACT | | | |
| WIRE STRIP LENGTH | | INSULATION DIAMETER RANGE | |
| 3.58-4.78 mm [1.41-.188 IN] | | 1.60mm [1.063 IN] MAX | |
| TERMINAL APPLICATION SPECIFICATION | 114-25003 | | |
| TERMINALS APPLIED | | | |
| TE TERMINAL | TE TERMINAL | TE TERMINAL | TE TERMINAL |
| 167418-1 | 167418-4 | | |

| WIRE SIZE | CRIMP HEIGHT mm [INCH] | CRIMP HEIGHT REFERENCE SETTING |
|-------------------------------|-----------------------------|--------------------------------|
| 20 AWG OR 0.50mm ² | 0.89+/-0.05 [1.035+/-0.002] | 6.0 |
| 22 AWG OR 0.35mm ² | 0.79+/-0.05 [1.031+/-0.002] | 7.0 |
| 24 AWG | 0.69+/-0.05 [1.027+/-0.002] | 8.5 |

- RECOMMENDED SPARE PARTS
- REFER TO SUPPLIED INSTRUCTION SHEET FOR CLEANING, LUBRICATION AND STORAGE OF APPLICATOR.
- APPLY PART NUMBER 2-23419-6 LOCTITE TO THREADS OF ITEM 242.
- CRIMP HEIGHT REFERENCE SETTING WAS THE SETTING USED WHEN THE APPLICATOR WAS QUALIFIED AT THE FACTORY. ADJUSTMENT MAY BE NECESSARY WHEN RUNNING APPLICATOR IN THE FIELD.
- 5. UNLESS SPECIFIED OTHERWISE TORQUE VALUES SHALL BE USED PER DOCUMENT, 101-35000.
- TERMINAL LUBRICANT IS RECOMMENDED.

***WARNING**
ON INSTALLATION, SET WIRE DISC TO CRIMP HEIGHT REFERENCE SETTING FOR LARGEST WIRE SIZE. CRIMP HEIGHT REFERENCE SETTINGS GREATER THAN THE VALUE SHOWN MAY CAUSE DAMAGE TO THE CRIMP TOOLING. REFER TO THE INSTRUCTION SHEET FOR PROPER SETUP AND ADJUSTMENTS.

| LOC | DIST | REVISIONS | | | | | |
|-----|------|-----------|-----|-------------|------|-----|------|
| A | 66 | P | LTN | DESCRIPTION | DATE | OWN | APVD |
| - | - | - | - | SEE SHEET 1 | - | - | - |

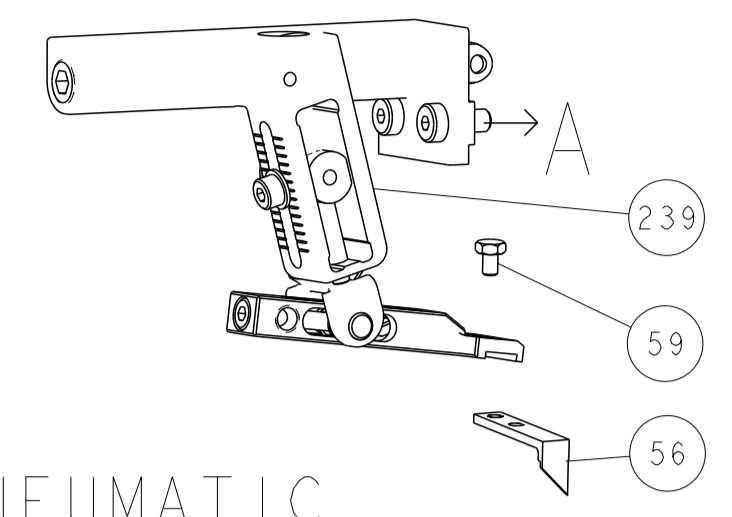
| | | | | | | | |
|--|---|-----|-----|-------------|-------------------------------------|--|-----|
| | - | 1 | 1 | 7-18023-7 | SCR, SKT HD CAP M3 X 4.0 | | 283 |
| | - | 1 | 1 | 2280441-1 | INSERT, SHEAR | | 282 |
| | - | 1 | 1 | 2119082-9 | CAM, SNAIL, INSULATION ADJUSTMENT | | 244 |
| | - | 1 | 1 | 2079764-1 | WASHER, WAVE SPRING, CREST-TO-CREST | | 243 |
| | - | 1 | 1 | 2119083-1 | RETAINER, INSULATION DIAL | | 242 |
| | - | 1 | 1 | 7-18023-7 | SCR, SKT HD CAP M3 X 4.0 | | 241 |
| | - | - | 1 | 2119580-1 | MECHANICAL FEED ASSEMBLY | | 239 |
| | - | 1 | - | 2844940-1 | AIR FEED MODULE | | 238 |
| | - | 1 | 1 | 1-356885-4 | STOP, SHEAR | | 237 |
| | - | REF | REF | 994970-2 | COUNTER, MAGNETIC | | 164 |
| | - | 1 | - | 2119641-2 | FEED CAM, AIR FEED | | 151 |
| | - | 1 | 1 | 2168083-8 | SCR, SKT HD CAP, RoHS, M4 X 16 | | 144 |
| | - | 4 | 4 | 2168083-9 | SCR, SKT HD CAP, RoHS, M4 X 20 | | 143 |
| | - | - | 1 | 2119653-2 | FEED CAM, POST FEED | | 142 |
| | - | 1 | 1 | 1-1803583-0 | APPLICATOR BASIC ASSEMBLY, SF | | 141 |
| | - | 1 | 1 | 1803516-1 | RAM ASSEMBLY, SF PACIFIC | | 140 |
| | - | 1 | 1 | 2119955-1 | ASSY, LUBRICATOR, SIDE FEED | | 113 |
| | - | 1 | 1 | 2844908-1 | SCREW, LOCKING | | 99 |
| | - | 1 | 1 | 2844907-1 | POST, LOCKING | | 98 |
| | - | 1 | 1 | 455888-4 | SPACER, CRIMPER | | 82 |
| | - | 1 | 1 | 3-240641-0 | SPACER | | 81 |
| | - | 1 | 1 | 1803607-3 | DOCUMENTATION PACKAGE | | 71 |
| | - | 1 | 1 | 2119740-1 | TAG, IDENTIFICATION | | 67 |
| | - | 2 | 2 | 2168078-1 | SCREW, DRIVE, RH, RoHS, 2 x .188 | | 66 |
| | - | 1 | 1 | 5-18022-5 | SCR, HEX HD CAP, M4 X 6.0 | | 59 |
| | - | 1 | 1 | 1338685-1 | PAWL, FEED | | 56 |
| | - | 2 | 2 | 2-2168083-5 | SCR, SKT HD CAP, RoHS, M4 X 14 | | 53 |
| | - | 1 | 2 | 18023-9 | SCR, SKT HD CAP M4 X 6.0 | | 49 |
| | - | - | 1 | 2119652-1 | FEED CAM, PRE FEED | | 48 |
| | - | 1 | 1 | 1803602-1 | SCR, BHSC, RoHS (M8 X 25) | | 41 |
| | - | 2 | 2 | 2079383-5 | SCR, BHSC, RoHS (M4 X 20) | | 33 |
| | - | 2 | 2 | 2-2844962-3 | SPACER, CYLINDRICAL, STRIP GUIDE | | 30 |
| | - | 1 | 1 | 2844992-1 | ASSEMBLY, STRIP GUIDE | | 29 |
| | - | 1 | 1 | 1-455888-0 | SPACER, CRIMPER | | 28 |
| | - | 1 | 1 | 1320928-2 | STRIP GUIDE | | 24 |
| | - | 1 | 1 | 2168083-2 | SCR, SKT HD CAP, RoHS, M4 X 8.0 | | 21 |
| | - | 3 | 3 | 1-18028-2 | WASHER, FLAT, REG M4 | | 20 |
| | - | 1 | 1 | 2119533-1 | STRIPPER, SIDE FEED | | 19 |
| | - | 1 | 1 | 690518-1 | HOLD DOWN, TERMINAL | | 18 |
| | - | 1 | 1 | 690463-1 | FLOATING SHEAR, REAR | | 17 |
| | - | 2 | 2 | 1-2168083-1 | SCR, SKT HD CAP, RoHS, M3 X 6 | | 16 |
| | - | 1 | 1 | 690691-4 | PLATE, REAR SHEAR | | 15 |
| | - | 1 | 1 | 2119862-1 | SHEAR HOLDER, REAR | | 14 |
| | - | 1 | 1 | 2119806-1 | INSERT, SHEAR | | 13 |
| | - | 2 | 2 | 3-22280-3 | SPRING, COMPRESSION | | 12 |
| | - | 1 | 1 | 1-356885-4 | STOP, SHEAR | | 11 |
| | - | 1 | 1 | 2119805-1 | SHEAR HOLDER, FRONT | | 10 |
| | - | 1 | 1 | 1803095-1 | FLOATING SHEAR, FRONT | | 9 |
| | 1 | 1 | 1 | 2-1333201-6 | ANVIL, COMBINATION | | 8 |
| | - | - | - | - | - | | 7 |
| | - | 1 | 1 | 690468-2 | DEPRESSOR SHEAR, REAR | | 6 |
| | - | 1 | 1 | 2119757-8 | DEPRESSOR, SHEAR | | 5 |
| | - | 1 | 1 | 238011-7 | BLOCK, CRIMPER SPACER | | 4 |
| | 1 | 1 | 1 | 2-2119582-0 | CRIMPER, INSULATION F PREMIUM | | 3 |
| | - | 1 | 1 | 455888-1 | SPACER, CRIMPER | | 2 |
| | 1 | 1 | 1 | 3-456402-1 | CRIMPER, WIRE PREMIUM | | 1 |

PACIFIC VERSION
Shown on sheets 3 of 4 & 4 of 4
(Atlantic version shown on sheets 1 of 4 & 2 of 4)

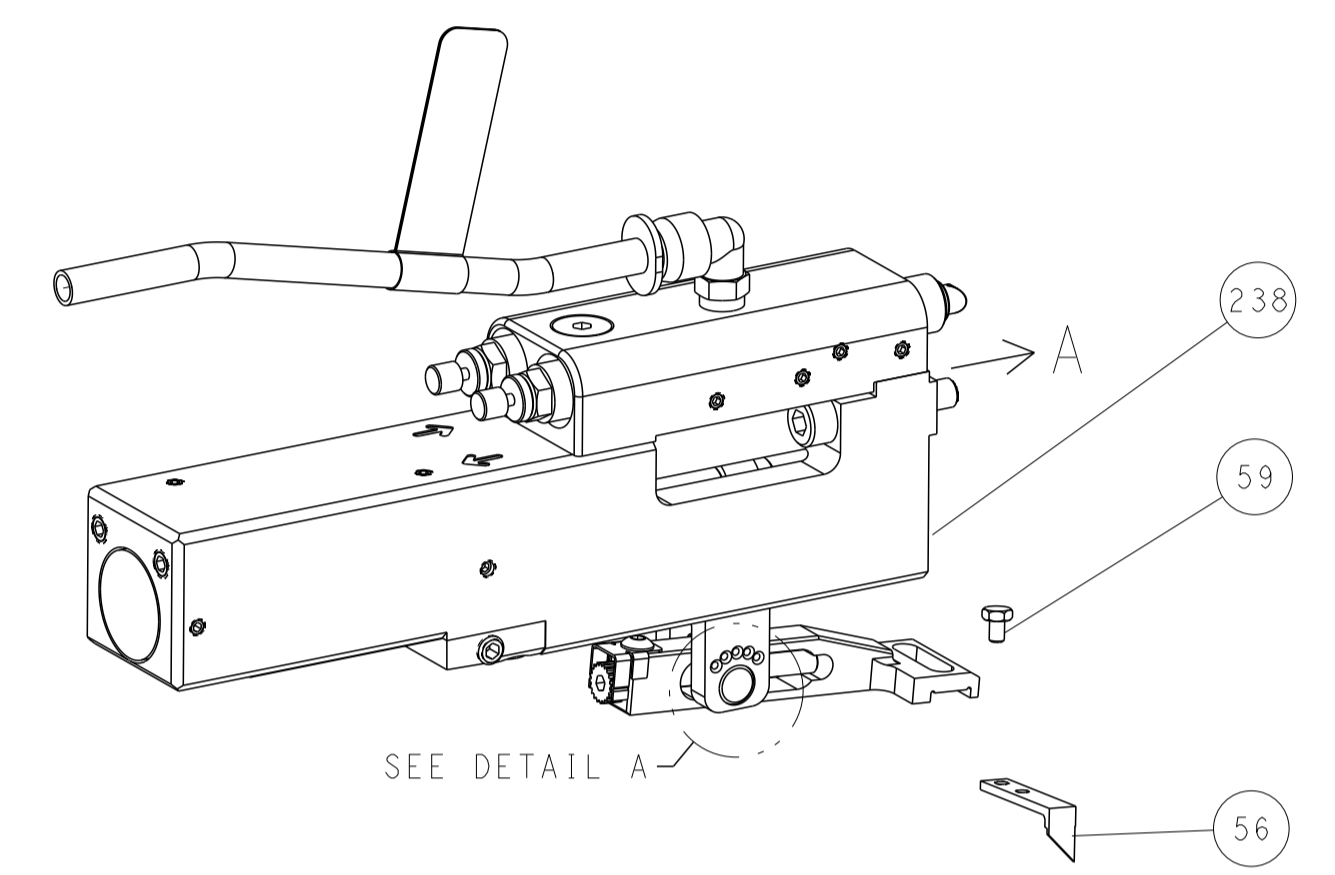
| | | | | |
|--|--|---|-------------------------------------|---|
| <small>THIS DRAWING IS UNPUBLISHED. IT IS THE PROPERTY OF STC CONNECTIVITY CORPORATION. IT IS TO BE KEPT IN CONFIDENTIALITY AND NOT TO BE REPRODUCED OR TRANSMITTED IN ANY FORM OR BY ANY MEANS, ELECTRONIC OR MECHANICAL, INCLUDING PHOTOCOPYING, RECORDING, OR BY ANY INFORMATION STORAGE AND RETRIEVAL SYSTEM. PERMISSION TO COPY OR REPRODUCE THIS DRAWING IN ANY MANNER MUST BE OBTAINED FROM STC CONNECTIVITY CORPORATION.</small> | | DWN H. HUANG CHK L. ZHANG APVD J. GUO | 21NOV2013 21NOV2013 21NOV2013 | TE Connectivity Harrisburg, PA 17105-3608 |
| DIMENSIONS: mm | | TOLERANCES UNLESS OTHERWISE SPECIFIED: 0 PLC ± 1 PLC ± 2 PLC ± 3 PLC ± 4 PLC ± ANGLES ± FINISH | | NAME Ocean Side Feed Applicator |
| MATERIAL: | | WEIGHT: | | SIZE: A1 CAGE CODE: 00779 DRAWING NO: C=2266150 RESTRICTED TO: |
| Customer Accessible Production Drawing | | SCALE: 1:2 | | SHEET 3 OF 4 REV C |

| LOC | DIST | REVISIONS | | | | | |
|-----|------|-----------|-----|-------------|------|-----|------|
| A | 66 | P | LTN | DESCRIPTION | DATE | DWN | APVD |
| | | - | | SEE SHEET 1 | - | - | - |

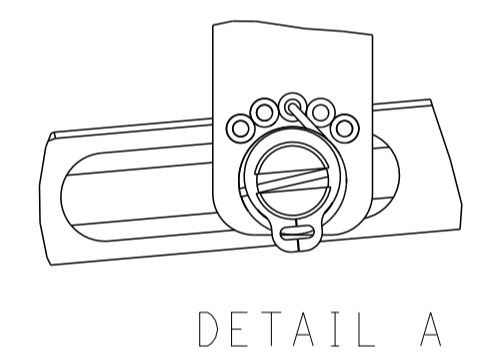
FEED TYPE MECHANICAL



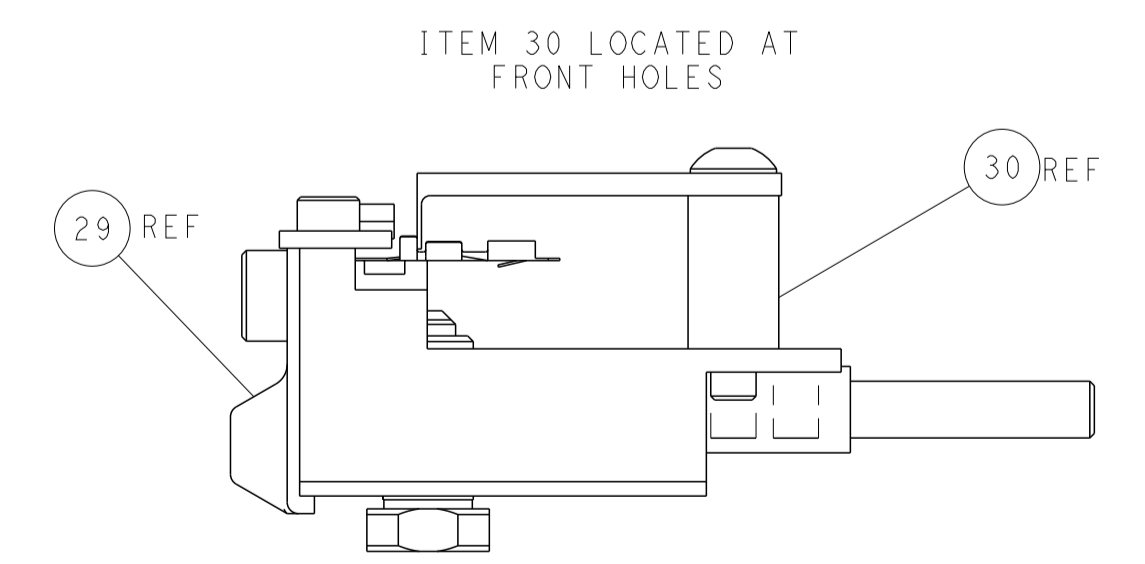
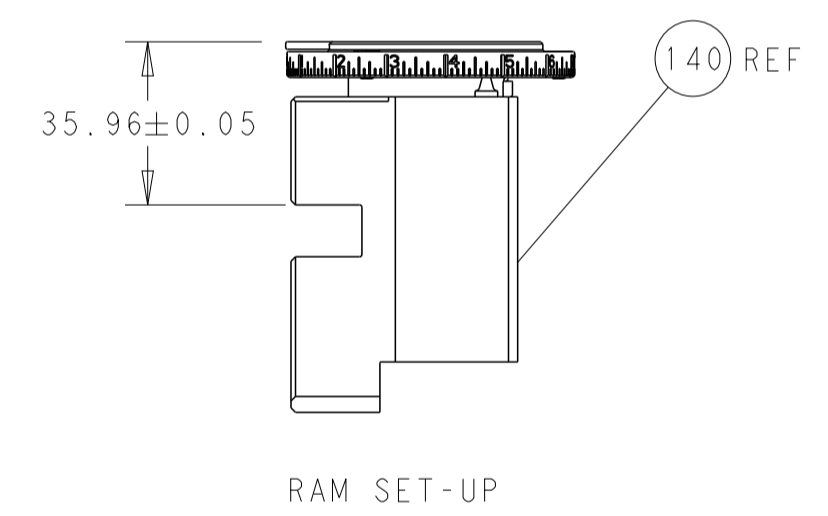
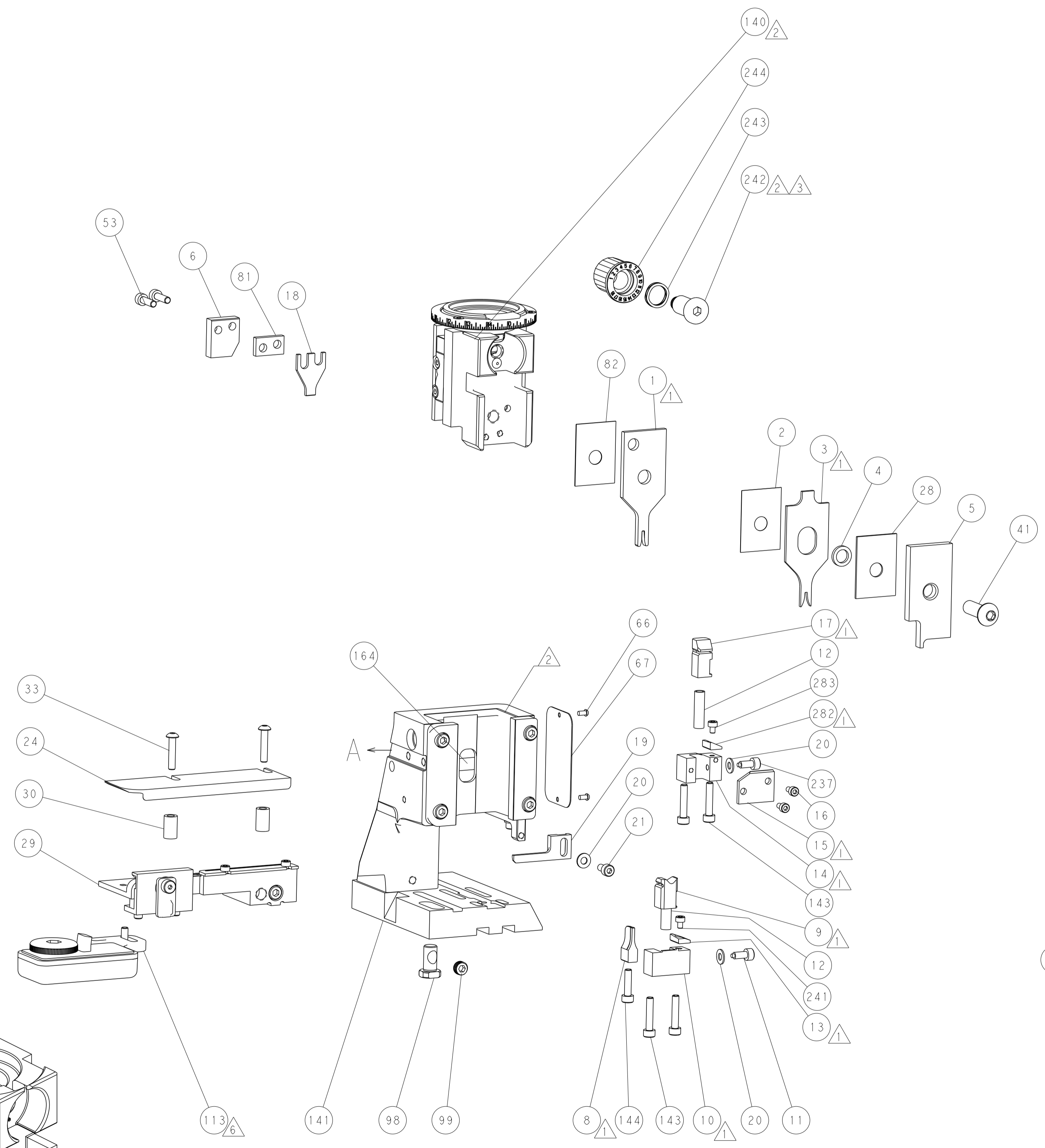
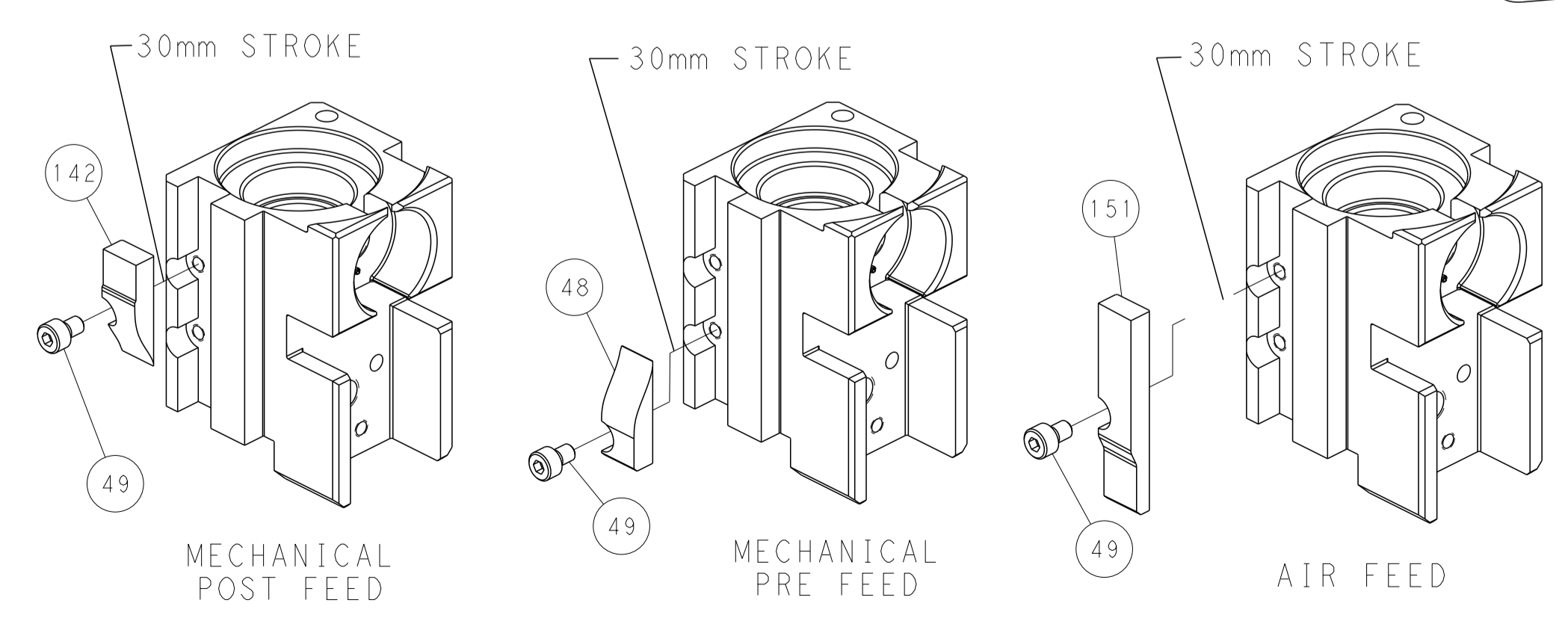
PNEUMATIC



FEED SPRING SETTING POSITION (SHOWN FROM REAR SIDE)



CAM POSITIONS



PACIFIC VERSION
 Shown on sheets 3 of 4 & 4 of 4
 (Atlantic version shown on sheets 1 of 4 & 2 of 4)

| | | | | | | | |
|-----------------------|--|---|--|---|--|---|--|
| DIMENSIONS: mm | | TOLERANCES UNLESS OTHERWISE SPECIFIED: 0 PLC ± 1 PLC ± 2 PLC ± 3 PLC ± 4 PLC ± ANGLES ± FINISH | | DWN R. HUANG 21NOV2013 CHK L. ZHANG 21NOV2013 APVD J. GUO 21NOV2013 PRODUCT SPEC APPLICATION SPEC WEIGHT Customer Accessible Production Drawing | | NAME Ocean Side Feed Applier SIZE CAGE CODE DRAWING NO. A1 00779 C=2266150 SCALE 1:2 SHEET 4 OF 4 REV C | |
|-----------------------|--|---|--|---|--|---|--|