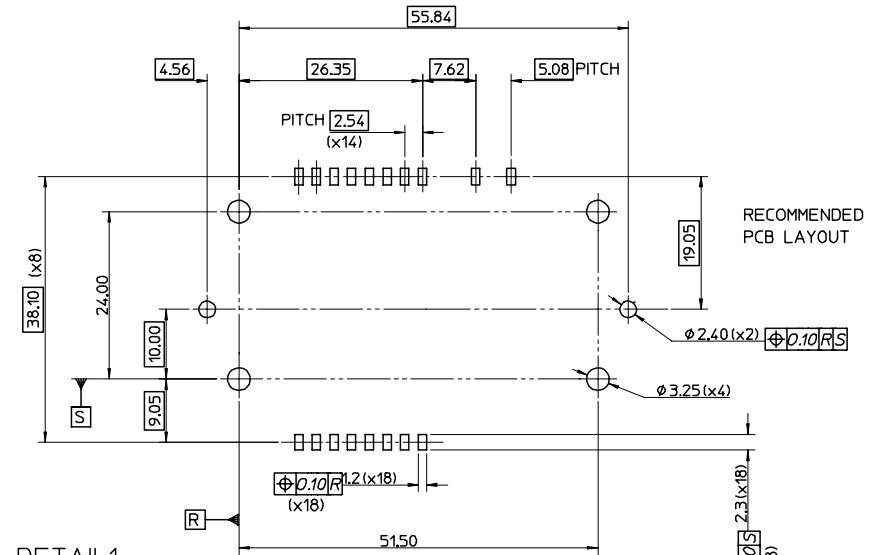
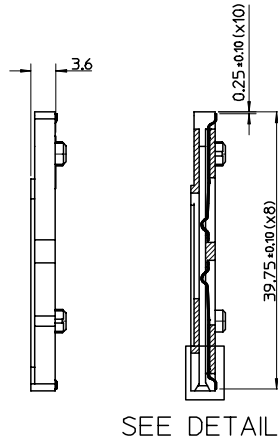
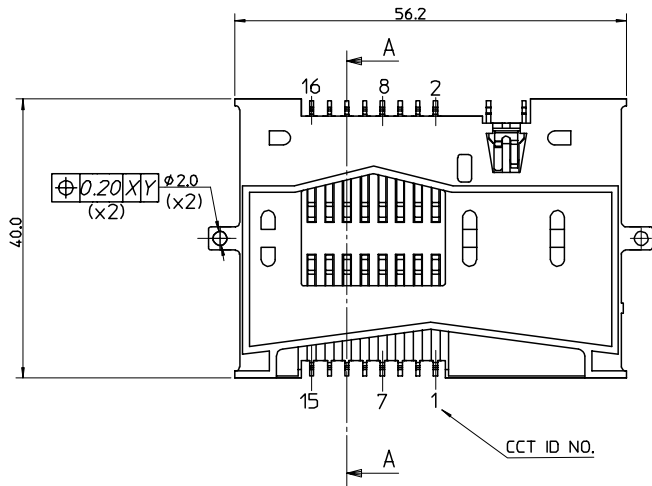
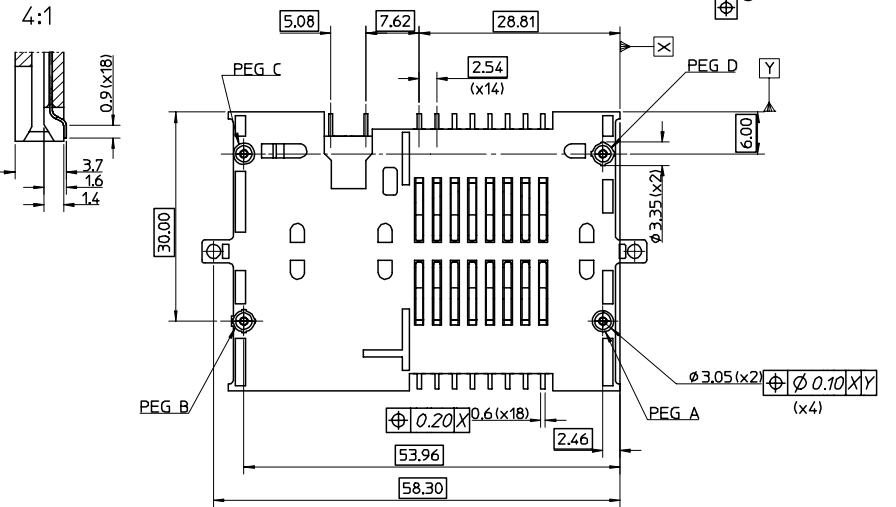


| ITEM | COMPONENT | QTY | MATERIAL |
|------|-----------------|-----------|--|
| ▽ | HOUSING | 1 | GLASS FILLED PBT, COLOUR BLACK |
| ▽ | SIGNAL TERMINAL | SEE CHART | 0.20 REF. THK. PHOSPHOR BRONZE GOLD OVER NICKEL ON CONTACT AREA |
| ▽ | SWITCH CONTACT | 1 | TIN IN SOLDER AREA. NICKEL UNDERCOAT ALLOVER |

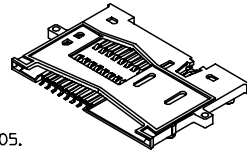
| PART NO. | CCT SIZE | WITH PEGS | HOLD DOWN FEATURES | PART NO. | CCT SIZE | WITH PEGS | HOLD DOWN FEATURES |
|------------|----------|-----------|--------------------|------------|----------|-----------|--------------------|
| 91322-0002 | 8 | A,B,C,D | YES | 91322-0001 | 16 | A,B,C,D | YES |
| 91322-0025 | 8 | A,B,C,D | NO | 91322-0039 | 16 | A,B,C,D | NO |
| 91322-0013 | 8 | A,C | YES | 91322-0027 | 16 | A,C | YES |
| 91322-0014 | 8 | A,C | NO | 91322-0028 | 16 | A,C | NO |
| 91322-0015 | 8 | B,D | YES | 91322-0029 | 16 | B,D | YES |
| 91322-0016 | 8 | B,D | NO | 91322-0030 | 16 | B,D | NO |
| 91322-0017 | 8 | NONE | YES | 91322-0031 | 16 | NONE | YES |
| 91322-0018 | 8 | NONE | NO | 91322-0032 | 16 | NONE | NO |



DETAIL 1



- NOTES:
- SEE PRODUCT SPECIFICATION PS-91321-005.
 - PACKAGING: TRAYS.
 - DATUM Z TO BE THE ZERO LINE FOR THE MEASUREMENT OF COPLANARITY. IT IS TO BE TAKEN AS THE PLANE OF A METAL BLOCK GAUGE ON WHICH THE CONNECTOR RESTS FREELY. ALL SOLDER TAILS TO LIE WITHIN 0.10mm OF THIS PLANE.



| REV | DESCRIPTION | QUALITY SYMBOLS |
|-----|----------------------|-----------------|
| 1 | LEAD-FREE CONVERSION | ▽ - 0 |
| 2 | EC NO: E2005-0367 | ∇ C = 0 |
| 3 | DRWN: PSHEAHAN | |
| 4 | CHKD: CHIKO | |
| 5 | APPR: BMAGUIRE | |

| GENERAL TOLERANCES (UNLESS SPECIFIED) | | SCALE | DESIGN UNITS | THIRD ANGLE PROJECTION | REVISE ON CAD ONLY |
|---|-----------|---------|--------------|------------------------|--------------------|
| PLACES | TOLERANCE | MM ONLY | METRIC | | |
| 4 PLACES | ± 0.10 | MM ONLY | | | |
| 3 PLACES | ± 0.05 | | | | |
| 2 PLACES | ± 0.05 | | | | |
| 1 PLACE | ± 0.10 | | | | |
| ANGULAR ±1/2° | | | | | |
| DRAFT WHERE APPLICABLE | | | | | |
| MUST REMAIN WITHIN DIMENSIONS | | | | | |
| THIS DRAWING CONTAINS INFORMATION THAT IS PROPRIETARY TO MOLEX INCORPORATED AND SHOULD NOT BE USED WITHOUT WRITTEN PERMISSION | | | | | |

SMART CARD FRICTION SMT (SMT VERSION)

MOLEX INCORPORATED

MATERIAL NO. SEE CHART DOCUMENT NO. SD-91322-004 SHEET NO. 1 OF 1