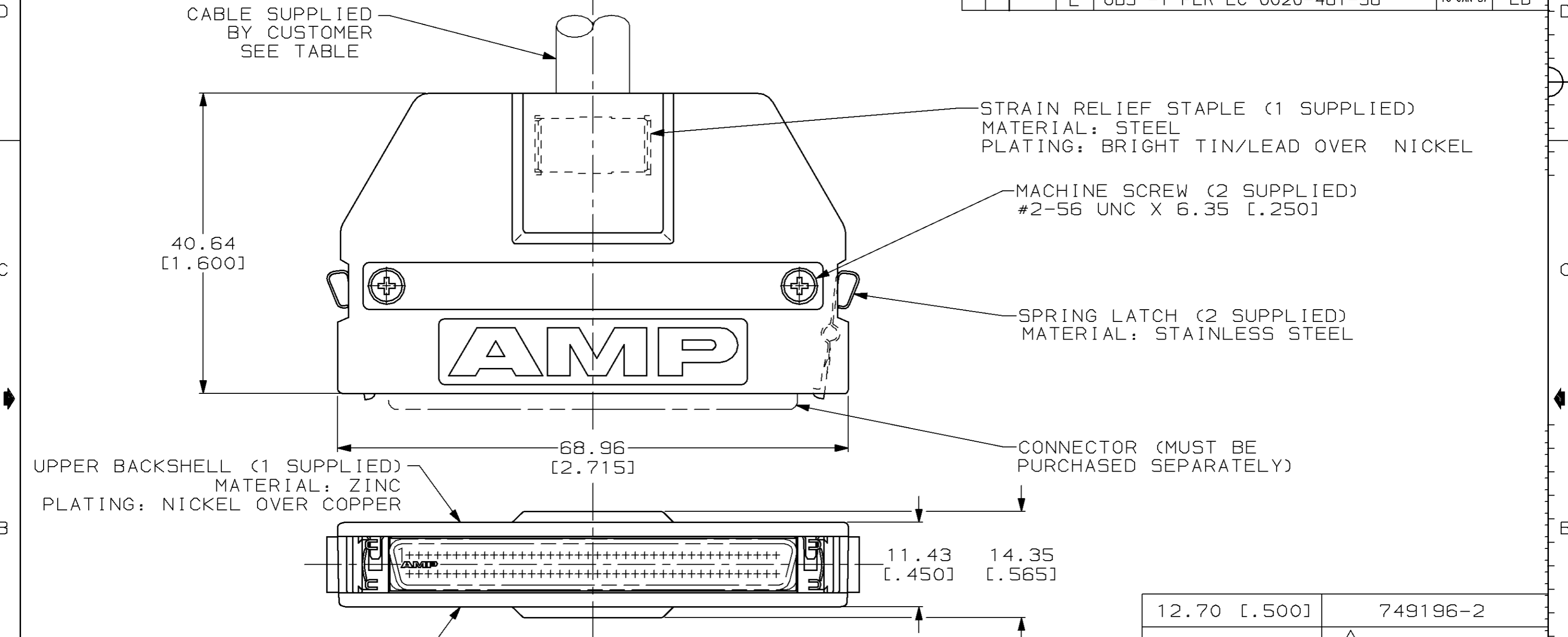


THIS DRAWING IS UNPUBLISHED. RELEASED FOR PUBLICATION, 19  
 © COPYRIGHT 19 BY AMP INCORPORATED. ALL INTERNATIONAL RIGHTS RESERVED.

LOC	DIST	P	F	ZONE	LTR	DESCRIPTION	DATE	APPD
BD	95				D	ADDED -2 PER NPR 3466	05/02/91	-
					E	OBS -1 PER EC 0020-481-96	10 JAN 97	LB



DO NOT SCALE PRINT. UNLESS SPECIFIED DIMENSIONS IN mm [INCHES] TOLERANCES ON: 2 PLC DEC ± - 3 PLC DEC ± 0.38 [.015] ANGLES ± -	DR 12-20-88 M.A. McCAFFREY	12.70 [.500]	749196-2
	CHK 12-20-88 M.E. SHIRK	10.67 [.420]	△ 749196-1
MATERIAL -	APPD 12-20-88 J. BROSCARD	MAX CABLE DIA	
FINISH -	APPD 12-20-88 C.E. REYNOLDS	PART NO	
	PRODUCT SPEC -	AMP INCORPORATED Harrisburg, Pa. 17105	
	APPLICATION SPEC -	NAME INDIVIDUAL KIT, UNASSEMBLED, 80 POSITION, STRAIGHT EXIT, UNKEYED, AMPLIMITE .050 Series	
	WEIGHT -	SIZE <b>B</b>	FSCM NO 00779
		SCALE 2:1	DRAWING NO 749196
			SHEET 1 OF 1

△ OBSOLETE PART NUMBER.