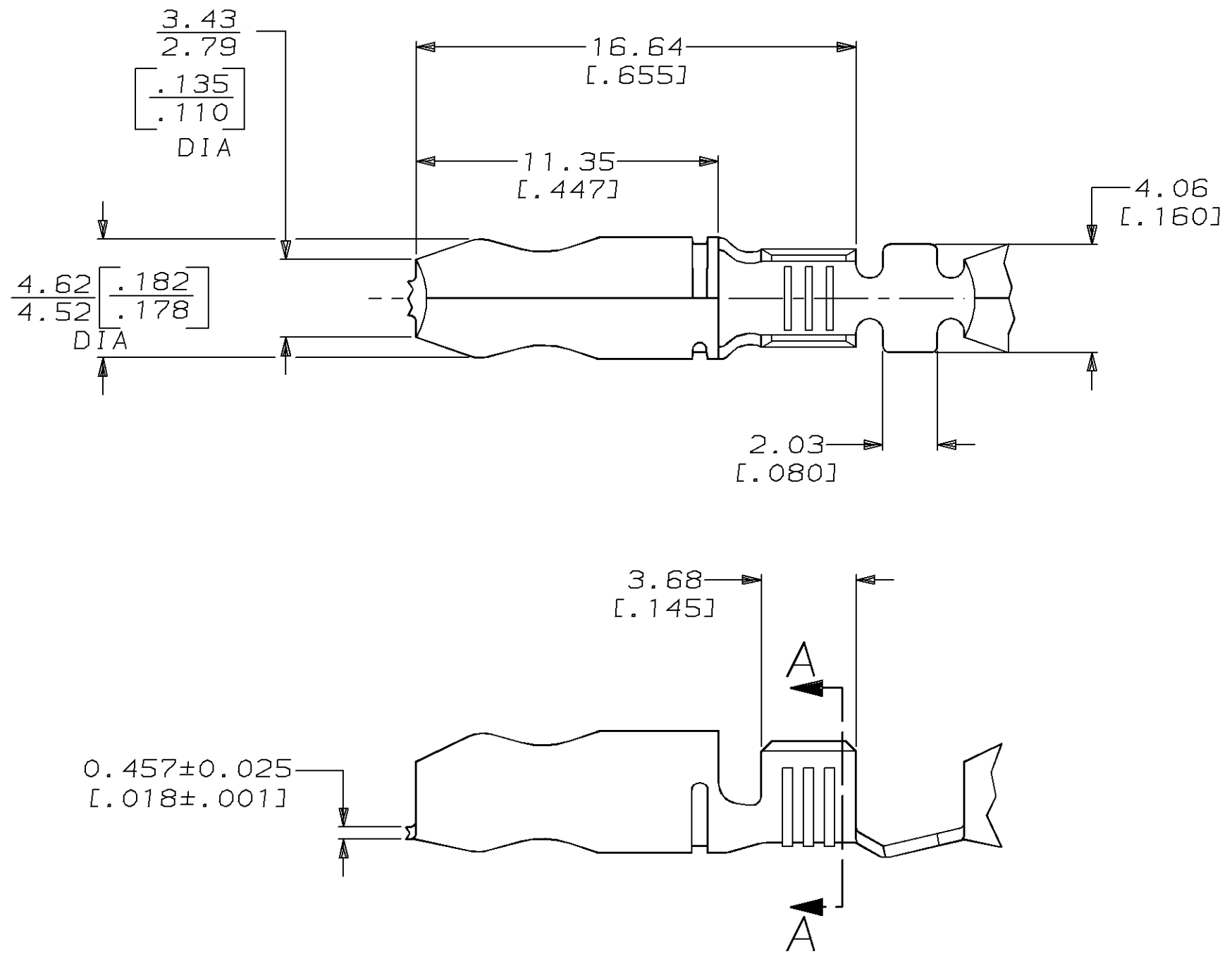
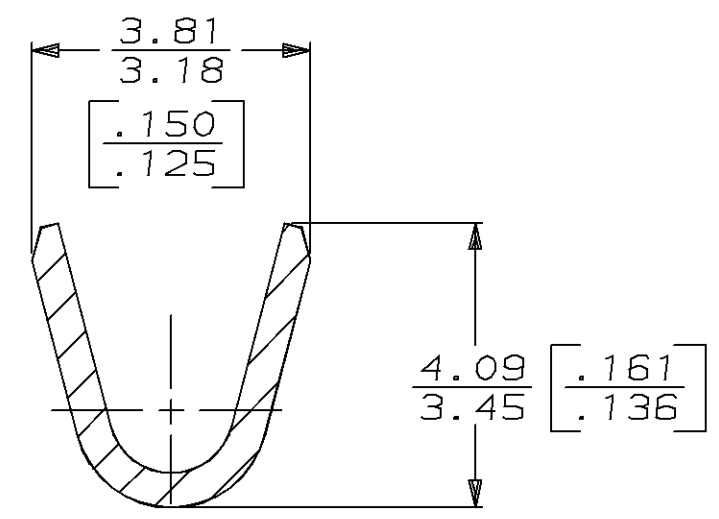


THIS DRAWING IS UNPUBLISHED. RELEASED FOR PUBLICATION, 19 .
 © COPYRIGHT 19 BY AMP INCORPORATED. ALL INTERNATIONAL RIGHTS RESERVED.

LOC	DIST	P	F	ZONE	LTR	REVISIONS	DATE	APPD
AF	50				A	REVISE & RELEASE PER 0710-0212-95	22/MAY/95	PF/GY



1 CONTINUOUS STRIP ON REEL.



SECTION A-A
SCALE 10:1

[18-14] AWG	63830-1
WIRE RANGE	PART NO
AMP AMP Incorporated Harrisburg, PA 17105-3608	
NAME SHUR PLUG, 4.57 [.180] DIA	
SIZE B	CAGE CODE 00779
SCALE 5:1	DRAWING NO C-63830
	SHEET 1 OF 1

DO NOT SCALE PRINT. UNLESS SPECIFIED DIMENSIONS IN mm [INCHES] TOLERANCES ON: 2 PLC DEC ± 0.25 [.010] 3 PLC DEC ± - ANGLES ± -	DR 01/MAR/95 PHILLIP M. FORTNEY
	CHK 01/MAR/95 JEFF R. RUTH
	APPD 01/MAR/95 GARY YETTER
	APPD 01/MAR/95 MARK BARNABA
MATERIAL 081 BRASS	PRODUCT SPEC -
FINISH 0.003302 [.000130] MAX PRE-TIN PL PER MIL-T-10727	APPLICATION SPEC -
	WEIGHT -

THIS DRAWING IS A CONTROLLED DOCUMENT FOR AMP INCORPORATED. IT IS SUBJECT TO CHANGE AND THE CONTROLLING ENGINEERING ORGANIZATION SHOULD BE CONTACTED FOR THE LATEST REVISION.