



# SAW filters for infrastructure systems

## Series/Type: B3882

The following products presented in this data sheet are being withdrawn.

Ordering Code	Substitute Product	Date of Withdrawal	Deadline Last Orders	Last Shipments
B39171B3882Z710		2012-01-13	2012-12-31	2013-03-30

For further information please contact your nearest EPCOS sales office, which will also support you in selecting a suitable substitute. The addresses of our worldwide sales network are presented at [www.epcos.com/sales](http://www.epcos.com/sales).

© EPCOS AG 2015. Reproduction, publication and dissemination of this publication, enclosures hereto and the information contained therein without EPCOS' prior express consent is prohibited.

EPCOS AG is a TDK Group Company.

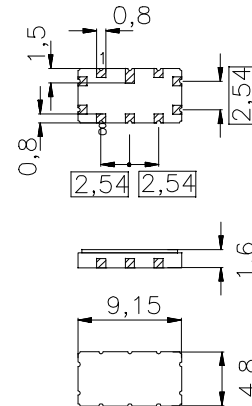
**Data Sheet**

 Ceramic package **QCC10B**
**Features**

- Low-loss filter
- Multichannel CDMA2000 capable
- Balanced or unbalanced operation possible
- Temperature stable
- Hermetically sealed ceramic SMD package

**Terminals**

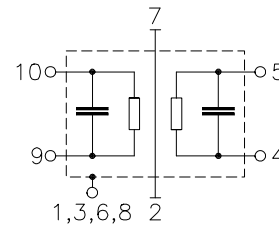
- Gold plated



Dimensions in mm, approx. weight 0,23 g

**Pin configuration**

10	Input
9	Input ground or balanced input
5	Output
4	Output ground or balanced output
2, 7	Ground
1, 3, 6, 8	To be grounded



Type	Ordering code	Marking and Package according to	Packing according to
B3882	B39171-B3882-Z710	C61157-A7-A49	F61074-V8172-Z000

**Electrostatic Sensitive Device (ESD)**
**Maximum ratings**

Operable temperature range	$T$	-40/ +85	°C	
Storage temperature range	$T_{stg}$	-40/ +85	°C	
DC voltage	$V_{DC}$	5	V	
Source power	$P_s$	10	dBm	

<b>SAW Components</b>	<b>B3882</b>
-----------------------	--------------

<b>Low-Loss Filter</b>	<b>168,96 MHz</b>
------------------------	-------------------

**Data Sheet**
**Characteristics**

Operating temperature:  $T = 0 \dots +85 \text{ }^\circ\text{C}$   
Terminating source impedance:  $Z_S = 50 \text{ } \Omega$  single ended and matching network  
Terminating load impedance:  $Z_L = 50 \text{ } \Omega$  single ended and matching network

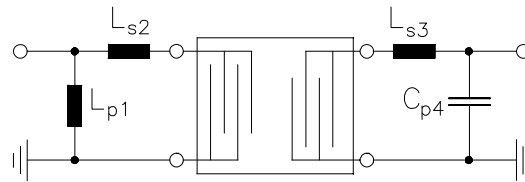
		min.	typ.	max.	
<b>Nominal frequency</b>	$f_N$	—	168,96	—	MHz
<b>Minimum insertion attenuation</b> (including matching network)	$\alpha_{\min}$	—	13,0	14,5	dB
<b>Passband width</b>					
$\alpha_{\text{rel}} \leq 1 \text{ dB}$	$B_{1\text{dB}}$	—	4,4	—	MHz
$\alpha_{\text{rel}} \leq 5 \text{ dB}$	$B_{5\text{dB}}$	—	4,9	—	MHz
$\alpha_{\text{rel}} \leq 30 \text{ dB}$	$B_{30\text{dB}}$	—	6,1	—	MHz
<b>Amplitude ripple<sup>1)</sup> (p-p)</b>	$\Delta\alpha$				
$f_N \pm 1,92 \text{ MHz}$		—	0,5	0,9	dB
$f_N \pm k*1,25 \text{ MHz} \pm 0,6144 \text{ MHz}$		—	0,4	0,7	dB
<b>Group delay ripple (p-p)</b>	$\Delta\tau$				
$f_N \pm 1,92 \text{ MHz}$		—	70	120	ns
<b>Phase Linearity<sup>1)</sup> (rms)</b>	$\Delta\phi$				
$f_N \pm 1,92 \text{ MHz}$		—	1,0	1,4	$^\circ$
$f_N \pm k*1,25 \text{ MHz} \pm 0,6144 \text{ MHz}$		—	1,0	1,4	$^\circ$
<b>Average Error Vector Magnitude<sup>1)</sup></b>	$EVM$				
$f_N \pm 1,92 \text{ MHz}$		—	1,9	3,0	%
$f_N \pm k*1,25 \text{ MHz} \pm 0,6144 \text{ MHz}$		—	1,9	3,0	%
<b>Relative attenuation (relative to <math>\alpha_{\min}</math>)</b>	$\alpha_{\text{rel}}$				
$f_N \pm 2,5 \text{ MHz} \dots f_N \pm 3,0 \text{ MHz}$		4	5	—	dB
$f_N \pm 3,0 \text{ MHz} \dots f_N \pm 17,5 \text{ MHz}$		10	20	—	dB
$f_N \pm 17,5 \text{ MHz} \dots f_N \pm 66,0 \text{ MHz}$		45	50	—	dB
<b>Temperature coefficient of frequency<sup>2)</sup></b>	$TC_f$	—	- 0,036	—	ppm/ $K^2$
<b>Turnover temperature</b>	$T_0$	—	35	—	$^\circ\text{C}$

<sup>1)</sup>Amplitude ripple/Phase Linearity/Average Error Vector Magnitude: where  $k = (-1,0,1)$

<sup>2)</sup> Temperature dependence of  $f_c$ :  $f_c(T_A) = f_c(T_0)(1 + TC_f(T_A - T_0)^2)$

**Data Sheet**
**Matching network to 50  $\Omega$  single ended input and output:**

(Element values depend upon PCB layout)



$$L_{p1} = 18 \text{ nH}$$

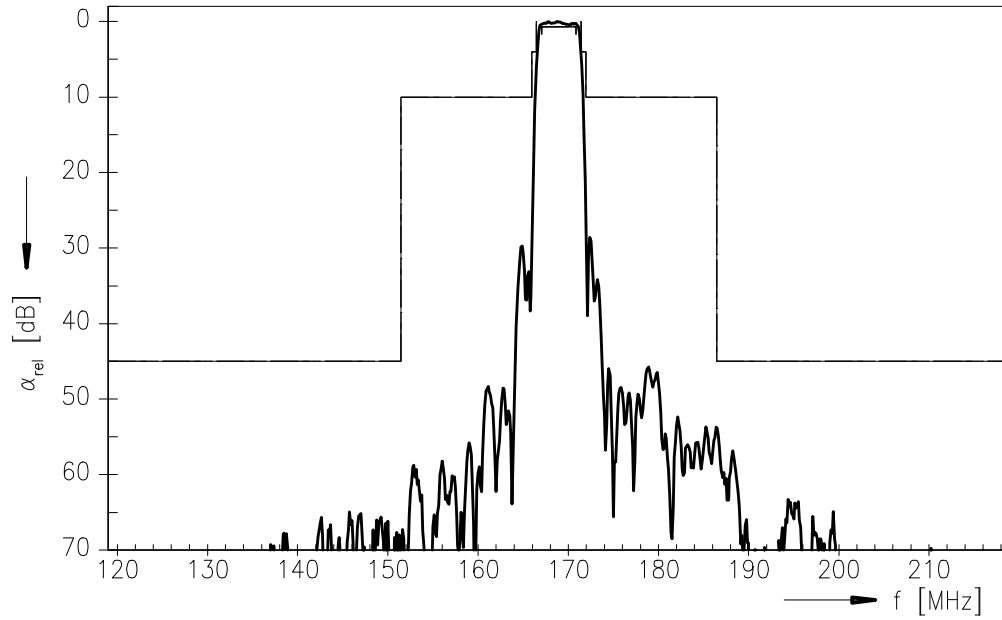
$$L_{s2} = 68 \text{ nH}$$

$$L_{s3} = 120 \text{ nH}$$

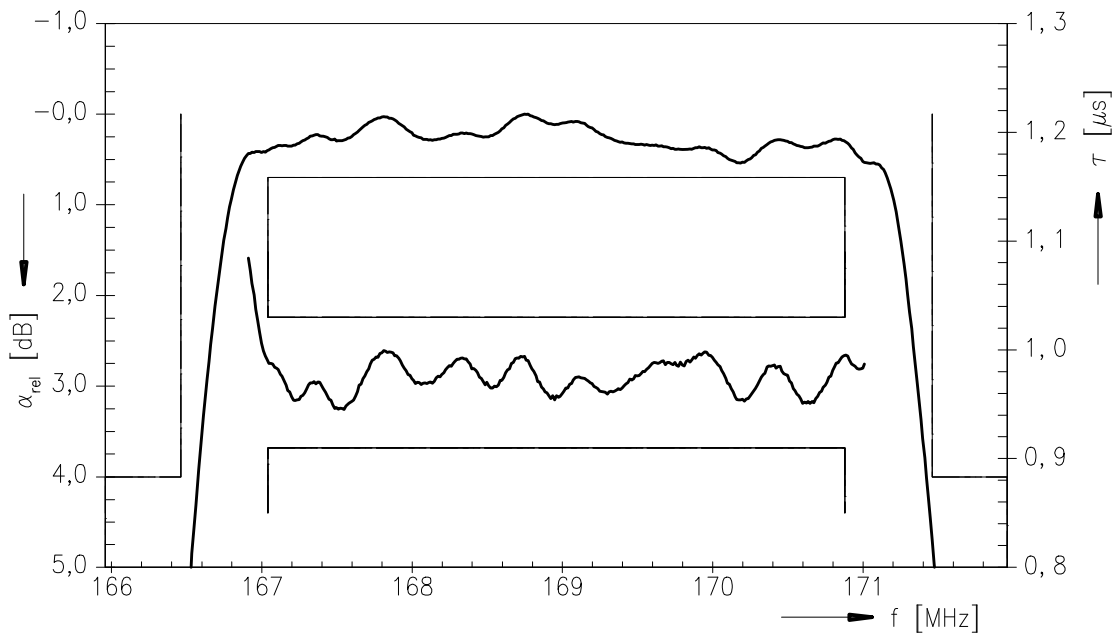
$$C_{p4} = 56 \text{ pF}$$

Data Sheet

Normalized frequency response



Normalized frequency response (pass band)



**Published by EPCOS AG****Surface Acoustic Wave Components Division, SAW MC PD****P.O. Box 80 17 09, 81617 Munich, GERMANY**

© EPCOS AG 2004. Reproduction, publication and dissemination of this brochure and the information contained therein without EPCOS' prior express consent is prohibited.

Purchase orders are subject to the General Conditions for the Supply of Products and Services of the Electrical and Electronics Industry recommended by the ZVEI (German Electrical and Electronic Manufacturers' Association), unless otherwise agreed.

This brochure replaces the previous edition.

For questions on technology, prices and delivery please contact the Sales Offices of EPCOS AG or the international Representatives.

Due to technical requirements components may contain dangerous substances. For information on the type in question please also contact one of our Sales Offices.