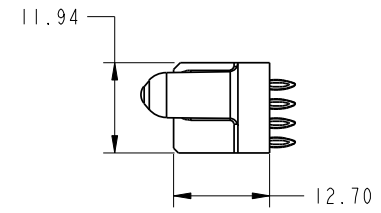
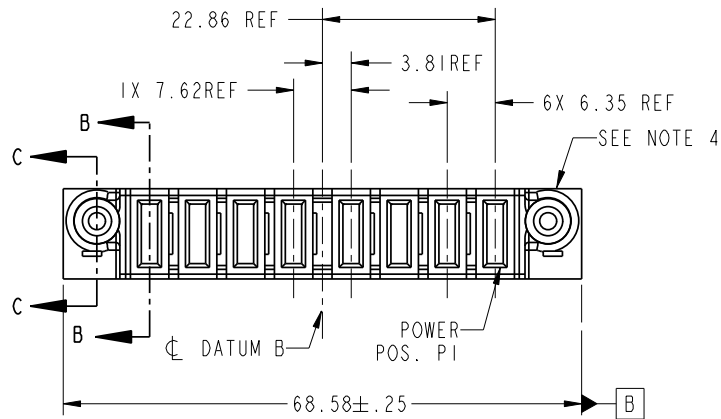


Tous droits strictement réservés. Reproduction ou communication o des liers interdite sous quelque forme que ce soit sans autorisation écrite du propriétaire. Propriete de c FCI. Droits de reproduction FCI.



All rights strictly reserved. Reproduction or issue to third parties in any form whatever is not permitted without written authority from the proprietor. Property of FCI. Copyright FCI.

PRODUCT NO. 51940-192-- NOTE: 3	POWER										E1
	E2	P8	P7	P6	P5	P4	P3	P2	P1		



CODE	DIM "M" MATING LENGTH	CONTACT TYPE
PC	[1.07]	POWER

mat'l code				SEE NOTE 2		tolerances unless otherwise specified		CUSTOMER		FCI	
lir	ecn no.	dr	date	linear	0.X ± 0.3	COPY		projection		www.fciconnect.com	
A	DG06-0259	JULIA	29/06/06	angles	0.XX ± 0.10	MM		title		8P	
				dr	0.XXX ± 0.050	scale		product family		PwrBlade	
				enr	0° ± 2°	1:1		size		213	
				chr	JULIA WANG 29/06/06			dwg no		sheet	
				appd	SALLY LUO 29/06/06			A		1 of 4	
					BEER FU 29/06/06			51940-192			
					JOSEPH HSIA 29/06/06						
sheet index	revision sheet	A	A	A	A						
		1	2	3	4						

1 | 2

Pro/E

PDM: Rev: A

STAT: Released

Printed: Dec 20, 2010

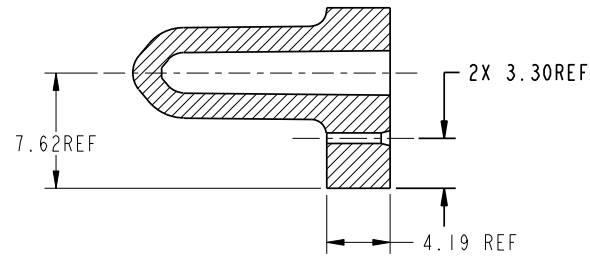
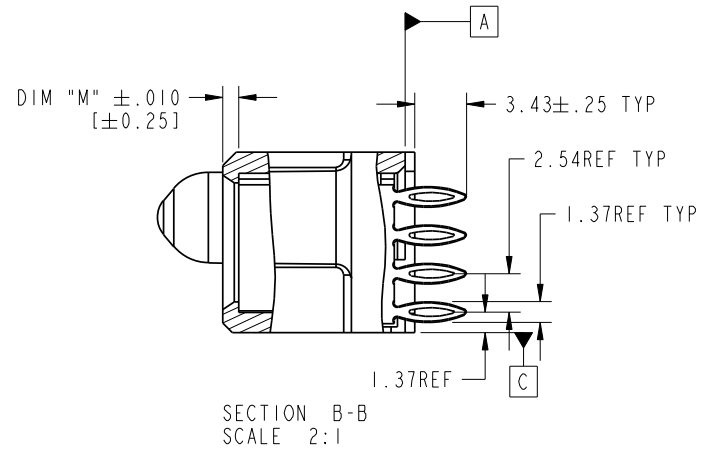
Tous droits strictement reserves. Reproduction ou communication a des tiers interdite sous quelque forme que ce soit sans autorisation ecrite du proprietaire. Propriete de c FCI. Droits de reproduction FCI.

All rights strictly reserved. Reproduction or issue to third parties in any form whatever is not permitted without written authority from the proprietor. Property of FCI. Copyright FCI.



PRODUCT NUMBER

51940-192__
NOTE: 3



CONFIDENTIAL

mol'l code				tolerances unless otherwise specified		CUSTOMER		FCI www.fciconnect.com	
lir	ecn no.	dr	date	linear	0.X ±0.3	COPY		title	
A					0.XX ±0.10	projection		8P	
				angles	0.XXX ±0.050	⊕		VERTICAL PF RECEPT	
				dr	0° ±2°	MM		product family	
				enr	JULIA WANG 29/06/06	←→		PwrBlade	
				chr	SALLY LUO mm/dd/yy	scale		code	
				appd	BEER FU 29/06/06	1:1		213	
					JOSEPH HSIA 29/06/06	A		51940-192	
sheet index	revision sheet							sheet 2 of 4	

code code 22516

Pro/E

PDM: Rev: A

STAT US: Released

Printed: Dec 20, 2010

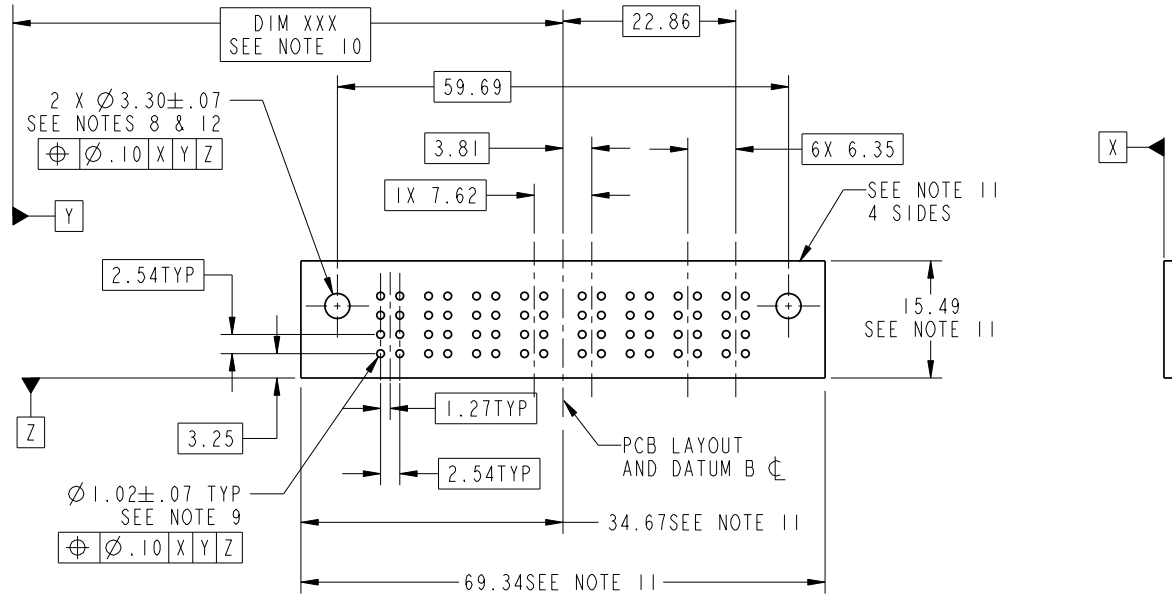
Tous droits strictement reserves. Reproduction ou communication a des tiers interdite sous quelque forme que ce soit sans autorisation ecrite du proprietaire. Propriete de c FCI. Droits de reproduction FCI.

All rights strictly reserved. Reproduction or issue to third parties in any form whatever is not permitted without written authority from the proprietor. Property of FCI. Copyright FCI.



PRODUCT NUMBER

51940-192__
NOTE: 3



CONFIDENTIAL

mat'l code				tolerances unless otherwise specified		CUSTOMER		FCI www.fciconnect.com					
lir	ecn no.	dr	date	linear	0.X ±0.3	COPY		title					
A				linear	0.XX ±0.10	projection		8P					
				angles	0.XXX ±0.050			VERTICAL PF RECEPT					
				dr	0° ±2°			product family		code			
				enr	JULIA WANG 29/06/06			PwrBlade		213			
				enr	SALLY LUO mm/dd/yy			size		dwg no		sheet	
				chr	BEER FU 29/06/06			A		51940-192		3 of 4	
				appd	JOSEPH HSIA 29/06/06			scale		1:1			
sheet index		revision sheet											

code code 22516

Tous droits strictement reserves. Reproduction ou communication a des tiers interdite sous quelque forme que ce soit sans autorisation écrite du propriétaire. Propriete de c FCI. Droits de reproduction FCI.



All rights strictly reserved. Reproduction or issue to third parties in any form whatever is not permitted without written authority from the proprietor. Property of FCI. Copyright FCI.

1 | 2

3 |

4

PRODUCT NUMBER

51940-192__
NOTE: 3

NOTES:

1. DIMENSIONS AND TOLERANCES ARE IN ACCORDANCE WITH ASME Y14.5M, 1994 UNLESS OTHERWISE SPECIFIED.

CONNECTOR NOTES:

- ② HOUSING MATERIAL: UL 94 V-0 GLASS FILLED
HIGH-TEMP THERMOPLASTIC
POWER CONTACT MATERIAL: COPPER ALLOY
SIGNAL PIN MATERIAL: COPPER ALLOY
- 3. PLATING SPEC.
51940-192,51940-192LF PLATING SPEC. WAS SHOWN IN THE PRINT OF 10064183.
- ④ MANUFACTURER'S NAME, P/N, AND DATE CODE TO APPEAR ON THIS SURFACE.
- 5. PRODUCT SPECIFICATION GS-12-149.
APPLICATION SPECIFICATION BUS-20-067.
- 6. PACKAGED IN TRAYS.

PCB NOTES:

- 7. ALL HOLE DIAMETERS ARE FINISHED HOLE SIZE.
- ⑧ MOUNTING HOLES, WHERE APPLICABLE, ARE UNPLATED.
- ⑨ $\varnothing .0453 \pm .0010$ [1.151 \pm 0.025] DRILLED HOLES PLATED WITH .0003 [0.008] MIN SnPb OVER .001 [0.03] TO .003 [0.08] Cu PLATING TO ACHIEVE $\varnothing .040 \pm .003$ [1.02 \pm .07] HOLE.
- ⑩ "DIM XXX" TO BE DETERMINED BY THE CUSTOMER.
- ⑪ CONNECTOR KEEP-OUT ZONE.
- ⑫ RECOMMENDED RETENTION TO PCB
 $\varnothing 3.3$ THRU HOLE FOR #5 SOCKET HEAD CAP SCREW
MAX. HEAD 5.21 RECOMMENED SCREW LENGTH 12mm + PCB THICKNESS.
RECOMMENDED SCREW SEATING TO PCB TORQUE: 2-5 lbf-in (2300-5760 gf-cm)

CONFIDENTIAL

mat'l code				tolerances unless otherwise specified		CUSTOMER		FCI www.fciconnect.com				
lir	ecn no.	dr	date	linear	0.X \pm 0.3	projection	title	8P				
A					0.XX \pm 0.10			VERTICAL PF RECEPT	product family			
					0.XXX \pm 0.050				PwrBlade	code	213	
				angles	0° \pm 2°	MM ← → scale 1:1	size	dwg no	sheet			
				dr	JULIA WANG 29/06/06					A	51940-192	4 of 4
				enr	SALLY LUO mm/dd/yy							
				chr	BEER FU 29/06/06							
				appd	JOSEPH HSIA 29/06/06							
sheet index	revision sheet											

A

A

B

B

1 | 2

Pro/E

PDM: Rev: A

STAT US: **Released** 22516

Printed: Dec 20, 2010