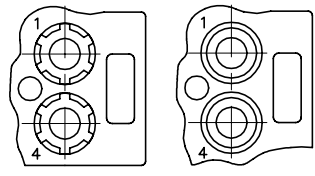
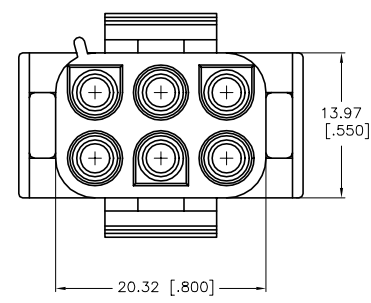
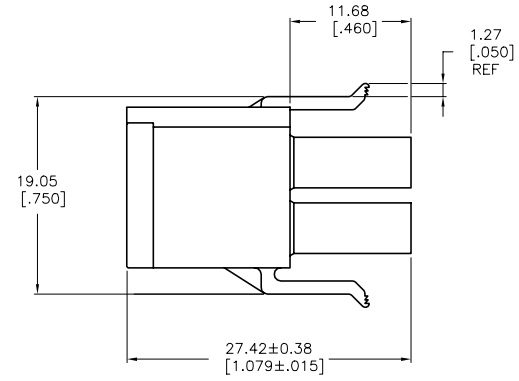
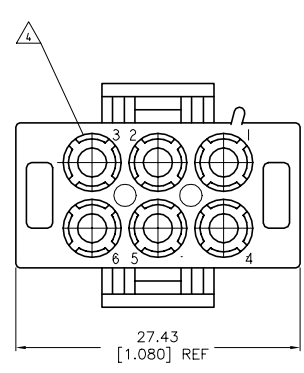


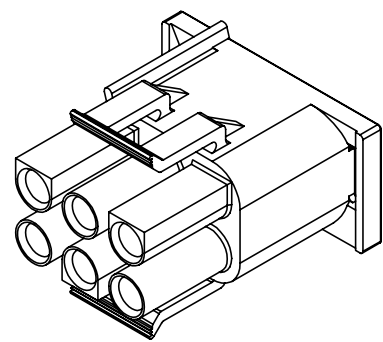
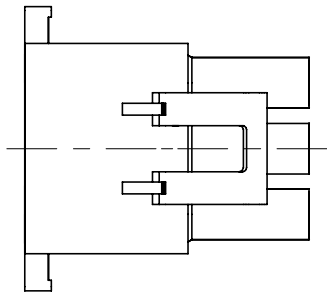
REVISIONS				
#	REV	DESCRIPTION	DATE	BY / APPR
1	C	REVISED PER ECR-21-100149	29JAN2021	PC JS

- MATES WITH APPROPRIATE UNIVERSAL MATE-N-LOK™ CAP OR HEADER.
- SMALL NICKS ARE PERMITTED ON THE CIRCUIT TOWERS WHICH COULD INCREASE THE INITIAL HOUSING MATING FORCE BY UP TO 4.4 NEWTONS [1.0 LBS]. NO INDIVIDUAL NICKED TOWER SHALL INCREASE THIS FORCE BY OVER 2.2 NEWTONS [.5 LBS].
- DIMENSIONS SHOWN REPRESENT PRODUCT IN DRY, AS MOLDED CONDITION ADDITIONAL 2% GROWTH DUE TO SUBSEQUENT MOISTURE ABSORPTION MAY OCCUR AND SHOULD BE ACCOUNTED FOR.

- △4 FOUR RIBS EQUALLY SPACED, NO SPECIFIC ORIENTATION, NO RIBS OR SIX RIBS EQUALLY SPACED, NO SPECIFIC ORIENTATION, OPTIONAL
- △5 FLAMMABILITY V2 FOR THICKNESS 0.38mm, 1.5mm, and 3.0mm PER IEC 60695-11-10.
- △6 GLOW-WIRE FLAMMABILITY (GWFI) 800°C FOR THICKNESS 0.38mm AND 0.75mm PER IEC 60695-2-12.
- △7 GLOW-WIRE FLAMMABILITY (GWFI) 960°C FOR THICKNESS 1.5mm AND 3.0mm PER IEC 60695-2-12.
- △8 GLOW-WIRE IGNITION (GWIT) 825°C FOR THICKNESS 0.38mm, 0.75mm, 1.5mm AND 3.0mm PER IEC 60695-2-13.



OPTIONAL CONSTRUCTION △4



△5	△6	△7	△8	NYLON UL94V-2 GWT NATURAL	794816-2
				NYLON UL94V-0 NATURAL	794816-1
				MATERIAL	PART NUMBER

THIS DRAWING IS A CONTROLLED DOCUMENT.		DR: K. WHITAKER 01JAN2021	TE Connectivity	
DIMENSIONS: mm		CHK: S. RIDGILL 01JAN2021	PLUG, SHORT LATCH, 6 CIRCUIT, UNIVERSAL MATE-N-LOK™	
DRAWING SPECIFICATIONS:		APP: S. RIDGILL 01JAN2021	RESTRICTED TO	
0 P.C. ± -	1 P.C. ± -	2 P.C. ± 0.13	3 P.C. ± -	4 P.C. ± -
MATERIAL: SEE TABLE		FINISH: -	WEIGHT: 0.000000	SCALE: 4:1
CUSTOMER DRAWING		SIZE: A1	DRAWING NO: 100779	REV: C
		DATE: 01JAN2021	DRAWING NO: 794816	SHEET: 1 OF 1