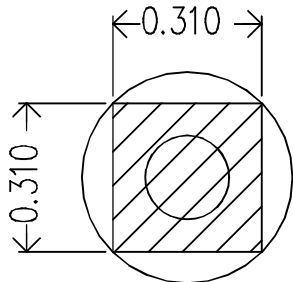
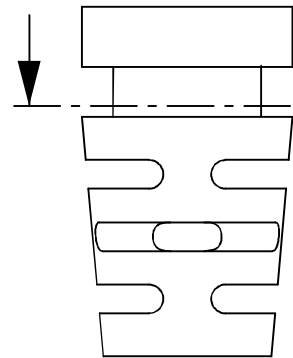
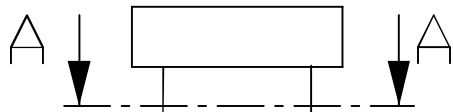
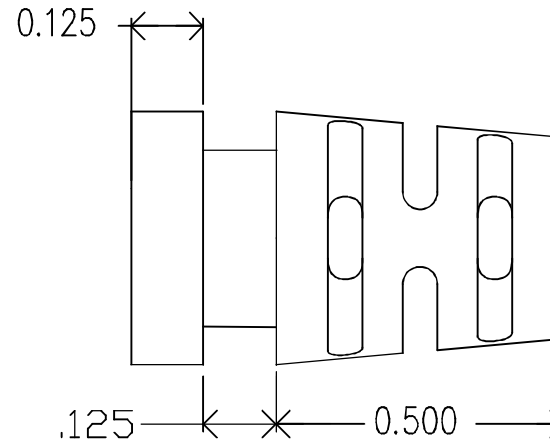
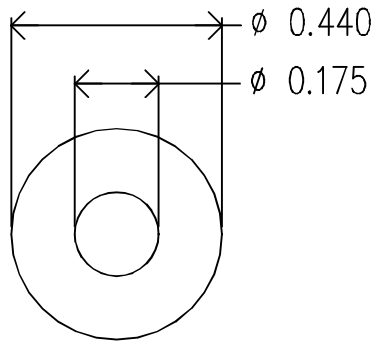
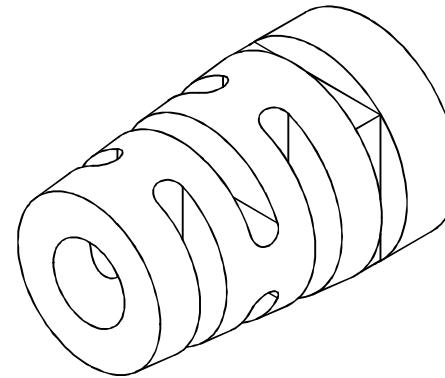


REVISIONS			DATE	APPROVED
ZONE	REV.	DESCRIPTION		



A-A



MOLD MATERIAL ISC P/N: 5000214, PVC, M1472, BLACK, RoHS

ISC ENGINEERING
CONTROLLED COPY
 Rich Fierro 01/24/2019

Dimensions are subject to change.
 PROPRIETARY AND CONFIDENTIAL
 THE INFORMATION CONTAINED IN THIS DRAWING IS THE SOLE PROPERTY OF ISC ENGINEERING. ANY REPRODUCTION IN PART OR AS A WHOLE WITHOUT THE WRITTEN PERMISSION OF ISC ENGINEERING IS PROHIBITED.

		DIMENSIONS ARE IN INCHES		NAME	DATE	ISC Engineering 4351 Schaefer Ave, Chino, CA 91710 Ph: 909-596-3315 Fax: 909-596-3335 www.iscengineering.com www.overmoldtooling.com
		TOLERANCES:		DRAWN	R FIERRO	
		FRACTIONAL ±		CHECKED		
		ANGULAR: MACH ±		ENG APPR.		
		BEND ±		MFG APPR.		
		TWO PLACE DECIMAL ±		Q.A.		
		THREE PLACE DECIMAL ±		COMMENTS:		
		MATERIAL ---				1461080-175-E-310x310-440-0
NEXT ASSY	USED ON	FINISH ---				SIZE A DWG. NO. 1467102 REV.
APPLICATION		DO NOT SCALE DRAWING				SCALE: 5:1 WEIGHT: SHEET 1 OF 1