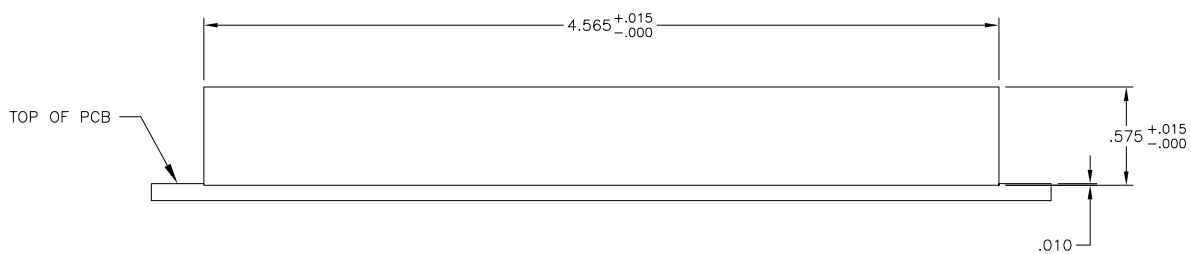
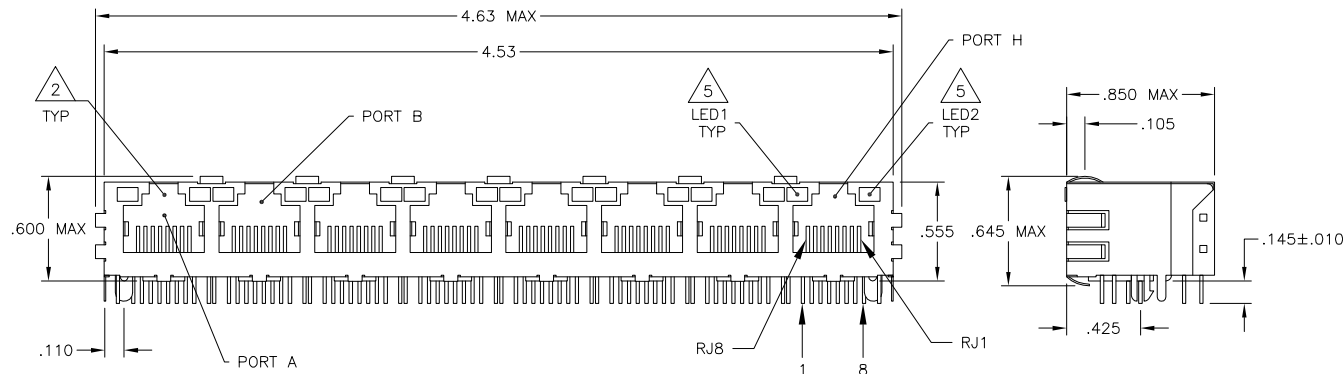
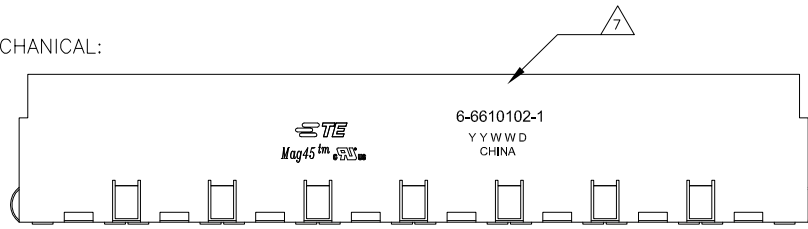


| LOC | DATE          | REVISIONS     | DATE      | BY | APP'D |
|-----|---------------|---------------|-----------|----|-------|
| AA  | 22            |               |           |    |       |
| D   | REV PER       | ECO-09-025671 | 16NOV2009 | QL | LR    |
| E   | ECO-11-013353 |               | 20MAY2011 | EL | LR    |

MECHANICAL:



1X8 SUGGESTED PANEL CUTOUT

- 1. HOUSING - THERMOPLASTIC PET POLYESTER FLAMMABILITY RATING UL 94V-0.  
SHIELD - .010" THICK C26800 BRASS PREPLATED WITH 30μINCH MIN SEMI-BRIGHT NICKEL. SOLDER TABS POST DIPPED WITH 100μINCH MIN SAC SOLDER.  
MOD JACK CONTACTS - 0.0157 X 0.018" PHOSPHOR BRONZE. 50μINCH MIN OVERALL NICKEL UNDERPLATE WITH SELECT 50μINCH MIN HARD GOLD FINISH PLATE. SOLDER TAILS WITH 100μINCH MIN MATTE TIN AND/OR SAC SOLDER DIP.  
LIGHT EMITTING DIODE(LED) - DIFFUSED EPOXY LENS, .020" X .020" CARBON STEEL WIREFRAME LEADS PRE-PLATED WITH 80μINCH SILVER OVER 40μINCH NICKEL UNDERPLATE OVER 40μINCH COPPER UNDERPLATE. POST-PLATED WITH 100μINCH MIN MATTE TIN AND/OR SAC SOLDER DIP OR PURE TIN SOLDER DIP.
- 2. RJ45 JACK CAVITY CONFORMS TO FCC RULES AND REGULATIONS PART 68, SUB PART F.
- 3. MAGNETICS  
-IMPEDANCE: 100 OHMS  
-TURNS RATIO (CHIP-CABLE): TX = 1:1, RX = 1:1  
-OPEN CIRCUIT INDUCTANCE (OCL): 350μH MIN @100kHz, 0.1VRMS, 8mA DC BIAS FROM 0°C TO 70°C, TX AND RX  
-PERFORMANCE @ 25°C:  
INSERTION LOSS (IL): 1.1dB MAX FROM 0.5MHz TO 100MHz  
RETURN LOSS (RL): 18dB MIN FROM 0.5MHz TO 30MHz  
18-20LOG(f/30dB) MIN FROM 30.1MHz TO 60MHz  
12dB MIN FROM 60.1MHz TO 80MHz  
CROSSTALK ATTENUATION: 35dB MIN FROM 0.5MHz TO 40MHz  
33-20\*LOG(f/50dB) MIN FROM 40.1MHz TO 100MHz  
COMMON MODE REJECTION RATIO (CMRR): 30dB MIN FROM 0.5MHz TO 100MHz  
-ISOLATION VOLTAGE: 2250VDC (MAX) FOR 60 SECONDS WITH A RISE TIME OF 500V/SEC AND WITH ALL PORTS CONNECTED.
- 4. OPERATING TEMPERATURE: FROM 0°C TO +70°C.
- 5. IF THE LED WITH 250 OHM RESISTORS, LED IS DRIVEN WITH 5V VOLTAGE AND THE MAX OPERATING CURRENT IS 20mA.  
LED COLOR : DOMINANT WAVELENGTH (LD): GREEN 568 nm TYP. @ VF=5V  
FORWARD CURRENT (IF): GREEN 12 mA TYP. @ VF=5V
- 6. INDICATED CONNECTIONS ARE FOR NIC CONFIGURATION. THE MAGNETICS ARE SYMMETRICAL AND SUPPORT OR AUTO-MDI/MDIX.
- 7. TE CONNECTIVITY LOGO, PART NUMBER, DATE CODE, COUNTRY OF ORIGIN AND AGENCY APPROVAL MARKING IN APPROXIMATE LOCATION SHOWN.
- 8. THE PART IS RECOMMENDED FOR WAVE SOLDERING PROCESS. PREHEAT TEMPERATURE IS 120°C TO 160°C, 120 SECONDS TO 180 SECONDS. PEAK WAVE SOLDERING TEMPERATURE IS 260°C MAX, 10 SECONDS MAX.

| GREEN | GREEN | 6-6610102-1 |
|-------|-------|-------------|
| LED1  | LED2  | PART NUMBER |

THIS DRAWING IS A CONTROLLED DOCUMENT.

|                        |                 |                 |                 |
|------------------------|-----------------|-----------------|-----------------|
| DESIGNED BY: D. FAROLE | DATE: 10MAR2009 | NAME: D. FAROLE | DATE: 10MAR2009 |
| CHECKED BY: D. FAROLE  | DATE: 10MAR2009 | NAME: D. FAROLE | DATE: 10MAR2009 |
| APPROVED BY: D. FAROLE | DATE: 10MAR2009 | NAME: D. FAROLE | DATE: 10MAR2009 |

1X8 MAG45(TW) MODULAR JACK, 7K2 SCHEMATIC, 726K2 SERIES CIRCUIT, DECOUPLING CAPACITOR, SHIELDED, WITH RESISTOR LEADS

|          |    |           |       |            |           |
|----------|----|-----------|-------|------------|-----------|
| SIZE     | A1 | DATE CODE | 00779 | DRAWING NO | C=6610102 |
| WEIGHT   | -  | SCALE     | 2:1   | SHEET      | 1 OF 2    |
| MATERIAL | -  | FINISH    | -     | REV        | F         |

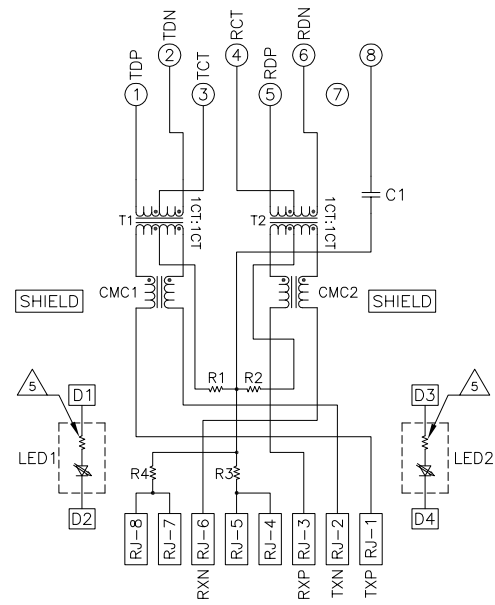
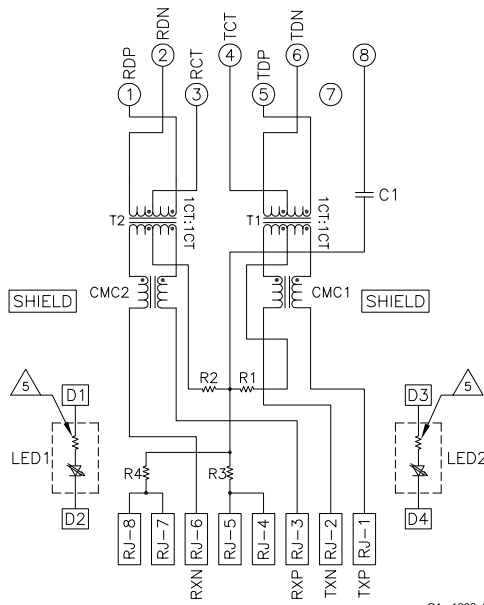
CUSTOMER DRAWING

| LOC | DIST | REV | DATE | BY | APPD |
|-----|------|-----|------|----|------|
| AA  | 22   |     |      |    |      |

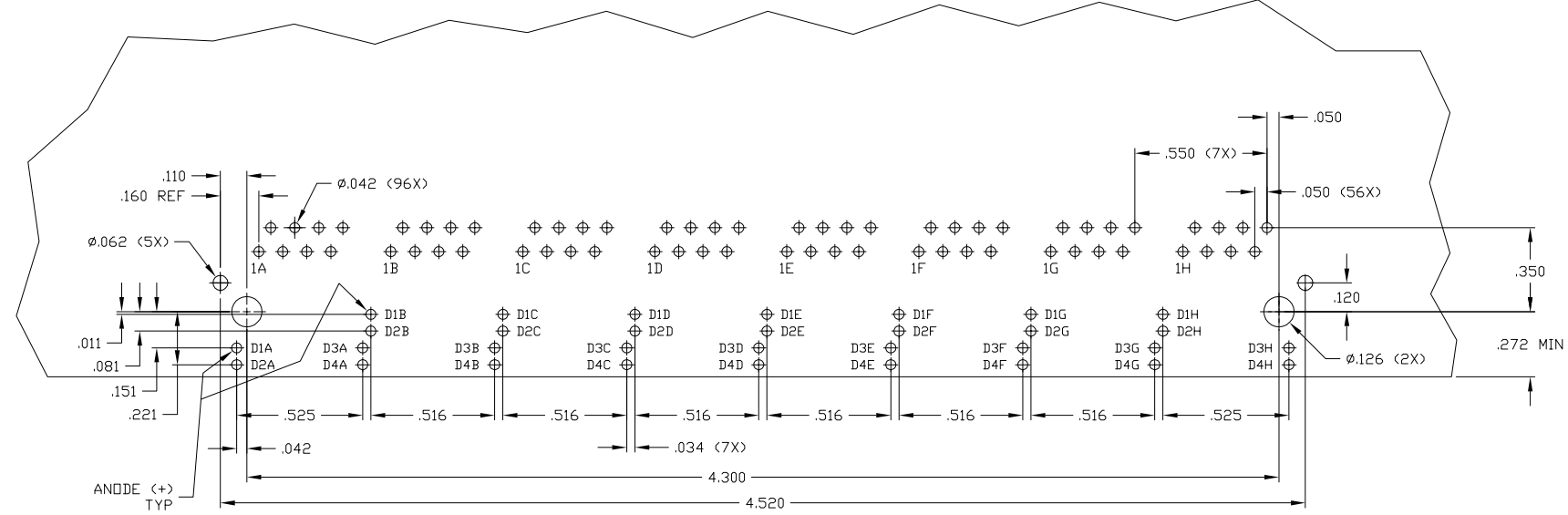
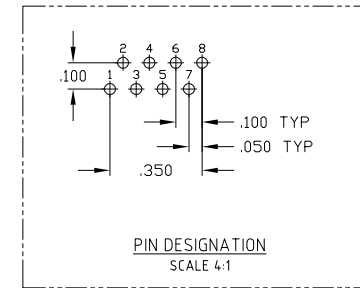
| REVISIONS |      |             |    |
|-----------|------|-------------|----|
| REV       | DATE | DESCRIPTION | BY |
| -         | -    | SEE SHEET 1 | -  |

726K2 SERIES MAGNETIC CIRCUIT  
PORTS 1,3,5,7

726K2 SERIES MAGNETIC CIRCUIT  
PORTS 2,4,6,8



C1 = 1000pF, 2kV CAPACITOR  
R1-R4 = 75 OHMS, 1/16 W RESISTORS



SUGGESTED PCB LAYOUT  
(Component Side)  
SCALE 4:1

|  |  |               |                  |                  |   |
|--|--|---------------|------------------|------------------|---|
| THIS DRAWING IS A CONTROLLED DOCUMENT. |  | REV. A        | 10/04/2005       | NAME             | 17X8 MAG45(TW) MODULAR JACK, 7K2 SCHEMATIC, |
| DRAWN BY: FERNANDEZ-RODRIGUEZ          |  | CHK. FAROLE   | 10/04/2005       | DATE             | 726K2 SERIES CIRCUIT, DECOUPLING CAPACITOR, |
| DESIGNED BY: FAROLE                    |  | CHK. FAROLE   | 10/04/2005       | DATE             | SHIELDED, WITH RESISTOR LEADS               |
| PRODUCT SPEC                           |  | 108-2100      |                  | APPLICATION SPEC |   |
| MATERIAL                               |  | SIZE          | 00779            | DRAWING NO       | C-6610102                                   |
| FINISH                                 |  | SCALE         | 2:1              | SHEET            | 2 of 2                                      |
| WEIGHT                                 |  | RESTRICTED TO | CUSTOMER DRAWING |                  |   |