

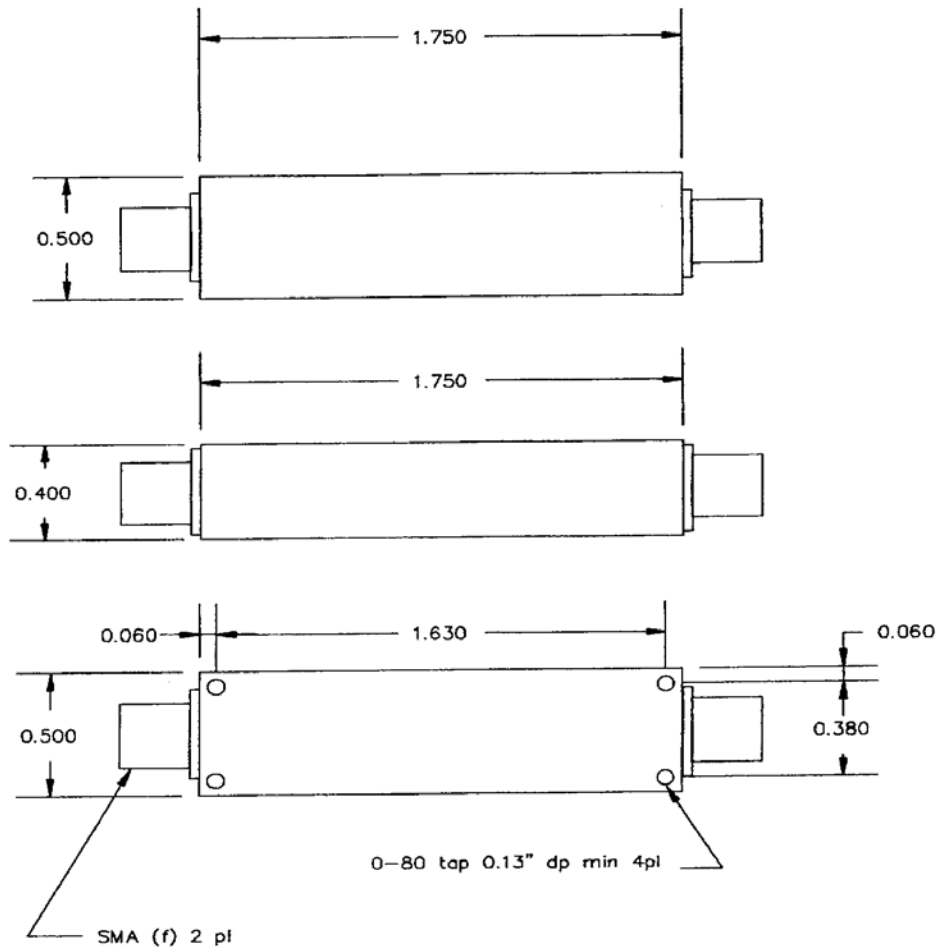


1555 MHz LC Bandpass Filter

Part Number: AE1555B10155

Center Frequency:	1555 MHz
Passband:	1520-1590 MHz
Insertion Loss:	<1dB
Return Loss over Passband:	14dB
Rejection:	>40 dB @ 0-1000 MHz
Connector Type:	SMA (F)
Size:	1.75 x 0.5 x 0.4 inches

Outline Drawing:





ANATECH ELECTRONICS, INC.

Manufacturer of RF & Microwave Products

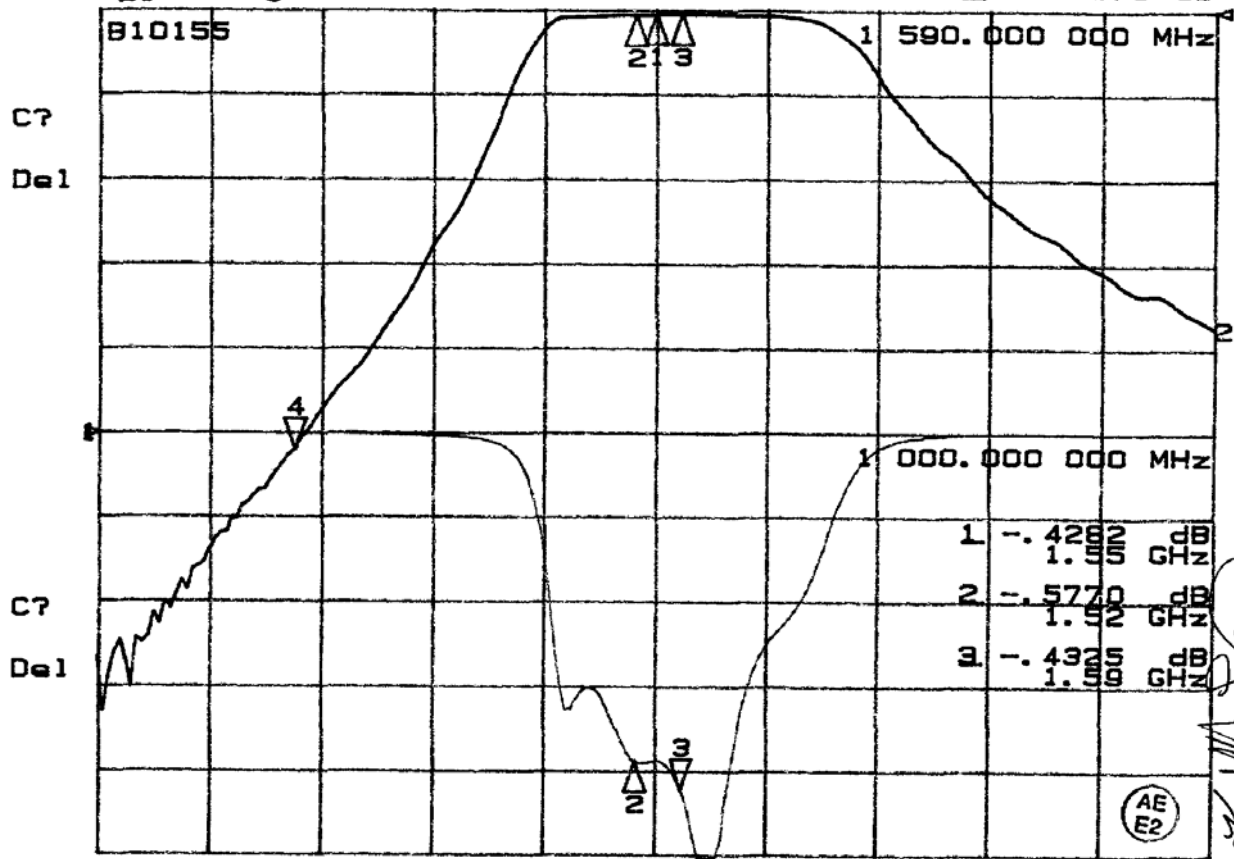


1555 MHz LC Bandpass Filter

Part Number: AE1555B10155

Response Plot:

27 Aug 2008 10:40:22
 CH1 S₁₁ log MAG 5 dB/ REF 0 dB 3 -21.082 dB
 CH2 S₂₁ log MAG 10 dB/ REF 0 dB 4 -51.979 dB



CENTER 1 550.000 000 MHz

SPAN 1 695.423 988 MHz