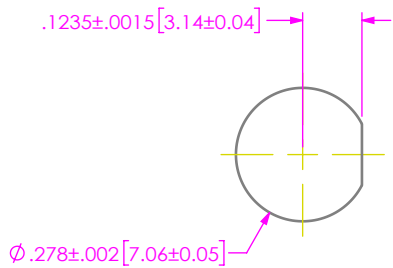


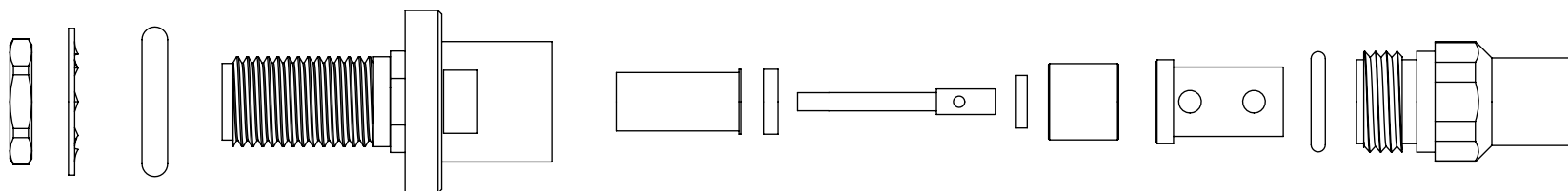
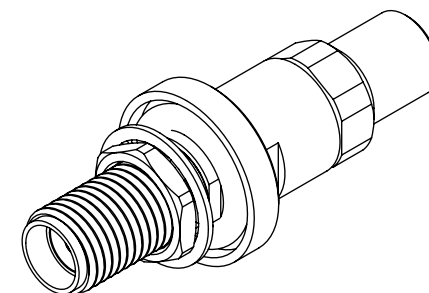
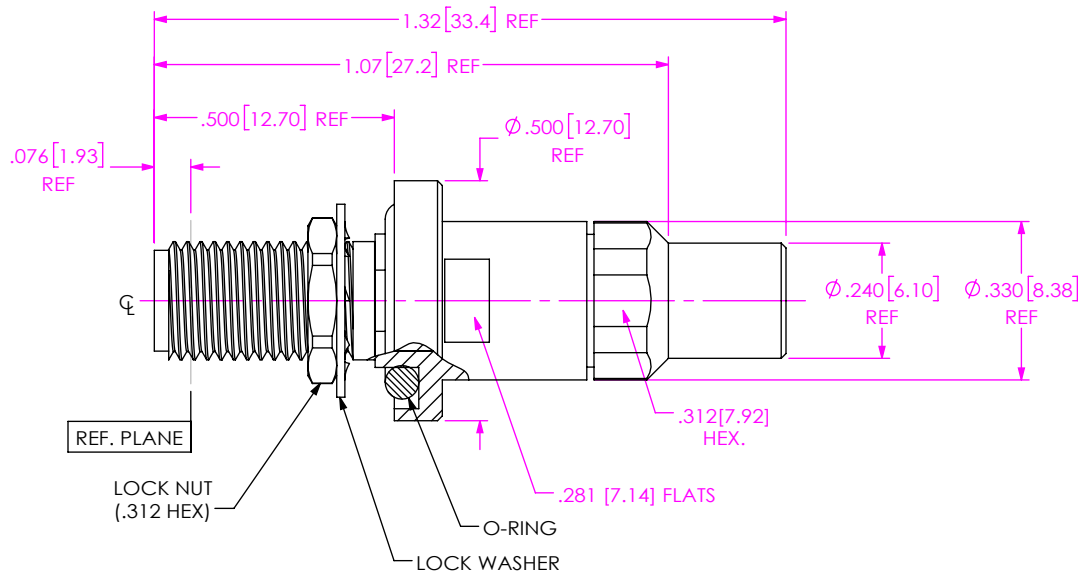
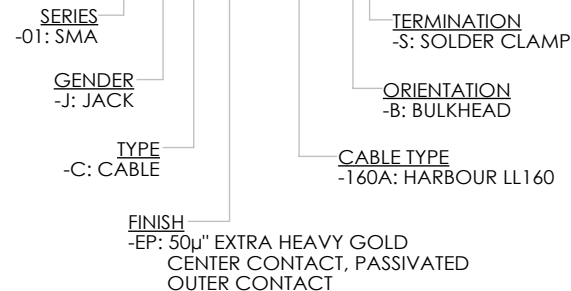
DO NOT SCALE FROM THIS PRINT



RECOMMENDED MOUNTING HOLE

DESIGNED & DIMENSIONED IN INCHES[MILLIMETERS]

PRF01-J-C-EP-160A-BS



EXPLODED VIEW  
NOT TO SCALE  
(FOR CLARITY ONLY)

NOTES:

- MATERIAL:  
BODY, LOCK WASHER, LOCK NUT, BUSHING & CLAMP NUT: STAINLESS STEEL.  
CONTACT: BERYLLIUM COPPER.  
SOLDER FERRULE: BRASS.  
O-RING: SILICONE RUBBER.  
INSULATOR: TEFLON FLUOROCARBON.  
DIELECTRIC BEADS: ULTEM 1000.
- FINISH:  
BODY, LOCK WASHER, LOCK NUT, BUSHING & CLAMP NUT: PASSIVATED.  
SOCKET & SOLDER FERRULE: GOLD OVER NICKEL PLATE.  
50 µIN MIN GOLD OVER 50 µIN MIN NICKEL.
- PCI P/N: 4044.

UNLESS OTHERWISE SPECIFIED, DIMENSIONS ARE IN INCHES.  
TOLERANCES ARE:  
DECIMALS ANGLES  
.XX: ±.01 [0.3] 1°  
.XXX: ±.005 [0.13]  
.XXXX: ±.0005 [0.013]

**PROPRIETARY NOTE**  
THIS DOCUMENT CONTAINS CONFIDENTIAL AND PROPRIETARY INFORMATION AND ALL DESIGN, MANUFACTURING, REPRODUCTION, USE, PATENT RIGHTS AND SALES RIGHTS ARE EXPRESSLY RESERVED BY SAMTEC, INC. THIS DOCUMENT SHALL NOT BE DISCLOSED, IN WHOLE OR PART, TO ANY UNAUTHORIZED PERSON OR ENTITY NOR REPRODUCED, TRANSFERRED OR INCORPORATED IN ANY OTHER PROJECT IN ANY MANNER WITHOUT THE EXPRESS WRITTEN CONSENT OF SAMTEC, INC.



520 PARK EAST BLVD., NEW ALBANY, IN 47150  
PHONE: 812-944-6733 FAX: 812-948-5047  
e-Mail: info@SAMTEC.com code 55322

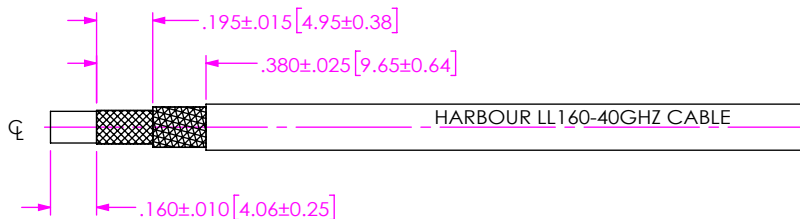
DO NOT SCALE DRAWING

SHEET SCALE: 2.5:1

DESCRIPTION: SMA BULKHEAD JACK, SOLDER CLAMP FOR HARBOUR LL160-40GHZ CABLE

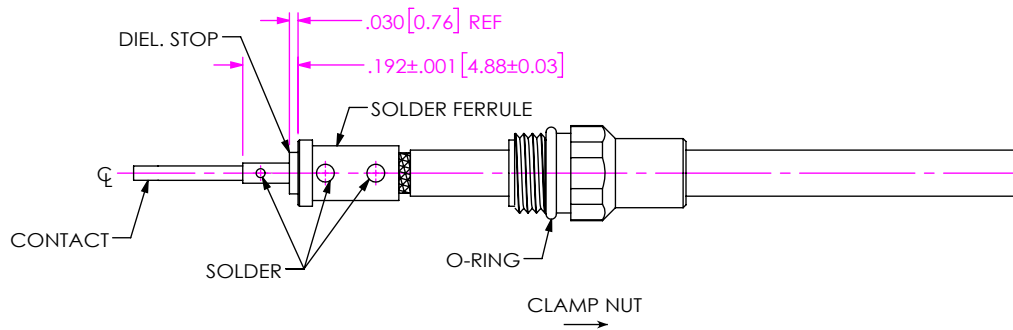
DWG. NO. PRF01-J-C-EP-160A-BS

BY: EVE L 01/13/2021 SHEET 1 OF 2



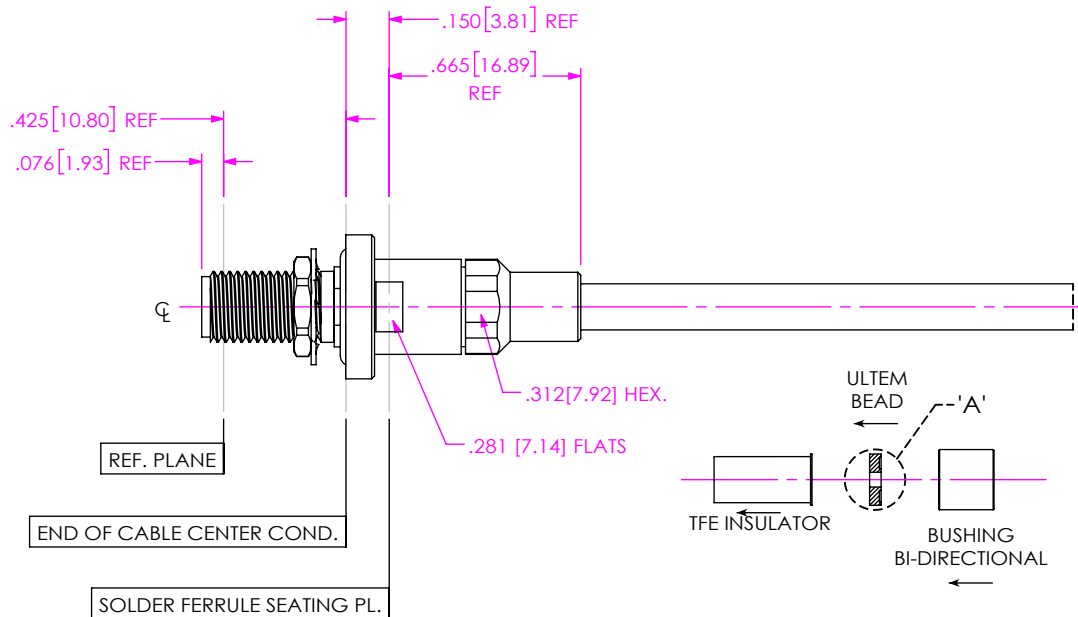
1A. TRIM CABLE TO EXPOSE DIELECTRIC AND BRAIDS AS SHOWN.

IN-PROCESS 1

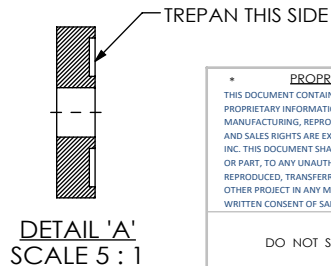


- 2A. INSTALL O-RING ONTO CLAMP NUT OVER CABLE IN ORIENTATION AS SHOWN.
- 2B. INSERT CABLE INTO SOLDER FERRULE UNTIL INNER BRAID IS SEATED AND SOLDER CABLE BRAIDS WHERE SHOWN.
- 2C. TRIM CABLE DIELECTRIC FLUSH WITH FACE OF SOLDER FERRULE.
- 2D. SLIDE DIELECTRIC STOP OVER CABLE CENTER CONDUCTOR AND SOLDER CONTACT FLUSH TO STOP TO DIMENSION SHOWN.

IN-PROCESS 2



- 3A. INSERT INSULATOR, FWD ULTEM BEAD AND BUSHING INTO CONNECTOR BODY IN ORIENTATION SHOWN.
- 3B. INSERT CABLE/CONTACT SUB-ASSEMBLY UNTIL SEATED AND TIGHTEN CLAMP NUT TO 25-35 IN-LBS.



IN-PROCESS 3

**PROPRIETARY NOTE**  
 THIS DOCUMENT CONTAINS CONFIDENTIAL AND PROPRIETARY INFORMATION AND ALL DESIGN, MANUFACTURING, REPRODUCTION, USE, PATENT RIGHTS AND SALES RIGHTS ARE EXPRESSLY RESERVED BY SAMTEC, INC. THIS DOCUMENT SHALL NOT BE DISCLOSED, IN WHOLE OR PART, TO ANY UNAUTHORIZED PERSON OR ENTITY NOR REPRODUCED, TRANSFERRED OR INCORPORATED IN ANY OTHER PROJECT IN ANY MANNER WITHOUT THE EXPRESS WRITTEN CONSENT OF SAMTEC, INC.

**samtec**  
 520 PARK EAST BLVD, NEW ALBANY, IN 47150  
 PHONE: 812-944-6733 FAX: 812-948-5047  
 e-Mail info@SAMTEC.com code 55322

DO NOT SCALE DRAWING  
 SHEET SCALE: 3:2

DESCRIPTION: SMA BULKHEAD JACK, SOLDER CLAMP FOR HARBOUR LL160-40GHZ CABLE

DWG. NO. PRF01-J-C-EP-160A-BS

BY: EVE L 01/13/2021 SHEET 2 OF 2