

ATLANTIC VERSION TERMINATOR INTERFACE ADAPTER	PART NUMBER	REVISION	DESCRIPTION	FEED TYPE	CONVERT TO	PART NUMBERS REQUIRED					
	2266395-1	A	FINE CRIMP HEIGHT ADJUST	MECHANICAL	PNEUMATIC FEED	2119950-1	1338685-1	5-18022-5	2119641-1	2119799-1	2063440-1
	2266395-2	A	FINE CRIMP HEIGHT ADJUST	PNEUMATIC	SERVO LATCH PLATE	2119951-1	-	8-2266395-5	1901094-3	-	2168400-6 (QUANTITY 2)
					SMART APPLICATOR	2161326-1	-	8-2266395-4	-	-	
					MECHANICAL FEED	2119949-1	1338685-1	5-18022-5	2119653-1	-	-
	2266395-5	A	FINE CRIMP HEIGHT ADJUST	SERVO LATCH PLATE ⁴	SERVO LATCH PLATE	2119951-1	-	8-2266395-5	1901094-3	-	2168400-6 (QUANTITY 2)
					SMART APPLICATOR	2161326-1	-	8-2266395-4	-	-	
	2266395-6	A	NON-CRIMP HEIGHT ADJUST	SERVO LATCH PLATE ⁴	SERVO LATCH PLATE ¹²	MECHANICAL FEED	2119949-1	1338685-1	5-18022-5	2119653-1	-
PNEUMATIC FEED						2119950-1	1338685-1	5-18022-5	2119641-1	2119799-1	2063440-1
2266395-7	A	FINE CRIMP HEIGHT ADJUST	NONE	-	-	-	-	-	-	-	-
7-2266395-7	A	CRIMP TOOLING KIT	-	-	-	-	-	-	-	-	-

APPLICATOR DATA		
CRIMP SIZE	TYPE	
WIRE 1.98 mm [.078]	F	
INSUL 3.94 mm [.155]	O	
APPLICATOR INSTRUCTIONS 408-10389		

TERMINAL DATA: DELPHI TERMINAL DELPHI CRIMP SPECIFICATION	
TERMINAL NAME: TERMINAL	
WIRE STRIP LENGTH 4.80-5.56 mm [.189-.219 IN]	INSULATION DIAMETER RANGE Ø1.60-2.20 mm [.063-.087 IN]
TERMINAL APPLICATION SPECIFICATION 12176636 PG 4,6 OF 7	
TERMINALS APPLIED	
TE TERMINAL 1949139-1	DELPHI TERMINAL 12176636
TE SEAL 2113511-1	DELPHI SEAL 15324818

WIRE SIZE	CRIMP HEIGHT mm [INCH]	CRIMP HEIGHT REFERENCE SETTING
1.25mm2	1.35+/-0.05 [.053+/-0.002]	7.4
1.00mm2	1.30+/-0.05 [.051+/-0.002]	8.0
0.75mm2	1.20+/-0.05 [.047+/-0.002]	9.8

- 1 RECOMMENDED SPARE PARTS
- 2 GREASE BEARING SURFACES LIGHTLY
- 3 LUBRICATE DAILY PER THE APPLICATOR INSTRUCTION SHEET SUPPLIED WITH THE APPLICATOR.
- 4 APPLICATOR SPECIFIC DATA TO BE ENTERED INTO BLANK MEMORY CHIP AT ASSEMBLY. SEE BELOW FOR PART NUMBER:
 MECHANICAL FEED WITH "SMART APPLICATOR" CONVERSION: 8-2266395-4
 PNEUMATIC FEED WITH "SMART APPLICATOR" CONVERSION: 8-2266395-4
 SERVO FEED WITH "FINE CRIMP HEIGHT ADJUST": 8-2266395-5
 SERVO FEED WITH "NON-CRIMP HEIGHT ADJUST": 8-2266395-6
- 5 ADJUSTMENT OF THE STRIPPER MAY BE REQUIRED WHEN MOVING THE APPLICATOR BETWEEN BENCH AND LEADMAKER APPLICATIONS.
- 6 APPLY PART NUMBER 1-23419-5 LOCTITE TO THREADS OF ITEM 62. APPLY PART NUMBER 2-23419-6 LOCTITE TO THREADS OF ITEM 242. FOR -6 ONLY APPLY PART NUMBER 1-23419-5 LOCTITE TO THREADS OF ITEM 37.
- 7 GREASE THREADS, GROOVE AND O-RING ON ITEMS 35 & 252.
- 8 MAGNET, ITEM 166 MUST BE ORIENTED CORRECTLY IN ORDER TO PROPERLY ACTUATE THE COUNTER.
- 9 CRIMP HEIGHT REFERENCE SETTING WAS THE SETTING USED WHEN THE APPLICATOR WAS QUALIFIED AT THE FACTORY. ADJUSTMENT MAY BE NECESSARY WHEN RUNNING APPLICATOR IN THE FIELD.
- 10 SPARE FEED CAM STORAGE LOCATION REFER TO INSTRUCTION SHEET FOR ADDITIONAL INFORMATION.
- 11 TO CONVERT THE APPLICATOR TO A NON-CARRIER CUTTING STYLE, REMOVE ITEM 13 AND ATTACH TO THE LOCATION ON THE BACK SIDE OF THE HOUSING. REFER TO INSTRUCTION SHEET FOR ADDITIONAL INFORMATION.
- 12 WHEN ASSEMBLING A NON CRIMP HEIGHT ADJUST APPLICATOR (-6) USE SHIMS FROM ITEM 260 TO ACHIEVE A NOMINAL SHIM HEIGHT OF 4.45. THIS APPLICATOR APPLIES TERMINAL WITH A SEAL.
- 14 APPLY TORO-SEAL IN ALLEN SOCKET TO FILL HOLE AFTER FLAT HD HAS BEEN ADJUSTED TO CORRECT HEIGHT AT QUALIFICATION. APPLY #1-23419-5 LOC-TITE TO THREADS.

***WARNING**
 ON INSTALLATION, SET WIRE DISC, ITEM 40 TO LARGEST WIRE SIZE SETTING. USE OF SETTINGS BELOW MINIMUM REQUIRED CRIMP HEIGHT SETTING WILL CAUSE DAMAGE TO CRIMP TOOLING.

ATLANTIC VERSION
 Shown on sheets 1 of 4 & 2 of 4
 (Pacific version shown on sheets 3 of 4 & 4 of 4)

SET UP GAUGE	LOC	DIST	REVISIONS			
2119599-1	A	66	P	DATE	BY	APPV
			1	DEVELOPMENT	02JUL2014	JH TE
			A	RELEASED	15SEP2014	JH TE

P	LTN	DESCRIPTION	DATE	BY	APPV
-	-	1 - - -	2119957-2	APPLICATOR SHIM PACK	260
-	1	- 1 1 1	8-21084-0	O-RING, .676 ID, .070 DIA. MAT.	252
-	-	- - 1 -	2119640-1	PUSH ROD, AIR FEED	250
-	-	- - 1 -	2079988-1	BUSHING, LCH5-12, MISUMI	249
-	-	- - 1 -	2119641-1	FEED CAM, AIR FEED	248
-	1	- 1 1 1	2119798-1	DETENT PIN	247
-	1	- 1 1 1	1-22279-3	SPRING, COMPRESSION	246
-	-	1 - - -	2119758-1	RAM, AMP STYLE, SIDE FEED, NON-ADJ.	245
-	1	1 1 1 1	2119082-3	CAM, SNAIL, INSULATION ADJUSTMENT	244
-	1	1 1 1 1	2079764-1	WASHER, WAVE SPRING, CREST-TO-CREST	243
-	1	1 1 1 1	2119083-1	RETAINER, INSULATION DIAL	242
-	1	1 1 1 1	7-18023-7	SCR, SKT HD CAP M3 X 4.0	241
-	-	2 2 - -	2168400-6	SHCS, LOW HEAD, RoHS, M5 X 16	240
-	-	- - - 1	2119580-1	MECHANICAL FEED ASSEMBLY	239
-	-	- - 1 -	2063440-1	AIR FEED MODULE	238
-	-	1 1 - -	2119740-2	TAG, IDENTIFICATION	213
-	-	1 1 - -	1901094-3	SPACER, FEEDER	198
-	-	- - 2 -	21045-3	RING, RETAIN, EXTERN, 3/16 CRESCENT	172
-	1	1 1 1 1	994969-1	MAGNET, RARE EARTH HIGH ENERGY	166
-	REF	REF REF REF REF	994970-2	COUNTER, MAGNETIC	164
-	-	- - 1 -	240638-1	SPRING, FEED FINGER	163
-	-	- - 1 -	3-23627-7	PIN, RETAIN, GRVD, 3/16 X .854	137
-	-	- - 1 -	2119799-1	HOLDER, FEED FINGER, AF	136
-	-	REF REF - -	SEE NOTE 4	MEMORY CHIP, PROGRAMMED	135
-	-	1 1 - -	1633743-1	SERVO FEED LATCH ASM	133
-	-	REF REF - -	2119944-1	FEED FINGER ASSEMBLY, SF	117
-	1	1 1 1 1	455888-5	SPACER, CRIMPER	82
-	1	1 1 1 1	2119956-1	DOCUMENTATION PACKAGE	71
-	1	- - 1 1	2119740-1	TAG, IDENTIFICATION	67
-	2	2 2 2 2	2168078-1	SCREW, DRIVE, RH, RoHS, 2 x .188	66
-	1	- 1 1 1	2119793-1	LIMITER, ADJUSTMENT BOLT	63
-	3	- 3 3 3	992763-5	SCR, SET, SOC, CONE POINT, M3 X 4.0	62
-	1	1 1 1 1	2079383-4	SCR, BHSC, RoHS (M4 X 8)	60
-	-	- - 1 1	5-18022-5	SCR, HEX HD CAP, M4 X 6.0	59
-	1	1 1 1 1	985575-3	SCR, FLT SKT HD CAP M3 X 10.0	57
-	-	- - 1 1	1338685-1	PAWL, FEED	56
-	4	4 4 4 4	2168400-1	SHCS, LOW HEAD, RoHS, M4 X 12	54
-	2	2 2 2 2	2168083-2	SCR, SKT HD CAP, RoHS, M4 X 8.0	53
-	-	- - 1 2	18023-9	SCR, SKT HD CAP M4 X 6.0	49
-	-	- - - 1	2119652-1	FEED CAM, PRE FEED	48
-	-	- - - 1	2119653-1	FEED CAM, POST FEED	47
-	1	1 1 1 1	2119656-9	APPLICATOR BASIC ASSEMBLY, SF	46
-	1	- 1 1 1	2119370-1	RAM, AMP STYLE, SIDE FEED	44
-	1	1 1 1 1	2079383-7	SCR, BHSC, RoHS (M8 X 25)	41
-	1	- 1 1 1	2119645-1	DISC, NUMBERED FA WIRE ADJUSTMENT	40
-	1	- 1 1 1	2119957-1	APPLICATOR SHIM PACK	39
-	1	1 1 1 1	1-2119644-2	RAM WASHER, PRECISION	38
-	1	1 1 1 1	2119085-1	FA HEAD, ATLANTIC STYLE	37
-	1	- 1 1 1	2119092-1	BOLT, ADJUSTMENT	35
-	1	1 1 1 1	1752356-3	SUPPORT, TERMINAL	34
-	2	2 2 2 2	2079383-5	SCR, BHSC, RoHS (M4 X 20)	33
-	1	1 1 1 1	2161328-1	HEX HEAD, FLANGED, M5 X 8mm LONG	32
-	1	1 1 1 1	1320908-3	SPACER, STRIP GUIDE	30
-	1	1 1 1 1	2119959-1	ASSEMBLY, STRIP GUIDE	29
-	1	1 1 1 1	455888-3	SPACER, CRIMPER	28
-	1	1 1 1 1	1320928-2	STRIP GUIDE	24
-	1	1 1 1 1	2168083-2	SCR, SKT HD CAP, RoHS, M4 X 8.0	21
-	2	2 2 2 2	1-18028-2	WASHER, FLAT, REG M4	20
-	1	1 1 1 1	2119533-1	STRIPPER, SIDE FEED	19
-	1	1 1 1 1	5-690518-2	HOLD DOWN, TERMINAL	18
-	1	1 1 1 1	2119806-1	INSERT, SHEAR	13
-	1	1 1 1 1	3-22280-3	SPRING, COMPRESSION	12
-	1	1 1 1 1	1-356885-4	STOP, SHEAR	11
-	1	1 1 1 1	2119805-1	SHEAR HOLDER, FRONT	10
-	1	1 1 1 1	318707-1	FLOATING SHEAR, FRONT	9
-	1	1 1 1 1	9-1633927-0	ANVIL, COMBINATION	8
-	1	1 1 1 1	1-240641-3	SPACER	7
-	-	- - - -	-	-	6
-	1	1 1 1 1	2-2119781-4	DEPRESSOR, SHEAR	5
-	1	1 1 1 1	2-238011-1	BLOCK, CRIMPER SPACER	4
-	1	1 1 1 1	3-1633965-7	CRIMPER, INSULATION O PREMIUM	3
-	1	1 1 1 1	455888-8	SPACER, CRIMPER	2
-	1	1 1 1 1	8-1633305-0	CRIMPER, WIRE PREMIUM	1

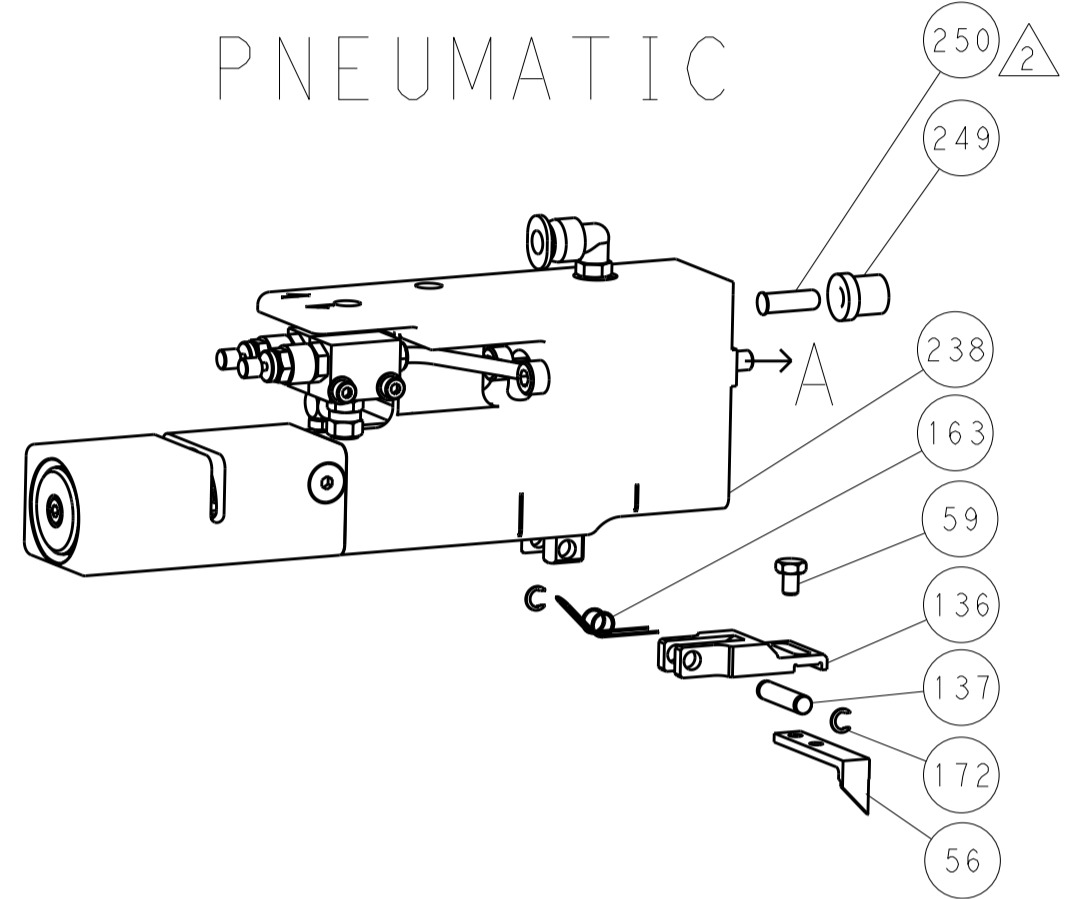
DIMENSIONS:	TOLERANCES UNLESS OTHERWISE SPECIFIED:	OWN	DATE	TE Connectivity
mm	0 PLC ±.5 1 PLC ±.5 2 PLC ±.5 3 PLC ±.5 4 PLC ±.5 ANGLES ±.0001	J.HOU	2JULY2014	Harrisburg, PA 17105-3608
		CHK	2JULY2014	
		APVD	2JULY2014	
		U. GUO	2JULY2014	
		NAME	Ocean Side Feed Applicator	
		PRODUCT SPEC		
		APPLICATION SPEC		
		SIZE	CAGE CODE	DRAWING NO
		WTGHT	A1 00779	©=2266395
		Customer Accessible Production Drawing		
		SCALE	1:2	SHEET 1 OF 4

LOC	DIST	REV	DATE	BY	APP'D
A	66				

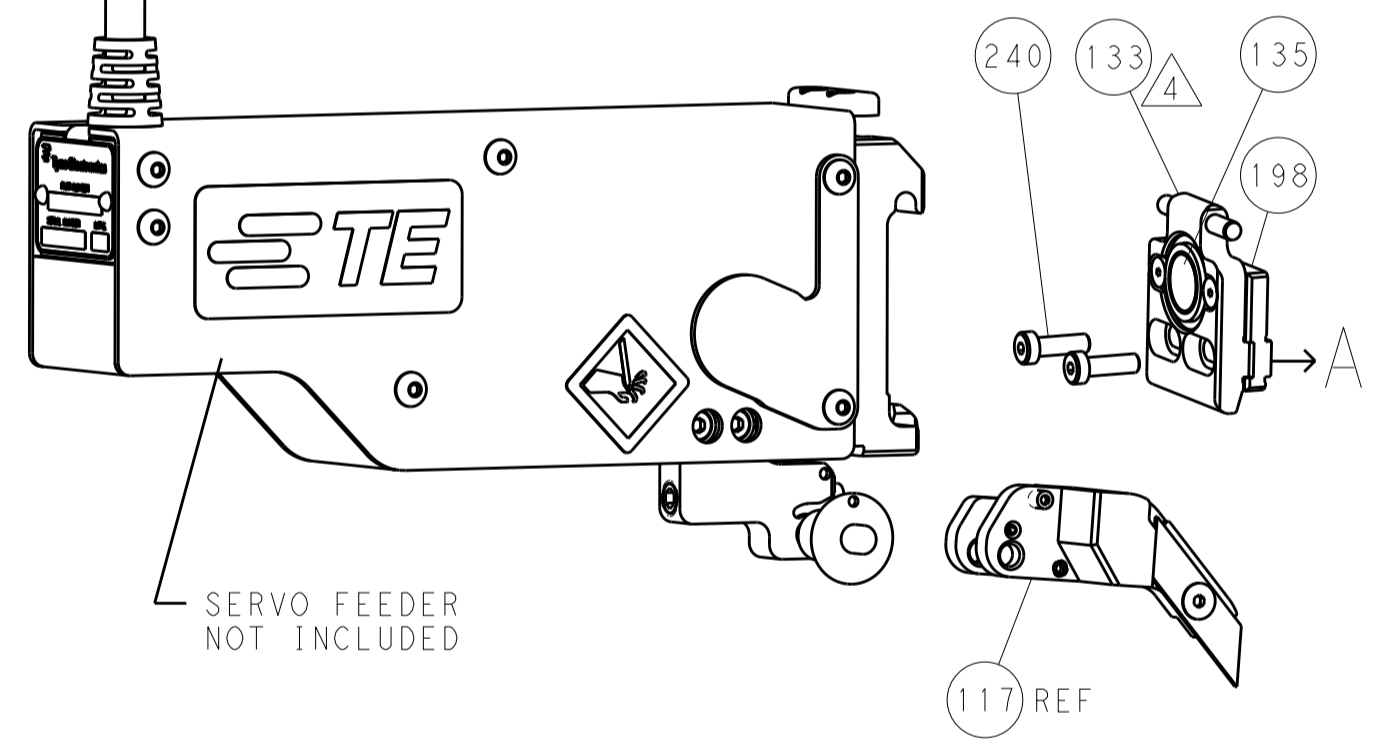
FEED TYPE MECHANICAL



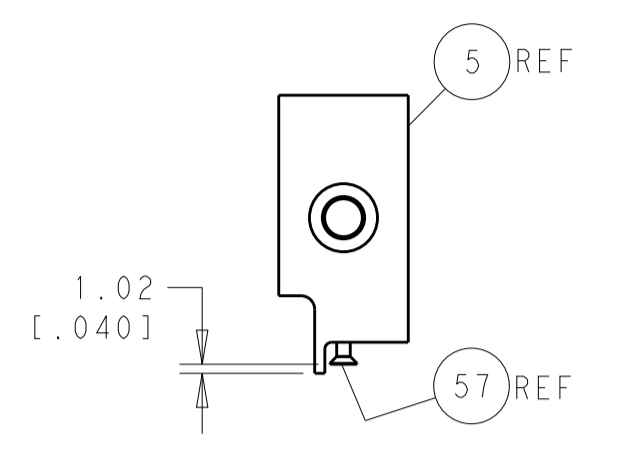
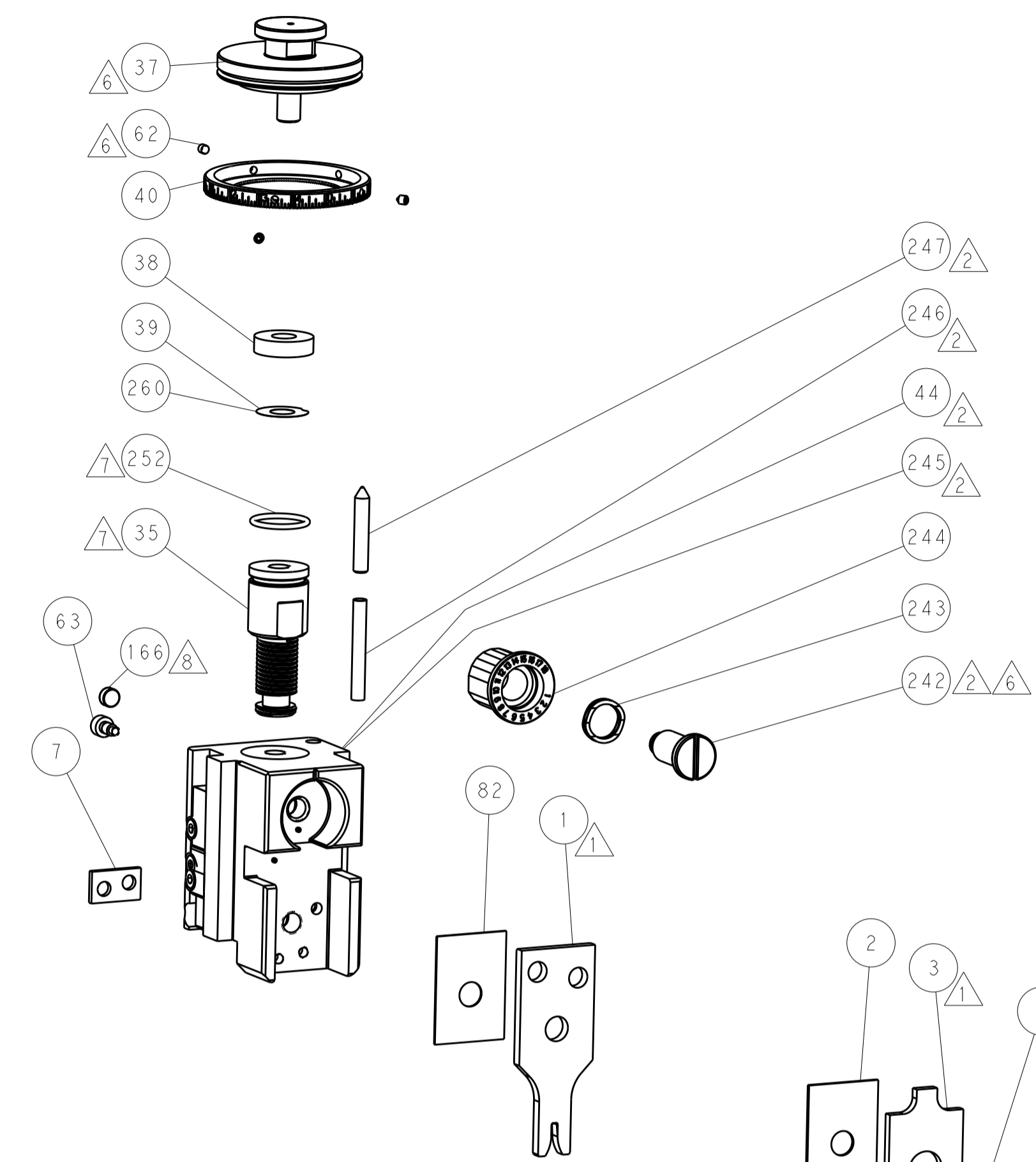
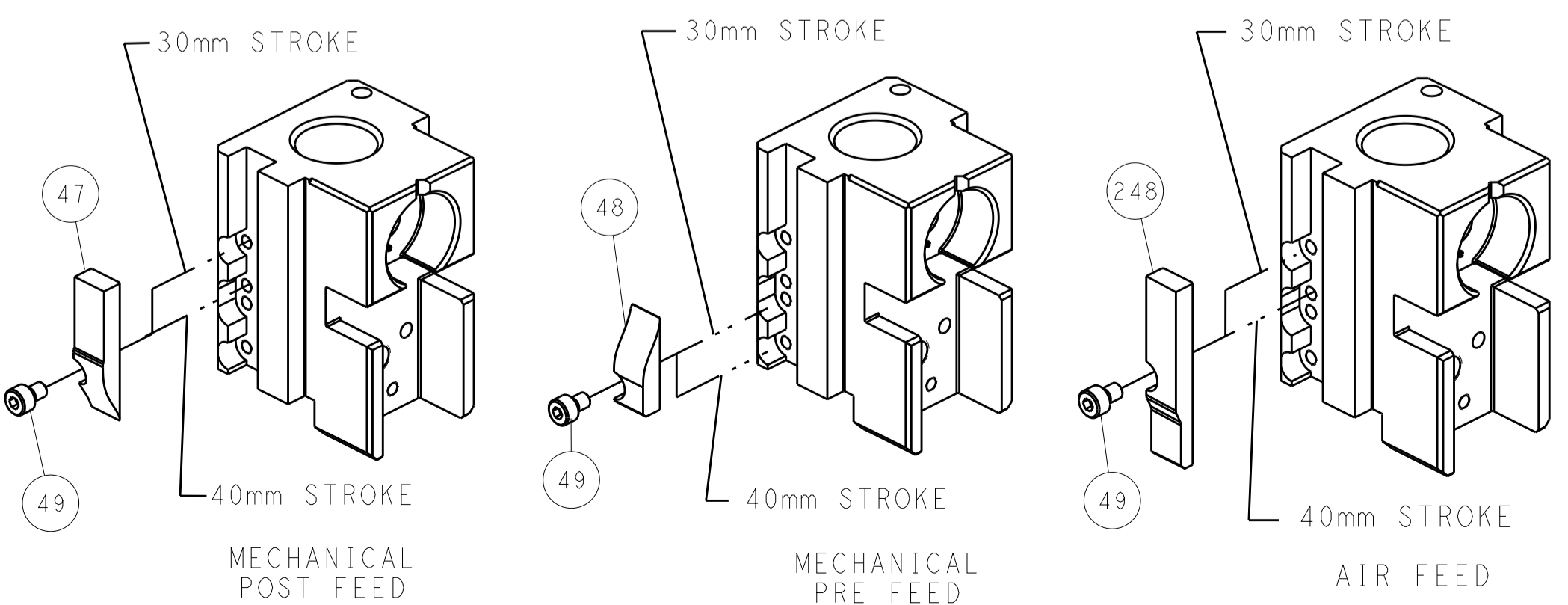
PNEUMATIC



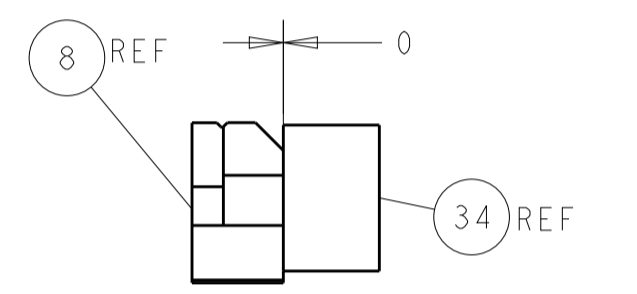
SERVO LATCH PLATE



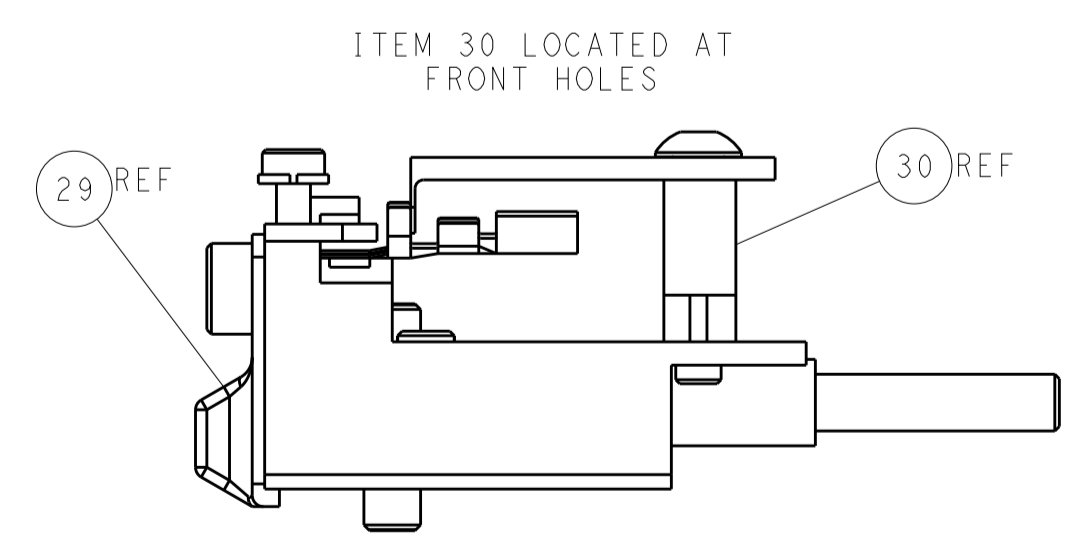
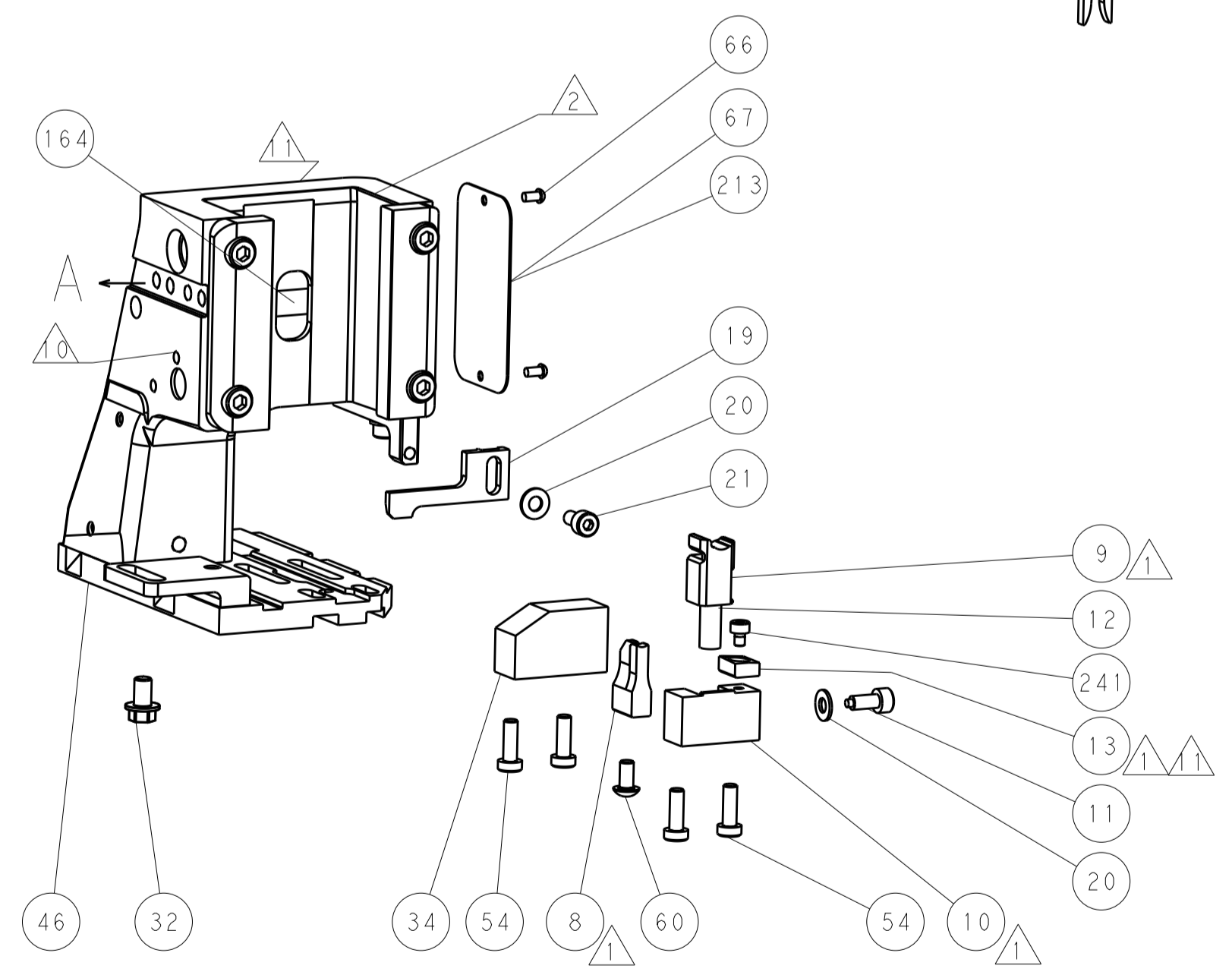
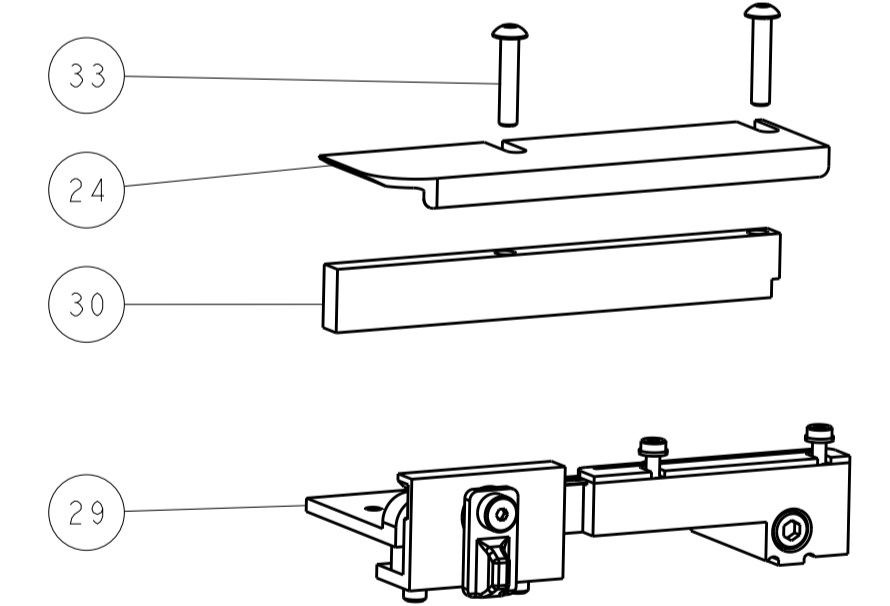
CAM POSITIONS



SHEAR DEPRESSOR DETAIL



TERMINAL SUPPORT LOCATION



FEED TRACK POSITION GUIDE BY INSULATION BARREL

ATLANTIC VERSION
 Shown on sheets 1 of 4 & 2 of 4
 (Pacific version shown on sheets 3 of 4 & 4 of 4)

DIMENSIONS:		TOLERANCES UNLESS OTHERWISE SPECIFIED:		DWG: J.HOU 2JULY2014		TE Connectivity	
mm		0 PLC ±.5		CHK: Y.YIN 2JULY2014		Harrisburg, PA 17105-3608	
Ø		1 PLC ±0.5		APP'D: H.GUO 2JULY2014		NAME: Ocean Side Feed Applicator	
H		3 PLC ±0.13		PRODUCT SPEC		SIZE: CAGE CODE: DRAWING NO: RESTRICTED TO	
D		4 PLC ±0.013		APPLICATION SPEC		A11 00779 ©=2266395	
R		5 PLC ±0.001		WEIGHT		SCALE: 1:2 SHEET 2 OF 4 REV A	
FINISH		MATERIAL		Customer Accessible Production Drawing		SHEETS 3 & 4 ARE NOT REQUIRED FOR ATLANTIC VERSION	

THIS DRAWING IS UNPUBLISHED. RELEASED FOR PUBLICATION
 COPYRIGHT © BY TYCO ELECTRONICS CORPORATION. ALL RIGHTS RESERVED.

PACIFIC VERSION TERMINATOR INTERFACE ADAPTER	PART NUMBER	REVISION	DESCRIPTION	FEED TYPE	APPLICATOR STYLE CONVERSION CHART						
					CONVERT TO	PART NUMBERS REQUIRED					
	2-2266395-1	A	FINE CRIMP HEIGHT ADJUST	MECHANICAL	PNEUMATIC FEED	2119950-1	1338685-1	5-18022-5	2119641-2	2119799-1	2063440-1
					SERVO LATCH PLATE	2119951-1	-	8-2266395-5	1901094-3	-	2168400-6 (QUANTITY 2)
					SMART APPLICATOR	2161326-1	-	8-2266395-4	-	-	-
	2-2266395-2	A	FINE CRIMP HEIGHT ADJUST	PNEUMATIC	MECHANICAL FEED	2119949-1	1338685-1	5-18022-5	2119653-2	-	-
					SERVO LATCH PLATE	2119951-1	-	8-2266395-5	1901094-3	-	2168400-6 (QUANTITY 2)
					SMART APPLICATOR	2161326-1	-	8-2266395-4	-	-	-
	2-2266395-5	A	FINE CRIMP HEIGHT ADJUST	SERVO LATCH PLATE ⁴	MECHANICAL FEED	2119949-1	1338685-1	5-18022-5	2119653-2	-	-
					PNEUMATIC FEED	2119950-1	1338685-1	5-18022-5	2119641-2	2119799-1	2063440-1
	2-2266395-7	A	FINE CRIMP HEIGHT ADJUST	NONE	-	-	-	-	-	-	-
	7-2266395-7	A	CRIMP TOOLING KIT	-	-	-	-	-	-	-	-

APPLICATOR DATA		
CRIMP	SIZE	TYPE
WIRE	1.98 mm [.078]	F
INSUL	3.94 mm [.155]	O
APPLICATOR INSTRUCTIONS 408-10389		

TERMINAL DATA: DELPHI TERMINAL DELPHI CRIMP SPECIFICATION	
TERMINAL NAME: TERMINAL	
WIRE STRIP LENGTH 4.80-5.56 mm [1.89-.219 IN]	INSULATION DIAMETER RANGE Ø1.60-2.20 mm [.063-.087 IN]
TERMINAL APPLICATION SPECIFICATION 12176636 PG 4,6 OF 7	
TERMINALS APPLIED	
TE TERMINAL	DELPHI TERMINAL
1949139-1	12176636
TE SEAL	DELPHI SEAL
2113511-1	15324818

WIRE SIZE	CRIMP HEIGHT mm [INCH]	CRIMP HEIGHT REFERENCE SETTING
1.25mm2	1.35+/-0.05 [1.053+/-0.02]	7.4
1.00mm2	1.30+/-0.05 [1.051+/-0.02]	8.0
0.75mm2	1.20+/-0.05 [1.047+/-0.02]	9.8

- RECOMMENDED SPARE PARTS
- GREASE BEARING SURFACES LIGHTLY
- 3. LUBRICATE DAILY PER THE APPLICATOR INSTRUCTION SHEET SUPPLIED WITH THE APPLICATOR.
- APPLICATOR SPECIFIC DATA TO BE ENTERED INTO BLANK MEMORY CHIP AT ASSEMBLY. SEE BELOW FOR PART NUMBER:
 MECHANICAL FEED WITH "SMART APPLICATOR" CONVERSION: 8-2266395-4
 PNEUMATIC FEED WITH "SMART APPLICATOR" CONVERSION: 8-2266395-4
 SERVO FEED WITH "FINE CRIMP HEIGHT ADJUST": 8-2266395-5
- 5. ADJUSTMENT OF THE STRIPPER MAY BE REQUIRED WHEN MOVING THE APPLICATOR BETWEEN BENCH AND LEADMAKER APPLICATIONS.
- APPLY PART NUMBER 1-23419-5 LOCTITE TO THREADS OF ITEM 62.
 APPLY PART NUMBER 2-23419-6 LOCTITE TO THREADS OF ITEM 242.
- GREASE THREADS, GROOVE AND O-RING ON ITEMS 139 & 152.
- MAGNET MUST BE ORIENTED CORRECTLY IN ORDER TO PROPERLY ACTUATE THE COUNTER.
- CRIMP HEIGHT REFERENCE SETTING WAS THE SETTING USED WHEN THE APPLICATOR WAS QUALIFIED AT THE FACTORY. ADJUSTMENT MAY BE NECESSARY WHEN RUNNING APPLICATOR IN THE FIELD.
- SPARE FEED CAM STORAGE LOCATION REFER TO INSTRUCTION SHEET FOR ADDITIONAL INFORMATION.
- TO CONVERT THE APPLICATOR TO A NON-CARRIER CUTTING STYLE, REMOVE ITEM 13 AND ATTACH TO THE LOCATION ON BACK SIDE OF THE HOUSING. REFER TO INSTRUCTION SHEET FOR ADDITIONAL INFORMATION.
- THIS APPLICATOR APPLIES TERMINAL WITH A SEAL.
- APPLY TORQ-SEAL IN ALLEN SOCKET TO FILL HOLE AFTER FLAT HD HAS BEEN ADJUSTED TO CORRECT HEIGHT AT QUALIFICATION. APPLY #1-23419-5 LOC-TITE TO THREADS.

***WARNING**
 ON INSTALLATION, SET WIRE DISC, ITEM 40 TO LARGEST WIRE SIZE SETTING. USE OF SETTINGS BELOW MINIMUM REQUIRED CRIMP HEIGHT SETTING WILL CAUSE DAMAGE TO CRIMP TOOLING.

PACIFIC VERSION
 Shown on sheets 3 of 4 & 4 of 4
 (Atlantic version shown on sheets 1 of 4 & 2 of 4)

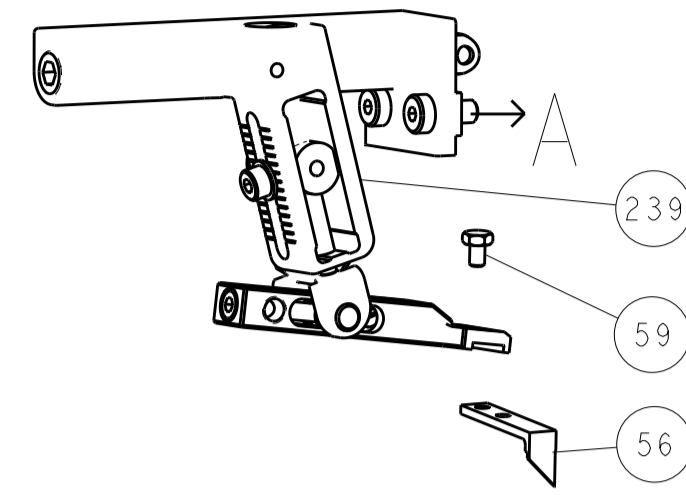
SET UP GAUGE	LOC	DIST	REVISIONS			
2119599-1	A	66	REV	DATE	BY	APPV
			-	SEE SHEET 1	-	-

-	1	1	1	1	2119782-1	FINE ADJUST HEAD ASM, PACIFIC STYLE	251
-	-	-	1	-	2119640-1	PUSH ROD, AIR FEED	250
-	-	-	1	-	2079988-1	BUSHING, LCH5-12, MISUMI	249
-	1	1	1	1	1-22279-3	SPRING, COMPRESSION	246
-	1	1	1	1	2119082-3	CAM, SNAIL, INSULATION ADJUSTMENT	244
-	1	1	1	1	2079764-1	WASHER, WAVE SPRING, CREST-TO-CREST	243
-	1	1	1	1	2119083-1	RETAINER, INSULATION DIAL	242
-	1	1	1	1	7-18023-7	SCR, SKT HD CAP M3 X 4.0	241
-	-	2	-	-	2168400-6	SHCS, LOW HEAD, RoHS, M5 X 16	240
-	-	-	-	1	2119580-1	MECHANICAL FEED ASSEMBLY	239
-	-	-	1	-	2063440-1	AIR FEED MODULE	238
-	-	-	1	-	2119740-2	TAG, IDENTIFICATION	213
-	-	1	-	-	1901094-3	SPACER, FEEDER	198
-	-	-	2	-	21045-3	RING, RETAIN, EXTERN, 3/16 CRESCENT	172
-	1	1	1	1	994969-1	MAGNET, RARE EARTH HIGH ENERGY	166
-	REF	REF	REF	REF	994970-2	COUNTER, MAGNETIC	164
-	-	-	1	-	240638-1	SPRING, FEED FINGER	163
-	1	1	1	1	8-21084-1	O-RING, .801 ID, .070 DIA. MAT.	152
-	-	-	1	-	2119641-2	FEED CAM, AIR FEED	151
-	1	1	1	1	2119798-2	DETENT PIN	145
-	1	1	1	1	2079383-8	SCR, BHSC, RoHS (M4 X 16)	144
-	4	4	4	4	2168400-5	SHCS, LOW HEAD, RoHS, M4 X 20	143
-	-	-	-	1	2119653-2	FEED CAM, POST FEED	142
-	1	1	1	1	1-2119656-0	APPLICATOR BASIC ASSEMBLY, SF	141
-	1	1	1	1	2119650-1	RAM, ASIAN STYLE, SIDE FEED	140
-	1	1	1	1	2119092-2	BOLT, ADJUSTMENT	139
-	-	-	1	-	3-23627-7	PIN, RETAIN, GRVD, 3/16 X .854	137
-	-	-	1	-	2119799-1	HOLDER, FEED FINGER, AF	136
-	-	REF	-	-	SEE NOTE 4	MEMORY CHIP, PROGRAMMED	135
-	-	1	-	-	1633743-1	SERVO FEED LATCH ASM	133
-	-	REF	-	-	2119944-1	FEED FINGER ASSEMBLY, SF	117
-	1	1	1	1	455888-5	SPACER, CRIMPER	82
-	1	1	1	1	2119956-1	DOCUMENTATION PACKAGE	71
-	1	-	1	1	2119740-1	TAG, IDENTIFICATION	67
-	2	2	2	2	2168078-1	SCREW, DRIVE, RH, RoHS, 2 x .188	66
-	1	1	1	1	2119793-1	LIMITER, ADJUSTMENT BOLT	63
-	3	3	3	3	992763-5	SCR, SET, SOC, CONE POINT, M3 X 4.0	62
-	-	-	1	1	5-18022-5	SCR, HEX HD CAP, M4 X 6.0	59
-	1	1	1	1	985575-3	SCR, FLT SKT HD CAP M3 X 10.0	57
-	-	-	1	1	1338685-1	PAWL, FEED	56
-	2	2	2	2	2168083-2	SCR, SKT HD CAP, RoHS, M4 X 8.0	53
-	-	-	1	2	18023-9	SCR, SKT HD CAP M4 X 6.0	49
-	-	-	-	1	2119652-1	FEED CAM, PRE FEED	48
-	1	1	1	1	2079383-7	SCR, BHSC, RoHS (M8 X 25)	41
-	1	1	1	1	2119645-1	DISC, NUMBERED FA WIRE ADJUSTMENT	40
-	1	1	1	1	2119957-1	APPLICATOR SHIM PACK	39
-	1	1	1	1	1-2119644-2	RAM WASHER, PRECISION	38
-	1	1	1	1	1752356-3	SUPPORT, TERMINAL	34
-	2	2	2	2	2079383-5	SCR, BHSC, RoHS (M4 X 20)	33
-	1	1	1	1	2161328-1	HEX HEAD, FLANGED, M5 x 8mm LONG	32
-	1	1	1	1	1320908-3	SPACER, STRIP GUIDE	30
-	1	1	1	1	2119959-1	ASSEMBLY, STRIP GUIDE	29
-	1	1	1	1	455888-3	SPACER, CRIMPER	28
-	1	1	1	1	1320928-2	STRIP GUIDE	24
-	1	1	1	1	2168083-2	SCR, SKT HD CAP, RoHS, M4 X 8.0	21
-	2	2	2	2	1-18028-2	WASHER, FLAT, REG M4	20
-	1	1	1	1	2119533-1	STRIPPER, SIDE FEED	19
-	1	1	1	1	5-690518-2	HOLD DOWN, TERMINAL	18
-	1	1	1	1	2119806-1	INSERT, SHEAR	13
-	1	1	1	1	3-22280-3	SPRING, COMPRESSION	12
-	1	1	1	1	1-356885-4	STOP, SHEAR	11
-	1	1	1	1	2119805-1	SHEAR HOLDER, FRONT	10
-	1	1	1	1	318707-1	FLOATING SHEAR, FRONT	9
-	1	1	1	1	9-1633927-0	ANVIL, COMBINATION	8
-	1	1	1	1	1-240641-3	SPACER	7
-	-	-	-	-	-	-	6
-	1	1	1	1	2-2119781-4	DEPRESSOR, SHEAR	5
-	1	1	1	1	2-238011-1	BLOCK, CRIMPER SPACER	4
-	1	1	1	1	3-1633965-7	CRIMPER, INSULATION O PREMIUM	3
-	1	1	1	1	455888-8	SPACER, CRIMPER	2
-	1	1	1	1	8-1633305-0	CRIMPER, WIRE PREMIUM	1

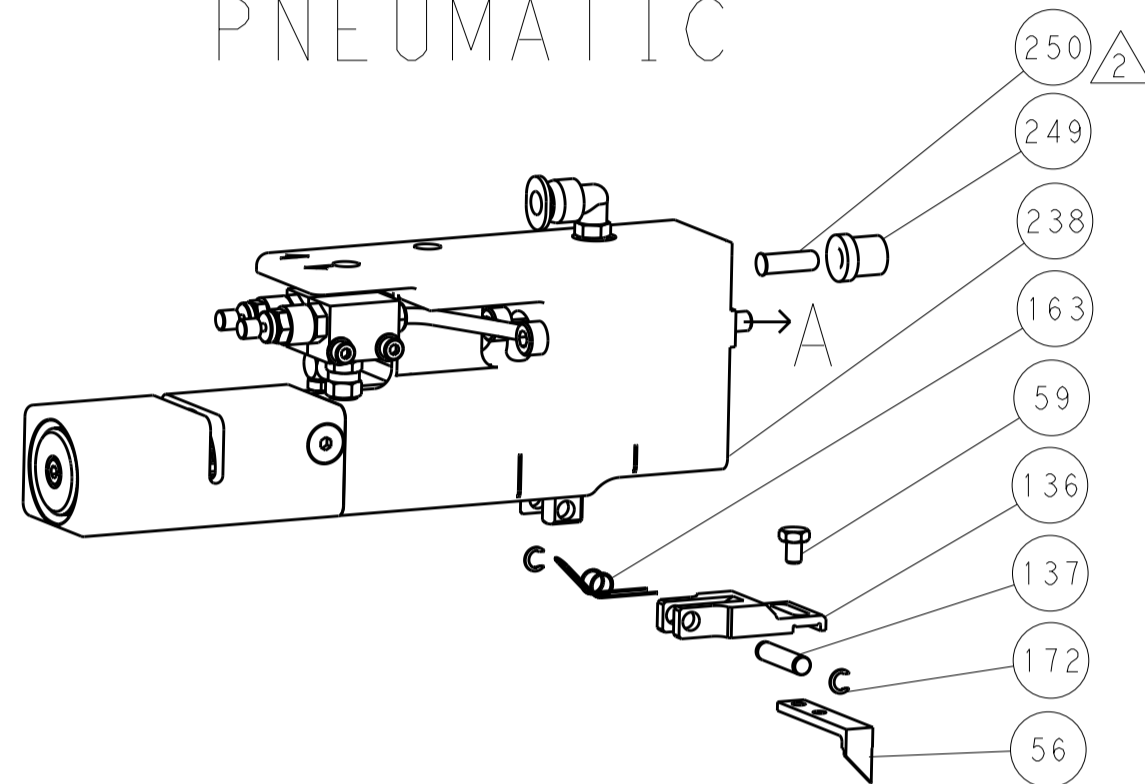
DIMENSIONS:		TOLERANCES UNLESS OTHERWISE SPECIFIED:		OWN	CHK	Y. YIN	APV	U. GUO	DATE	DESCRIPTION	ITEM NO	
mm	0 PLC ±.5	1 PLC ±0.5	2 PLC ±0.13	3 PLC ±0.013	4 PLC ±0.001	ANGLES ±.1	FINISH					
MATERIAL												
Customer Accessible Production Drawing										SCALE	1:2	
SHEET										3	OF	4
REV										A		

LOC		DIST		REVISIONS			
A	66	P	LTM	DESCRIPTION	DATE	DWN	APVD
		-		SEE SHEET 1			

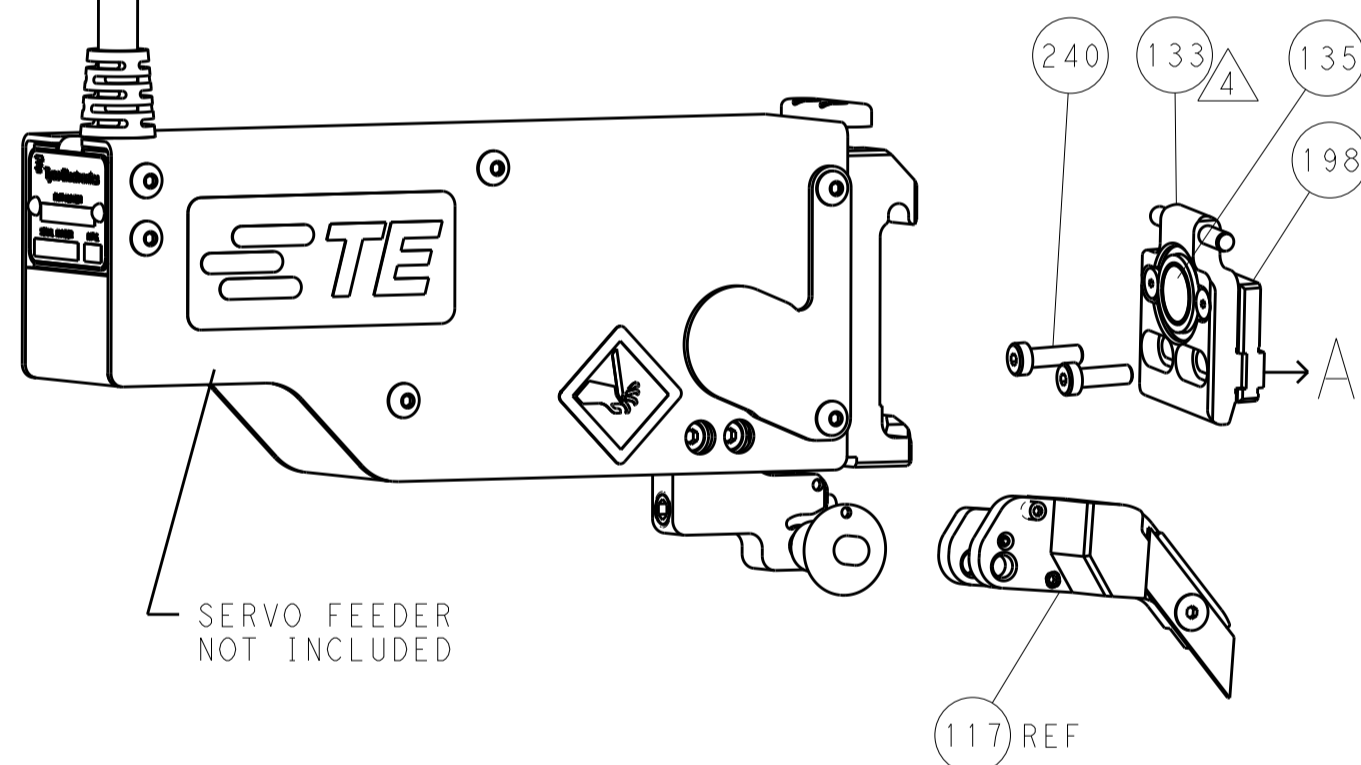
FEED TYPE MECHANICAL



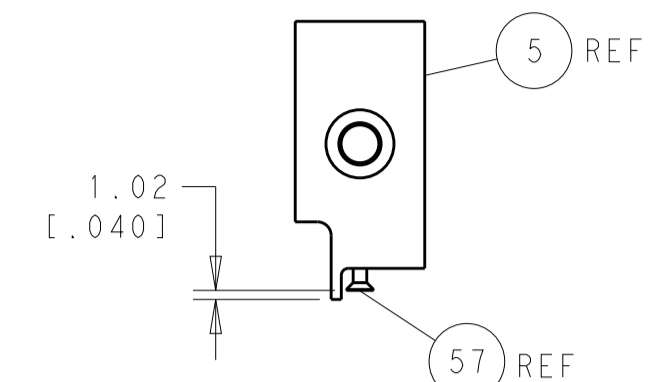
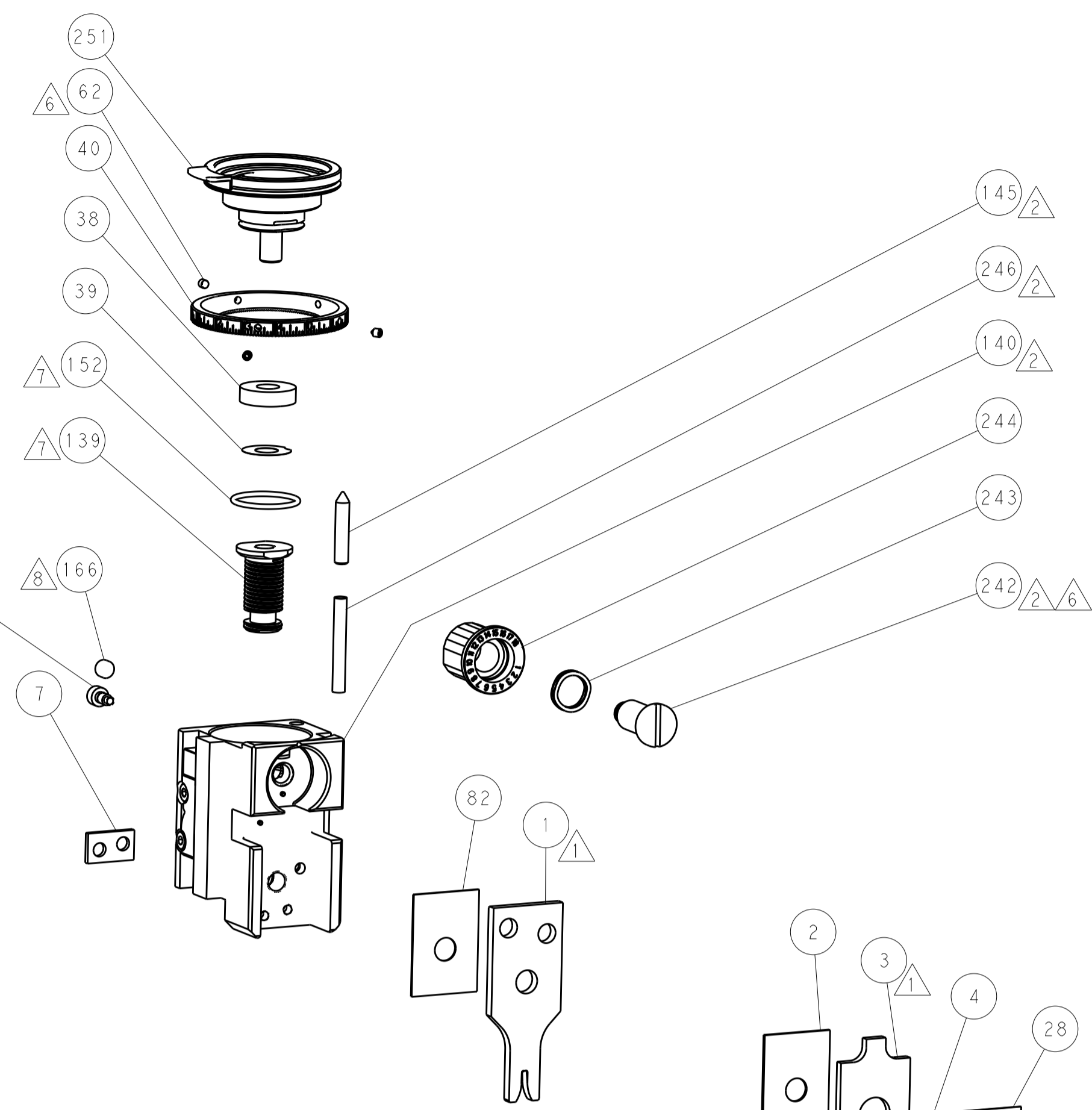
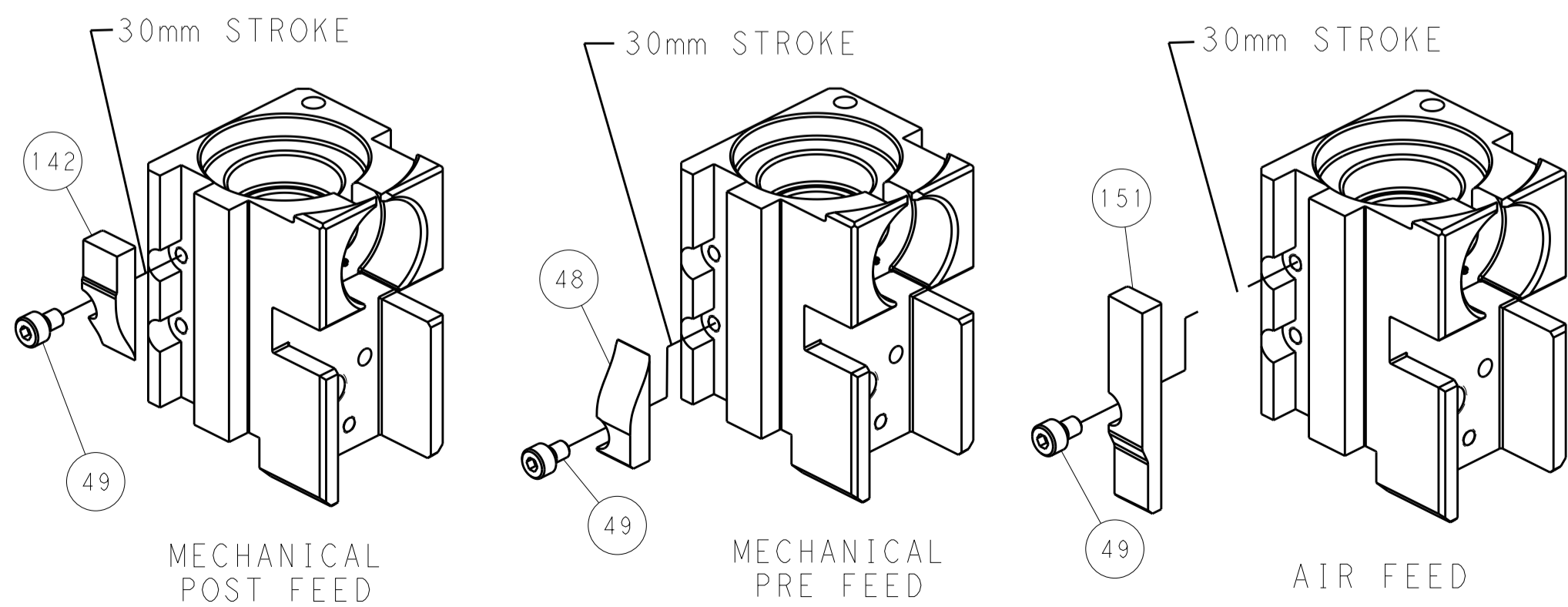
PNEUMATIC



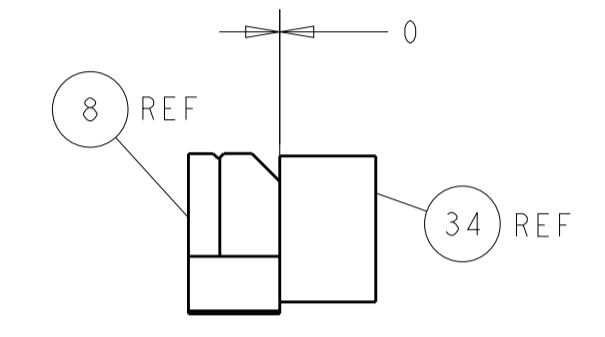
SERVO LATCH PLATE



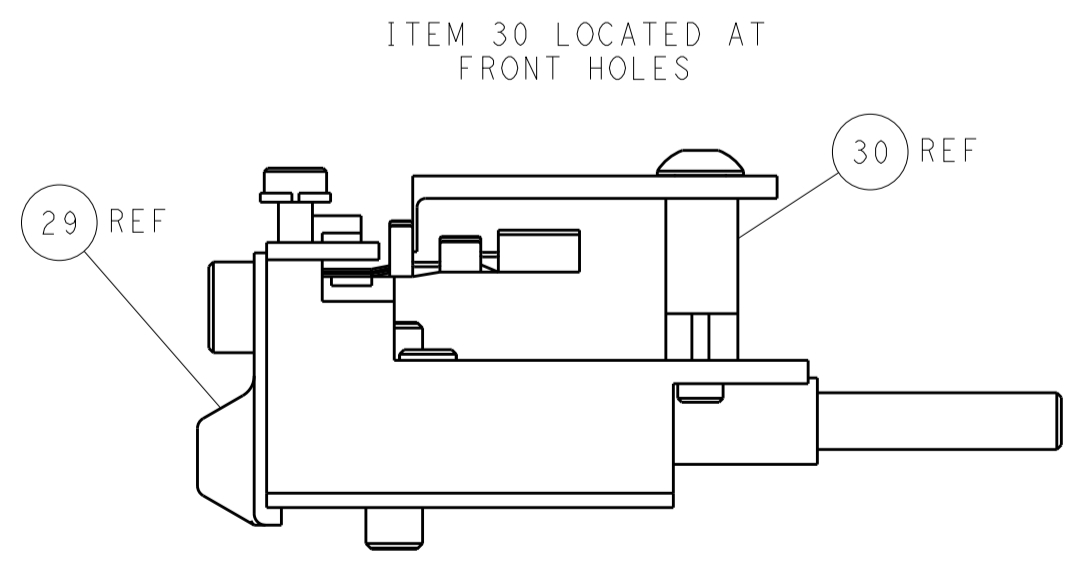
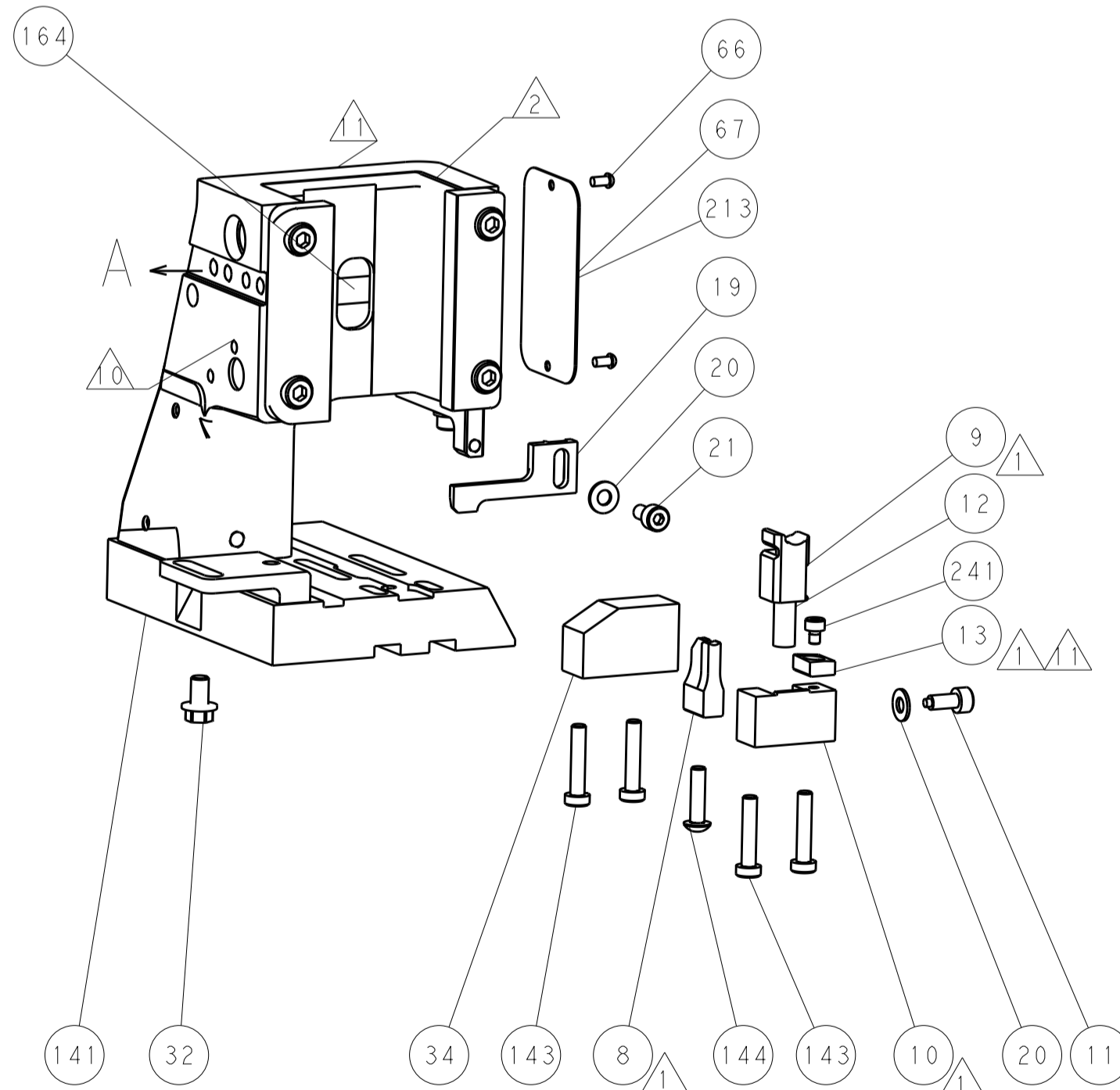
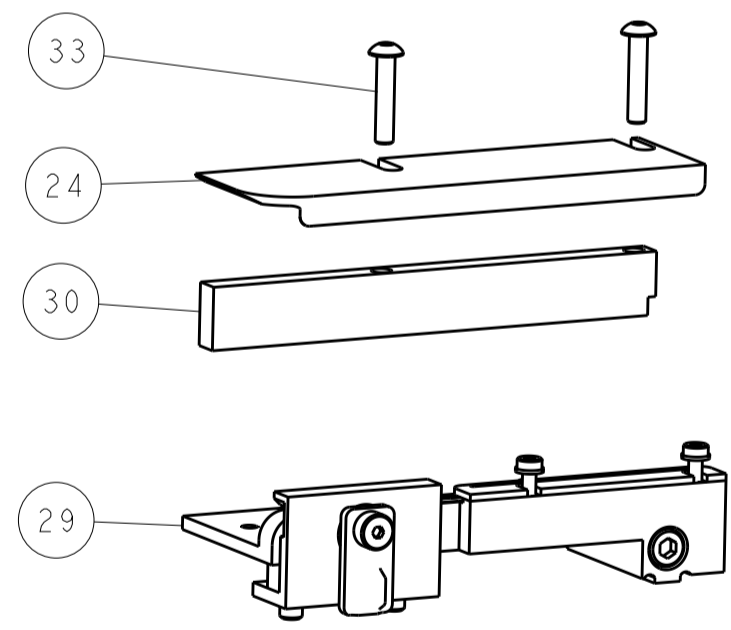
CAM POSITIONS



SHEAR DEPRESSOR DETAIL



TERMINAL SUPPORT LOCATION



FEED TRACK POSITION GUIDE BY INSULATION BARREL

PACIFIC VERSION
 Shown on sheets 3 of 4 & 4 of 4
 (Atlantic version shown on sheets 1 of 4 & 2 of 4)

DIMENSIONS:		TOLERANCES UNLESS OTHERWISE SPECIFIED:		DWN: J.HOU 2JULY2014		TE Connectivity	
mm	0 PLC ±0.5	1 PLC ±0.5	2 PLC ±0.13	3 PLC ±0.13	4 PLC ±0.001	5 PLC ±0.001	Harrisburg, PA 17105-3608
MATERIAL:		FINISH:		APVD: H.GUO 2JULY2014		NAME: Ocean Side Feed Applicator	
				PRODUCT SPEC:		SIZE: CAGE CODE: DRAWING NO:	
				APPLICATION SPEC:		RESTRICTED TO:	
				WEIGHT:		A 00779 C=2266395	
				Customer Accessible Production Drawing		SCALE: 1:2 SHEET 4 OF 4 REV A	