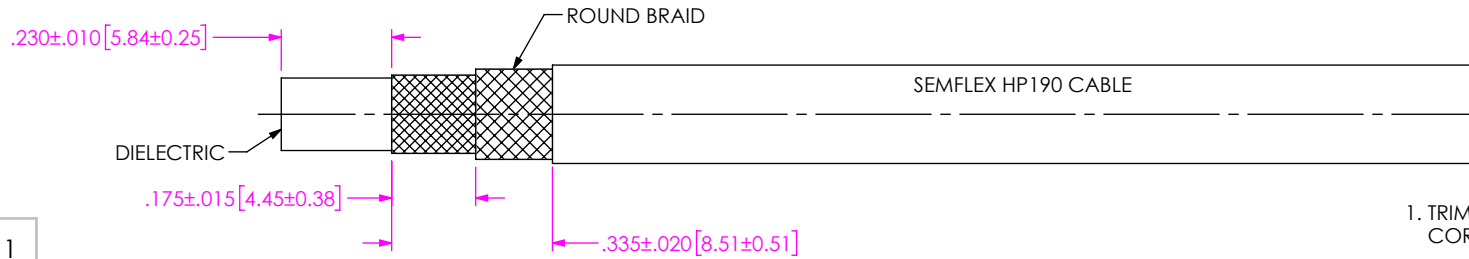
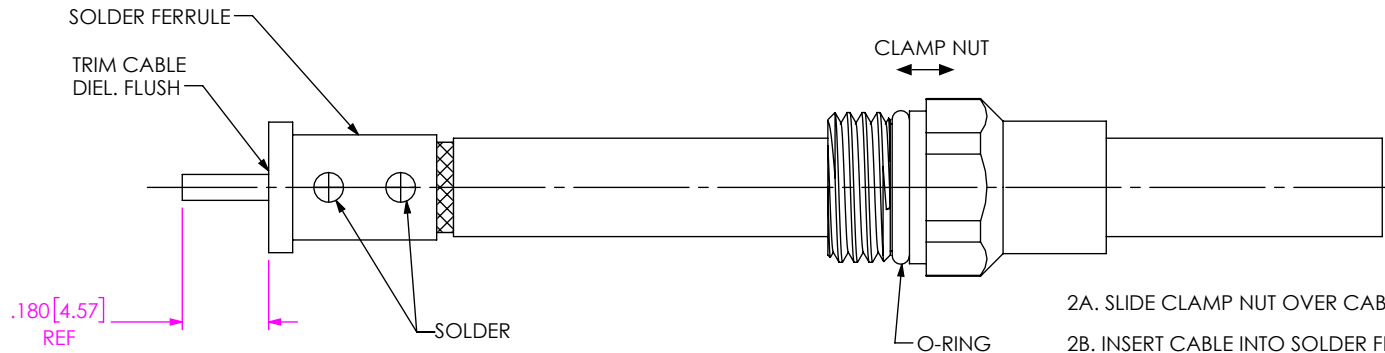


CABLE APPLICATION VIEWS



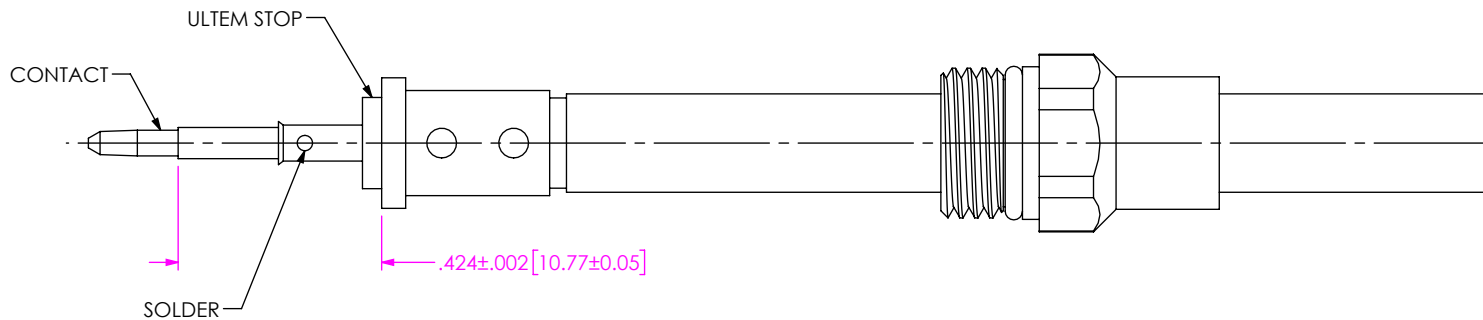
1. TRIM CABLE TO EXPOSE DIELECTRIC CORE AND BRAID AS SHOWN.

IN-PROCESS VIEW 1



2A. SLIDE CLAMP NUT OVER CABLE AS SHOWN.
 2B. INSERT CABLE INTO SOLDER FERRULE UNTIL FWD. BRAID SEATS THEN SOLDER BOTH CABLE BRAIDS WHERE SHOWN.
 2C. TRIM CABLE DIELECTRIC FLUSH TO SOLDER FERRULE.

IN-PROCESS VIEW 2



3A. SLIDE ULTEM DIELECTRIC STOP OVER CABLE CENTER CONDUCTOR AGAINST SOLDER FERRULE AS SHOWN.
 3B. SOLDER CONTACT FLUSH AGAINST STOP TO DIMENSION SHOWN.

IN-PROCESS VIEW 3

PROPRIETARY NOTE
 THIS DOCUMENT CONTAINS CONFIDENTIAL AND PROPRIETARY INFORMATION AND ALL DESIGN, MANUFACTURING, REPRODUCTION, USE, PATENT RIGHTS AND SALES RIGHTS ARE EXPRESSLY RESERVED BY SAMTEC, INC. THIS DOCUMENT SHALL NOT BE DISCLOSED, IN WHOLE OR PART, TO ANY UNAUTHORIZED PERSON OR ENTITY NOR REPRODUCED, TRANSFERRED OR INCORPORATED IN ANY OTHER PROJECT IN ANY MANNER WITHOUT THE EXPRESS WRITTEN CONSENT OF SAMTEC, INC.



520 PARK EAST BLVD, NEW ALBANY, IN 47150
 PHONE: 812-944-6733 FAX: 812-948-5047
 e-Mail: info@SAMTEC.com code 55322

DO NOT SCALE DRAWING

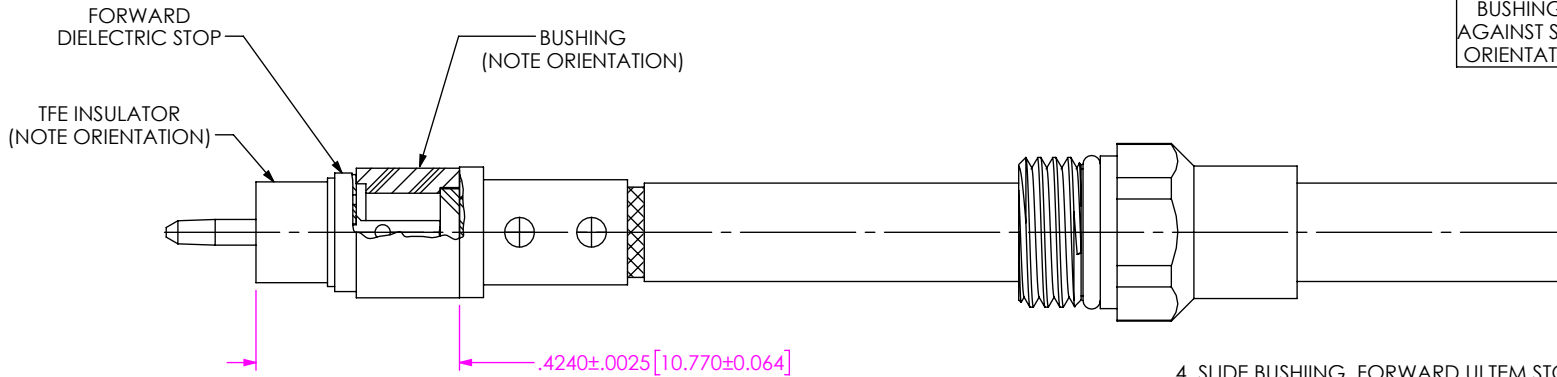
SHEET SCALE: 2.5:1

DESCRIPTION: TNCA PLUG, SOLDER CLAMP FOR SEMIFLEX HP190 CABLE

DWG. NO. PRF04-P-C-EP-190-SS

BY: CHRISTIAN S05/07/2019 SHEET 2 OF 3

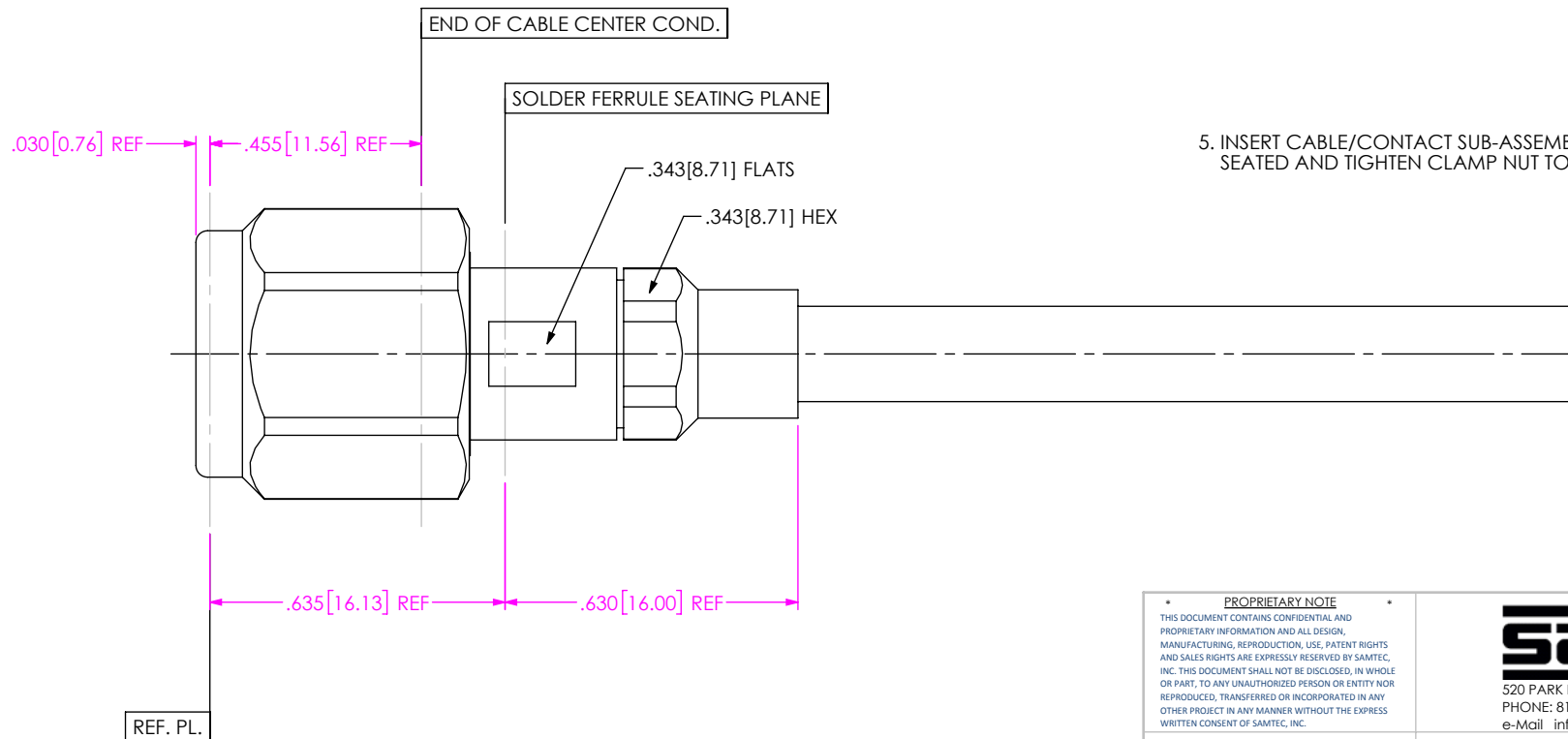
CABLE APPLICATION VIEWS



*****NOTE*****
 BUSHING WILL NOT SEAT
 AGAINST SOLDER FERRULE IF
 ORIENTATION IS REVERSED.

4. SLIDE BUSHING, FORWARD ULTEM STOP & FORWARD TEFLON INSULATOR OVER CONTACT AS SHOWN. (NOTE: ORIENT BUSHING WITH DEEPER SMALLER DIAMETER C'BORE TOWARD SOLDER FERRULE. ORIENT FORWARD TFE INSULATOR WITH SHOULDER TOWARD DIELECTRIC STOP).

IN-PROCESS VIEW 4



5. INSERT CABLE/CONTACT SUB-ASSEMBLY INTO CONNECTOR UNTIL SEATED AND TIGHTEN CLAMP NUT TO 35-45 IN/LBS

IN-PROCESS VIEW 5

PROPRIETARY NOTE
 THIS DOCUMENT CONTAINS CONFIDENTIAL AND PROPRIETARY INFORMATION AND ALL DESIGN, MANUFACTURING, REPRODUCTION, USE, PATENT RIGHTS AND SALES RIGHTS ARE EXPRESSLY RESERVED BY SAMTEC, INC. THIS DOCUMENT SHALL NOT BE DISCLOSED, IN WHOLE OR PART, TO ANY UNAUTHORIZED PERSON OR ENTITY NOR REPRODUCED, TRANSFERRED OR INCORPORATED IN ANY OTHER PROJECT IN ANY MANNER WITHOUT THE EXPRESS WRITTEN CONSENT OF SAMTEC, INC.

samtec
 520 PARK EAST BLVD, NEW ALBANY, IN 47150
 PHONE: 812-944-6733 FAX: 812-948-5047
 e-Mail info@SAMTEC.com code 55322

DO NOT SCALE DRAWING
 SHEET SCALE: 2.5:1

DESCRIPTION: TNCA PLUG, SOLDER CLAMP FOR SEMFLEX HP190 CABLE
 DWG. NO. PRF04-P-C-EP-190-SS
 BY: CHRISTIAN S. 05/07/2019 SHEET 3 OF 3