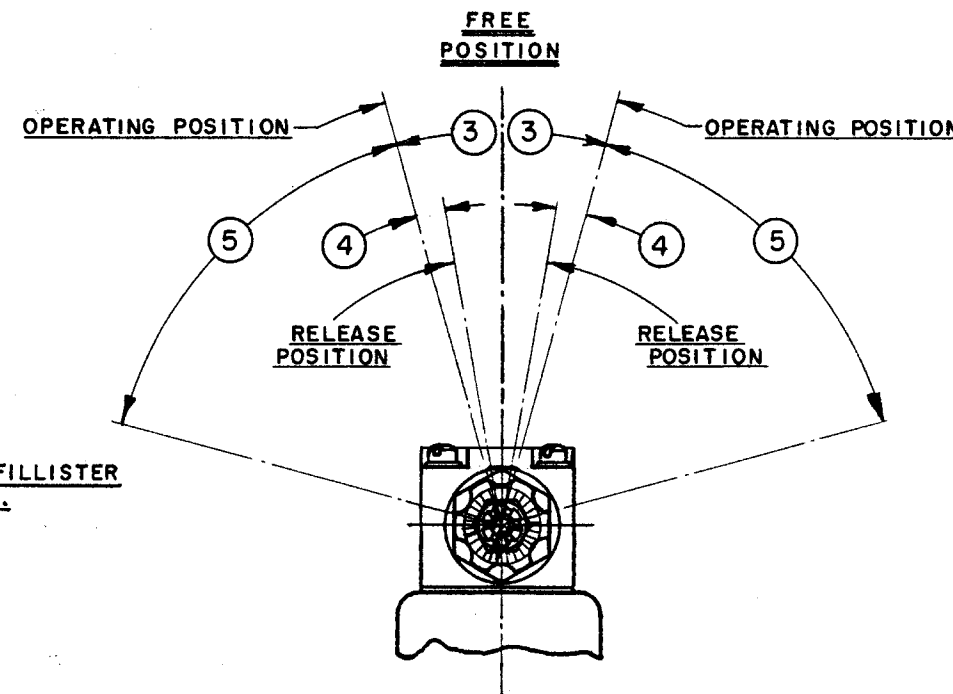
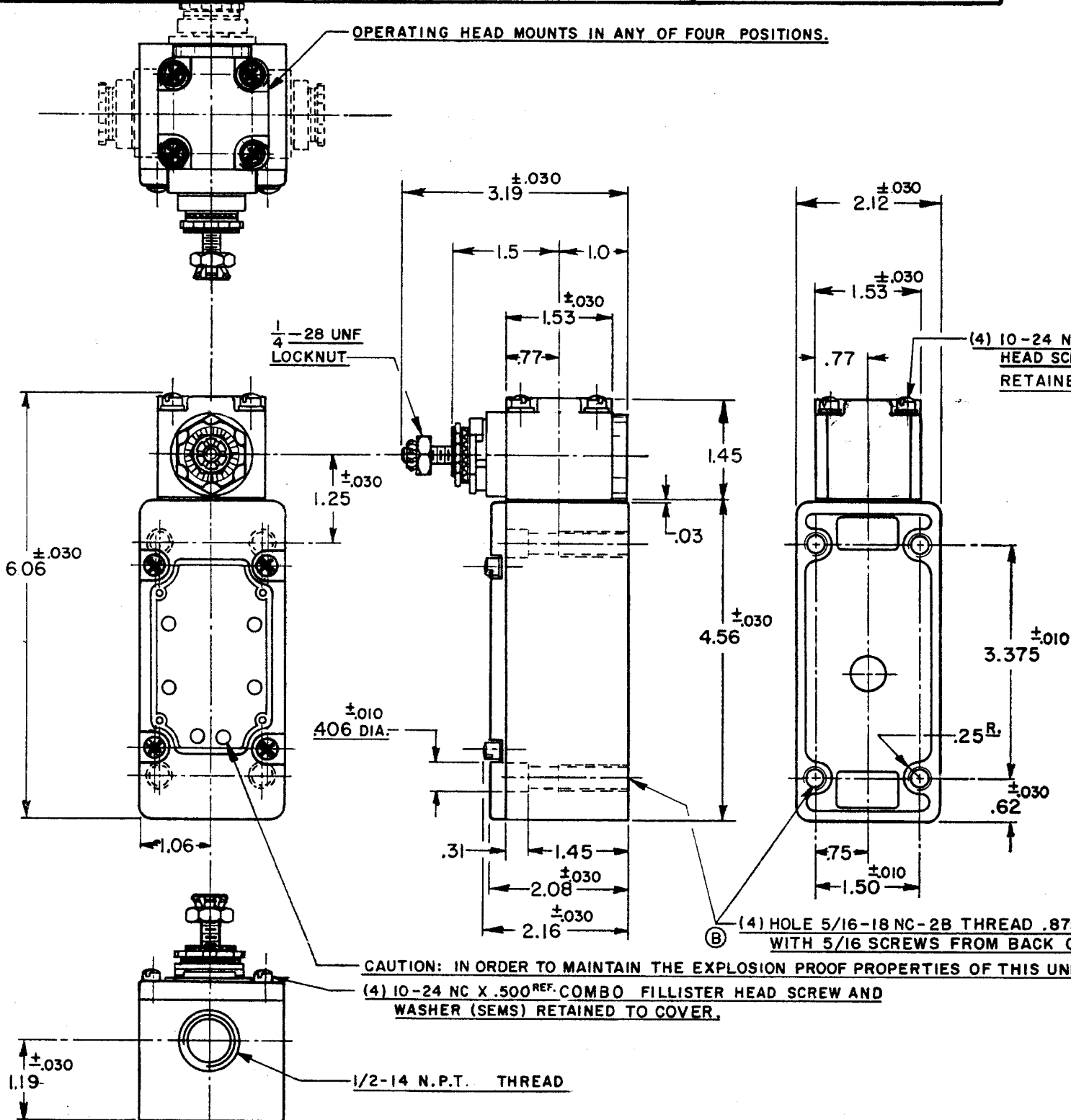


**MICRO SWITCH**  
A DIVISION OF MINNEAPOLIS HONEYWELL REGULATORY COMPANY  
FREEPORT, ILLINOIS

**SWITCH—ENCLOSED**

CATALOG LISTING  
**51ML2-E1**

THIS DRAWING COVERS A PROPRIETARY ITEM AND IS THE PROPERTY OF MICRO SWITCH, A DIVISION OF HONEYWELL. THIS DRAWING IS NOT TO BE COPIED OR USED WITHOUT THE APPROVAL OF MICRO SWITCH.



- NOTES
- 1 - IT IS ESSENTIAL THAT THE CONDUIT OPENING BE PROPERLY SEALED IN ORDER TO MAINTAIN THE EXPLOSION PROOF PROPERTIES SWITCH IS ASSEMBLED FOR ACTUATION IN EITHER DIRECTION
  - 2 - LISTED BY UNDERWRITERS LABORATORY, INC. FOR USE IN CLASS I, GROUPS C AND D VAPOR-AIR ATMOSPHERE, AND CLASS 2 GROUPS E, F AND G DUST-AIR ATMOSPHERES
  - 3 - TO CONVERT SWITCH FOR ACTUATION IN EITHER CLOCKWISE OR COUNTER-CLOCKWISE DIRECTION ONLY, REMOVE THE HEAD AND SLIDE THE CAM TOWARD THE REAR OF THE HEAD SUFFICIENTLY TO DISENGAGE FROM THE FLATS ON THE SHAFT. ROTATE THE CAM 90° IN THE OPPOSITE DIRECTION OF THE ACTUATION DESIRED AND RE-ENGAGE THE CAM WITH THE FLATS ON THE SHAFT
  - 4 - SHAFT MAY BE ADJUSTED TO ACTUATE THE SWITCH IN THE CLOCKWISE DIRECTION ONLY, THE COUNTER-CLOCKWISE DIRECTION OR IN BOTH DIRECTIONS

REPLACES 51ML2-E1

DRAWING NUMBER M

ISSUE II

REVISIONS

A	CO10928	R.E.R.	8 NOV. 56
B	CO11247	O.M.W.	6 MAR 58
C	CO12789	M.B.F.	14 MAY 58
D	CO13487	M.B.F.	10 MAR 59
E	CO24575	M.B.F.	10 SEP 68
F	CO52194	G.J.W.	22 SEP 83
G	CO58367	J.A.S.	11 NOV 85
H	CO55051-C	F.A.D.	6 JAN 86
J	CO63739		
D	CO15 JUN 88		
K	CO74287		
G.J.W.	15 APR 93		

74-36.3

H.A.P. 12 DEC. 55

74-36.3

CHARACTERISTICS	ELECTRICAL DATA	SCALE 1/2 TO 1
OPERATING TORQUE—3 9/16 LB.-IN. MAX.	CONTACT ARRANGEMENT	DO NOT SCALE PRINT
FULL OVERTRAVEL TORQUE—5 3/8 LB.-IN. MAX.	S. P. D. T.	UNLESS OTHERWISE SPECIFIED
RELEASE TORQUE—7/16 LB.-IN. MIN.		DIMENSIONS ARE IN INCHES
PRETRAVEL—3 12° MAX.	20 A-120, 240 OR 480 VAC; 3/4 H.P.-120 VAC	<b>TOLERANCES ARE:</b>
DIFFERENTIAL TRAVEL—4 4° MAX.	1 1/2 HP-240 VAC; 1/2 A-115 VDC; 1/4 A-230 VDC	ONE PLACE (.0) ±.030
OVERTRAVEL—5 60° MIN.	PILOT DUTY 720VA—HEAVY DUTY 600 VAC MAX	TWO PLACE (.00) ±.018
		THREE PLACE (.000) ±.008
		ANGLES ±
SWITCH—BASIC REPLACEMENT—IMK1		WEIGHT