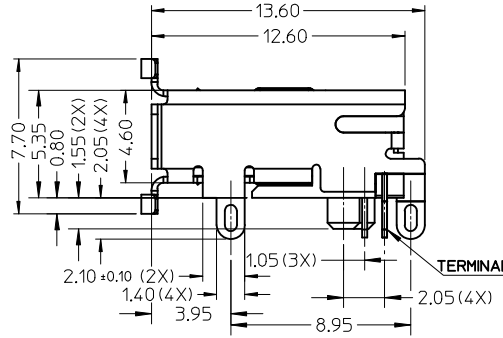
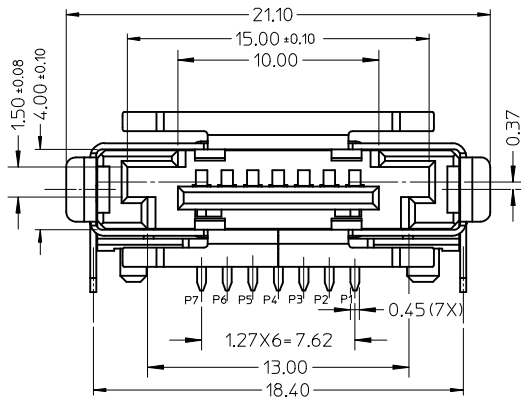
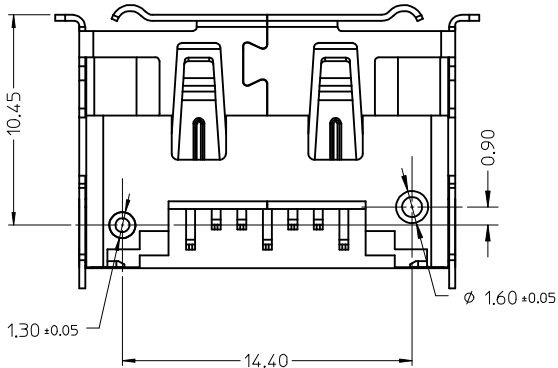


RECOMMEND PCB LAYOUT(CONNECTOR SIDE)
THICKNESS=1.30(ALL TOLERANCE: +/-0.05)



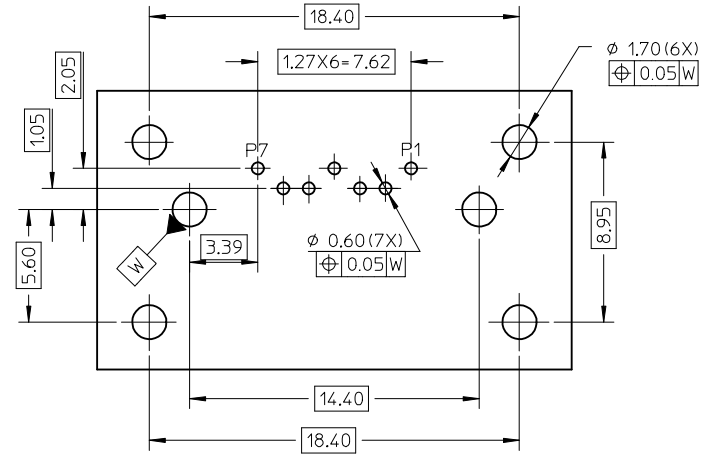
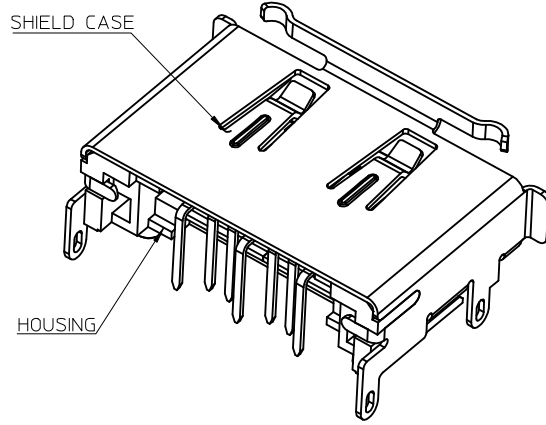
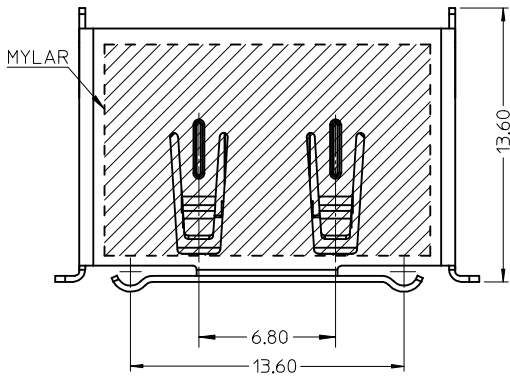
NOTES:

- MATERIAL:
HOUSING: THERMAL PLASTIC,COLOR: BLACK, UL94V-0.
SHIELD CASE: COPPER ALLOY.
TERMIANL: COPPER ALLOY.
- PLATING:
SHIELD CASE: 100~200μ" SOLDERABLE NICKEL OVER ALL.
TERMINAL: CONTACT AREA GOLD PLATING(SEE CHART) AND SOLDER TAIL 50~100μ" TIN ALLOY PLATING OVER 50μ" MIN. NICKEL.
- PRODUCT SPEC REFER TO PS-47082-001.
- PACKAGE SPEC REFER TO PK-47379-001.
- PRODUCT MEET STANDARD 1.0 REVISION OF THE SERIAL ATA II: CABLE AND CONNECTOR VOL 2 SPECIFICATION.
- PRODUCT COMPLIANT TO RoHS DIRECTIVE 2002/95/EC AND ELV 2000/53/EC.

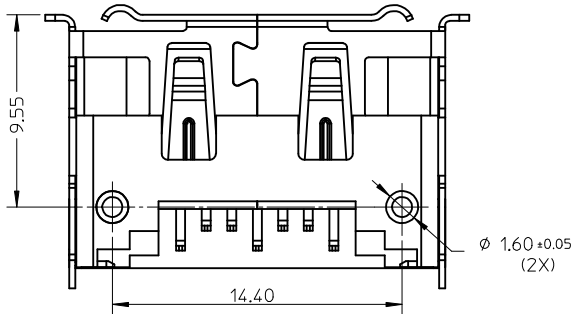
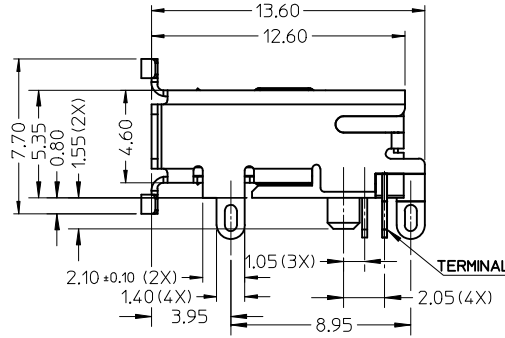
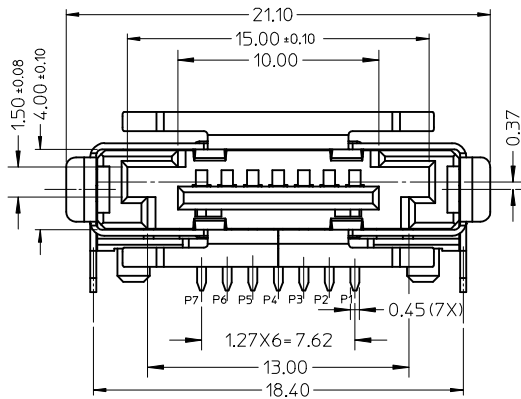


REVISED	EC NO:	2007/04/30	QUALITY SYMBOLS	GENERAL TOLERANCES (UNLESS SPECIFIED)	DIMENSION STYLE	SCALE	DESIGN UNITS	THIRD ANGLE PROJECTION			
	DRWG:GLL1	2007/05/04							MM ONLY	1:1	METRIC
	CHKD:	2007/05/04							DRAWN BY	DATE	TITLE
	APPR:JINCHEN	2007/05/09							DIXON LI	2006/11/17	EXTERNAL SATA PLUG WITH SHELL DIP MOUNT TYPE
			DESCRIPTION	4 PLACES ± --- ± ---	CHECKED BY	DATE					
				3 PLACES ± --- ± ---	JENNY ZENG	2006/11/17					
				2 PLACES ± 0.2 ± ---	APPROVED BY	DATE					
				1 PLACE ± 0.25 ± ---	GRATE MA	2006/11/17					
				ANGULAR ± 3 °	MATERIAL NO.						
				DRAFT WHERE APPLICABLE MUST REMAIN WITHIN DIMENSIONS	SEE TABLE IN SHEET 3						
					SIZE	THIS DRAWING CONTAINS INFORMATION THAT IS PROPRIETARY TO MOLEX INCORPORATED AND SHOULD NOT BE USED WITHOUT WRITTEN PERMISSION					
					A3						
						MOLEX MOLEX INCORPORATED		SHEET NO. 1 OF 3			
						DOCUMENT NO. SD-47392-100					

10 9 8 7 6 5 4 3 2 1



RECOMMEND PCB LAYOUT (CONNECTOR SIDE)
THICKNESS=1.30 (ALL TOLERANCE: +/-0.05)



REVISED	EC NO:	2007/04/30	QUALITY SYMBOLS	GENERAL TOLERANCES (UNLESS SPECIFIED)		DIMENSION STYLE		SCALE	DESIGN UNITS	THIRD ANGLE PROJECTION
	DRWG:GLL1	2007/05/04		mm	INCH	1:1	METRIC			
	CHKD:	2007/05/04		4 PLACES	± ---	± ---	DRAWN BY	DATE	TITLE	
	APPR: JINCHEN	2007/05/09		3 PLACES	± ---	± ---	DIXON LI	2006/11/17	EXTERNAL SATA PLUG WITH SHELL DIP MOUNT TYPE	
			2 PLACES	± 0.2	± ---	CHECKED BY	DATE			
			1 PLACE	± 0.25	± ---	JENNY ZENG	2006/11/17			
			ANGULAR ± 3 °			APPROVED BY	DATE			
			DRAFT WHERE APPLICABLE MUST REMAIN WITHIN DIMENSIONS			GRATE MA	2006/11/17			
						MATERIAL NO.				
						SEE TABLE IN SHEET 3				
						THIS DRAWING CONTAINS INFORMATION THAT IS PROPRIETARY TO MOLEX INCORPORATED AND SHOULD NOT BE USED WITHOUT WRITTEN PERMISSION				

	10	9	8	7	6	5	4	3	2	1	
F	473920205	ORANGE	0.76 MICRONS MIN	PA46(ONLY USE FOR WAVE SOLDER)	TWO POSTS ARE STAGGER AND DIAMETERS ARE DIFERRENT (DETAILS REFER TO SHEET 1)		473921205	ORANGE	0.76 MICRONS MIN	PA46(ONLY USE FOR WAVE SOLDER)	
	473920204	RED					473921204	RED			
	473920203	BLUE					473921203	BLUE			
	473920202	NATURE					473921202	NATURE			
	473920201	BLACK					473921201	BLACK			
E	473920105	ORANGE	0.38 MICRONS MIN	PA46(ONLY USE FOR WAVE SOLDER)			473921105	ORANGE	0.38 MICRONS MIN	PA46(ONLY USE FOR WAVE SOLDER)	
	473920104	RED					473921104	RED			
	473920103	BLUE					473921103	BLUE			
	473920102	NATURE					473921102	NATURE			
	473920101	BLACK					473921101	BLACK			
D	473920005	ORANGE	GOLD FLASH	PA6T(USE FOR IR AND WAVE SOLDER)			473921005	ORANGE	GOLD FLASH	PA6T(USE FOR IR AND WAVE SOLDER)	
	473920004	RED					473921004	RED			
	473920003	BLUE					473921003	BLUE			
	473920002	NATURE					473921002	NATURE			
	473920001	BLACK					473921001	BLACK			
C	473920305	ORANGE	0.76 MICRONS MIN	PA6T(USE FOR IR AND WAVE SOLDER)			473921305	ORANGE	0.76 MICRONS MIN	PA6T(USE FOR IR AND WAVE SOLDER)	
	473920304	RED					473921304	RED			
	473920303	BLUE					473921303	BLUE			
	473920302	NATURE					473921302	NATURE			
	473920301	BLACK					473921301	BLACK			
B	473920405	ORANGE	0.38 MICRONS MIN	PA6T(USE FOR IR AND WAVE SOLDER)			473921405	ORANGE	0.38 MICRONS MIN	PA6T(USE FOR IR AND WAVE SOLDER)	
	473920404	RED					473921404	RED			
	473920403	BLUE					473921403	BLUE			
	473920402	NATURE					473921402	NATURE			
	473920401	BLACK					473921401	BLACK			
A	473920505	ORANGE	GOLD FLASH	PA6T(USE FOR IR AND WAVE SOLDER)			473921505	ORANGE	GOLD FLASH	PA6T(USE FOR IR AND WAVE SOLDER)	
	473920504	RED					473921504	RED			
	473920503	BLUE					473921503	BLUE			
	473920502	NATURE					473921502	NATURE			
	473920501	BLACK					473921501	BLACK			
MATERIAL MUBER	HOUSING COLOR	TERMINAL CONTACT PLATING	HOUSING MATERIAL	REMARK			MATERIAL NUMBER	HOUSING COLOR	TERMINAL CONTACT PLATING	HOUSING MATERIAL	REMARK

REVISED	EC NO: SH2007-0788	2007/04/30	QUALITY SYMBOLS	GENERAL TOLERANCES (UNLESS SPECIFIED)		DIMENSION STYLE		SCALE	DESIGN UNITS	THIRD ANGLE PROJECTION		
	DRWNGLLI	2007/05/04		mm	INCH	MM ONLY			METRIC			
	CHKD: ITIAN	2007/05/04		4 PLACES	± ---	± ---	DRAWN BY	DATE	TITLE			
	APPR: JNCHEN	2007/05/09		3 PLACES	± ---	± ---	DIXON LI	2006/11/17	EXTERNAL SATA PLUG WITH SHELL DIP MOUNT TYPE			
	REV			2 PLACES	± 0.2	± ---	CHECKED BY	DATE	MOLEX INCORPORATED			
		1 PLACE	± 0.25	± ---	JENNY ZENG	2006/11/17						
		ANGULAR ± 3 °		APPROVED BY		DATE						
				GRATE MA		2006/11/17						
				MATERIAL NO.		DOCUMENT NO.				SHEET NO.		
				DRAFT WHERE APPLICABLE MUST REMAIN WITHIN DIMENSIONS		SEE TABLE		SD-47392-100		3 OF 3		
						THIS DRAWING CONTAINS INFORMATION THAT IS PROPRIETARY TO MOLEX INCORPORATED AND SHOULD NOT BE USED WITHOUT WRITTEN PERMISSION						