

NOTES: UNLESS OTHERWISE SPECIFIED.

1. MATERIAL & FINISH:

- 1.1 BODY & INSERT
 - 1.1.1 145-0701-001: GOLD PLATED STAINLESS STEEL
 - 1.1.2 145-0701-002: PASSIVATED STAINLESS STEEL
- 1.2 SUPPORT BEAD: PPE (NORYL)
- 1.3 CENTER CONTACT: GOLD PLATED BERYLLIUM COPPER

2. ELECTRICAL:

- 2.1 IMPEDANCE: 50 OHMS
- 2.2 FREQUENCY RANGE: 0 - 40.0 GHz
- 2.3 VSWR: DEPENDANT UPON APPLICATION, TYPICALLY 1.22 MAX
- 2.4 WORKING VOLTAGE: 335 VRMS MAX AT SEA LEVEL
- 2.5 DIELECTRIC WITHSTANDING VOLTAGE: 1000 VRMS MIN AT SEA LEVEL
- 2.6 INSULATION RESISTANCE: 5000 MEGOHM MIN
- 2.7 CONTACT RESISTANCE:
 - CENTER CONTACT - INITIAL 6.0 MILLIOHM MAX, AFTER ENVIRONMENTAL 8.0 MILLIOHM MAX
 - OUTER CONDUCTOR - INITIAL 2.0 MILLIOHM MAX AFTER ENVIRONMENTAL NOT APPLICABLE
- 2.8 CORONA LEVEL: 250 VOLTS MIN AT 70,000 FEET
- 2.9 INSERTION LOSS: DEPENDANT UPON APPLICATION, TYPICALLY $< .06\sqrt{F}$ (F IN GHz)
- 2.10 RF LEAKAGE: -90 dB MIN AT 2.5 GHz
- 2.11 RF HIGH POTENTIAL WITHSTANDING VOLTAGE: 670 VRMS AT 4 AND 7 MHz

3. MECHANICAL:

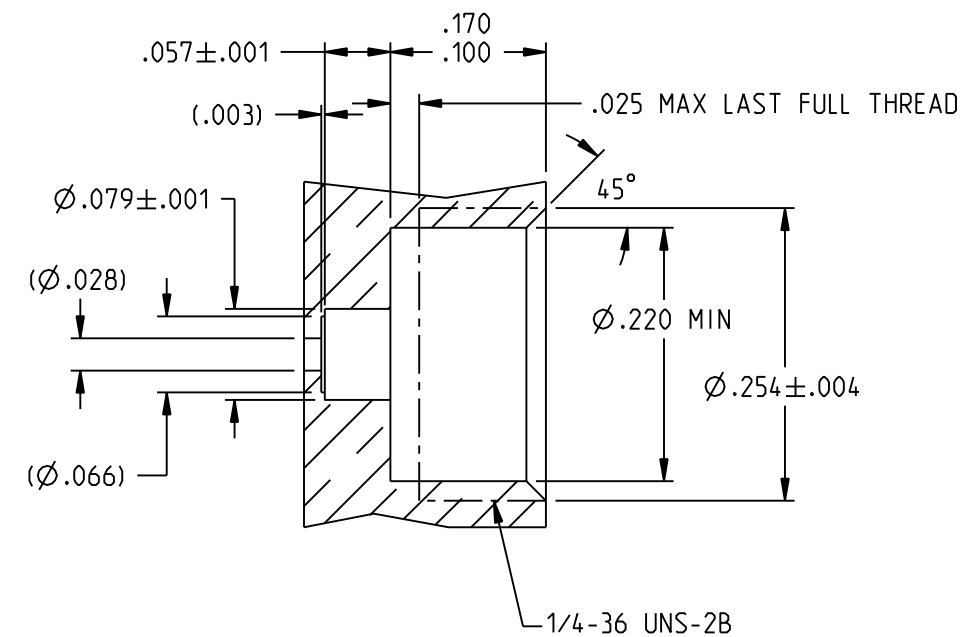
- 3.1 ENGAGE/DISENGAGE TORQUE: 2 INCH-POUNDS MAX
- 3.2 MATING TORQUE: 7-10 INCH POUNDS
- 3.3 CONTACT RETENTION: 6 LBS MIN AXIAL FORCE
- 3.4 DURABILITY: 500 CYCLES MIN

4. ENVIRONMENTAL:

- 4.1 (MEETS OR EXCEEDS THE APPLICABLE PARAGRAPH OF MIL-PRF-39012)
- 4.2 THERMAL SHOCK: MIL-STD-202, METHOD 107, CONDITION B
- 4.3 OPERATING TEMPERATURE: -65°C TO 125°C
- 4.4 CORROSION: MIL-STD-202, METHOD 101, CONDITION B
- 4.5 SHOCK: MIL-STD-202, METHOD 213, CONDITION I
- 4.6 VIBRATION: MIL-STD-202, METHOD 204, CONDITION D
- 4.7 MOISTURE RESISTANCE: MIL-STD-202, METHOD 106

SOCKET SHALL ACCEPT
 $\varnothing .0120 \pm .0005$ PIN
 $\nabla .080$ MAX

SMK INTERFACE
 PER MIL-STD-348



MOUNTING HOLE

REF DIMENSIONS PENDING CUSTOMER APPLICATION
 RECOMMENDED SEAL PIN: JOHNSON 142-1000-033

	3RD ANGLE PROJECTION	JOHNSON	
	<small>This PROPRIETARY Document is property of Cinch Connectivity Solutions. It is confidential in nature, non-transferable, and issued with the clear understanding that it is not to be traced or copied without permission and is returnable upon demand.</small>	RoHS2 2011/65/EU	Title: SMK (2.92mm) JACK ASSY THREAD MOUNT, FIELD REPLACEABLE, .012 SEAL PIN
<small>INTERPRET DRAWING IN ACCORDANCE WITH ASME Y14.5-2009.</small>	UNLESS OTHERWISE SPECIFIED .XX ±.02 .XXX ±.005 ANGLES ±2°	Model No. 145-0701-001/010	Date 1/16/2020
Size B	DO NOT SCALE DRAWING	Sheet 1 OF 1	