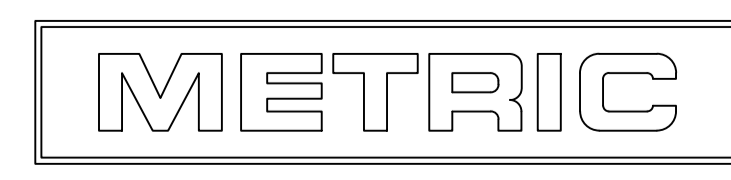
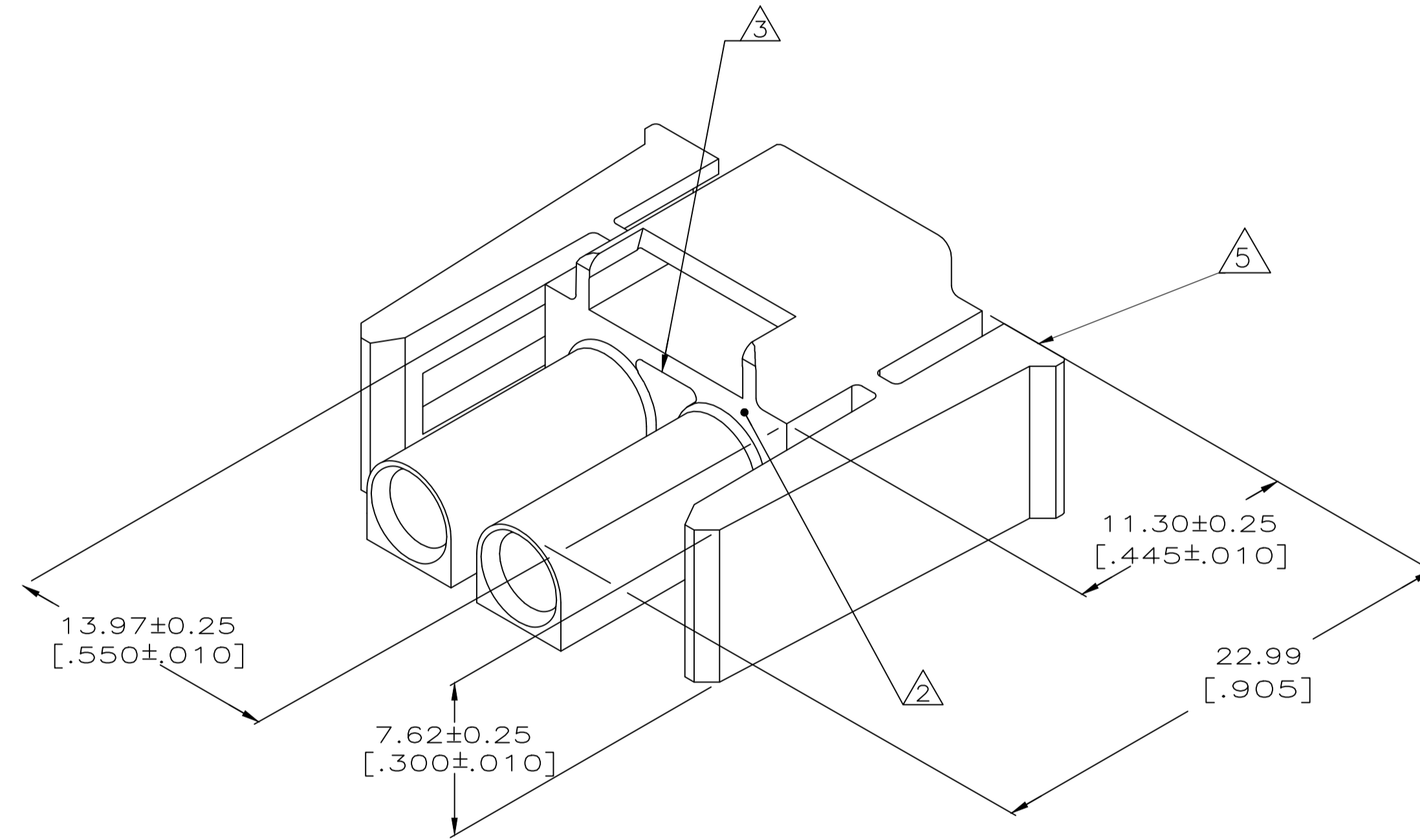


REVISIONS					
P	LTR	DESCRIPTION	DATE	OWN	APVD
E2		REV. ECO 17-011267	13SEP2017	HC	KR

- MUST BE ASSEMBLED WITH PLUG REAR P/N 770032-1 BEFORE MATING. KIT P/N IS 770017-1.
- AMP LOGO LOCATED THIS SURFACE.
- NEW MOLD CONSTRUCTION PROVIDES MATERIAL REDUCTION CORING AT BASE OF SILOS WITH NO CORING AS OPTIONAL.
- DIMENSIONS SHOWN REPRESENT PRODUCT IN DRY, AS MOLDED CONDITION. ADDITIONAL 2% GROWTH DUE TO SUBSEQUENT MOISTURE ABSORPTION MAY OCCUR AND SHOULD BE ACCOUNTED FOR
- CSA CERTIFICATION LOGO LOCATED APPROXIMATELY AS SHOWN



770031-1
PART NUMBER

THIS DRAWING IS A CONTROLLED DOCUMENT.		DWN K. SALMON 1-15-92	770031-1	
DIMENSIONS:		CHK R. SWING 1-15-92	APVD	
INCHES		APVD	NAME	
TOLERANCES UNLESS OTHERWISE SPECIFIED:		PRODUCT SPEC	PLUG FRONT, 2 CIRCUIT, UNIVERSAL MATE-N-LOK	
0 PLC ± -		APPLICATION SPEC	-	
1 PLC ± -		WEIGHT	0	
2 PLC ± -		SIZE	A1	
3 PLC ± 0.13 [.005]		CAGE CODE	00779	
4 PLC ± -		DRAWING NO	C=770031	
ANGLES ± -		RESTRICTED TO	-	
MATERIAL NYLON,UL94V-0,		CUSTOMER DRAWING		
FINISH		SCALE	5:1	
		SHEET	1 OF 1	
		REV	E2	