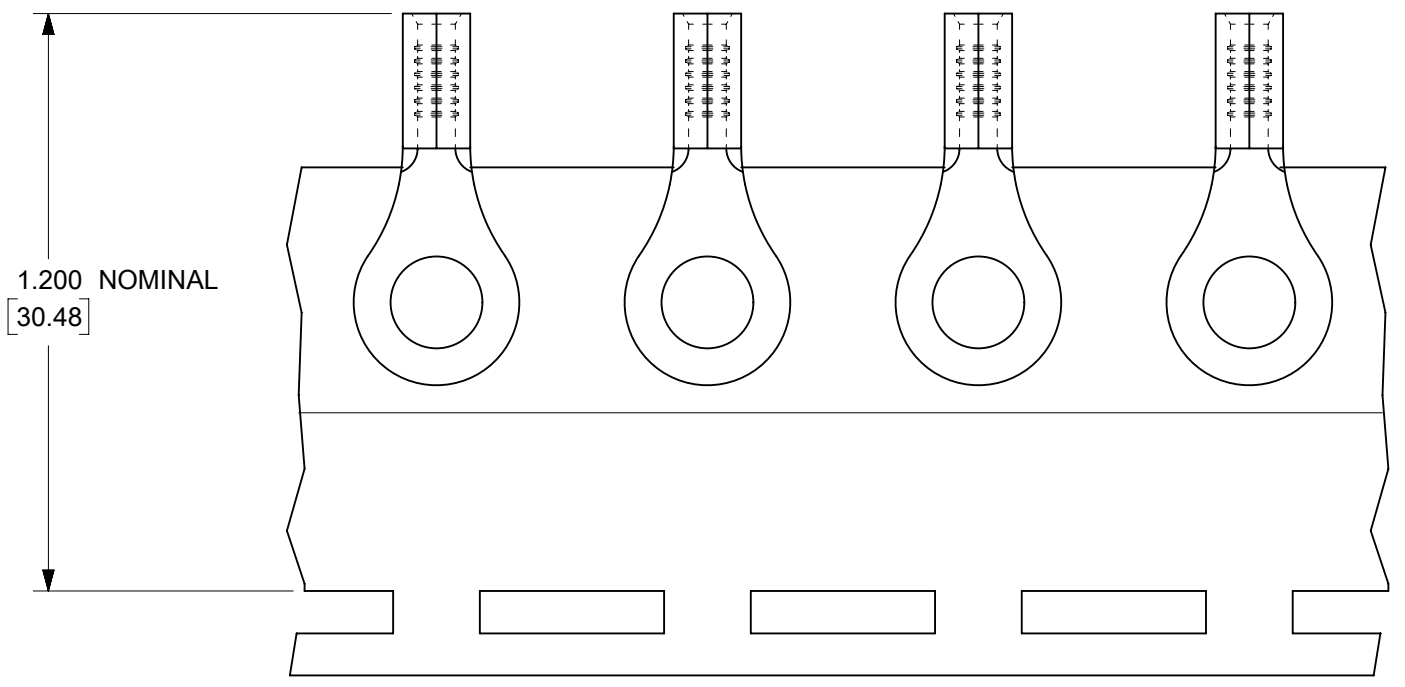
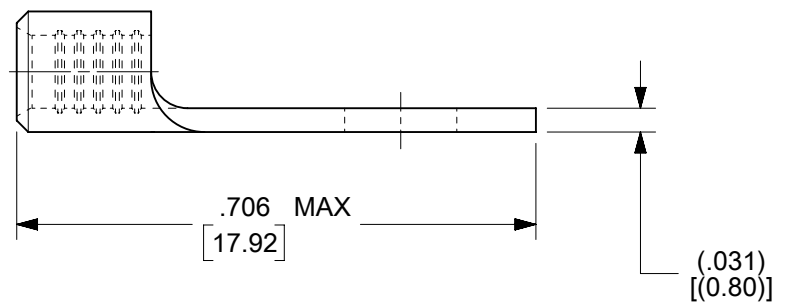
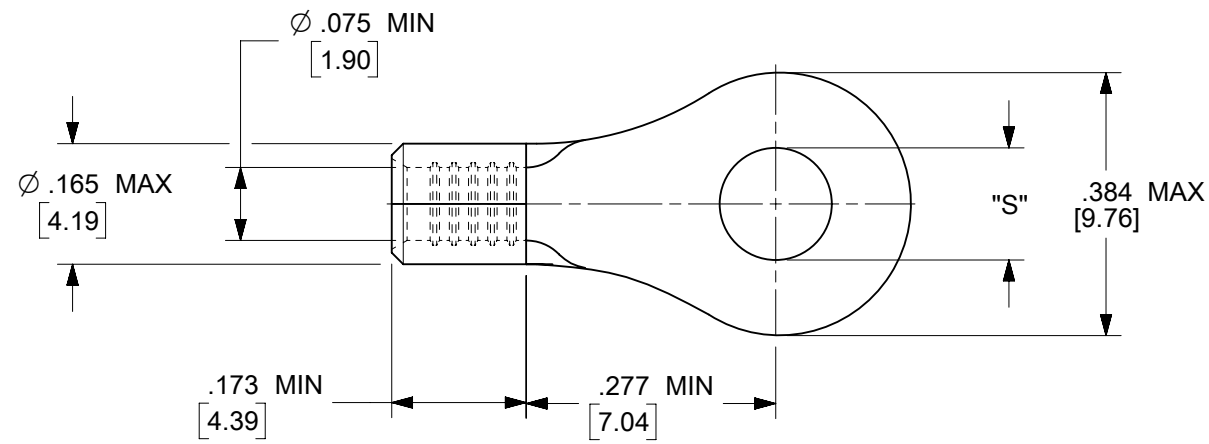


MATERIAL NO.	ENG. NO.	STUD SIZE	"S" MAX	DESCRIPTION
192030388	19203-0388	10	.212/5.38	LOOSE
192030052	B-S-137-10T	10	.212/5.38	TAPE

(E1)



PARTS ON TAPE

- NOTES:
1. MATERIAL: STEEL
  2. WIRE SIZE: 16-14 AWG (1.5-2.5 MM<sup>2</sup>)
  3. FINISH: NICKEL PLATED WITH OPTIONAL COPPER FLASH UNDERPLATING, IS ALLOWED FOR IMPROVED ADHESION.
  4. PART IS ROHS COMPLIANT.
  5. AMBIENT OPERATING TEMPERATURE UP TO 900 °F (483 °C).

(E1)

THIS DRAWING CONTAINS INFORMATION THAT IS PROPRIETARY TO MOLEX ELECTRONIC TECHNOLOGIES, LLC AND SHOULD NOT BE USED WITHOUT WRITTEN PERMISSION											
FUNCTIONAL SYMBOLS	FA = 0	IN/MM	SCALE	4:1	CURRENT REV DESC: REMASTERED IN ECTR AND UPDATED NOTE						
	FC = 0	GENERAL TOLERANCES (UNLESS SPECIFIED)			EC NO: 708789						
DIVISIONAL SYMBOLS	FD = 0	4 PLACES	±	MM	±	INCH	±	DRWN: PAWANC	2022/05/10	RING TONGUE TERMINAL, 16-14 AWG, KRIMPTITE, 900 DEG F (483 DEG C)	
		3 PLACES	±		±		±	CHKD: DMYRICK	2022/06/01		
		2 PLACES	±		±		±	APPR: JMACNEIL	2022/06/02		
		1 PLACE	±		±		±	INITIAL REVISION:			
		0 PLACES	±		±		±	DRWN: DMYRICK	2005/04/06		
		ANGULAR TOL	±	°			APPR: RDEROSS	2005/04/06			
DRAFT WHERE APPLICABLE MUST REMAIN WITHIN DIMENSIONS		THIRD ANGLE PROJECTION		DRAWING		SERIES		MATERIAL NUMBER		CUSTOMER	
				B-SIZE		19203		SEE CHART		GENERAL MARKET	
DOCUMENT STATUS		P1	RELEASE DATE		2022/06/02	15:20:35		DOCUMENT NUMBER		REVISION	
					SD-19203-017	PSD 001		E1		SHEET NUMBER	
						1 OF 1					