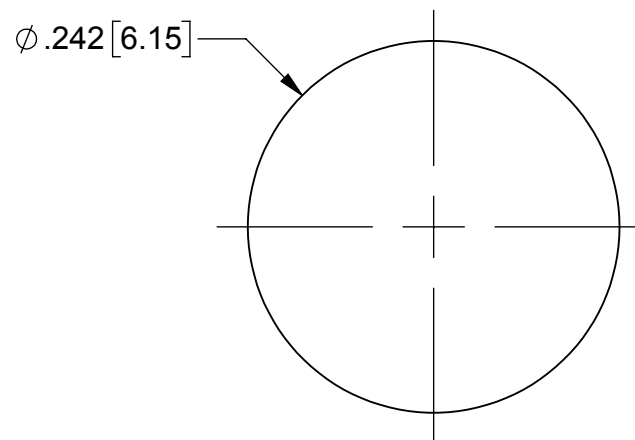
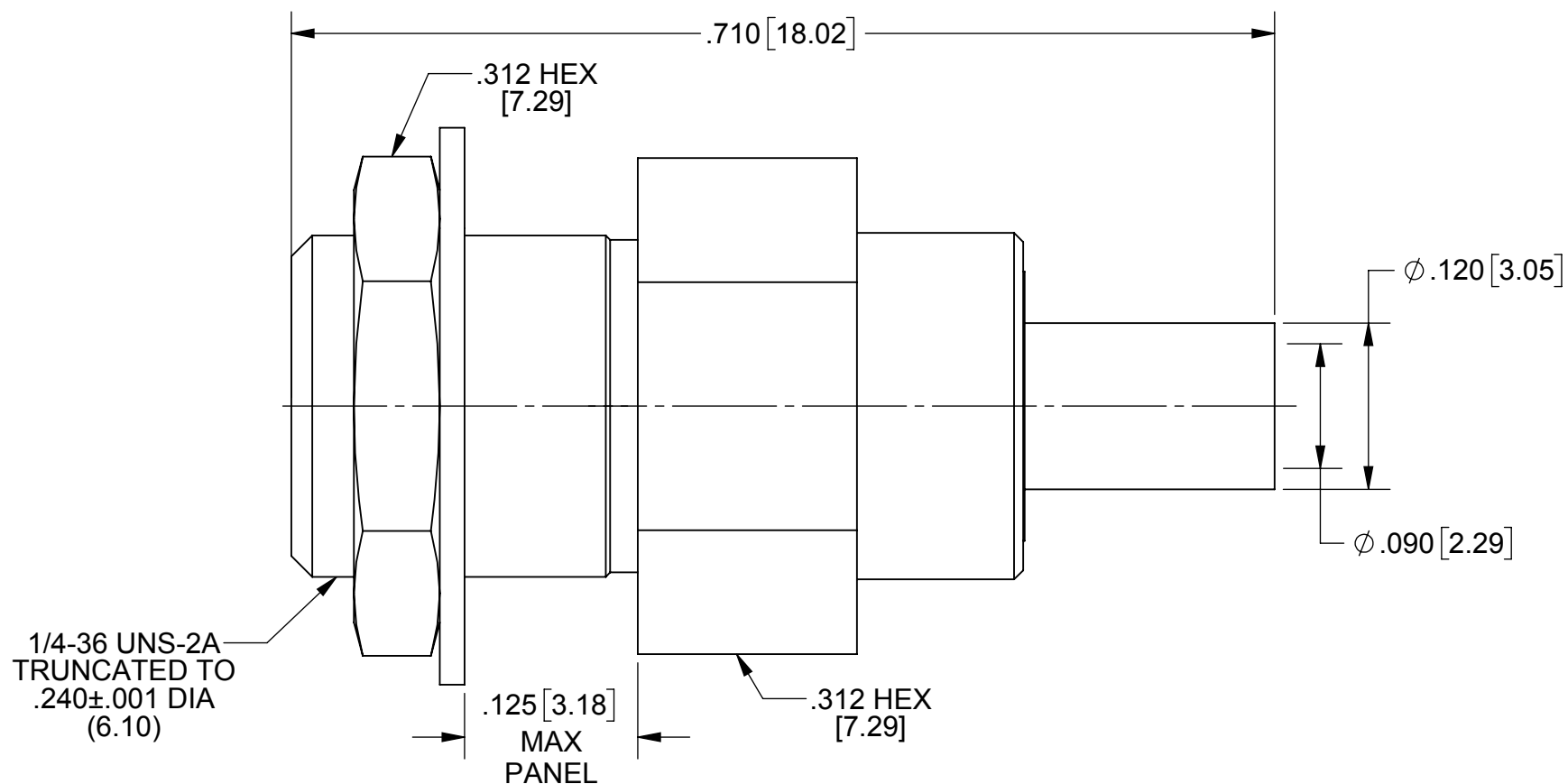


# PRODUCT DATA DRAWING

REVISION HISTORY			
REV	DESCRIPTION	DATE	APPROVED
A	DCN 43104	02/17	MAL



RECOMMENDED MOUNTING HOLE

**MATERIAL:**

OUTER BODY,  
INNER BODY,  
HEX NUT &  
WASHER:

STAINLESS STEEL PER AMS-5640.  
UNS 30300,TYPE 1

**CONTACTS:**

BERYLLIUM COPPER PER ASTM B196,  
ALLOY No. UNS C17300, TD04

**INSULATOR:**

TEFLON PER ASTM-D-1710

**FINISH:**

OUTER BODY,  
INNER BODY,  
HEX NUT:

GOLD PER MIL-G-45204, TYPE 1  
GRADE C, CLASS 00; OVER NICKEL  
PER QQ-N-290, CLASS 2.

CONTACTS &  
INNER BODY:

GOLD PER MIL-G-45204, TYPE 1  
GRADE C, CLASS 00; OVER NICKEL  
PER QQ-N-290, CLASS 2.

**PERFORMANCE:**

IMPEDANCE: 50 OHMS  
FREQ. RANGE: DC TO 28.0 GHz  
DWV: 675 VRMS  
INSUL. RES.: 5000 MEGAOHMS. MIN

MATERIAL: SEE NOTES	DIMENSIONS ARE IN INCHES TOLERANCES: FRACTIONAL: ±1/64 ANGULAR: X° ±1'0" X°X' ±15'	UNLESS OTHERWISE SPECIFIED 1) ALL DIMENSIONS ARE IN INCHES (MILLIMETERS) 2) ALL DIMENSIONS ARE AFTER PLATING. 3) BREAK CORNERS & EDGES .005 R. MAX. 4) CHAM. 1ST & LAST THREADS. 5) SURFACE ROUGHNESS 63 MIL-STD-10. 6) DIA.'S ON COMMON CENTERS TO BE CONCENTRIC WITHIN .005 T.I.R. 7) REMOVE ALL BURRS	 2400 Centrepark West Drive, Suite 100 West Palm Beach, FL 33409 TITLE: <b>BMMA JACK BLKHD CONNECTOR</b>
FINISH: SEE NOTES	DECIMAL: .X ±.030 .XX ±.010 .XXX ±.005	INTERPRET DIMENSIONS AND TOLERANCES PER ASME Y14.5M - 1994	
SURFACE AREA: N/A	THIRD ANGLE PROJECTION	DRAWN: VB 02/16/17	SIZE: B CAGE CODE: 95077 DWG. NO.: 1444-6001
PROPRIETARY THE INFORMATION CONTAINED IN THIS DRAWING IS THE SOLE PROPERTY OF SV MICROWAVE, INC. ANY REPRODUCTION IN PART OR AS A WHOLE WITHOUT THE WRITTEN PERMISSION OF SV MICROWAVE, INC IS PROHIBITED.		CHECKED: MAL 02/16/17	SCALE: 4:1
		APPROVED: MAL 02/16/17	SHEET 1 OF 1