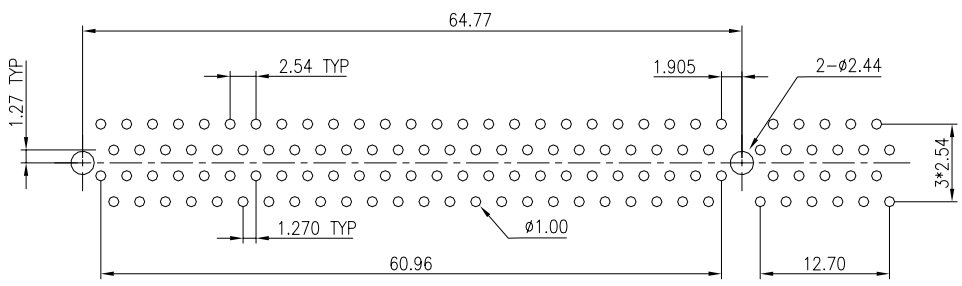
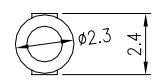


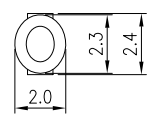
SECTION A-A



RECOMMENDED PCB LAYOUT (TOP VIEW)



SECTION B-B
SCALE 5 : 1



SECTION C-C
SCALE 5 : 1

MATERIAL
 INSULATOR: GLASS-REINFORCED THERMOPLASTIC.
 CONTACT: PHOSPHOR BRONZE.
 PLATING: MATING AREA - SEL. GOLD OVER NICKEL.
 SOLDER AREA - TIN/LEAD OVER NICKEL.

ELECTRICAL
 VOLTAGE RATING: 250 VAC RMS.
 CURRENT RATING: 1 AMP.
 DIELECTRIC WITHSTANDING VOLTAGE: 500 VAC RMS 60Hz FOR 1 MINUTE.
 INSULATION RESISTANCE: 1000 MEGOHMS MIN AT 500 VDC.
 CONTACT RESISTANCE: 30 MILLIOHMS MAX AT 1 AMP DC.

MECHANICAL
 RETENTION FORCE: 460 GRAMS MIN PER CONTACT.
 INSERTION FORCE: 230 GRAMS MAX PER CONTACT PAIR.
 WITHDRAWAL FORCE: 15 GRAMS MIN PER CONTACT PAIR.

ENVIRONMENTAL
 TEMPERATURE RANGE: -55°C TO +85°C.

				TOLERANCE		Sullins Electronics Corp San Marcos, CA www.SullinsElectronics.com		TITLE: PCI 120P CONN				
				LINEAR	ANGLES			PART NO.	TRWB060DKHN-T578			
D	CHANGED #1 POS. INDICATOR	JFW	12/23/03	X.±0.20	X'.±	APPD:	MAT'L:	DWG NO.	P12005004			
C	Hole Dia to 2.44	Nop	Aug-8-01	.XX±0.10	.XX'±	CHKD:	FINISH:		UNITS	SCALE	SHEET	REV
REV	ECN NO.	NAME	DATE	.XXX±0.05	.XXX'±	DRWN: Jason Deng	Q'TY:		MM	2 : 1	1 OF 1	D