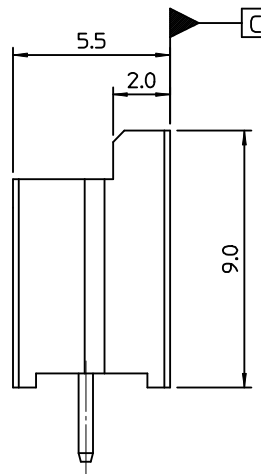
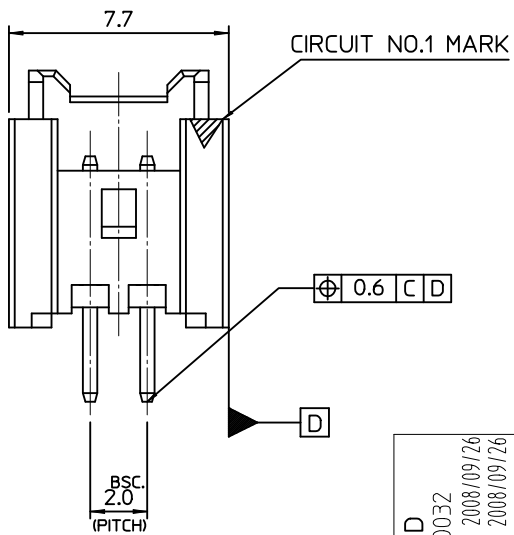


RECOMMENED P.C.BOARD HOLE DIM.(REF)  
(PCB THICKNESS : 1.6mm)



NOTES

- MATERIAL :  
WAFER : POLYAMIDE, GLASS FILL, UL94V-0, COLOR OF NATURAL  
PIN : BRASS, TIN PLATING
- MATED PART: 35507-02\*\*
- PRODUCT SPECIFICATION NO.: PS-104002-001
- PACKAGING SPECIFICATION NO. : PK-104002-0099

TABLE

2	104002-0219	1040020219
CKT'S	ENG. NO	ORDER NO.

NEW RELEASED EC NO: KOR2009-0032 DRWN:SKHAN01 2008/09/26 CHKD:WY. YANG 2008/09/26 APPR: YUNS IKK IM 2008/09/26	DESCRIPTION A	QUALITY SYMBOLS	GENERAL TOLERANCES (UNLESS SPECIFIED)		DIMENSION STYLE MM ONLY		SCALE 4:1	DESIGN UNITS METRIC	THIRD ANGLE PROJECTION	
		▽=0	mm	INCH	DRAWN BY SK.HAN	DATE 2009/09/03	TITLE 2.0MM SHERLOCK WAFER FOR ASS'Y			
		∇=0	4 PLACES ± ---	± ---	CHECKED BY WY. YANG	DATE 2009/09/03				
			ANGULAR ± 1 °	3 PLACES ± ---	± ---	APPROVED BY EH. JUNG	DATE 2009/09/03	MATERIAL NO. SEE TABLE		
		2 PLACES ± 0.2	± ---	MATERIAL NO. SEE TABLE		DOCUMENT NO. SD-104002-001				
		1 PLACE ± 0.3	± ---	MATERIAL NO. SEE TABLE		SHEET NO. 1 OF 01				
DRAFT WHERE APPLICABLE MUST REMAIN WITHIN DIMENSIONS			THIS DRAWING CONTAINS INFORMATION THAT IS PROPRIETARY TO MOLEX INCORPORATED AND SHOULD NOT BE USED WITHOUT WRITTEN PERMISSION							