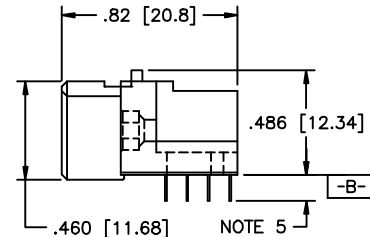
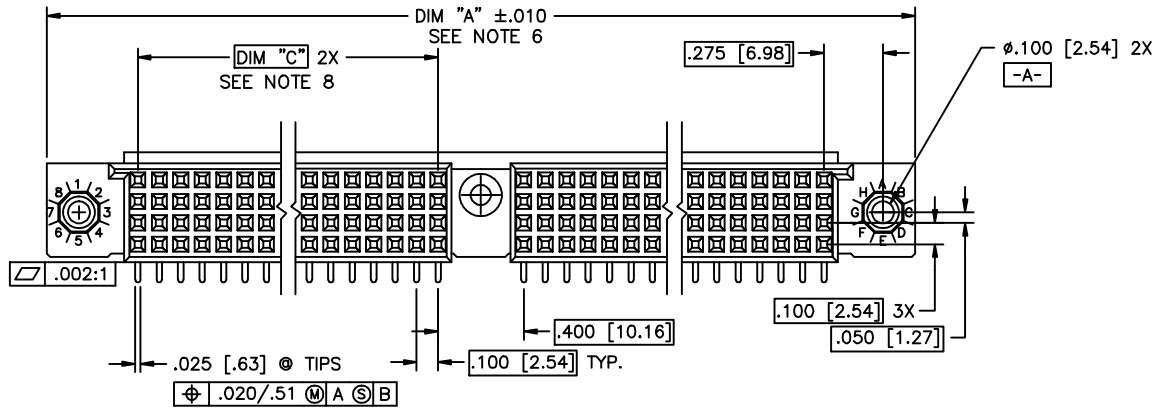
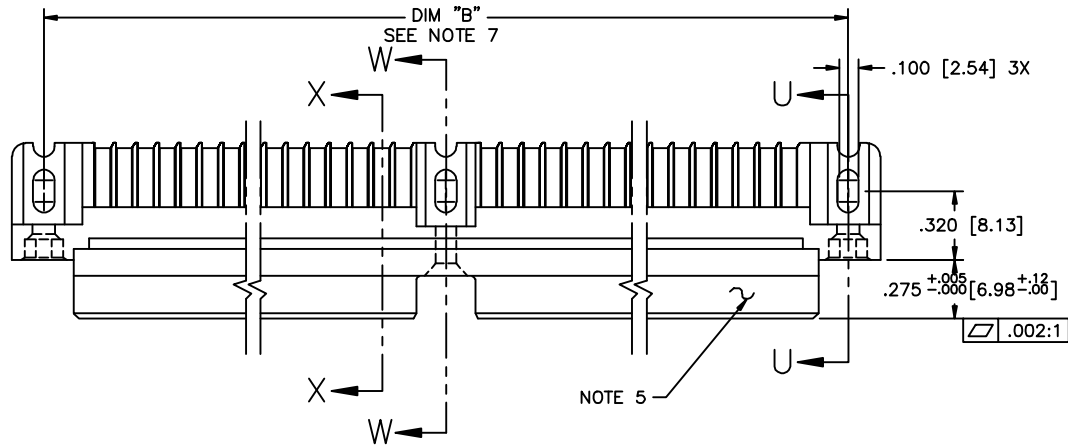


PRODUCT NUMBER

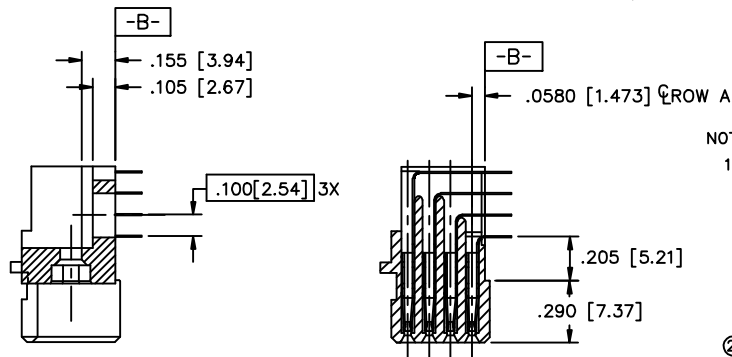
SEE NOTE 1



mat'l. code SEE NOTE 3				surface ISO 902	tolerance ISO 406 ISO 7001	projection ISO 1001	product family HPC
ltr	ecn no	dr	date	tolerances unless otherwise specified		INCH/MM	title 4 ROW R/A RECEPTACLE SOLDER TAIL, 1 GUIDE PIN
F	v41511	GAH	10/13/94	angles	XXX.X/XXX.X	scale 1:1	dwg no 50004
G	v50266	SAR	9/05/95	linear	XXX.X/XXX.X		sheet 1 of 2 size A3
H	v82251	HTB	12/28/98	α±z'	XXX.X/XXX.X		type Product Customer Drawing
J	v00253	JWS	1/12/00	dr	D. SHEAFFER	1/07/90	
K	v05-0510	LP	7/18/05	engr	S. CLARK	1/07/90	
L	m06-0255	EAE	7/06/06	chr	S. CLARK	1/07/90	
M	m08-0280	AGS	9/30/08	appd	S. CLARK	1/07/90	
sheet	revision	M	M				
index	sheet	1	2				

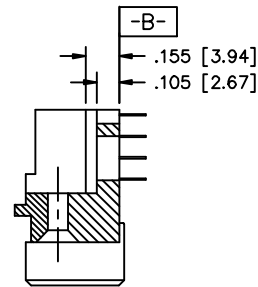
FCJ  
FCJconnect.com  
Copyright FCJ

PRODUCT NUMBER SEE NOTE 1	NUMBER OF POSITIONS SEE NOTE 2	"Z" - TAIL LENGTH	SOLDER TAIL PLATING	CONTACT PLATING NOTE 11
50004-1YYYZ	YYY	NOTE 4	TIN LEAD	30u"/.76um Au
50004-3YYYZ	YYY	NOTE 4	TIN LEAD	50u"/1.27um Au
50004-5YYYZ	YYY	NOTE 4	TIN LEAD	30u"/.76um GXT
50004-5YYYZLF	YYY	NOTE 4	TIN	30u"/.76um GXT



SECTION U-U

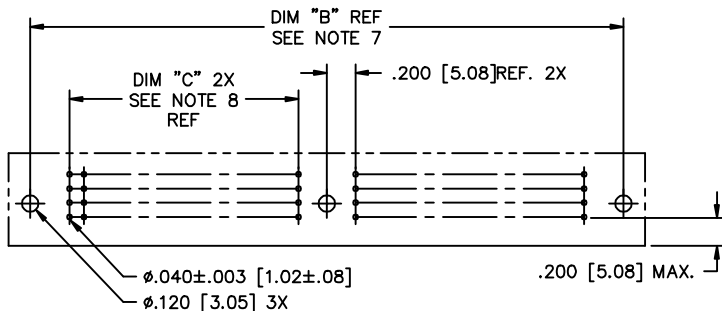
SECTION X-X



SECTION W-W

NOTES:

- PRODUCT NUMBERING CODE:  
50004 - X YYY Z LF  
LEAD FREE (OPTIONAL WITH GTX VERSION)  
TAIL LENGTH (NOTE 4)  
NO. OF POSITIONS (NOTE 2)  
PLATING (SEE TABLE)  
BASE NUMBER
- THIS PRODUCT IS CONFIGURED IN SIZES OF 20 THRU 122 COLUMNS IN INCREMENTS OF TWO.  
i.e.: 20,22,24,26.....118,120,122.
- HOUSING MATERIAL: GLASS AND MINERAL FILLED THERMOPLASTIC.  
CONTACT MATERIAL: BeCu
- "Z" - TAIL LENGTH OPTIONS:  
E = .125±.010 / 3.18±.25  
F = .145±.010 / 3.68±.25  
H = .180±.010 / 4.57±.25
- COMPANY NAME, PART NUMBER AND LOT CODE TO APPEAR ON THIS SURFACE PER BUS-12-108.
- DIMENSION "A" CALCULATION = .100 (2.54) X NO. OF COLUMNS + 1.05 (26.7)
- DIMENSION "B" CALCULATION = .100 (2.54) X NO. OF COLUMNS + .750 (19.05)
- DIMENSION "C" CALCULATION = .100 (2.54) X NO. OF COLUMNS DIVIDED BY 2 - .100 (2.54)
- PRODUCT WITH "LF" SUFFIX MEETS EUROPEAN UNION DIRECTIVES AND OTHER COUNTRY REGULATIONS AS DESCRIBED IN GS-22-008.
- THIS HOUSING WILL WITHSTAND EXPOSURE TO 260 DEGREES C PEAK TEMPERATURE FOR 10 - 30 SECONDS IN A CONVECTION, INFRA-RED OR VAPOR PHASE REFLOW OVEN.
- PLATING OPTION:  
MAY BE EITHER GOLD OR GXT PLATED AT MANUFACTURER'S OPTION.



RECOMMENDED PCB LAYOUT  
(ALL HOLES LOCATED ON .100 [2.54] GRID UNLESS OTHERWISE SPECIFIED)

mat'l. code		NOTE 3		surface	tolerance	projection	product family
				ISO 1902	ISO 406	INCH/MM	HPC
				ISO 1101	ISO 1101		title
ltr	ecn no	dr	date	tolerances unless otherwise specified		scale 1:1	4 ROW R/A RECEPTACLE SOLDER TAIL, 1 GUIDE PIN
M				angles	linear		
						sheet 2 of 2	size
				dr	D. SHEAFFER	1/07/90	A3
				engr	S. CLARK	1/07/90	
				chr	S. CLARK	1/07/90	
				appd	S. CLARK	1/07/90	type
sheet	revision						Product Customer Drawing
index	sheet						