

NOTES:

1. MATERIAL:

- A) BACKSHELL COPPER ALLOY 172 PER QQ-A-533.
- B) BACKSHELL SCREW STAINLESS STEEL PER QQ-S-763, 300 SERIES
- C) CLAMP BAR STAINLESS STEEL PER QQ-S-766, 300 SERIES
- D) TRANSITION ALUMINUM ALLOY PER QQ-A-356.
- E) CLAMP SCREW STAINLESS STEEL PER QQ-S-766, 300 SERIES
- F) TINEL™ LOCK RING ALLOY X

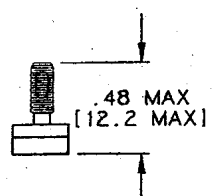
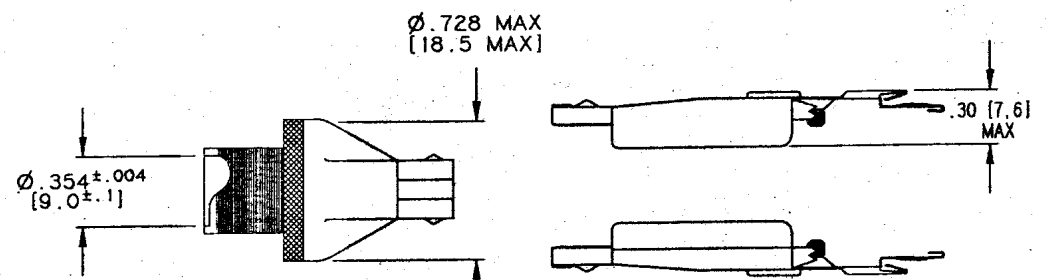
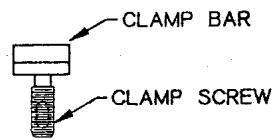
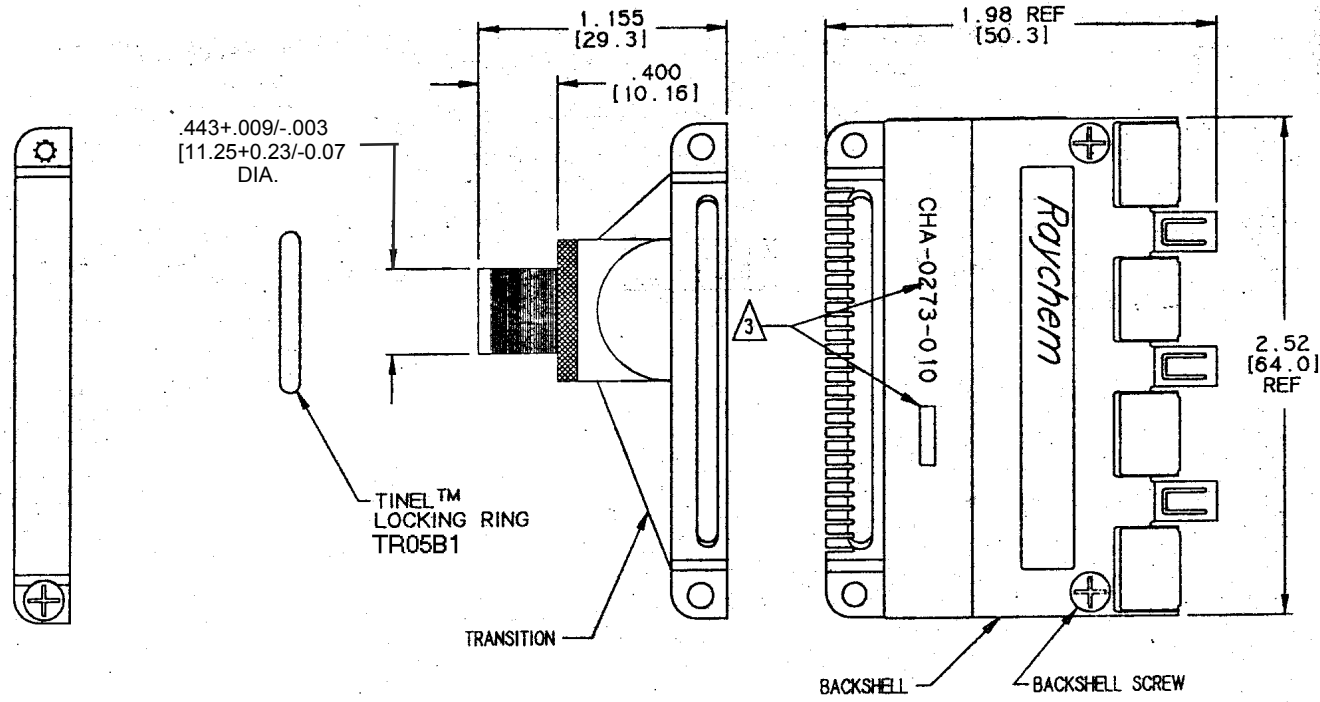
2. FINISH:

- A) BACKSHELL CADMIUM PLATED PER QQ-P-416
- B) BACKSHELL SCREW CADMIUM PLATED PER QQ-P-416
- C) CLAMP BAR CADMIUM PLATED PER QQ-P-416
- D) TRANSITION CADMIUM PLATED PER QQ-P-416
- E) CLAMP SCREW CADMIUM PLATED PER QQ-P-416
- F) TINEL™ LOCK RING AS MANUFACTURED

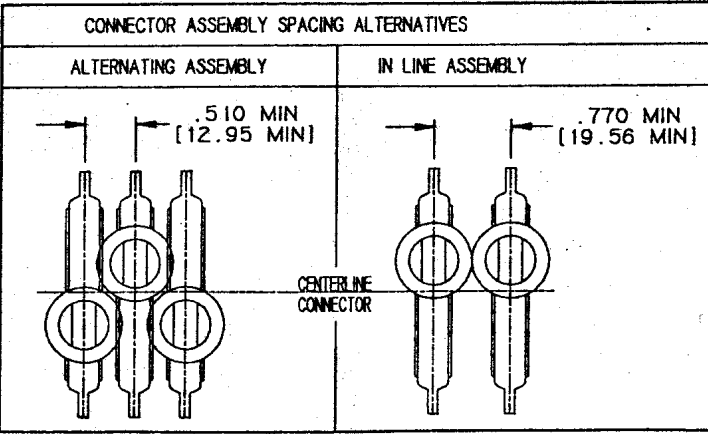
3. RAYCHEM PART NUMBER CHA-0273-010 AND DATE CODE ARE STAMPED APPROXIMATELY AS SHOWN.

4. THIS PRODUCT HAS NOT BEEN QUALIFIED TO RAYCHEM SPECIFICATION C-6111 AND C-6119. IT IS THE USERS RESPONSIBILITY TO QUALIFY IT FOR THE USERS APPLICATION.

REVISIONS			
LTR	DESCRIPTION	DATE	APPROVED
NC	RELEASED PER ECN T-17877	92NOV11	ZET
A	REVISED PER ECN T-18422	93AUG 27	3g
B	REVISED PER DCR# T-23830	12/15/99	M.HIGGY
C	REV PER ECO 15-017642	CT 1-27-16	CD



If this document is printed it becomes uncontrolled. Check with the web for latest revision.



SPECIFICATION CONTROL DRAWING © Raychem Corp. 1992

UNLESS OTHERWISE SPECIFIED DIMENSIONS ARE IN INCHES. AND TOLERANCES ARE: DEC .XXX ± .010 DEC .XX ± .02 ANGLE	DRAWN D. PIQUE	DATE 92OCT07	Raychem		
	CHECKED	DATE	RAYCHEM CORPORATION 300 CONSTITUTION DRIVE MENLO PARK, CALIFORNIA 94025		
	APPROVED 3g	DATE 93 AUG 24	TITLE BACKSHELL, PLUG, 2" ROUND WIRE OFFSET, CADMIUM PLATED MTC SERIES		
	THIRD ANGLE PROJECTION		SIZE C	CODE IDENT. NO. 06090	DWG. NO. CHA-0273-010
MATERIAL	CAD NAME	P.C.N.	DO NOT SCALE THIS DRAWING SHEET 1 OF 1		