

6

5

4

3

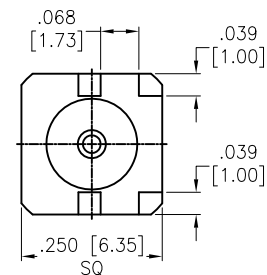
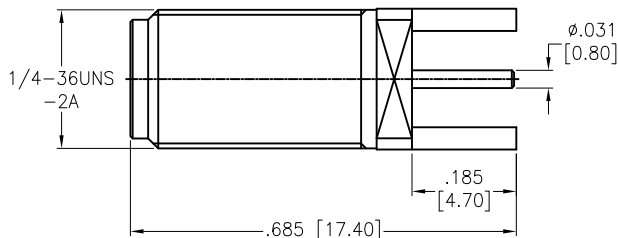
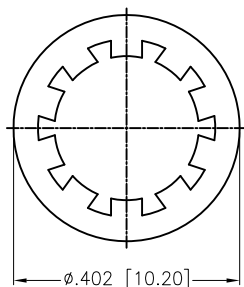
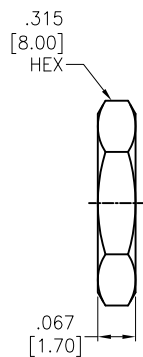
2

1

APPROVED: \_\_\_\_\_

DATE: \_\_\_\_\_ TITLE: \_\_\_\_\_

Rev	AWO #	Description	Date	Appr
-		RELEASED	7/20/16	



HEX NUT	BRASS	GOLD
WASHER	S50C	GOLD
CONTACT PIN	BRASS	GOLD
INSULATOR	PTFE	WHITE
BODY	BRASS	GOLD
DESCRIPTION	MATERIAL	FINISH

**SPECIFICATIONS:**

Electrical:  
 Nominal Impedance: 50 ohms  
 Frequency range: DC 0-18 GHz  
 Working voltage: 335 VOLTS max  
 Proof voltage: 1,000 VOLTS  
 Temperature Rating:  
 Operating temperature: -65°C to +165°C

Environmental:  
 Lead free, RoHS compliant.



MAX. BOARD THICKNESS=1.6mm  
 MAX. PANEL THICKNESS=3.2mm

UNLESS OTHERWISE SPECIFIED  
 ALL DIMENSIONS ARE INCHES [MM]  
 TOLERANCES: EXCEPT AS NOTED

INCHES		HOLES	
.X	± .10	Ø.X	± .10
.XX	± .020	Ø.XX	± .015
.XXX	± .015	Ø.XXX	± .010

# ADAM TECH

909 Rahway Avenue, Union, NJ 07083  
 Phone: 908-687-5000 Fax: 908-687-5710

APPROVALS		DATE
DRAWN	AY	7/20/16
CHECKED	SY	7/20/16
APPROVED		

TITLE		
SMA END LAUNCH BULKHEAD JACK		
SIZE	PART NO.	REV.
X	RF2-145A-T-17-50-G-HDW	-
REF:	S00277T	SCALE: NTS
		SHEET 1 OF 1

6

5

4

3

2

1