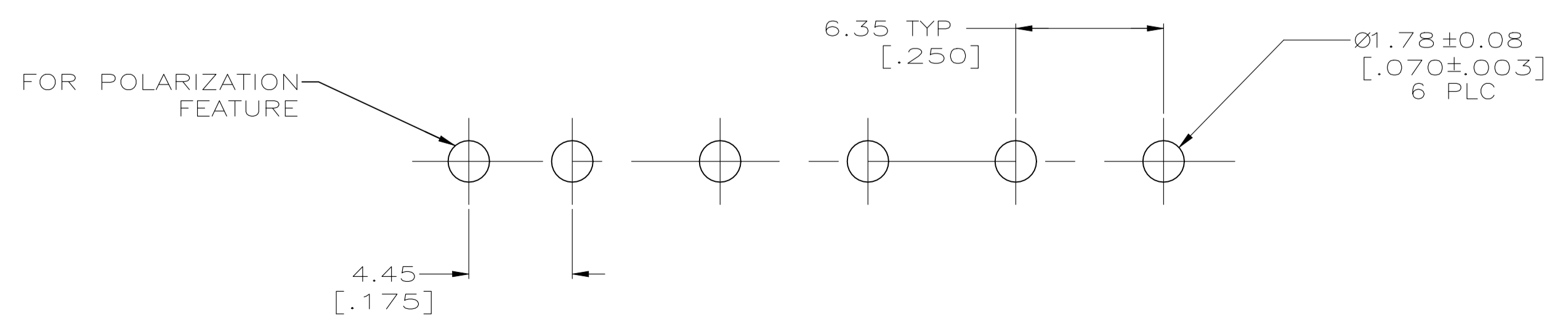
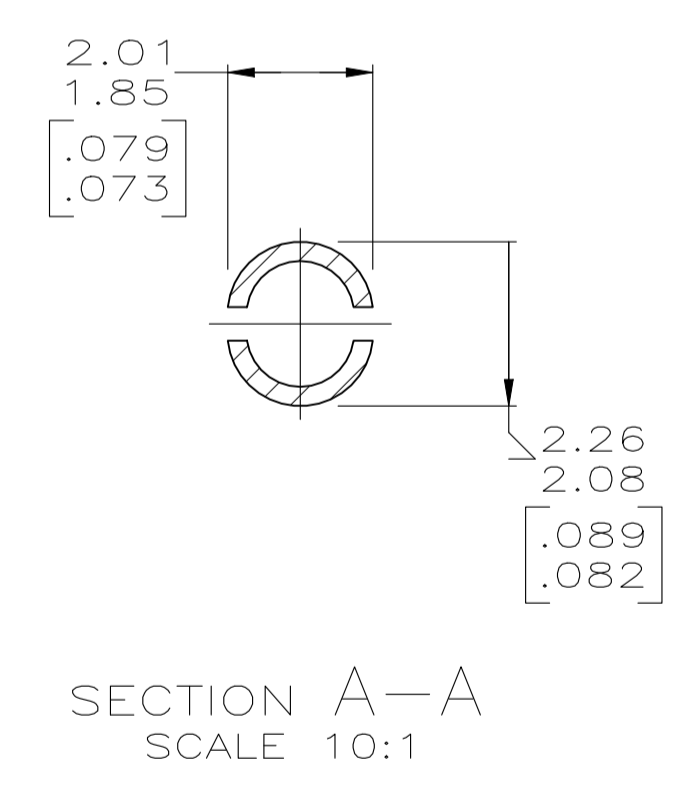
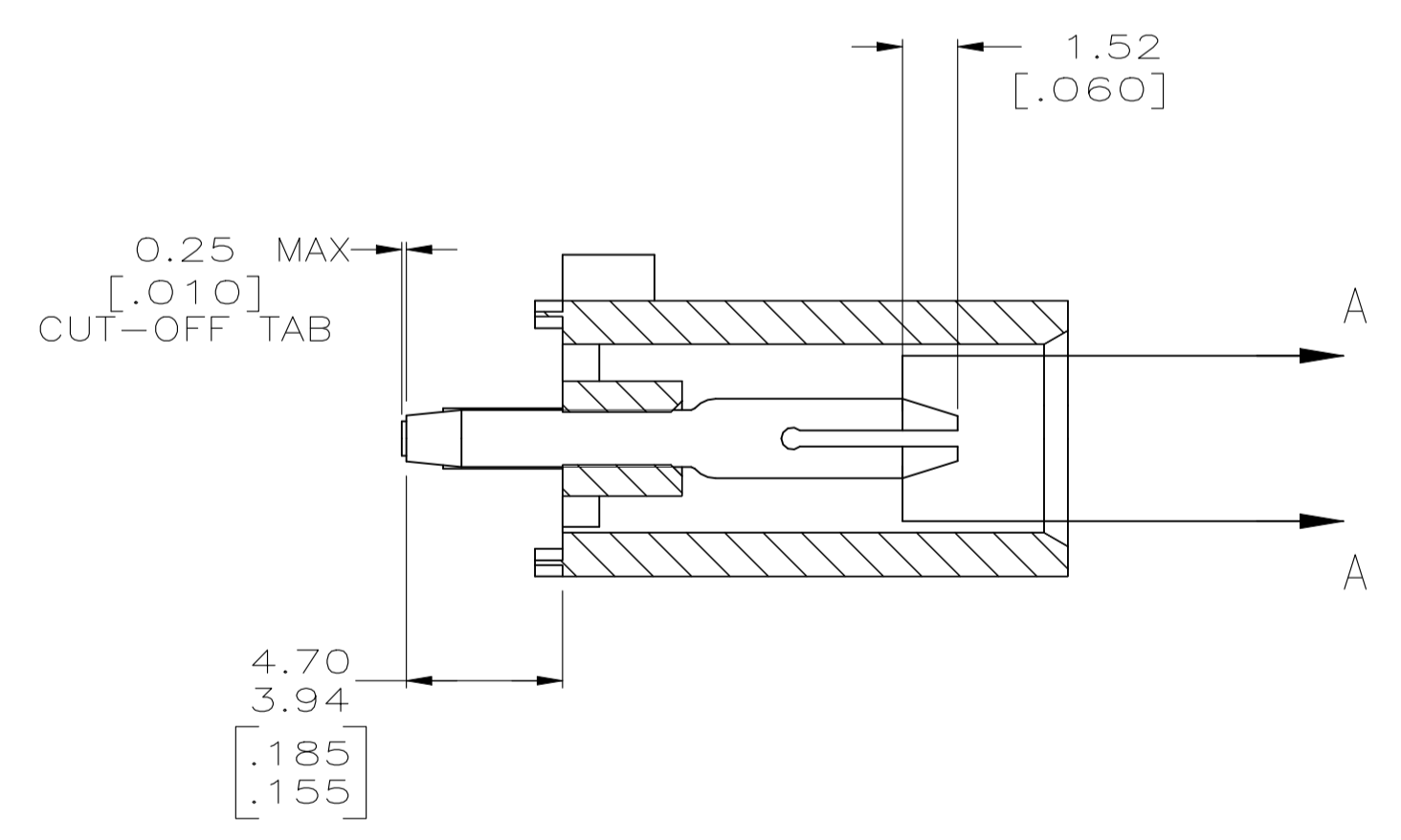
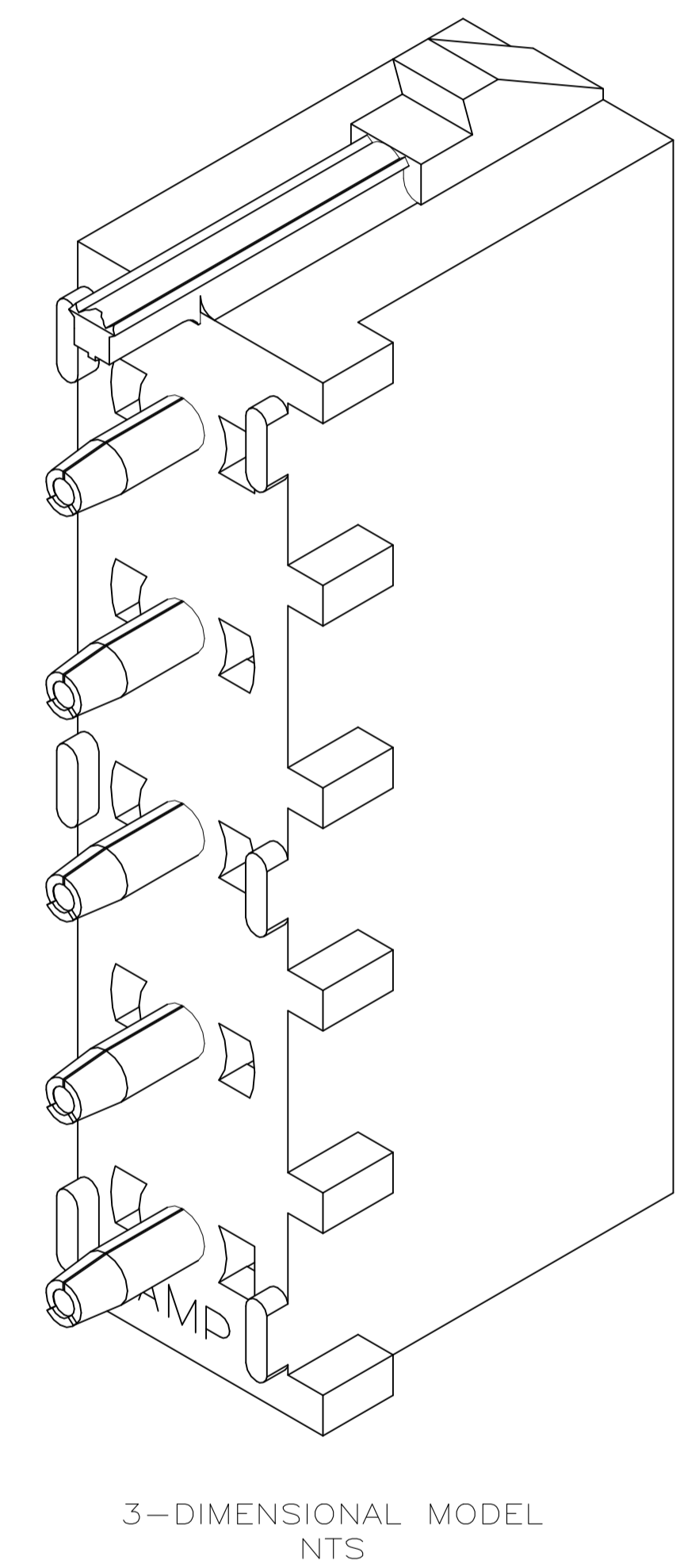
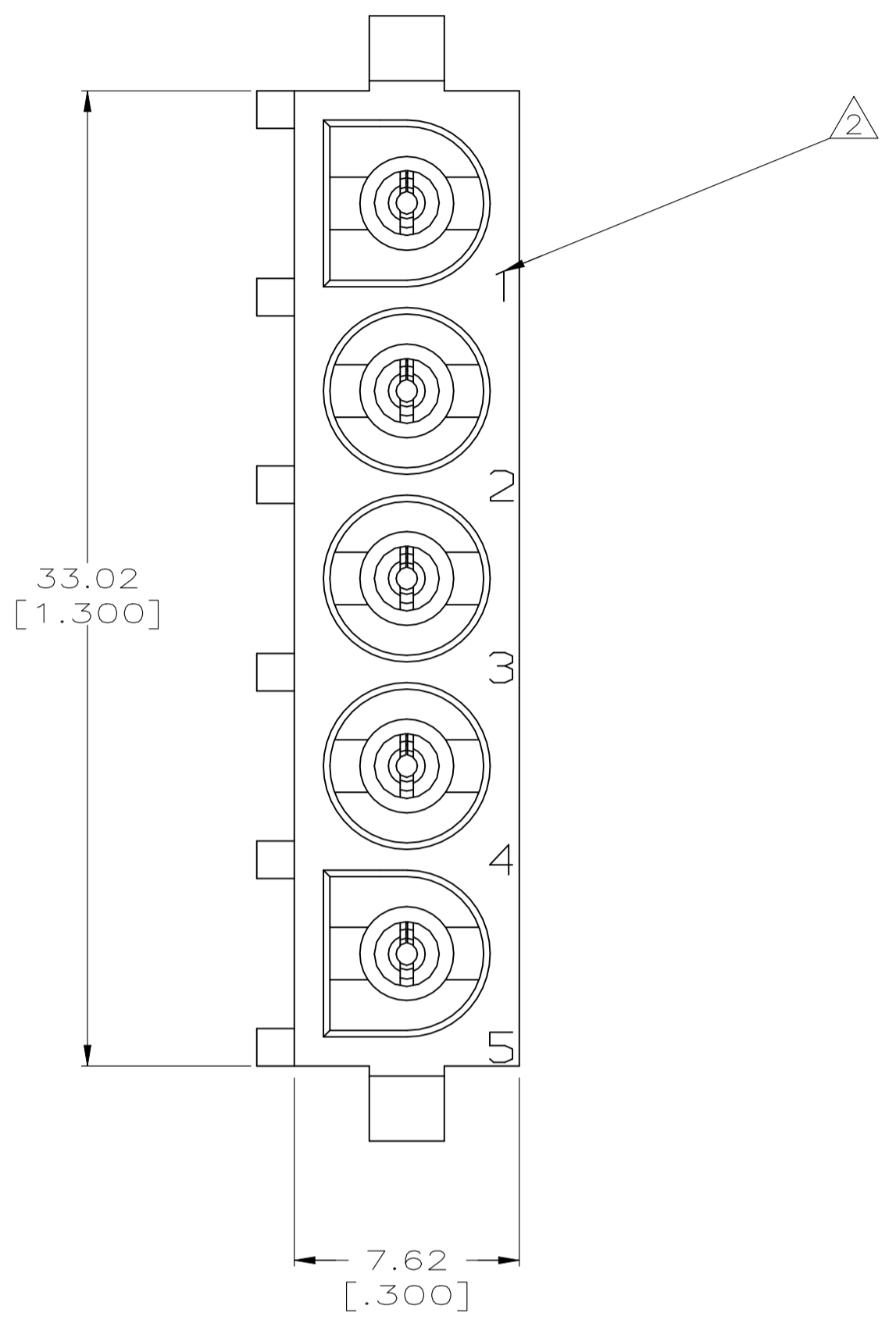
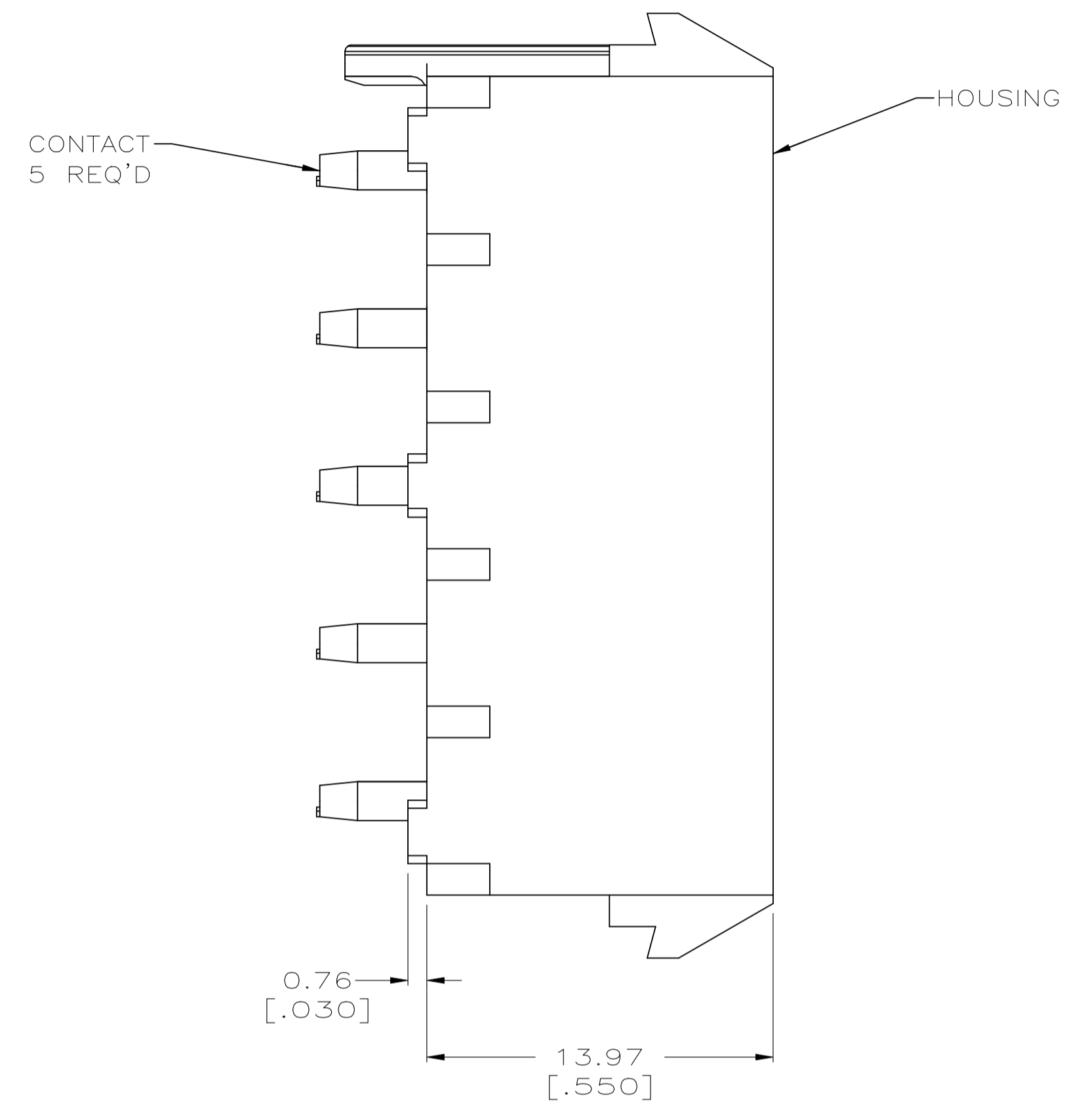
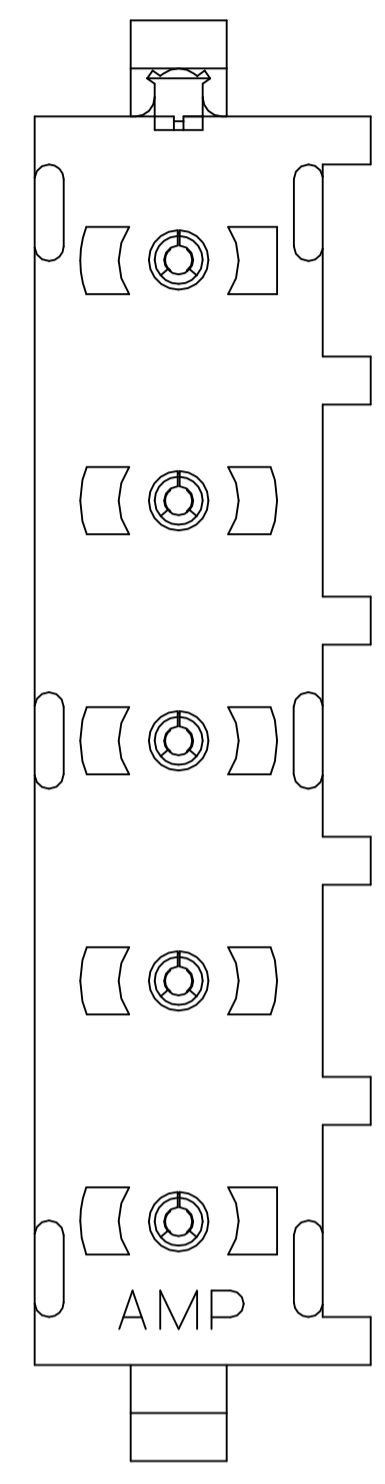


REVISIONS					
P	LTR	DESCRIPTION	DATE	DRN	APVD
J1		REVISED PER ECR-21-117154	01AUG2022	SM	VS

- PARTS COMPLY TO AMP SOLDERABILITY SPECIFICATION 109-11-3.
- CIRCUIT IDENTIFICATION CHARACTERS ARE ADJACENT TO THE INDICATED CAVITIES, BUT LOCATION AND ORIENTATION MAY DIFFER FROM PRINT.
- DIMENSIONS IN BRACKETS ARE IN INCHES.
- DIMENSIONS SHOWN REPRESENT PRODUCT IN DRY CONDITION. ADDITIONAL 2% GROWTH DUE TO END USE LOCATION MOISTURE ABSORPTION MAY OCCUR AND SHOULD BE ACCOUNTED FOR.



RECOMMENDED MOUNTING HOLE PATTERN FOR 1.57 [.062] THICK P.C. BOARD

PHOSPHOR BRONZE, PRE-TIN PIN CONTACT MATERIAL AND FINISH	NYLON, UL94V-2,NATURAL HOUSING MATERIAL	643405-1 PART NO																								
THIS DRAWING IS A CONTROLLED DOCUMENT.																										
DIMENSIONS: mm [INCHES]	TOLERANCES UNLESS OTHERWISE SPECIFIED:	<table border="1"> <tr> <td>0 PLC</td> <td>± -</td> </tr> <tr> <td>1 PLC</td> <td>± -</td> </tr> <tr> <td>2 PLC</td> <td>± 0.13 [.005]</td> </tr> <tr> <td>3 PLC</td> <td>± -</td> </tr> <tr> <td>4 PLC</td> <td>± -</td> </tr> <tr> <td>ANGLES</td> <td>± 0° 30'</td> </tr> </table>	0 PLC	± -	1 PLC	± -	2 PLC	± 0.13 [.005]	3 PLC	± -	4 PLC	± -	ANGLES	± 0° 30'												
0 PLC	± -																									
1 PLC	± -																									
2 PLC	± 0.13 [.005]																									
3 PLC	± -																									
4 PLC	± -																									
ANGLES	± 0° 30'																									
MATERIAL SEE TABLE	FINISH SEE TABLE	<table border="1"> <tr> <td>DRN</td> <td>L. McEACHIN</td> <td>07-JAN-2000</td> </tr> <tr> <td>CHK</td> <td>K. COBLE</td> <td>07-JUN-2000</td> </tr> <tr> <td>APVD</td> <td>K. COBLE</td> <td>07-JUN-2000</td> </tr> <tr> <td>NAME</td> <td colspan="2">PIN HEADER ASSEMBLY, POLARIZED, 5 CIRCUIT UNIVERSAL MATE-N-LOK</td> </tr> <tr> <td>SIZE</td> <td>A1</td> <td>00779</td> </tr> <tr> <td>CAGE CODE</td> <td colspan="2">643405</td> </tr> <tr> <td>DRAWING NO</td> <td colspan="2">643405</td> </tr> <tr> <td>RESTRICTED TO</td> <td colspan="2">-</td> </tr> </table>	DRN	L. McEACHIN	07-JAN-2000	CHK	K. COBLE	07-JUN-2000	APVD	K. COBLE	07-JUN-2000	NAME	PIN HEADER ASSEMBLY, POLARIZED, 5 CIRCUIT UNIVERSAL MATE-N-LOK		SIZE	A1	00779	CAGE CODE	643405		DRAWING NO	643405		RESTRICTED TO	-	
DRN	L. McEACHIN	07-JAN-2000																								
CHK	K. COBLE	07-JUN-2000																								
APVD	K. COBLE	07-JUN-2000																								
NAME	PIN HEADER ASSEMBLY, POLARIZED, 5 CIRCUIT UNIVERSAL MATE-N-LOK																									
SIZE	A1	00779																								
CAGE CODE	643405																									
DRAWING NO	643405																									
RESTRICTED TO	-																									
CUSTOMER DRAWING		SCALE 5:1 SHEET 1 OF 1 REV J1																								

