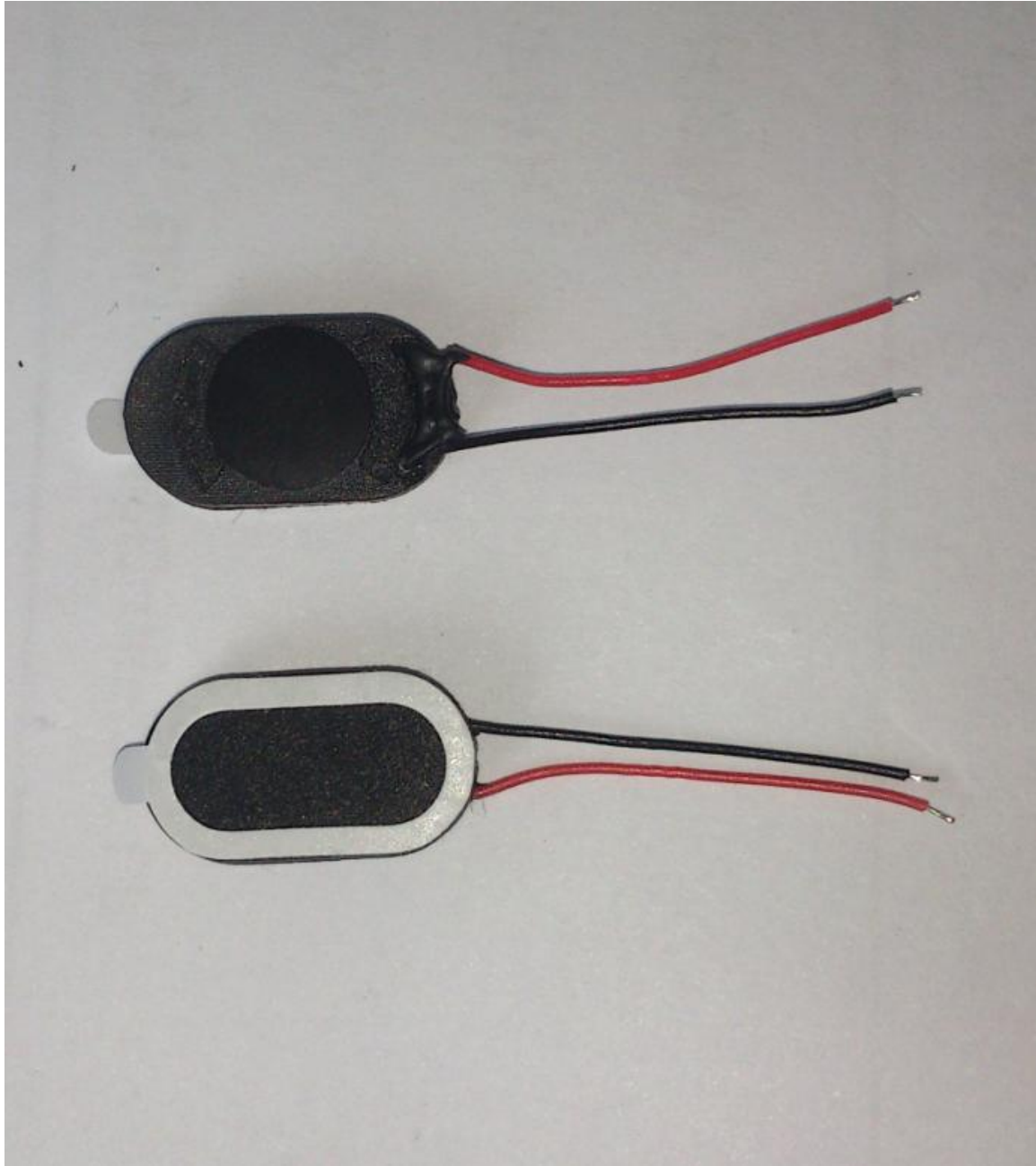


SPECIFICATION

BMS1018-11C-08H05RW025 LF





APPROVAL SHEET FOR SMARTPHONE SPEAKER

TOTAL PAGE

13

www.bestargroups.com

RoHS

| | | | |
|--------------|------------|-------------|---------------------------|
| Customer | | Model Name | BMS1018-11C-08H05RW025 LF |
| Customer P/N | | Product No. | 136001 |
| Date | 28 Feb. 14 | Issue No. | BS/TES01.617B |
| Page | 01 of 13 | Issue Date | 14/02/28 |

Table of Contents:

- 1.Test Climatic Condition
- 2.Description
- 3.Characteristics
- 4.Test Setup
- 5.Drawing
- 6.Reliability Test
- 7.Packing
- 8.History Change Record

| Drawn by | Checked by | Approved by | Customer approved |
|----------|------------|-------------|-------------------|
| | | | |

BESTAR HOLDING CO.,LTD

No.199 HuangHe West Road.New district,ChangZhou,JiangSu Province,P.R.China

Tel: +86 519 88222567 **Fax:** +86 519 88222551

E-mail:wu@be-star.com **http://**www.bestargroups.com

BMS1018-11C-08H05RW025 LF

1. Test Climatic Condition

- 1.1 Ambient Temperature :15°C~35°C, Preferably at 20°C
- 1.2 Relative Humidity:25% to 75%
- 1.3 Air Pressure:86kPa~106kPa

| No. | Item | Specification |
|-----|-----------------------|--|
| 1. | Dimension | 10X18X4.0(mm) |
| 2. | AC Impedance | 8 ±15%Ω |
| 3. | Rated Input Power | 0.8W |
| 4. | Maximum Input Power | 1.0W |
| 5. | Frequency Frequency | 1400±20%Hz |
| 6. | Frequency Response | FO~15KHZ |
| 7. | Output SPL | 86±3dB (0.1W /0.1m) at 2.0KHZ |
| 8. | Distortion | ≤10% |
| 9. | Buzzes & Rattles | must be normal at 2.53Vrms (sine wave) |
| 10. | Operating Temperature | -20~+80°C |
| 11. | Storage Temperature | -20~+80°C |
| 12. | Weight | ~1.2g |

2. Description

- 2.1 Acoustic component Performance Specification
- 2.2 The present document specifies performance requirements for the acoustic characteristics of speaker

3. Characteristics

- 3.1 Electrical and Mechanical Characteristics

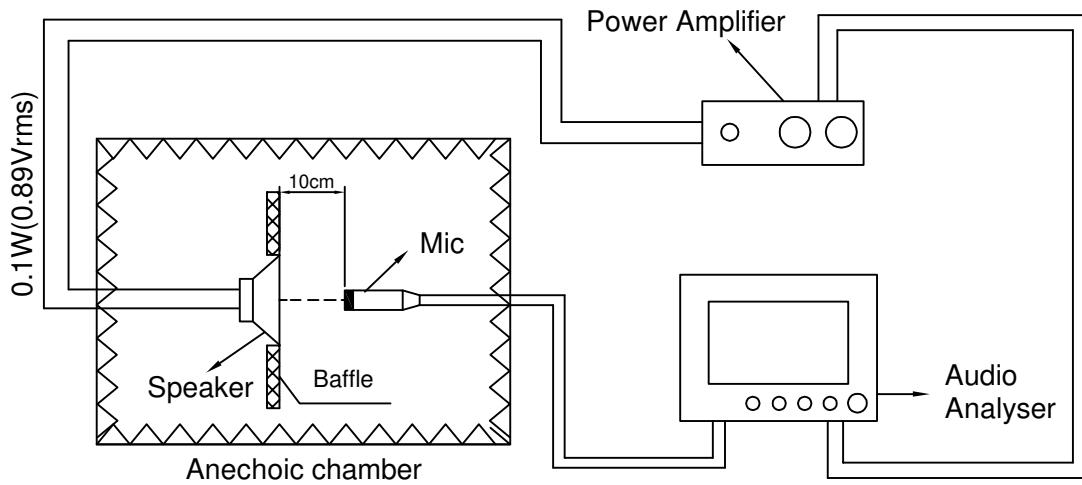
| | | | | | | | |
|-------------------------------------|------|----------|-------|-------------|--------------|---------------------------|---------------|
| | | | | Date: | 14/02/28 | BMS1018-11C-08H05RW025 LF | |
| A | B | 14/02/28 | 任江凤 | Drawn by: | 任江凤 | | |
| | A | 06/07/18 | 朱成兴 | Checked by: | 王凯 | Speaker | |
| | Rev. | Date | Drawn | Note | Approved by: | | 汪珍珍 |
| BESTAR HOLDING CO.,LTD | | | | | | DRG NO:BS/TES01.617B | Page:03 of 13 |
| www.bestargroups.com wu@be-star.com | | | | | | | |

This print and information there in are proprietary to Bestar Holding Co., Ltd. and shall not be used in whole or in part without its written content

BMS1018-11C-08H05RW025 LF

4. Test Setup

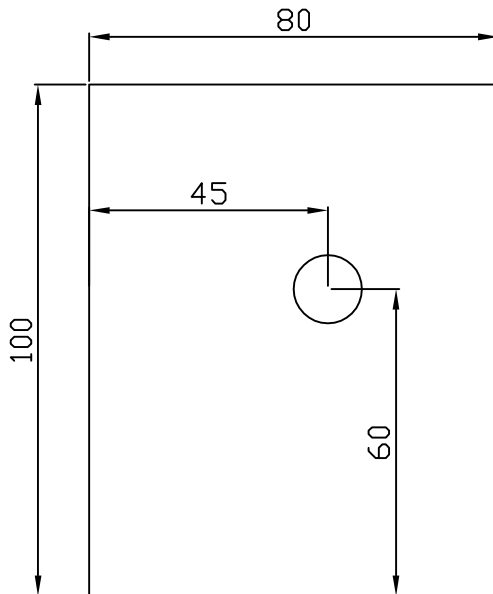
4.1 Speaker Measurement Circuit



4.2 Baffle Drawing

unit:cm

tolerance:±2



4.3 Test Method

The speaker shall be mounted in a baffle of the dimensions 80X100cm show figure 4.2,

The measuring free-field microphone shall be placed 10cm from DUT, on axis.

The test voltage is 0.1W and swept sine-wave range is 100Hz~20KHz with a R80 of test sequence

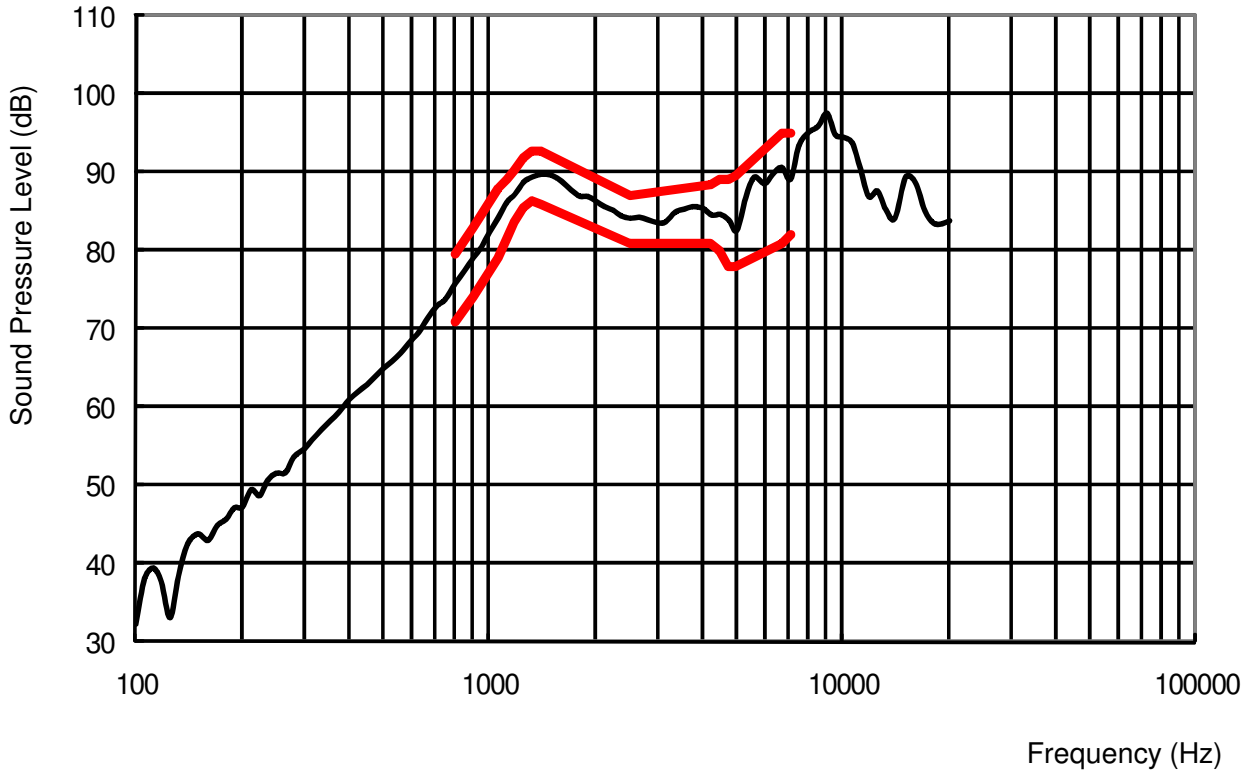
This print and information there in are proprietary to Bestar Holding Co., Ltd. and shall not be used in whole or in part without its written content

| | | | | | | | |
|-------------------------------------|------|----------|------|--------------|----------|---------------------------|---------------|
| | | | | Date: | 14/02/28 | BMS1018-11C-08H05RW025 LF | |
| A | B | 14/02/28 | 任江凤 | Drawn by: | 任江凤 | | |
| | A | 06/07/18 | 朱成兴 | Checked by: | 王凯 | Speaker | |
| Rev. | Date | Drawn | Note | Approved by: | 汪珍珍 | | |
| BESTAR HOLDING CO.,LTD | | | | | | DRG NO:BS/TES01.617B | Page:04 of 13 |
| www.bestargroups.com wu@be-star.com | | | | | | | |

BMS1018-11C-08H05RW025 LF

4.4 Frequency Response Curve (only for reference)

A: Frequency Response Magn 0 dB re 20.00 μ Pa/V 1/12Oct



4.4.1 Sensitivity

SPL is expressed in dB rel 20 μ Pa, computed according to IEC 268-5. Measurement set up according chapter 4.1 and parameters according chapter 4.4.

This test is performed on the production line by 100%.

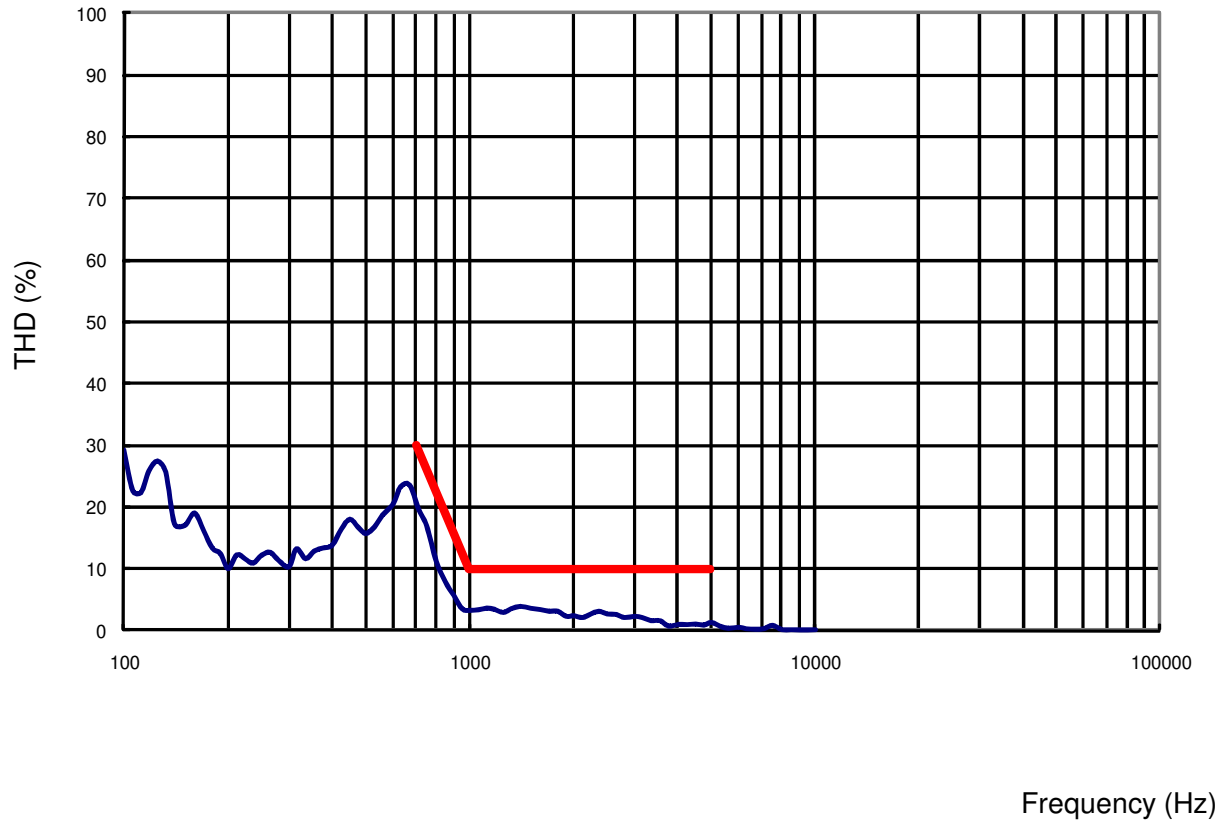
This print and information there in are proprietary to Bestar Holding Co., Ltd. and shall not be used in whole or in part without its written content

| | | | | | | |
|-------------------------------------|------|-------|------|--------------|----------|---------------------------|
| | | | | Date: | 14/02/28 | BMS1018-11C-08H05RW025 LF |
| | | | | Drawn by: | 任江凤 | |
| | | | | Checked by: | 王凯 | |
| Rev. | Date | Drawn | Note | Approved by: | 汪珍珍 | Speaker |
| BESTAR HOLDING CO.,LTD | | | | | | DRG NO:BS/TES01.617B |
| www.bestargroups.com wu@be-star.com | | | | | | Page:05 of 13 |

BMS1018-11C-08H05RW025 LF

4.5 Total Harmonic Distortion (only for reference)

A: Frequency Response Magn 0 dB re 20.00 μ Pa/V 1/12Oct



4.5.1 THD

THD is measured according test set up in chapter 4.1 and parameters according chapter 4.5

This test is performed on the production line by 100%.

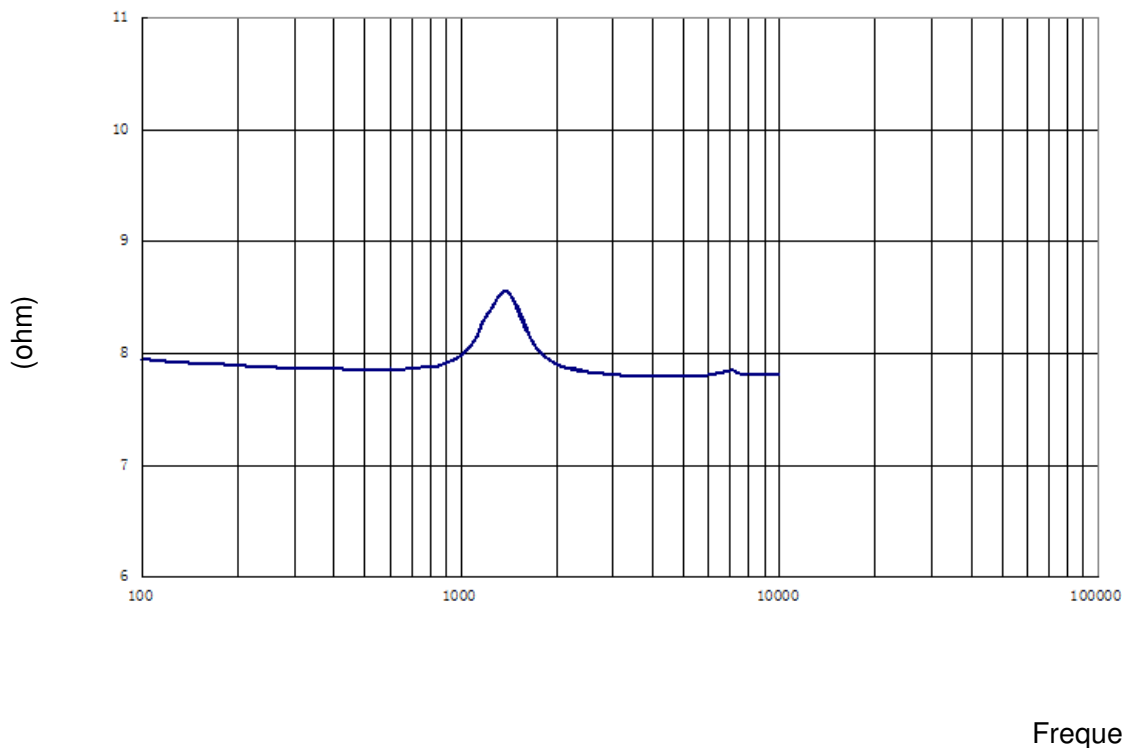
This print and information there in are proprietary to Bestar Holding Co., Ltd. and shall not be used in whole or in part without its written content

| | | | | | | | |
|-------------------------------------|------|----------|------|--------------|----------|---------------------------|---------------|
| | | | | Date: | 14/02/28 | BMS1018-11C-08H05RW025 LF | |
| A | B | 14/02/28 | 任江凤 | Drawn by: | 任江凤 | | |
| | A | 06/07/18 | 朱成兴 | Checked by: | 王凯 | Speaker | |
| Rev. | Date | Drawn | Note | Approved by: | 汪珍珍 | | |
| BESTAR HOLDING CO.,LTD | | | | | | DRG NO:BS/TES01.617B | Page:06 of 13 |
| www.bestargroups.com wu@be-star.com | | | | | | | |

BMS1018-11C-08H05RW025 LF

4.6 F0 Curve (only for reference)

A: Frequency Response Magn 0 dB re 20.00 μ Pa/V 1/12Oct



4.6.1 Resonance Frequency

Resonance frequency is measured according test set up in chapter 4.1 and parameters according chapter 4.6

This test is performed on the production line by 100%.

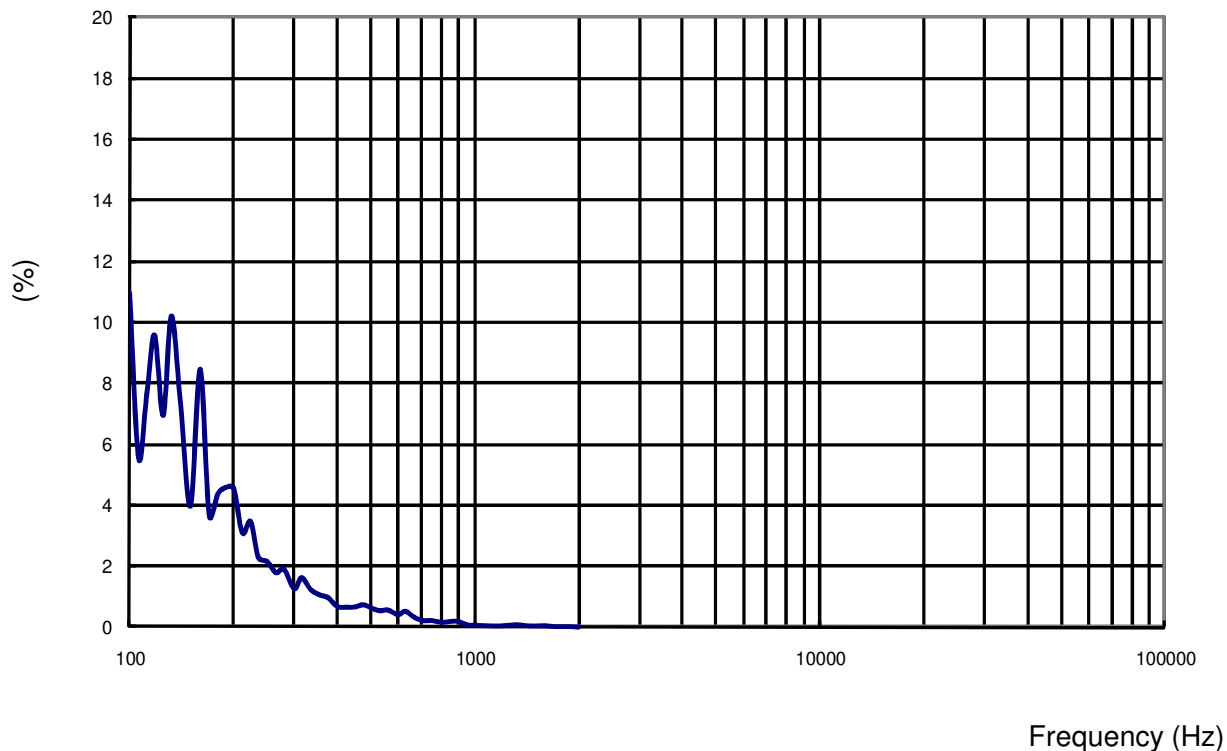
This print and information there in are propriatary to Bestar Holding Co., Ltd. and shall not be used in whole or in part without its written content

| | | | | | | | |
|---|------|----------|------|--------------|----------|---------------------------|---------------|
| | | | | Date: | 14/02/28 | BMS1018-11C-08H05RW025 LF | |
| A | B | 14/02/28 | 任江凤 | Drawn by: | 任江凤 | | |
| | A | 06/07/18 | 朱成兴 | Checked by: | 王 凯 | Speaker | |
| Rev. | Date | Drawn | Note | Approved by: | 汪珍珍 | | |
| BESTAR HOLDING CO.,LTD | | | | | | DRG NO:BS/TES01.617B | Page:07 of 13 |
| www.bestargroups.com wu@be-star.com | | | | | | | |

BMS1018-11C-08H05RW025 LF

4.7 R&B Curve (only for reference)

A: Frequency Response Magn 0 dB re 20.00 μ Pa/V 1/12Oct



4.7.1 R&B

R&B is measured according test set up in chapter 4.1 and parameters according chapter 4.7

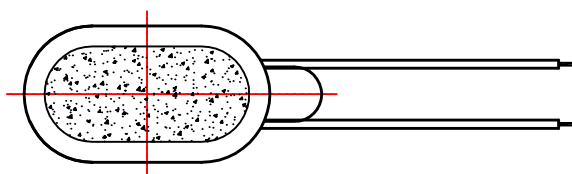
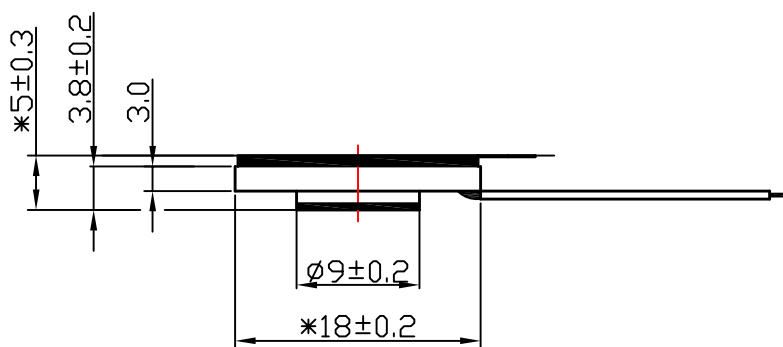
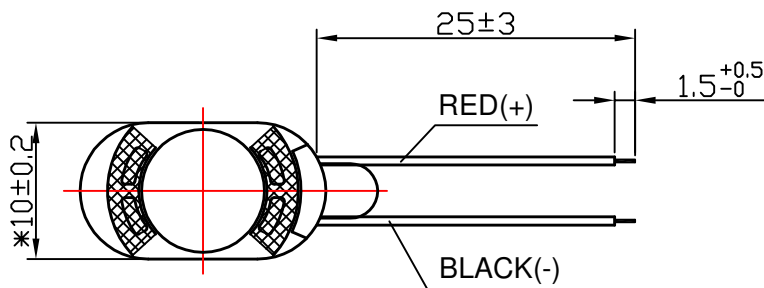
This test is performed on the production line by 100%.

This print and information there in are propriety to Bestar Holding Co., Ltd. and shall not be used in whole or in part without its written content

| | | | | | | | |
|------------------------|------|----------|-------|-------------------------------------|--------------|---------------------------|---------------|
| | | | | Date: | 14/02/28 | BMS1018-11C-08H05RW025 LF | |
| A | B | 14/02/28 | 任江凤 | Drawn by: | 任江凤 | | |
| | A | 06/07/18 | 朱成兴 | Checked by: | 王 凯 | Speaker | |
| | Rev. | Date | Drawn | Note | Approved by: | | 汪珍珍 |
| BESTAR HOLDING CO.,LTD | | | | | | DRG NO:BS/TES01.617B | Page:08 of 13 |
| | | | | www.bestargroups.com wu@be-star.com | | | |

BMS1018-11C-08H05RW025 LF

5. Drawing



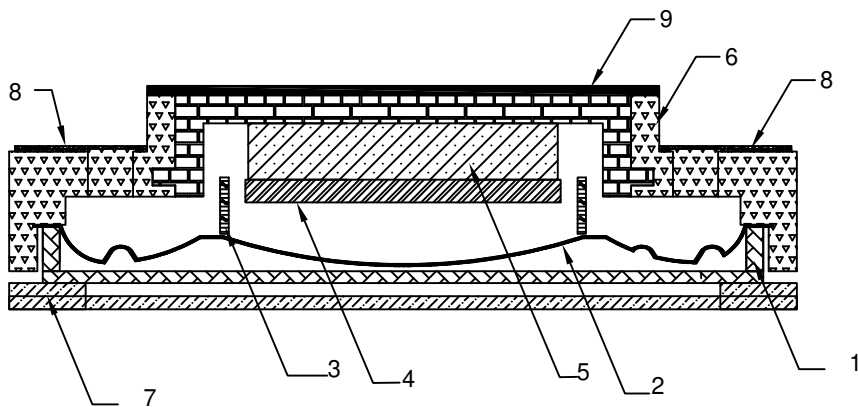
UL1571 AWG32#

Unit:mm

| | | | | | | | |
|------------------------|----------|-------|------|--------------|----------|--|--|
| | | | | Date: | 14/02/28 | BMS1018-11C-08H05RW025 LF | |
| B | 14/02/28 | 任江凤 | | Drawn by: | 任江凤 | | |
| A | 06/07/18 | 朱成兴 | | Checked by: | 王凯 | Speaker | |
| Rev. | Date | Drawn | Note | Approved by: | 汪珍珍 | | |
| BESTAR HOLDING CO.,LTD | | | | | | DRG NO:BS/TES01.617B | Page:09 of 13 |
| | | | | | | www.bestargroups.com | wu@be-star.com |

This print and information there in are proprietary to Bestar Holding Co., Ltd. and shall not be used in whole or in part without its written content

BMS1018-11C-08H05RW025 LF



| No | Description of the part | Material |
|----|-------------------------|----------|
| 1 | Front Cover | SUS |
| 2 | Diaphragm | PEN |
| 3 | Coil | SDHT |
| 4 | Plate | SPCC |
| 5 | Magnet | Nd-Fe-B |
| 6 | Frame | PBT+SPCC |
| 7 | Net | Nonwoven |
| 8 | Net | Nonwoven |
| 9 | sponge | PE |

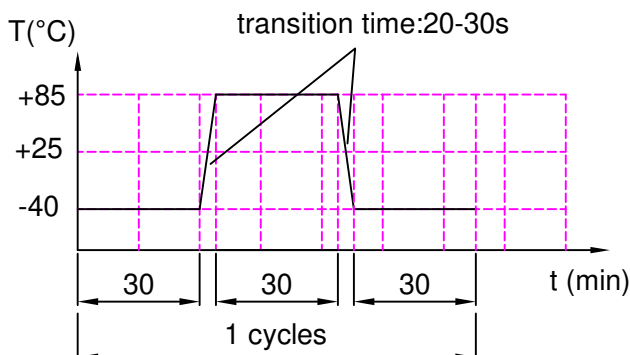
This print and information there in are proprietary to Bestar Holding Co., Ltd. and shall not be used in whole or in part without its written content

| | | | | | | | |
|-------------------------------------|----------|-------|------|--------------|----------|---------------------------|---------------|
| | | | | Date: | 14/02/28 | BMS1018-11C-08H05RW025 LF | |
| B | 14/02/28 | 任江凤 | | Drawn by: | 任江凤 | | |
| A | 06/07/18 | 朱成兴 | | Checked by: | 王凯 | Speaker | |
| Rev. | Date | Drawn | Note | Approved by: | 汪珍珍 | | |
| BESTAR HOLDING CO.,LTD | | | | | | DRG NO:BS/TES01.617B | Page:10 of 13 |
| www.bestargroups.com wu@be-star.com | | | | | | | |

BMS1018-11C-08H05RW025 LF

6. Reliability Test

| | |
|----------------------------|-----------------|
| 6.1 Load Test | |
| Power | 0.7W sine wave) |
| Duration | 96hrs |
| 6.2 High Temperature Test | |
| Temperature | +85±3℃ |
| Duration | 48hrs |
| 6.3 Low Temperature Test | |
| Temperature | -20±3℃ |
| Duration | 96hrs |
| 6.4 Damp Heat | |
| Temperature | 40±3℃ |
| Relative Humidity | 90%-95%RH |
| Duration | 96hrs |
| 6.5 Temperature Cycle Test | |
| Cycle | 4 |



| | |
|---------------|-------------------------------|
| 6.6 Drop Test | |
| Height | 100cm (in state of packing) |
| Times | 10 (Drop onto hardwood board) |

Notice:

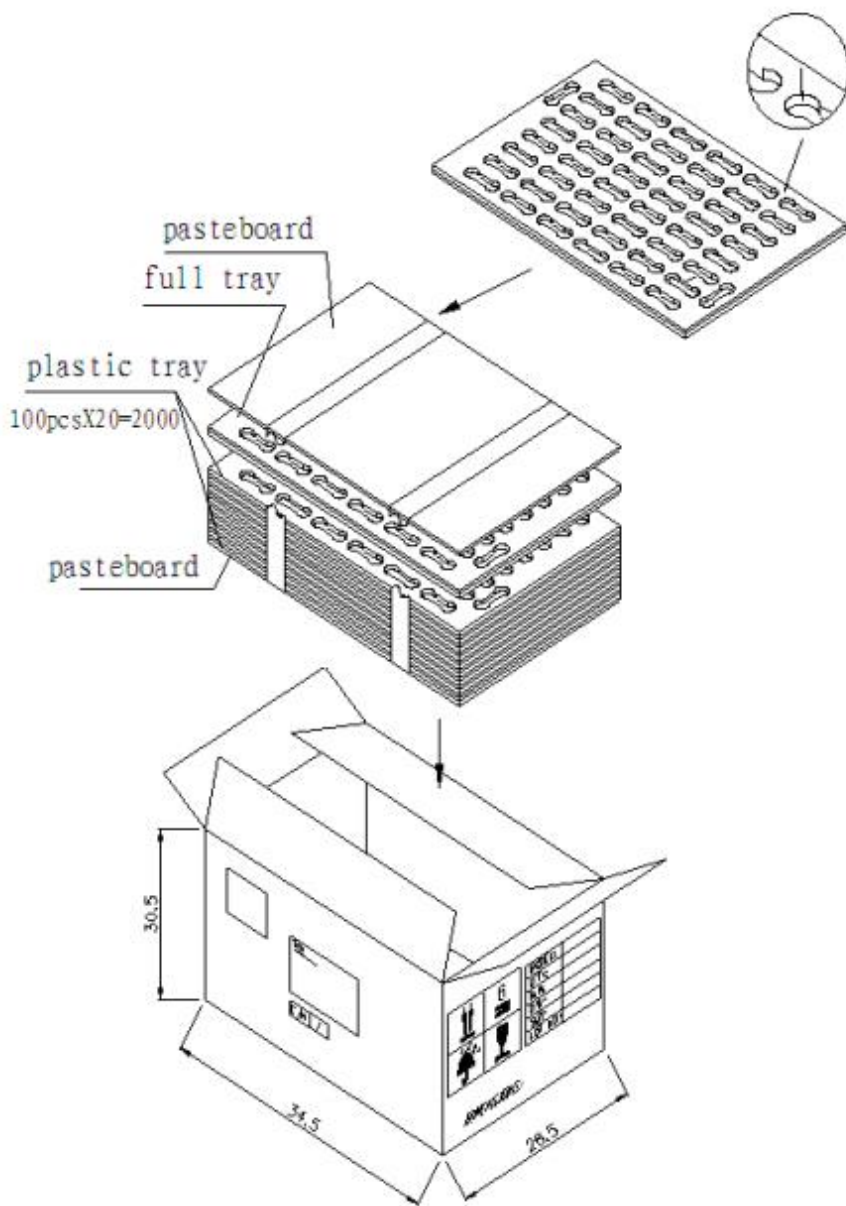
- 1.Immediately after reliability test,the samples shall be stored under climatic conditions such as normally exist in ordinary rooms or laboratories.Unless otherwise noted,the recovery period shall be 4hrs at least before performance testing.
2. After reliability test ,all samples must be meet the requirements specified
- 3.Sensitivity difference at 2~5KHz shall be within ±3dB from initial value after test.

| | | | | | | | |
|------------------------|------|----------|------|-------------------------------------|----------|---------------------------|---------------|
| | | | | Date: | 14/02/28 | BMS1018-11C-08H05RW025 LF | |
| A | B | 14/02/28 | 任江凤 | Drawn by: | 任江凤 | | |
| | A | 06/07/18 | 朱成兴 | Checked by: | 王 凯 | Speaker | |
| Rev. | Date | Drawn | Note | Approved by: | 汪珍珍 | | |
| BESTAR HOLDING CO.,LTD | | | | | | DRG NO:BS/TES01.617B | Page:11 of 13 |
| | | | | www.bestargroups.com wu@be-star.com | | | |

This print and information there in are proprietary to Bestar Holding Co., Ltd. and shall not be used in whole or in part without its written content

BMS1018-11C-08H05RW025 LF

7. Packing



Remark:
 100 pcs per tray
 10 trays for unit, 2 units per carton
 Total 2000pcs per carton
 Size: 64.5*26.5*30.5(cm)

This print and information there in are proprietary to Bestar Holding Co., Ltd. and shall not be used in whole or in part without its written content

| | | | | | | | |
|-------------------------------------|------|----------|------|--------------|----------|---------------------------|---------------|
| | | | | Date: | 14/02/28 | BMS1018-11C-08H05RW025 LF | |
| A | B | 14/02/28 | 任江凤 | Drawn by: | 任江凤 | | |
| | A | 06/07/18 | 朱成兴 | Checked by: | 王凯 | Speaker | |
| Rev. | Date | Drawn | Note | Approved by: | 汪珍珍 | | |
| BESTAR HOLDING CO.,LTD | | | | | | DRG NO:BS/TES01.617B | Page:12 of 13 |
| www.bestargroups.com wu@be-star.com | | | | | | | |

