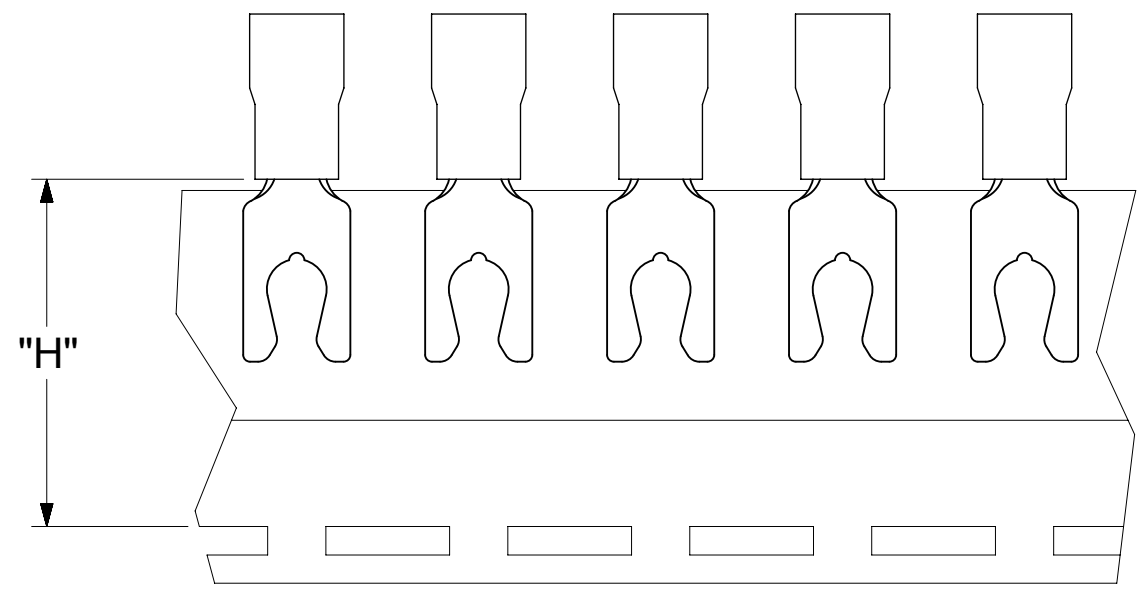
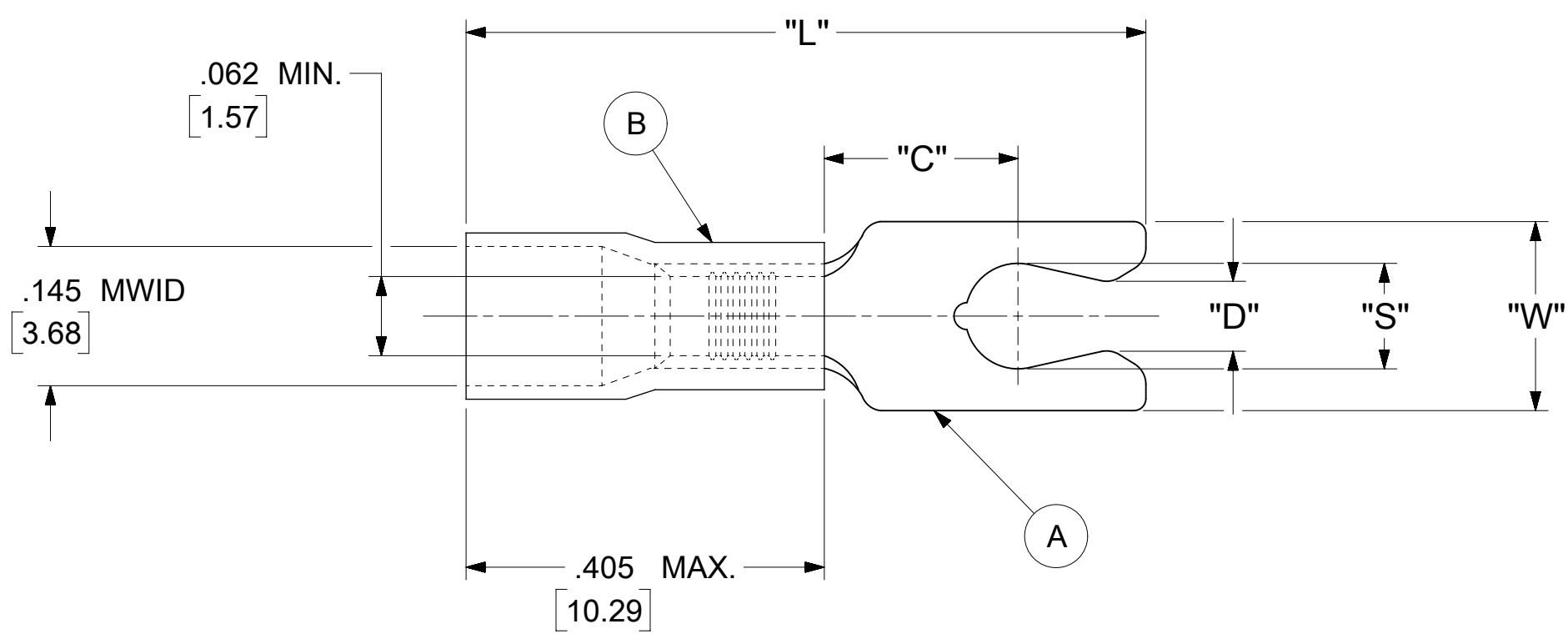


LOOSE PIECE		TAPE MOUNTED		SPECIFICATIONS						
MATERIAL NUMBER	ENGINEERING NUMBER	MATERIAL NUMBER	ENGINEERING NUMBER	STUD SIZE	"S" ±.005 [0.13]	"W" ±.010 [0.25]	"C" MIN.	"L" MAX.	"D" ±.005 [0.13]	"H"
190990007	AA-2704-05X	190990008	AA-2704-05XT	5	.127 [3.23]	.250 [6.35]	.230 [5.82]	.810 [20.57]	.105 [2.67]	.980 [24.89]
190990009	AA-2704-06X	190990010	AA-2704-06XT	6	.146 [3.71]	.250 [6.35]	.230 [5.82]	.810 [20.57]	.114 [2.90]	.980 [24.89]



NOTES:

1. MATERIAL:

(A). TERMINAL: COPPER (STOCK THICKNESS $.028 \begin{smallmatrix} +.001 \\ -.000 \end{smallmatrix}$ [0.71])

PLATING: ELECTRO-TIN (.0003 MIN.)

(B). INSULATION: MOLDED PVC (RED)

2. MWID: MAXIMUM WIRE INSULATION DIAMETER

3. WIRE SIZE: 22 -18 AWG

0.25 -1.5 MM²

4. "UL" LISTING #E32244

"CSA" LISTING #18689

5. ALL DIMENSIONS IN INCHES/[MM].

6. PARTS ARE ROHS COMPLIANT.

7. DIMS. SHOWN ARE FOR REFERENCE ONLY.

SYMBOLS	THIS DRAWING CONTAINS INFORMATION THAT IS PROPRIETARY TO MOLEX ELECTRONIC TECHNOLOGIES, LLC AND SHOULD NOT BE USED WITHOUT WRITTEN PERMISSION										
	DIMENSION UNITS	SCALE		CURRENT REV DESC: MIGRATION TO ECTR/NX							
▽ = 0	INCH/MM	NTS		EC NO: 620958 DRWN: ABENJAMINLW 2019/07/16 CHK'D: GROJAS01 2019/07/19 APPR: JMACNEIL 2019/08/05							
▽ = 0	GENERAL TOLERANCES (UNLESS SPECIFIED)									INITIAL REVISION: DRWN: JJ 1984/11/05 APPR: JMACNEIL 2019/08/05	
▽ = 0		MM	INCH	DOCUMENT NUMBER: 190990007 DOC TYPE: PSD DOC PART: 000 REVISION: A							
▽ = 0	4 PLACES	±	---							±	---
▽ = 0	3 PLACES	±	---	±	.005	THIRD ANGLE PROJECTION DRAWING: C-SIZE SERIES: 19099					
▽ = 0	2 PLACES	±	0.13	±	.01						
▽ = 0	1 PLACE	±	0.25	±	---	ANGULAR TOL ± 0.5°					
▽ = 0	0 PLACES	±	---	±	---						
▽ = 0						THIRD ANGLE PROJECTION DRAWING: C-SIZE SERIES: 19099					
▽ = 0											
▽ = 0						THIRD ANGLE PROJECTION DRAWING: C-SIZE SERIES: 19099					

DOCUMENT STATUS	P1	RELEASE DATE	2019/08/05	20:30:05
-----------------	----	--------------	------------	----------